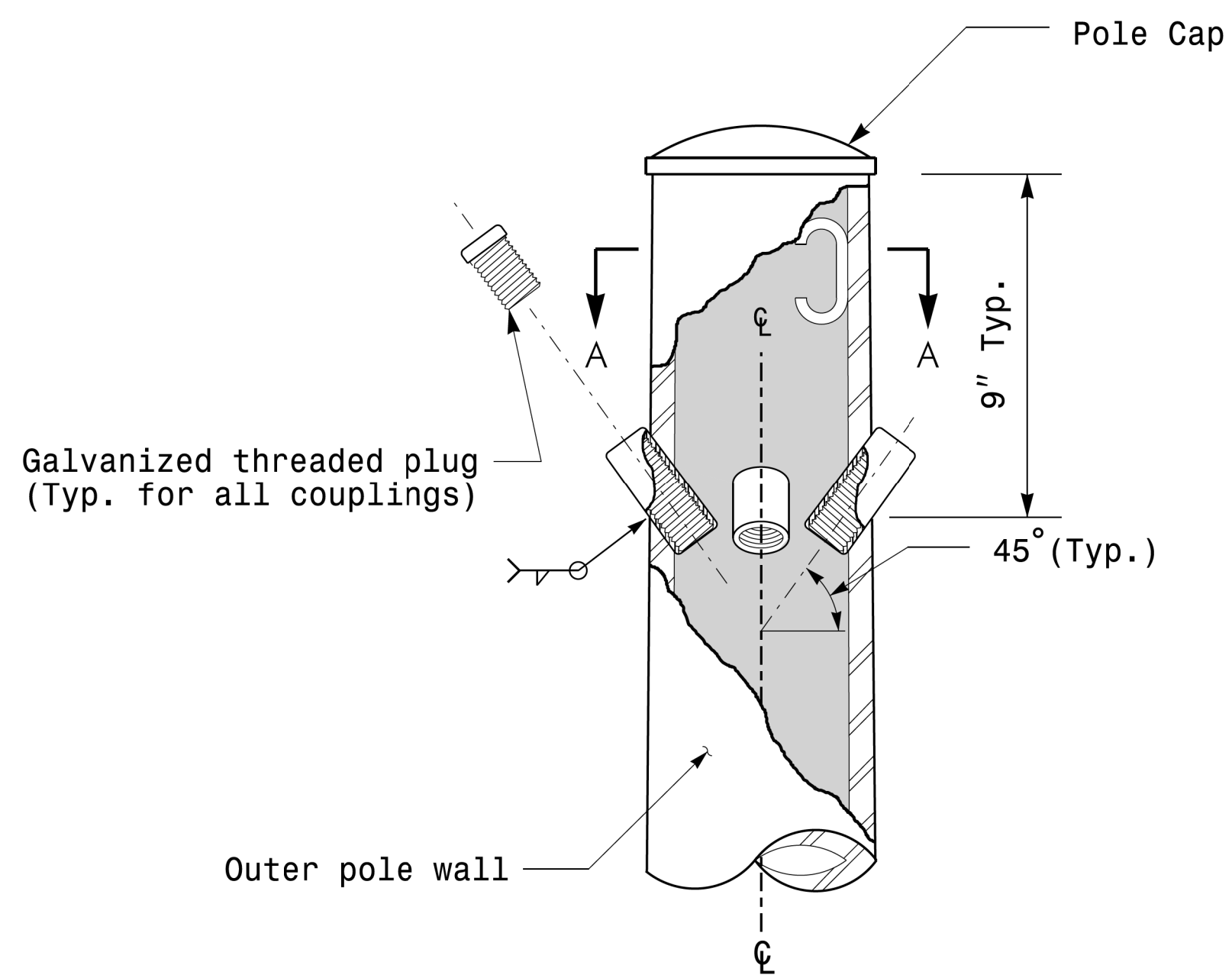
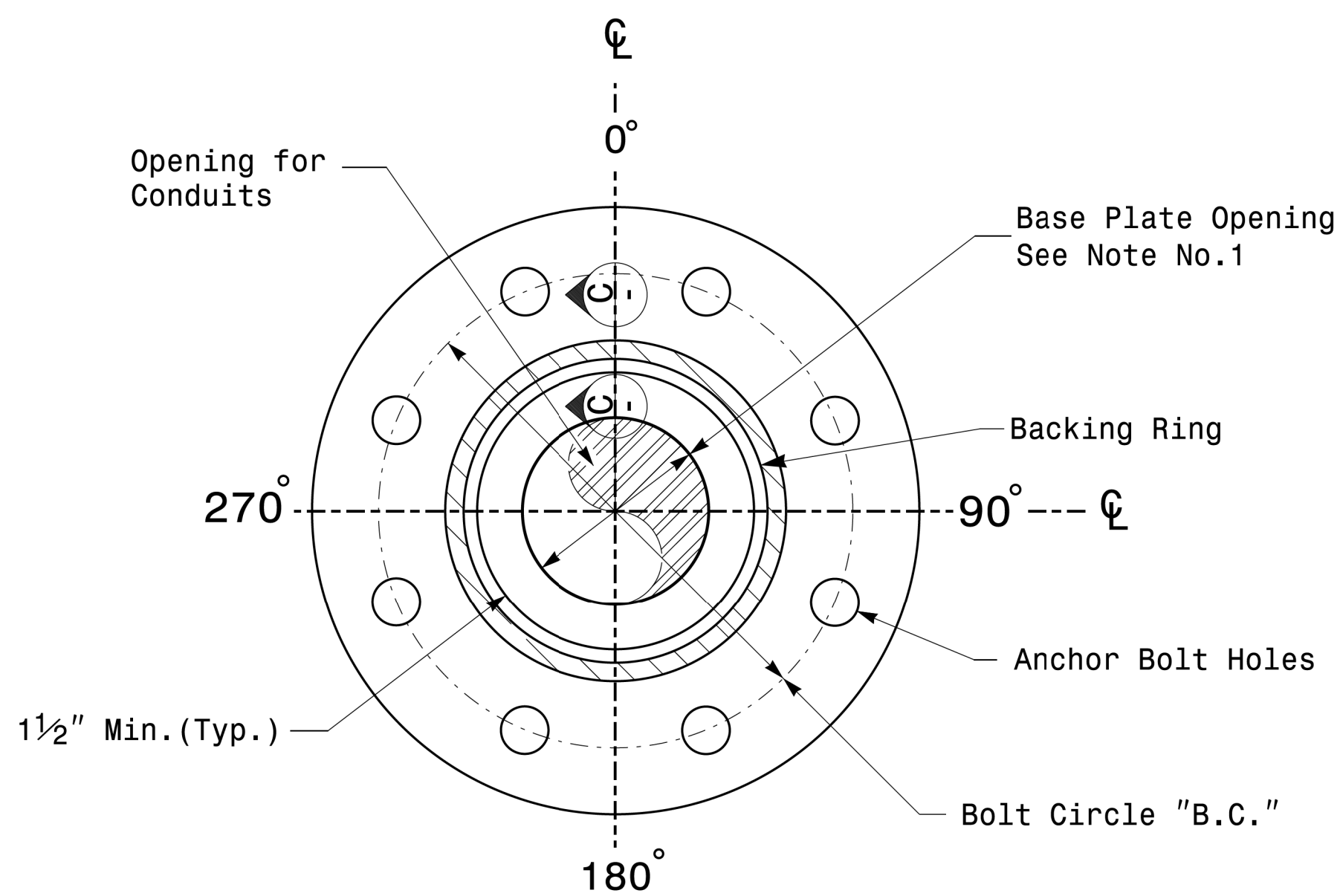


Note:  
1. Opening in pole base plate shall be equal to pole base inside diameter minus  $3\frac{1}{2}$ " but shall not be less than  $8\frac{1}{2}$ ".

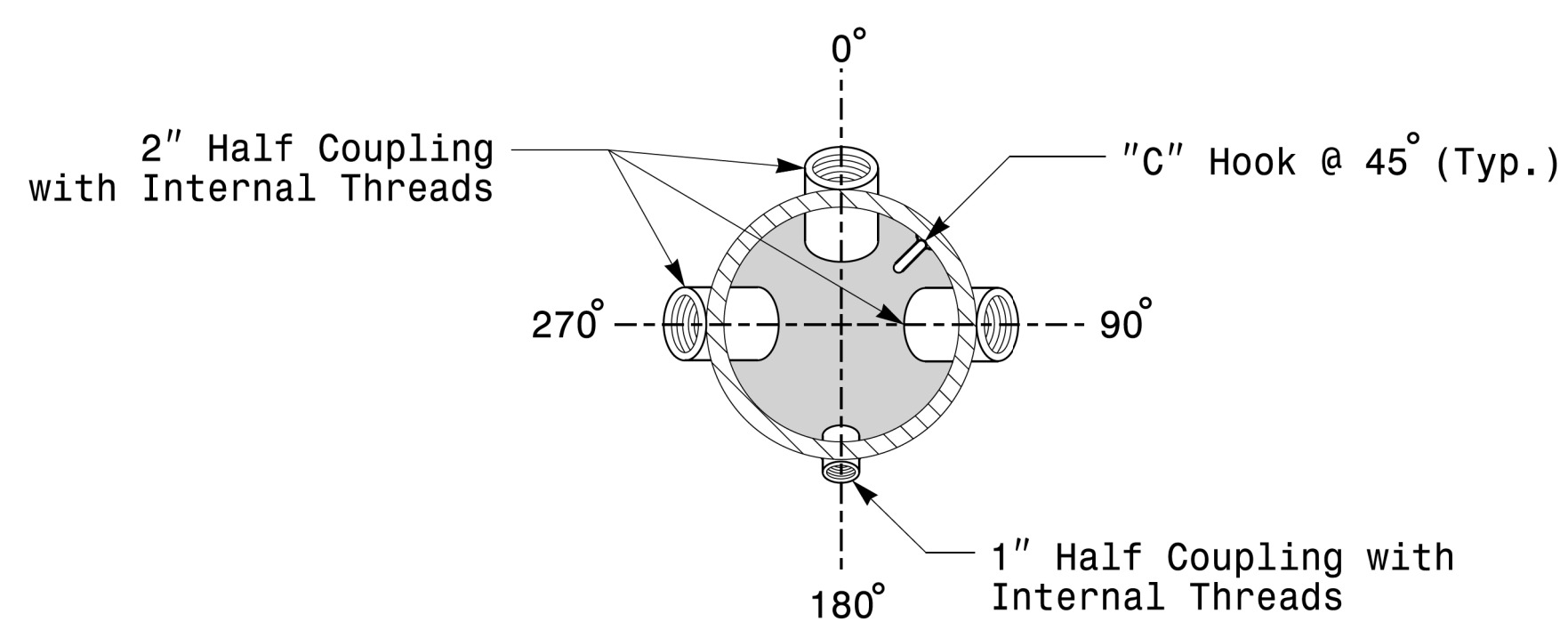


Cable Entrances at Top of Pole

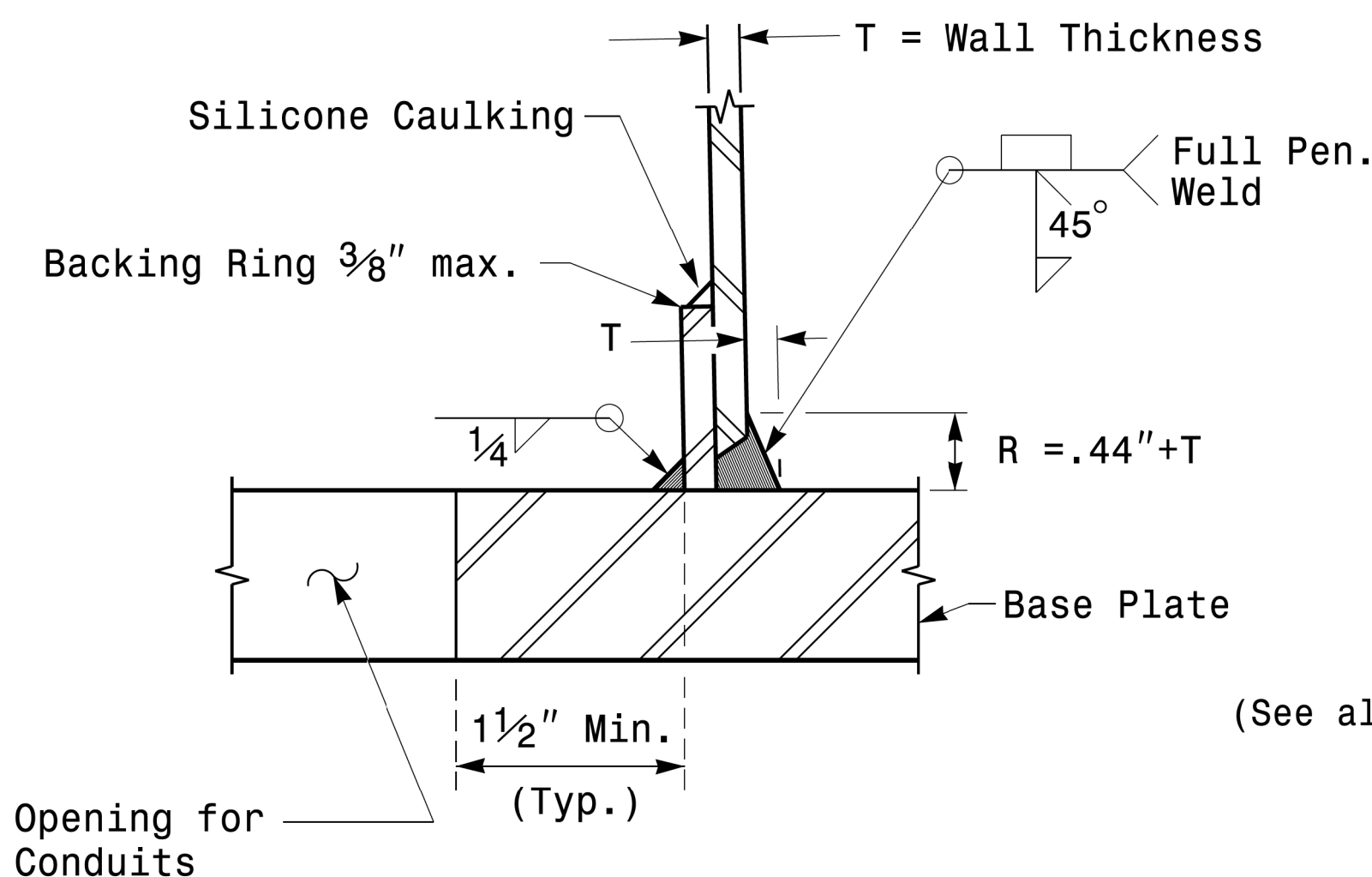


Section B-B  
Pole Base Plate Details  
(8 and 12 Bolt Pattern)

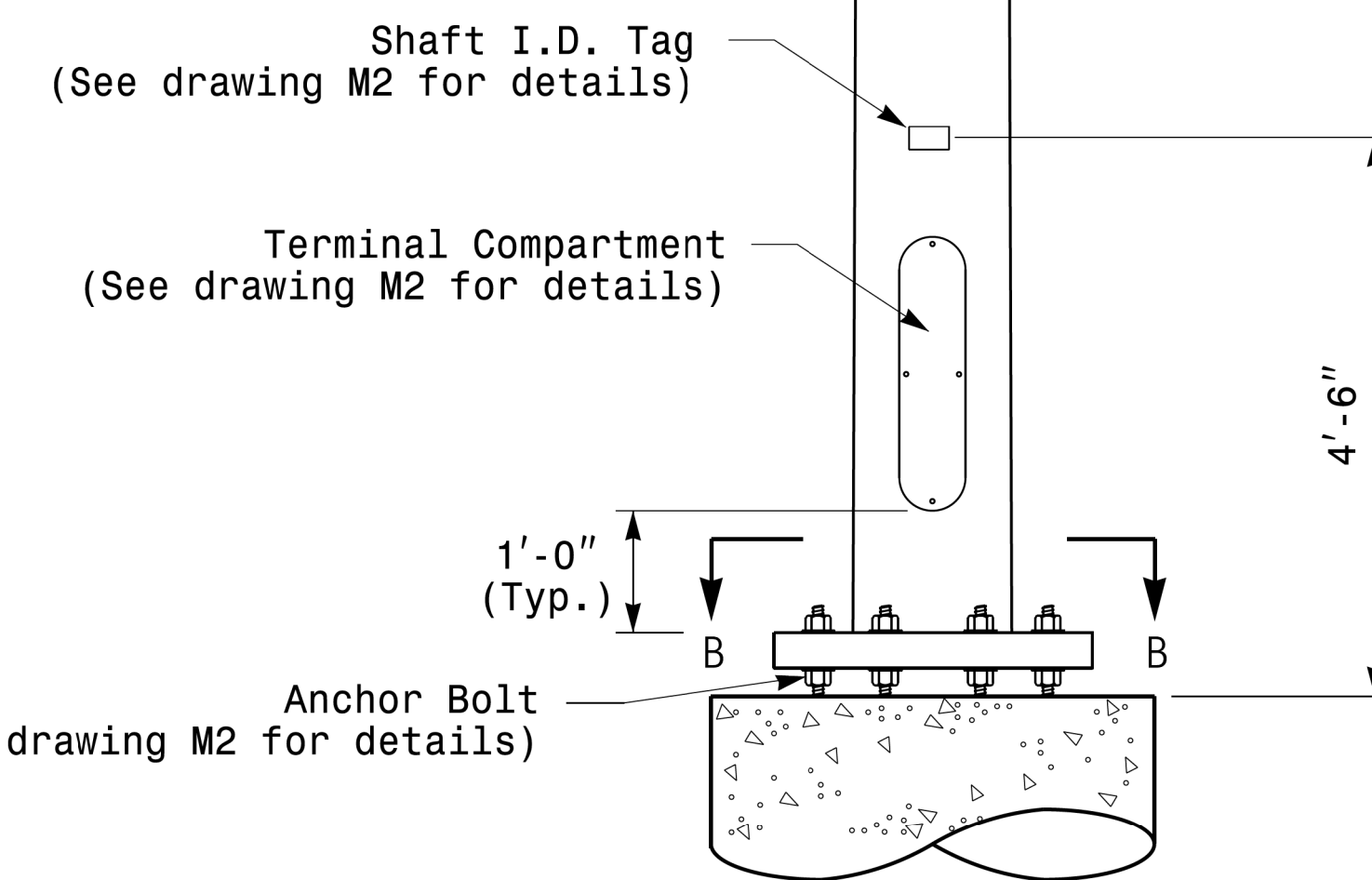
2 Cable Clamps designed for variable attachment heights from 1'-6" to 5'-0" below the top of the pole.



Section A-A  
Radial Orientation for Factory Installed  
Accessories at Top of Pole



Section C-C  
(Pole Attachment to Base Plate)  
Full-Penetration  
Groove Weld Detail



Monotube Strain Pole

Fabrication Details - Strain Poles

Prepared In the Offices of:  
  
 750 N. Greenfield Hwy, Garner, NC 27529

SCALE: NONE

Typical Fabrication Details For Strain Poles			
PLAN DATE: OCTOBER 2017	DESIGNED BY: K.C. DURIGON		
PREPARED BY: N. BITTING	REVIEWED BY: D.C. SARKAR		
REVISIONS		INIT.	DATE

SEAL  
  
 Documented by: Dibendu C. Sarkar  
 DATE: 10/11/2017