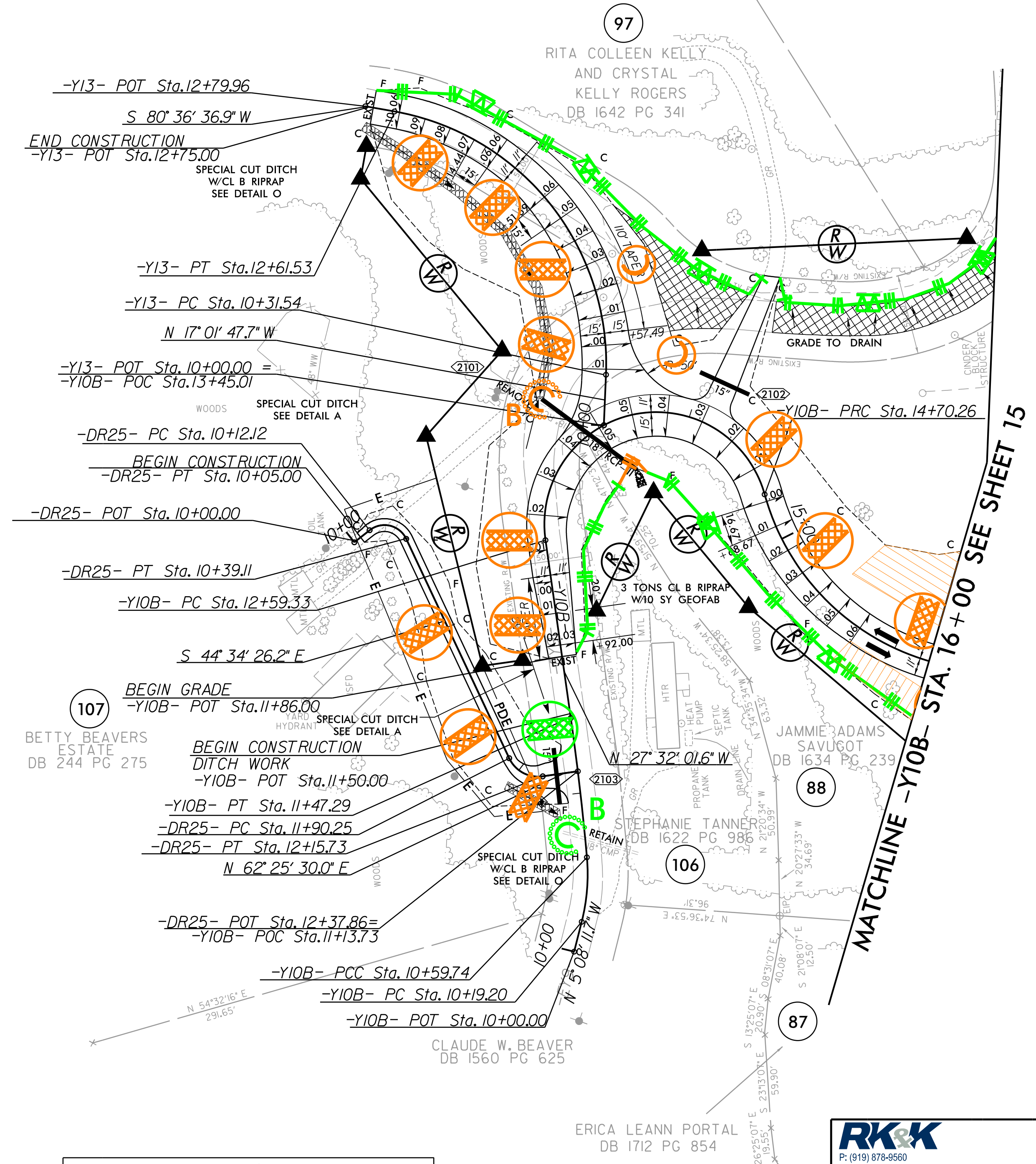


8/17/99  
 R:\Projects\2023\RA\Hickory\Drawings\Control\PSH\Erosion\_Control\RB5861\_EC\_pah39.dgn  
 8/16/2023  
 R:\Projects\2023\RA\Hickory\Drawings\Control\PSH\Erosion\_Control\RB5861\_EC\_pah39.dgn

-Y10B-				-Y13-	-DR25-	
PI Sta 10+39.67	PI Sta 11+03.53	PI Sta 23+48.57	PI Sta 18+53.23	PI Sta 11+71.51	PI Sta 10+31.01	PI Sta 12+05.05
$\Delta = 19^{\circ} 21' 25.9" (LT)$	$\Delta = 3^{\circ} 02' 24.0" (LT)$	$\Delta = 172^{\circ} 38' 45.0" (RT)$	$\Delta = 137^{\circ} 13' 19.0" (LT)$	$\Delta = 82^{\circ} 21' 35.4" (LT)$	$\Delta = 103^{\circ} 05' 47.7" (RT)$	$\Delta = 73^{\circ} 00' 03.8" (LT)$
D = 47' 44" 47.3"	D = 3' 28' 20.9"	D = 8' 51' 04.0"	D = 38' 11' 49.9"	D = 35' 48' 35.5"	D = 381' 58' 18.7"	D = 286' 28' 44.0"
L = 40.54'	L = 87.55'	L = 210.93'	L = 359.25'	L = 229.99'	L = 26.99'	L = 25.48'
T = 20.47'	T = 43.78'	T = 1,089.23'	T = 382.97'	T = 139.97'	T = 18.89'	T = 14.80'
R = 120.00'	R = 1,650.00'	R = 70.00'	R = 150.00'	R = 160.00'	R = 15.00'	R = 20.00'
		SE = 0.06	SE = 0.06	SE = 0.06		
		RO = 120'	RO = 100'	RO = 90'		
		DS = 15 MPH	DS = 25 MPH	DS = 20 MPH		

PROJECT REFERENCE NO. R-5861	SHEET NO. EC-39/CONST.21
RW SHEET NO.	
ROADWAY DESIGN ENGINEER	HYDRAULICS ENGINEER



NOTES: ALL DRIVES ARE 16' WIDE WITH 10' RADII UNLESS OTHERWISE NOTED.

FOR -Y10B- PROFILE SEE SHT. 32  
 FOR -Y13- PROFILE SEE SHT. 34  
 FOR -DR25- PROFILE SEE SHT. 37  
 FOR DITCH DETAILS SEE SHT. 2D-1 & 2D-2

P: (919) 878-9560  
 8601 Six Forks Road, Forum 1, Suite 700  
 Raleigh, North Carolina 27615-3960  
 NC License No. F-0112  
 Engineers | Construction Managers | Planners | Scientists  
 www.rkk.com  
 Responsive People | Creative Solutions