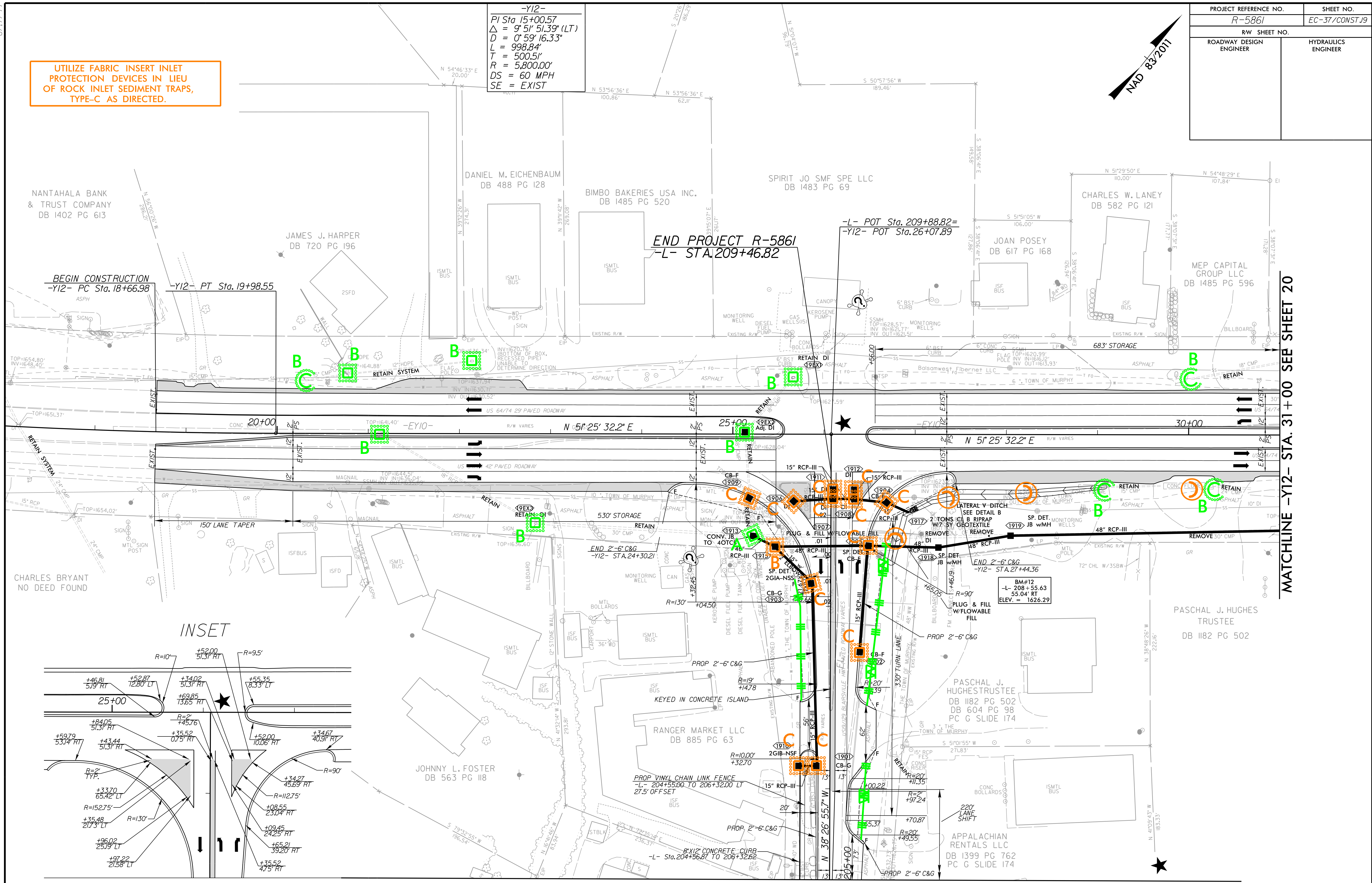
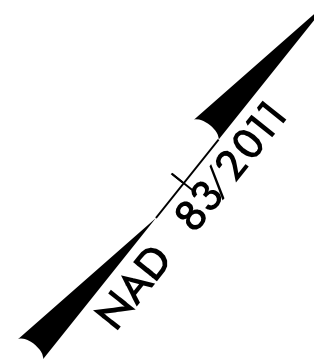


PROJECT REFERENCE NO.	SHEET NO.
R-5861	EC-37/CONST.19
RW SHEET NO.	
ROADWAY DESIGN ENGINEER	HYDRAULICS ENGINEER

UTILIZE FABRIC INSERT INLET PROTECTION DEVICES IN LIEU OF ROCK INLET SEDIMENT TRAPS, TYPE-C AS DIRECTED.

-Y12-
 PI Sta 15+00.57
 $\Delta = 9' 51" 51.39" (LT)$
 $D = 0' 59" 16.33"$
 $L = 998.84'$
 $T = 500.51'$
 $R = 5,800.00'$
 $DS = 60 MPH$
 $SE = EXIST$



BEGIN CONSTRUCTION
 -Y12- PC Sta. 18+66.98
 -Y12- PT Sta. 19+98.55

END PROJECT R-5861
 -L- STA. 209+46.82

-L- POT Sta. 209+88.82=
 -Y12- POT Sta. 26+07.89

MATCHLINE -Y12- STA. 31+00 SEE SHEET 20

MATCHLINE -L- STA. 205+00 SEE SHEET 18

