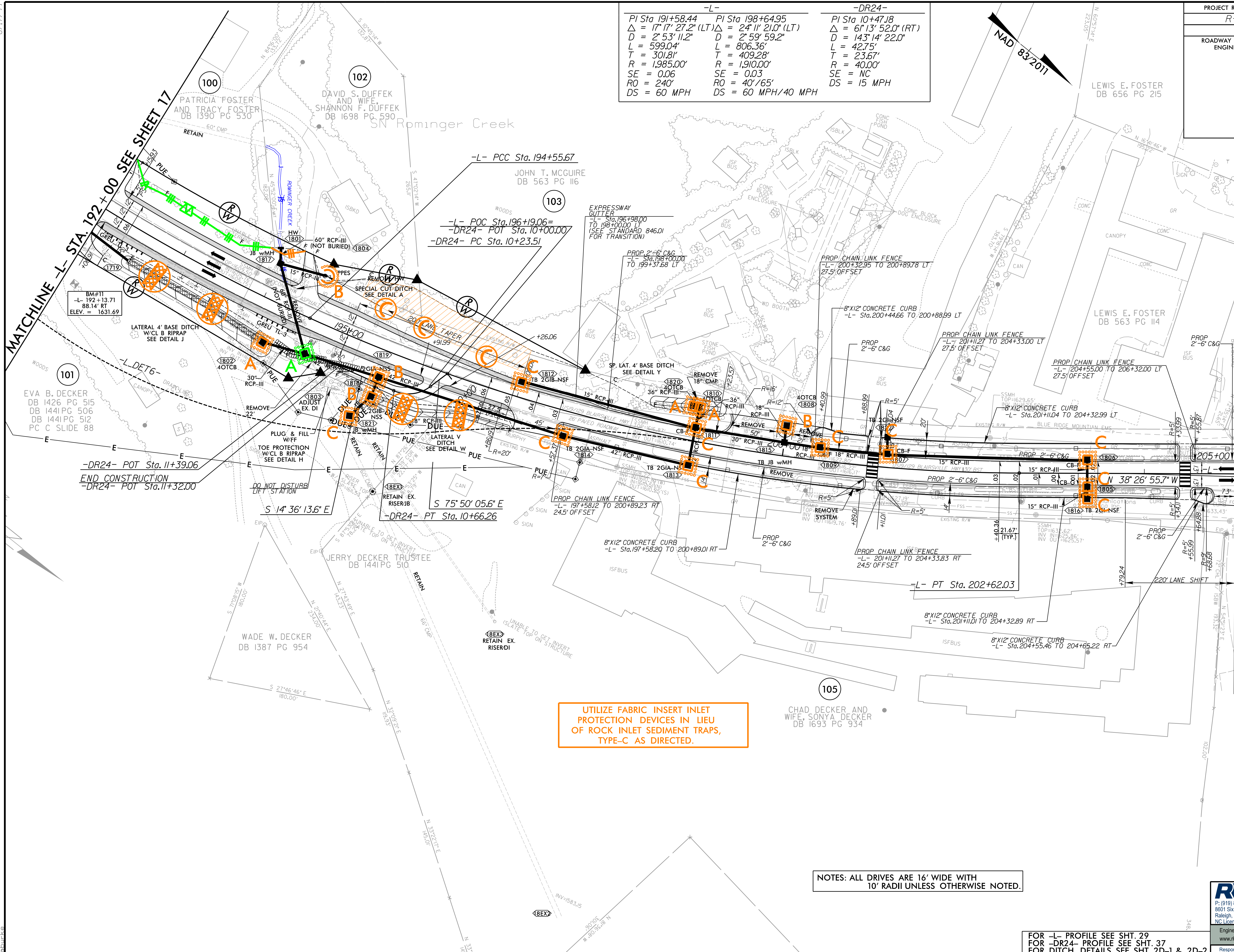


PROJECT REFERENCE NO.	SHEET NO.
R-5861	EC-36/CONST.18
RW SHEET NO.	
ROADWAY DESIGN ENGINEER	HYDRAULICS ENGINEER

-L-	-DR24-
PI Sta 191+58.44	PI Sta 10+47.18
$\Delta = 17' 17.272''$ (LT)	$\Delta = 6' 13' 52.0''$ (RT)
$D = 2' 53' 11.2''$	$D = 143' 14' 22.0''$
$L = 599.04'$	$L = 42.75'$
$T = 301.81'$	$T = 23.67'$
$R = 1,985.00'$	$R = 40.00'$
$SE = 0.06$	$SE = NC$
$RO = 240'$	$DS = 15$ MPH
$DS = 60$ MPH	



UTILIZE FABRIC INSERT INLET PROTECTION DEVICES IN LIEU OF ROCK INLET SEDIMENT TRAPS, TYPE-C AS DIRECTED.

NOTES: ALL DRIVES ARE 16' WIDE WITH 10' RADII UNLESS OTHERWISE NOTED.

FOR -L- PROFILE SEE SHT. 29
 FOR -DR24- PROFILE SEE SHT. 37
 FOR DITCH DETAILS SEE SHT. 2D-1 & 2D-2

RK&K
 P: (919) 878-9560
 8601 Six Forks Road, Forum 1, Suite 700
 Raleigh, North Carolina 27615-3960
 NC License No. F-0112

Engineers | Construction Managers | Planners | Scientists
 www.rk&k.com
 Responsive People | Creative Solutions

8/17/2023
 R:\Projects\185861\EC-36\Const\18\Control\185861_EC_pah36.dgn
 8/17/2023