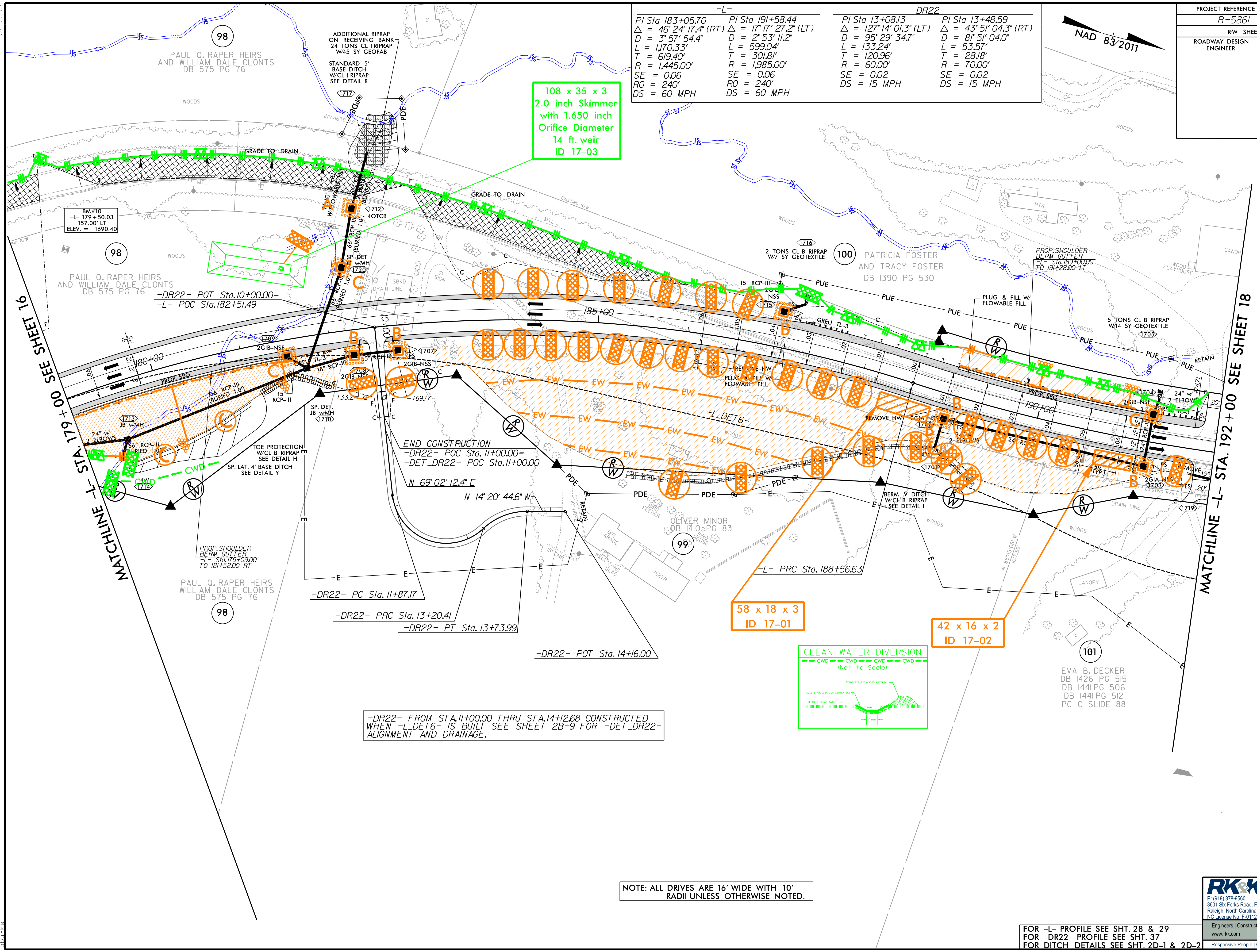
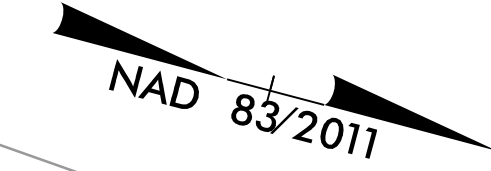


PROJECT REFERENCE NO.	SHEET NO.
R-5861	EC-35/CONST.17
RW SHEET NO.	
ROADWAY DESIGN ENGINEER	HYDRAULICS ENGINEER

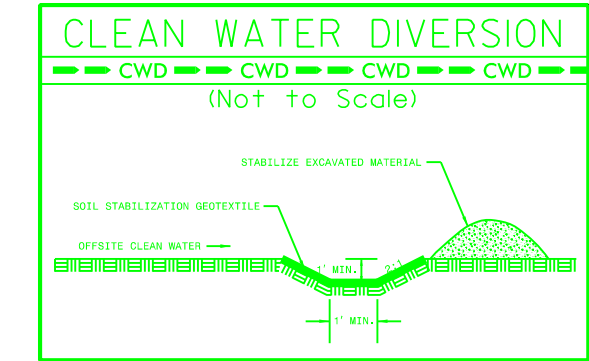
-L-		-DR22-	
PI Sta 183+05.70	PI Sta 191+58.44	PI Sta 13+08.13	PI Sta 13+48.59
$\Delta = 46^{\circ}24'17.4"$ (RT)	$\Delta = 17^{\circ}17'27.2"$ (LT)	$\Delta = 127^{\circ}14'01.3"$ (LT)	$\Delta = 43^{\circ}51'04.3"$ (RT)
D = 3'57'54.4"	D = 2'53'11.2"	D = 95'29'34.7"	D = 81'51'04.0"
L = 1,170.33'	L = 599.04'	L = 133.24'	L = 53.57'
T = 619.40'	T = 301.81'	T = 120.96'	T = 28.18'
R = 1,445.00'	R = 1,985.00'	R = 60.00'	R = 70.00'
SE = 0.06	SE = 0.06	SE = 0.02	SE = 0.02
RO = 240'	RO = 240'	DS = 15 MPH	DS = 15 MPH
DS = 60 MPH	DS = 60 MPH		



108 x 35 x 3  
2.0 inch Skimmer  
with 1.650 inch  
Orifice Diameter  
14 ft. weir  
ID 17-03

58 x 18 x 3  
ID 17-01

42 x 16 x 2  
ID 17-02



-DR22- FROM STA.11+00.00 THRU STA.14+12.68 CONSTRUCTED WHEN -L-DET6- IS BUILT SEE SHEET 2B-9 FOR -DET\_DR22- ALIGNMENT AND DRAINAGE.

NOTE: ALL DRIVES ARE 16' WIDE WITH 10' RADII UNLESS OTHERWISE NOTED.

FOR -L- PROFILE SEE SHT. 28 & 29  
FOR -DR22- PROFILE SEE SHT. 37  
FOR DITCH DETAILS SEE SHT. 2D-1 & 2D-2

**RK&K**  
P: (919) 878-9560  
8601 Six Forks Road, Forum 1, Suite 700  
Raleigh, North Carolina 27615-3960  
NC License No. F-0112  
Engineers | Construction Managers | Planners | Scientists  
www.rkk.com  
Responsive People | Creative Solutions

8/17/2023 R:\p\paul\lincs\CADD\PSH\Erosion\_Control\R5861\_EC\_pah35.dgn