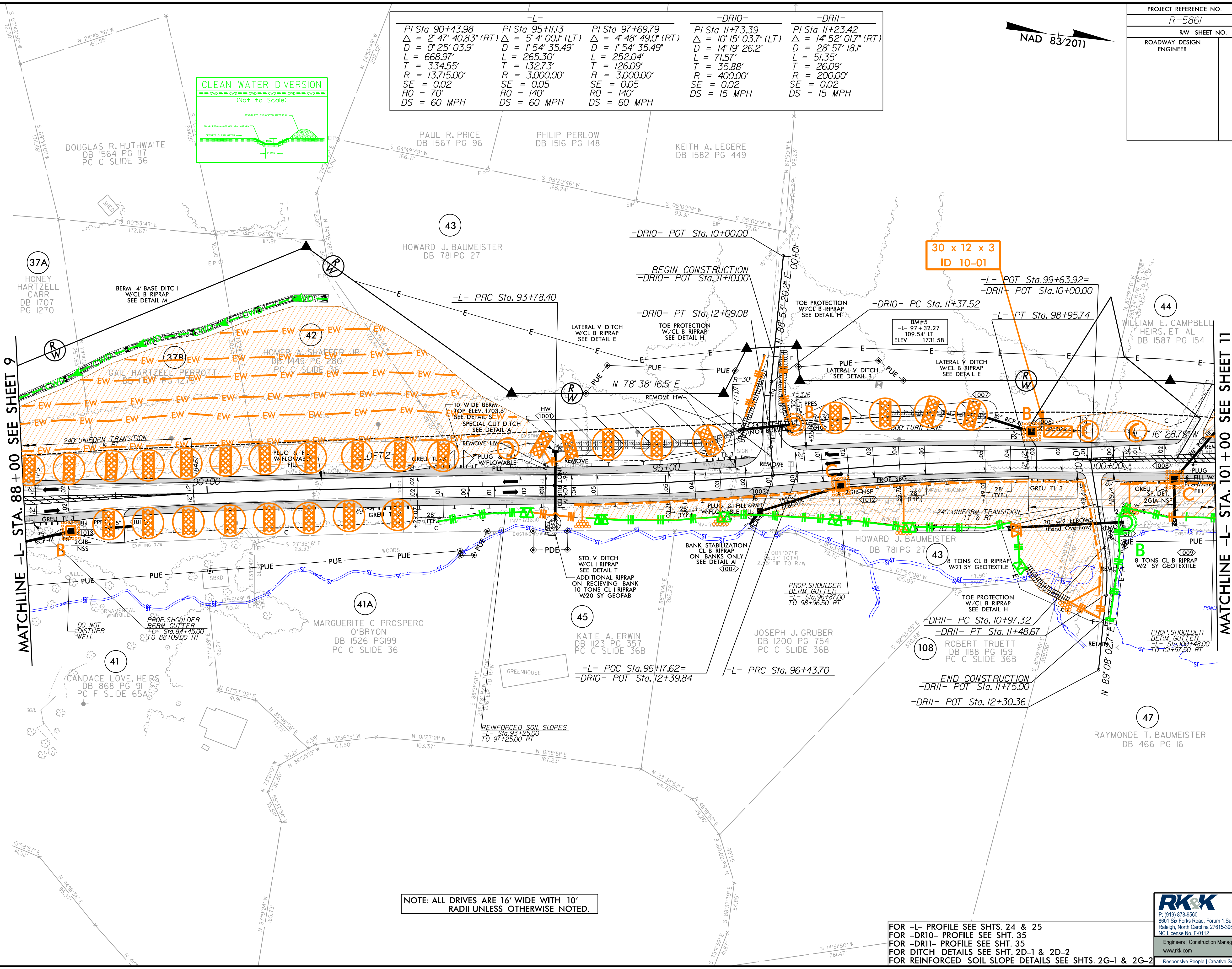
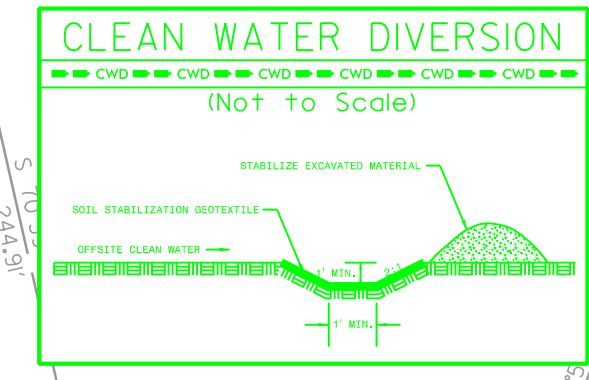


PROJECT REFERENCE NO.	SHEET NO.
R-5861	EC-28/CONST.10
RW SHEET NO.	
ROADWAY DESIGN ENGINEER	HYDRAULICS ENGINEER

-L-			-DRIO-		-DRII-	
PI Sta 90+43.98	PI Sta 95+11.13	PI Sta 97+69.79	PI Sta 11+73.39	PI Sta 11+23.42		
$\Delta = 2^{\circ} 47' 40.83''$ (RT)	$\Delta = 5^{\circ} 4' 00.1''$ (LT)	$\Delta = 4^{\circ} 48' 49.0''$ (RT)	$\Delta = 10^{\circ} 15' 03.7''$ (LT)	$\Delta = 14^{\circ} 52' 01.7''$ (RT)		
D = 0' 25' 03.9"	D = 1' 54' 35.49"	D = 1' 54' 35.49"	D = 14' 19' 26.2"	D = 28' 57' 18.1"		
L = 668.97'	L = 265.30'	L = 252.04'	L = 71.57'	L = 51.35'		
T = 334.55'	T = 132.73'	T = 126.09'	T = 35.88'	T = 26.09'		
R = 13,715.00'	R = 3,000.00'	R = 3,000.00'	R = 400.00'	R = 200.00'		
SE = 0.02	SE = 0.05	SE = 0.05	SE = 0.02	SE = 0.02		
RO = 70'	RO = 140'	RO = 140'	DS = 15 MPH	DS = 15 MPH		
DS = 60 MPH	DS = 60 MPH	DS = 60 MPH				

NAD 83/2011



MATCHLINE -L- STA. 88 + 00 SEE SHEET 9

MATCHLINE -L- STA. 101 + 00 SEE SHEET 11

NOTE: ALL DRIVES ARE 16' WIDE WITH 10' RADII UNLESS OTHERWISE NOTED.

FOR -L- PROFILE SEE SHTS. 24 & 25
 FOR -DRIO- PROFILE SEE SHT. 35
 FOR -DRII- PROFILE SEE SHT. 35
 FOR DITCH DETAILS SEE SHT. 2D-1 & 2D-2
 FOR REINFORCED SOIL SLOPE DETAILS SEE SHTS. 2G-1 & 2G-2

RK&K
 P: (919) 878-9560
 8601 Six Forks Road, Forum 1, Suite 700
 Raleigh, North Carolina 27615-3960
 NC License No. F-0112
 Engineers | Construction Managers | Planners | Scientists
 www.rk&k.com
 Responsive People | Creative Solutions

8/17/2023 R:\Projects\1925\1925-01\1925-01-01\1925-01-01.dgn