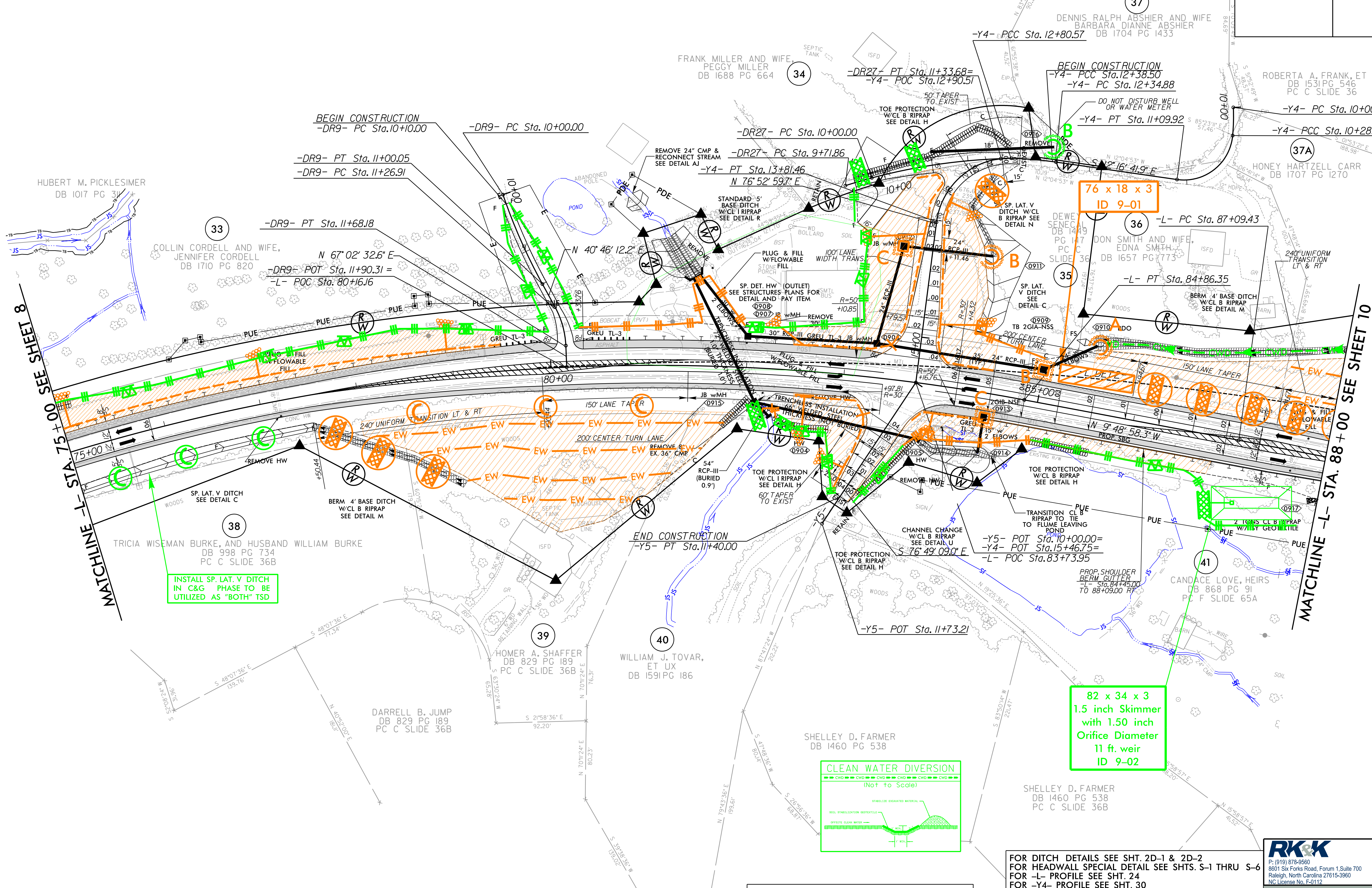
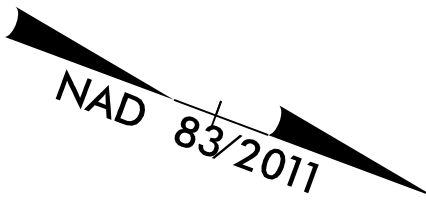


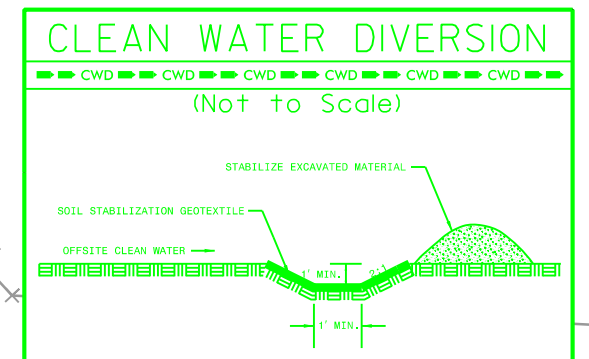
-DR9-		-L-		-Y4-		-DR27-	
PI Sta 10+50.15	PI Sta 11+47.91	PI Sta 75+17.07	PI Sta 90+43.98	PI Sta 10+14.44	PI Sta 10+81.45	PI Sta 12+57.81	PI Sta 13+48.53
$\Delta = 9^{\circ} 53' 01.0"$ (LT)	$\Delta = 26^{\circ} 16' 20.4"$ (RT)	$\Delta = 60^{\circ} 30' 48.9"$ (RT)	$\Delta = 2^{\circ} 47' 40.83"$ (RT)	$\Delta = 7^{\circ} 51' 52.2"$ (RT)	$\Delta = 92^{\circ} 55' 38.0"$ (RT)	$\Delta = 6^{\circ} 28' 50.8"$ (LT)	$\Delta = 84^{\circ} 21' 27.6"$ (LT)
$D = 9^{\circ} 52' 42.9"$	$D = 63^{\circ} 39' 43.1"$	$D = 2^{\circ} 47' 41.7"$	$D = 0^{\circ} 25' 03.9"$	$D = 27^{\circ} 17' 01.3"$	$D = 114^{\circ} 35' 29.6"$	$D = 14^{\circ} 10' 59.9"$	$D = 83^{\circ} 37' 14.3"$
$L = 100.05'$	$L = 41.27'$	$L = 2165.13'$	$L = 668.97'$	$L = 28.82'$	$L = 28.82'$	$L = 45.69'$	$L = 100.88'$
$T = 50.15'$	$T = 21.00'$	$T = 1195.85'$	$T = 334.55'$	$T = 14.44'$	$T = 52.62'$	$T = 22.93'$	$T = 67.96'$
$R = 580.00'$	$R = 90.00'$	$R = 2,050.00'$	$R = 13,715.00'$	$R = 210.00'$	$R = 50.00'$	$R = 405.00'$	$R = 750.00'$
$SE = 0.02$	$SE = 0.02$	$SE = 0.06$	$SE = 0.02$	$SE = 0.02$	$SE = 0.02$	$SE = 0.02$	$SE = 0.02$
$DS = 15$ MPH	$DS = 15$ MPH	$DS = 60$ MPH	$DS = 60$ MPH	$DS = 15$ MPH	$DS = 15$ MPH	$DS = 15$ MPH	$DS = 15$ MPH

PROJECT REFERENCE NO. R-5861	SHEET NO. EC-27/CONST.9
RW SHEET NO.	
ROADWAY DESIGN ENGINEER	HYDRAULICS ENGINEER



INSTALL SP. LAT. V DITCH IN C&G PHASE TO BE UTILIZED AS "BOTH" TSD

82 x 34 x 3  
1.5 inch Skimmer  
with 1.50 inch  
Orifice Diameter  
11 ft. weir  
ID 9-02



NOTES: ALL DRIVES ARE 16' WIDE WITH 10' RADII UNLESS OTHERWISE NOTED.

FOR DITCH DETAILS SEE SHT. 2D-1 & 2D-2  
FOR HEADWALL SPECIAL DETAIL SEE SHTS. S-1 THRU S-6  
FOR -L- PROFILE SEE SHT. 24  
FOR -Y4- PROFILE SEE SHT. 30  
FOR -Y5- PROFILE SEE SHT. 31  
FOR -DR9- PROFILE SEE SHT. 35  
FOR -DR27- PROFILE SEE SHT. 43

**RK&K**  
P: (919) 878-9560  
8601 Six Forks Road, Forum 1, Suite 700  
Raleigh, North Carolina 27615-3960  
NC License No. F-0112  
Engineers | Construction Managers | Planners | Scientists  
www.rk&k.com  
Responsive People | Creative Solutions

8/17/2023 R:\Projects\2023\EC-27\Const.9\EC-27-Const.9.dwg Control\PSH\Erosion\_Control\R5861\_EC\_psh27.dwg