

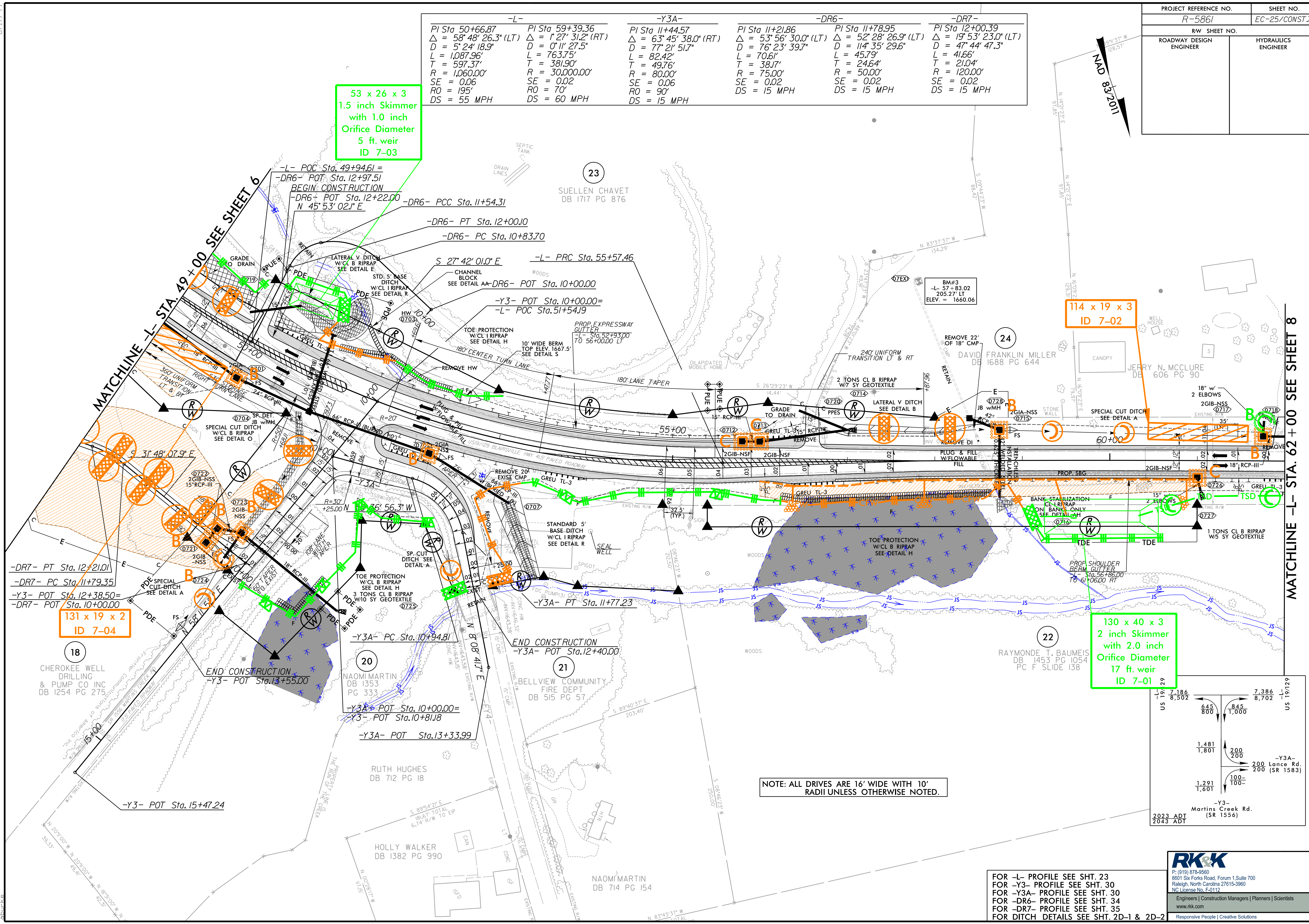
PROJECT REFERENCE NO.	SHEET NO.
R-5861	EC-25/CONST.7
RW SHEET NO.	
ROADWAY DESIGN ENGINEER	HYDRAULICS ENGINEER

-L-		-Y3A-	-DR6-	-DR7-
PI Sta 50+66.87	PI Sta 59+39.36	PI Sta 11+44.57	PI Sta 11+21.86	PI Sta 12+00.39
$\Delta = 58^{\circ} 48' 26.3" (LT)$	$\Delta = 1^{\circ} 27' 31.2" (RT)$	$\Delta = 63^{\circ} 45' 38.0" (RT)$	$\Delta = 53^{\circ} 56' 30.0" (LT)$	$\Delta = 19^{\circ} 53' 23.0" (LT)$
D = 5' 24' 18.9"	D = 0' 11' 27.5"	D = 77' 21' 51.7"	D = 76' 23' 39.7"	D = 47' 44' 47.3"
L = 1,087.96'	L = 763.75'	L = 82.42'	L = 70.61'	L = 41.66'
T = 597.37'	T = 381.90'	T = 49.76'	T = 24.64'	T = 21.04'
R = 1,060.00'	R = 30,000.00'	R = 80.00'	R = 75.00'	R = 120.00'
SE = 0.06	SE = 0.02	SE = 0.06	SE = 0.02	SE = 0.02
RO = 195'	RO = 70'	RO = 90'	DS = 15 MPH	DS = 15 MPH
DS = 55 MPH	DS = 60 MPH	DS = 15 MPH		

53 x 26 x 3
1.5 inch Skimmer
with 1.0 inch
Orifice Diameter
5 ft. weir
ID 7-03

114 x 19 x 3
ID 7-02

130 x 40 x 3
2 inch Skimmer
with 2.0 inch
Orifice Diameter
17 ft. weir
ID 7-01



R:\18\2023\Projects\EC-25\Const\Control\5861_EC_pah25.dgn

NOTE: ALL DRIVES ARE 16' WIDE WITH 10' RADII UNLESS OTHERWISE NOTED.

FOR -L- PROFILE SEE SHT. 23
FOR -Y3A- PROFILE SEE SHT. 30
FOR -DR6- PROFILE SEE SHT. 34
FOR -DR7- PROFILE SEE SHT. 35
FOR DITCH DETAILS SEE SHT. 2D-1 & 2D-2

RK&K
P: (919) 878-9560
8601 Six Forks Road, Forum 1, Suite 700
Raleigh, North Carolina 27615-3960
NC License No. F-0112
Engineers | Construction Managers | Planners | Scientists
www.rk&k.com
Responsive People | Creative Solutions