

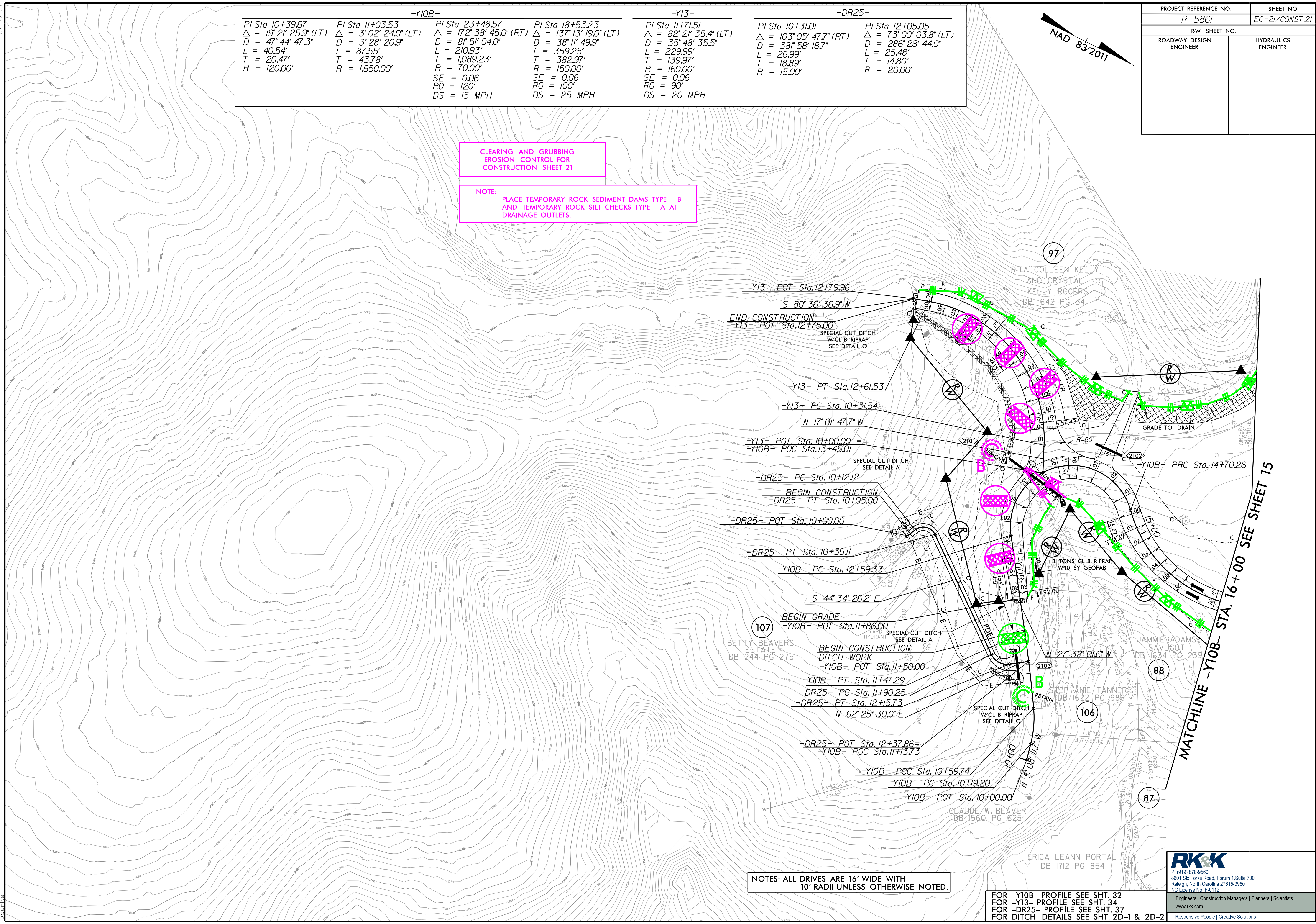
-Y10B-		-Y13-		-DR25-	
PI Sta 10+39.67	PI Sta 11+03.53	PI Sta 23+48.57	PI Sta 18+53.23	PI Sta 10+31.01	PI Sta 12+05.05
$\Delta = 19^\circ 21' 25.9''$ (LT)	$\Delta = 3^\circ 02' 24.0''$ (LT)	$\Delta = 172^\circ 38' 45.0''$ (RT)	$\Delta = 137^\circ 13' 19.0''$ (LT)	$\Delta = 82^\circ 21' 35.4''$ (LT)	$\Delta = 73^\circ 00' 03.8''$ (LT)
D = 47' 44" 47.3"	D = 3' 28" 20.9"	D = 8' 51" 04.0"	D = 38' 11" 49.9"	D = 35' 48" 35.5"	D = 286' 28" 44.0"
L = 40.54'	L = 87.55'	L = 210.93'	L = 359.25'	L = 229.99'	L = 25.48'
T = 20.47'	T = 43.78'	T = 1,089.23'	T = 382.97'	T = 139.97'	T = 14.80'
R = 120.00'	R = 1,650.00'	R = 70.00'	R = 150.00'	R = 160.00'	R = 20.00'
		SE = 0.06	SE = 0.06	SE = 0.06	
		RO = 120'	RO = 100'	RO = 90'	
		DS = 15 MPH	DS = 25 MPH	DS = 20 MPH	

PROJECT REFERENCE NO. R-5861		SHEET NO. EC-21/CONST.21	
RW SHEET NO.			
ROADWAY DESIGN ENGINEER	HYDRAULICS ENGINEER		



CLEARING AND GRUBBING  
EROSION CONTROL FOR  
CONSTRUCTION SHEET 21

NOTE:  
PLACE TEMPORARY ROCK SEDIMENT DAMS TYPE - B  
AND TEMPORARY ROCK SILT CHECKS TYPE - A AT  
DRAINAGE OUTLETS.



NOTES: ALL DRIVES ARE 16' WIDE WITH  
10' RADII UNLESS OTHERWISE NOTED.

FOR -Y10B- PROFILE SEE SHT. 32  
FOR -Y13- PROFILE SEE SHT. 34  
FOR -DR25- PROFILE SEE SHT. 37  
FOR DITCH DETAILS SEE SHT. 2D-1 & 2D-2

**RK&K**  
P: (919) 878-9560  
8601 Six Forks Road, Forum 1, Suite 700  
Raleigh, North Carolina 27615-3960  
NC License No. F-0112

Engineers | Construction Managers | Planners | Scientists  
www.rkk.com  
Responsive People | Creative Solutions