

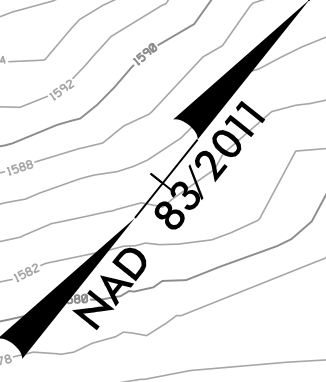
8/17/99  
10/23/2023  
R:\Highways\CAAD\PSH\Erosion\_Control\158661\_EC\_psh20.dgn

-Y12-  
PI Sta 38+31.35  
 $\Delta = 13^{\circ} 36' 06.4" (RT)$   
 $D = 0^{\circ} 59' 16.3"$   
 $L = 1,376.90'$   
 $T = 691.70'$   
 $R = 5,800.00'$   
 $DS = 60 MPH$   
 $SF = EXIST.$

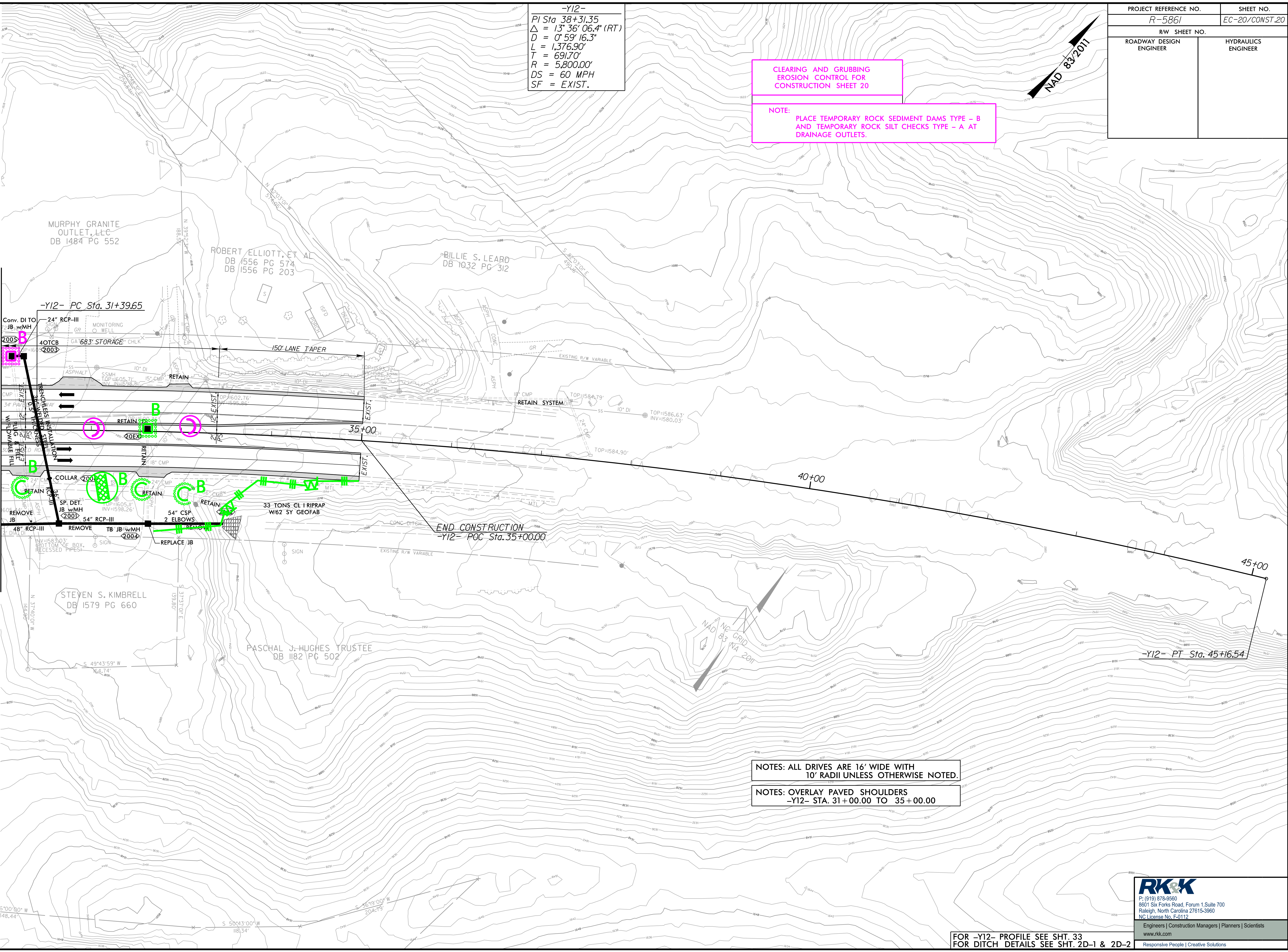
PROJECT REFERENCE NO. R-5861	SHEET NO. EC-20/CONST.20
RW SHEET NO.	
ROADWAY DESIGN ENGINEER	HYDRAULICS ENGINEER

CLEARING AND GRUBBING  
EROSION CONTROL FOR  
CONSTRUCTION SHEET 20

NOTE:  
PLACE TEMPORARY ROCK SEDIMENT DAMS TYPE - B  
AND TEMPORARY ROCK SILT CHECKS TYPE - A AT  
DRAINAGE OUTLETS.



MATCHLINE -Y12- STA. 31+00 SEE SHEET 19



NOTES: ALL DRIVES ARE 16' WIDE WITH  
10' RADII UNLESS OTHERWISE NOTED.

NOTES: OVERLAY PAVED SHOULDERS  
-Y12- STA. 31+00.00 TO 35+00.00

**RK&K**  
P: (919) 878-9560  
8601 Six Forks Road, Forum 1, Suite 700  
Raleigh, North Carolina 27615-3960  
NC License No. F-0112

Engineers | Construction Managers | Planners | Scientists  
www.rkk.com  
Responsive People | Creative Solutions

FOR -Y12- PROFILE SEE SHT. 33  
FOR DITCH DETAILS SEE SHT. 2D-1 & 2D-2