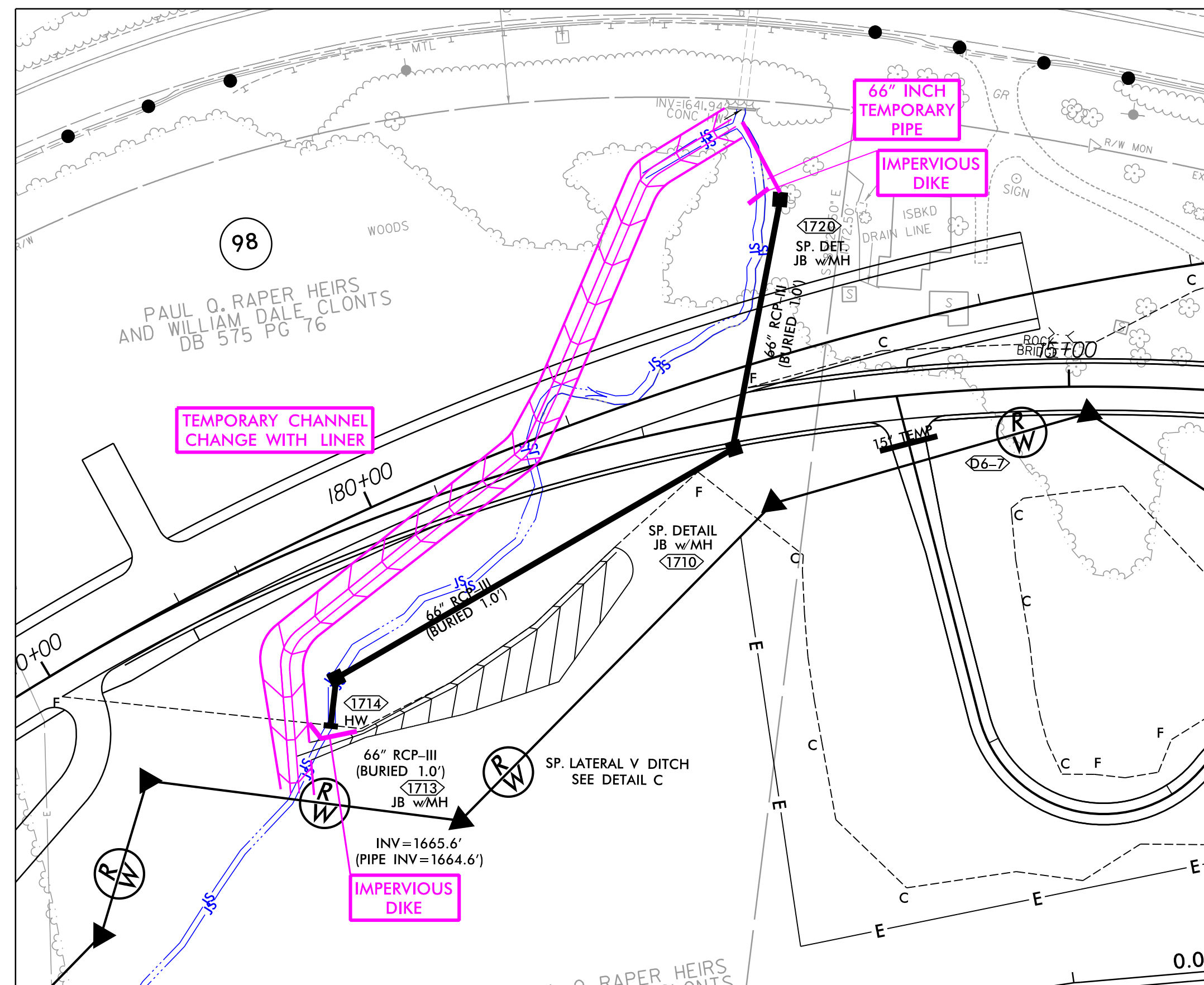


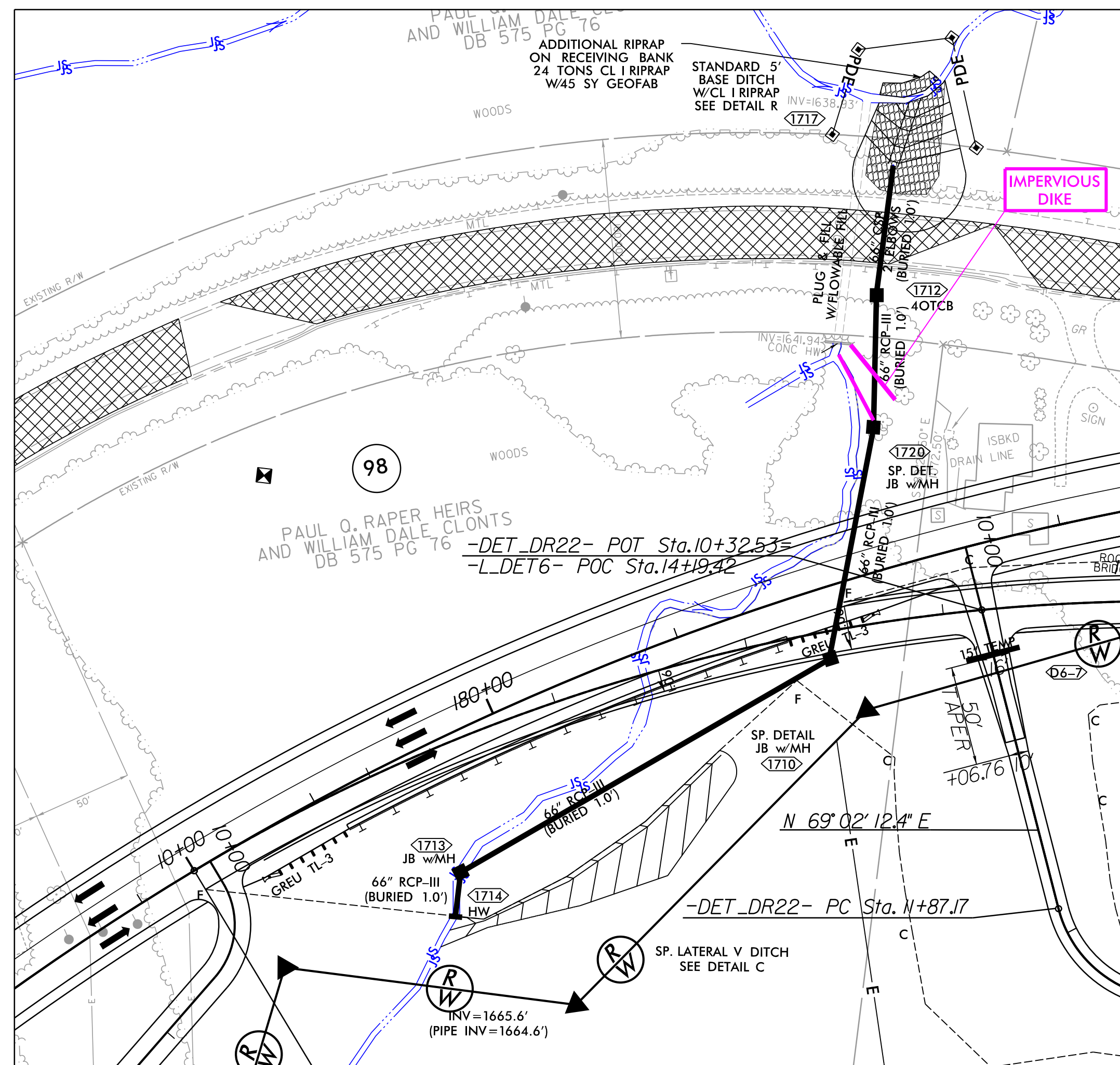
PROJECT REFERENCE NO. R-5861	SHEET NO. EC-17A/CONST.17A
RW SHEET NO.	
ROADWAY DESIGN ENGINEER	HYDRAULICS ENGINEER

NAD 83/2011



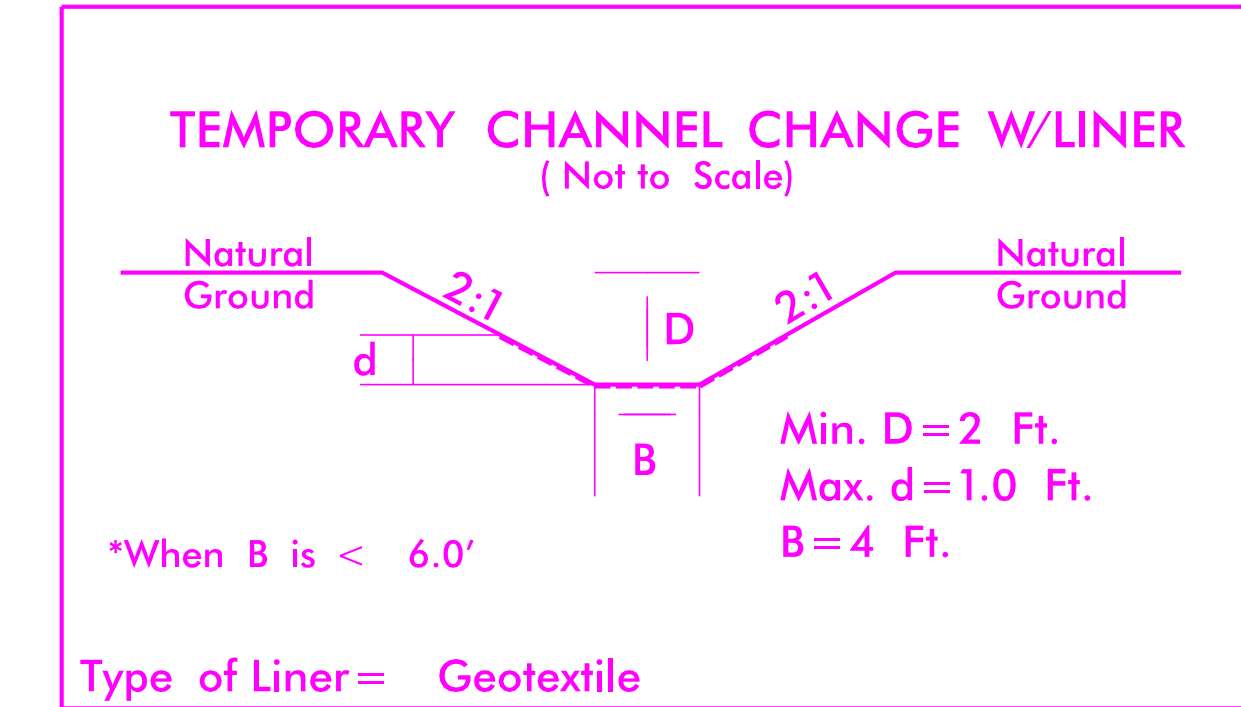
PIPE INSTALLATION SEQUENCE 1 STA. 182+00 -L-

- BEFORE -L_DET6- CONSTRUCTION BEGINS, INSTALL PROPOSED TEMPORARY CHANNEL WITH LINER, INSTALL IMPERVIOUS DIKES AND UTILIZE SPECIAL STILLING BASINS AS NEEDED.
- WHEN TEMPORARY CHANNEL IS COMPLETE, START TO FILL IN AREA FROM STRUCTURE # 1720 TO DETOUR TO MEET DETOUR ROADWAY GRADES AND PROPOSED DESIGN (SEE TRAFFIC CONTROL PHASE 2 PLANS).
- CONSTRUCT SP. LATERAL V DITCH, SEE DETAIL C.
- CONSTRUCT PROPOSED HW # 1714, PROPOSED JB w/MH # 1713, # 1710 AND # 1720 AND 66" RCP BETWEEN STRUCTURES AS SHOWN ON PLANS.
- INSTALL TEMPORARY 66" PIPE FROM THE FINAL JB # 1720 DOWN TO THE PREVIOUSLY CONSTRUCTED TEMPORARY CHANNEL CHANGE, MAINTAINING FLOW THROUGH THE EXISTING 48" CMP UNDER THE EXISTING ROADWAY.
- REMOVE IMPERVIOUS DIKES AND TEMPORARY CHANNEL CHANGE TO DIVERT FLOW INTO THE STORM DRAINAGE SYSTEM
- FINISH CONSTRUCTION OF DETOUR -L_DET6- ACCORDING TO ROADWAY AND TCP PLANS & OPEN TO TRAFFIC.



PIPE INSTALLATION SEQUENCE 2 STA. 182+00 -L-

- INSTALL IMPERVIOUS DIKES AS SHOWN TO CONTINUE DIVERTING FLOW THROUGH THE EXISTING 48" CMP FROM STRUCTURE # 1720
- INSTALL PROPOSED STD. 5' BASE DITCH (DETAIL R) AT OUTLET, 4OTCB #1712 AND 66" CSP BETWEEN STRUCTURES. WHILE STILL MAINTAINING FLOW THROUGH EXISTING 48" PIPE.
- REMOVE 66" TEMPORARY PIPE AND IMPERVIOUS DIKE AT STRUCTURE #1720 AND UTILIZE TEMPORARY PUMP AROUNDS AS NECESSARY TO CONNECT FINAL 66" RCP BETWEEN STRUCTURES #1720 & #1712.
- MAINTAIN DETOUR DRAINAGE AS PROPOSED ROADWAY CONDITIONS ARE BUILT.
- INSTALL PROPOSED DRAINAGE AS CONSTRUCTION ALLOWS AND REMOVE SPECIAL STILLING BASINS.
- SHIFT TRAFFIC TO PROPOSED ROADWAY AND REMOVE DETOUR.



8/17/99

8/18/2023 R:\Projects\Public\CA\DD\PSH\ER\oson_Contr\1\RB5861_EC_psh17A.dgn