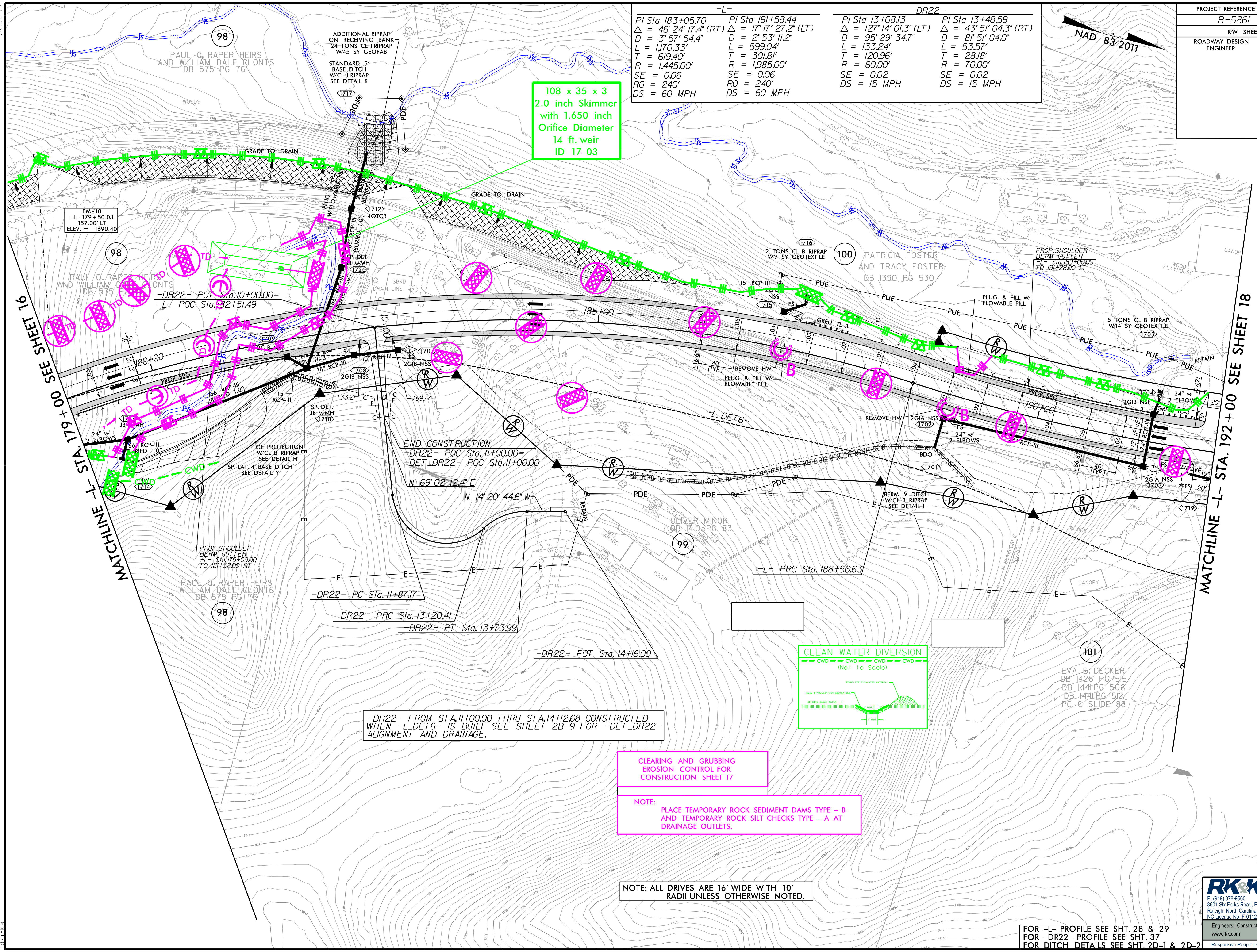


PROJECT REFERENCE NO.	SHEET NO.
R-5861	EC-17/CONST.17
RW SHEET NO.	
ROADWAY DESIGN ENGINEER	HYDRAULICS ENGINEER

-L-		-DR22-	
PI Sta 183+05.70	PI Sta 191+58.44	PI Sta 13+08.13	PI Sta 13+48.59
$\Delta = 46' 24' 17.4" (RT)$	$\Delta = 17' 17' 27.2" (LT)$	$\Delta = 127' 14' 01.3" (LT)$	$\Delta = 43' 51' 04.3" (RT)$
D = 3' 57' 54.4"	D = 2' 53' 11.2"	D = 95' 29' 34.7"	D = 81' 51' 04.0"
L = 1,170.33'	L = 599.04'	L = 133.24'	L = 53.57'
T = 619.40'	T = 301.81'	T = 120.96'	T = 28.18'
R = 1,445.00'	R = 1,985.00'	R = 60.00'	R = 70.00'
SE = 0.06	SE = 0.06	SE = 0.02	SE = 0.02
RO = 240'	RO = 240'	DS = 15 MPH	DS = 15 MPH
DS = 60 MPH	DS = 60 MPH		

NAD 83/2011

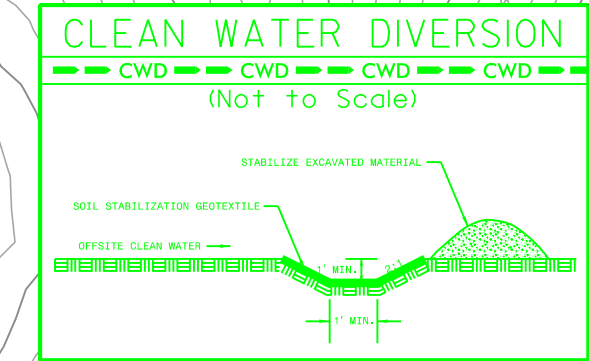
108 x 35 x 3
2.0 inch Skimmer
with 1.650 inch
Orifice Diameter
14 ft. weir
ID 17-03



MATCHLINE -L- STA. 179+00 SEE SHEET 16

MATCHLINE -L- STA. 192+00 SEE SHEET 18

-DR22- FROM STA.11+00.00 THRU STA.14+12.68 CONSTRUCTED WHEN -L-DET6- IS BUILT SEE SHEET 2B-9 FOR -DET_DR22- ALIGNMENT AND DRAINAGE.



CLEARING AND GRUBBING
EROSION CONTROL FOR
CONSTRUCTION SHEET 17

NOTE:
PLACE TEMPORARY ROCK SEDIMENT DAMS TYPE - B
AND TEMPORARY ROCK SILT CHECKS TYPE - A AT
DRAINAGE OUTLETS.

NOTE: ALL DRIVES ARE 16' WIDE WITH 10'
RADIUS UNLESS OTHERWISE NOTED.

FOR -L- PROFILE SEE SHT. 28 & 29
FOR -DR22- PROFILE SEE SHT. 37
FOR DITCH DETAILS SEE SHT. 2D-1 & 2D-2

RK&K
P: (919) 878-9560
8601 Six Forks Road, Forum 1, Suite 700
Raleigh, North Carolina 27615-3960
NC License No. F-0112

Engineers | Construction Managers | Planners | Scientists
www.rkk.com
Responsive People | Creative Solutions

R:\18\2023\RA\Highways\CAAD\PSH\Erosion_Control\R5861_EC_psh17.dgn