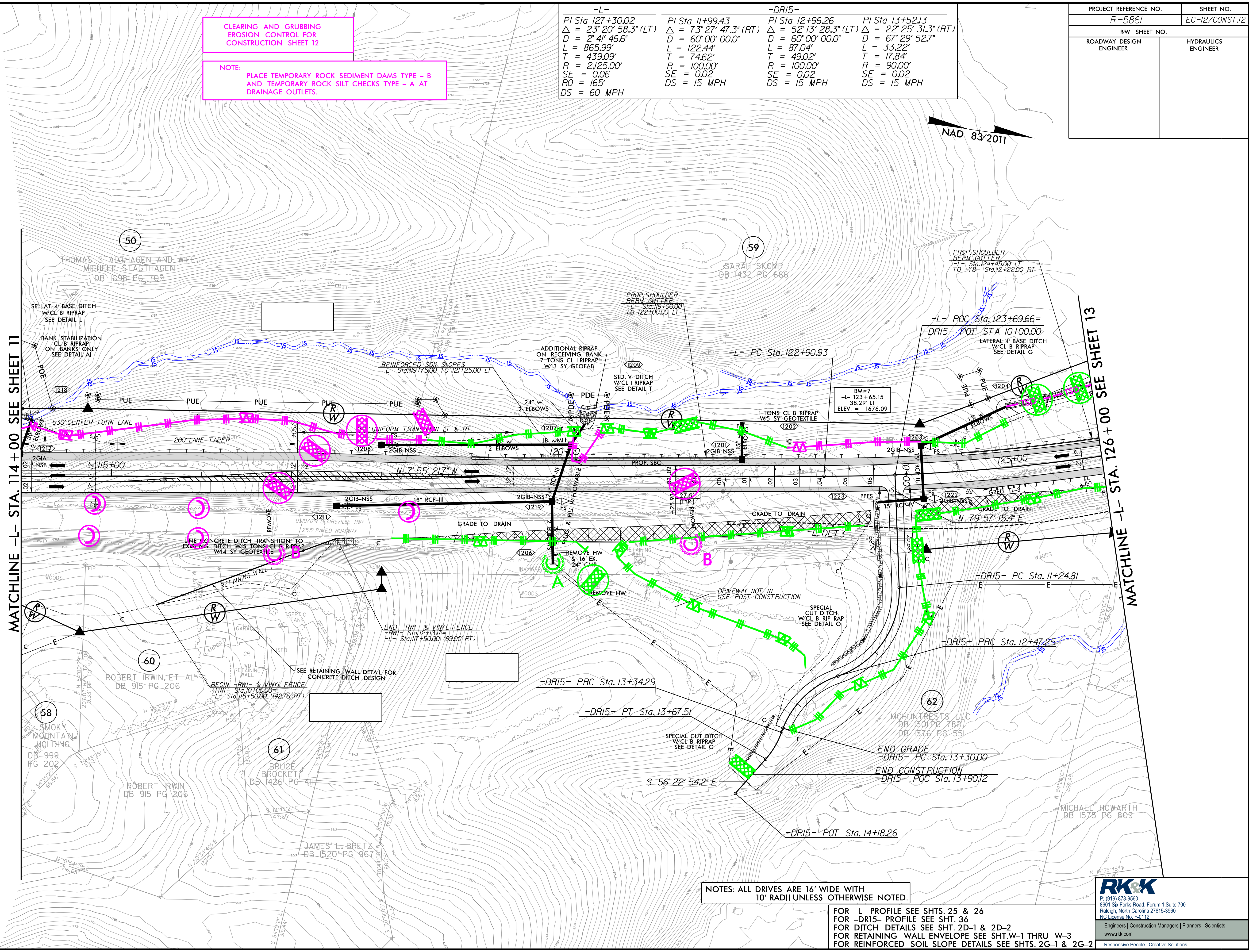


8/17/99
 R:\18\2023\RA\Highways\CADD\PSH\Erosion_Control\RS861_EC_psh12.dgn
 8/18/2023
 R:\Highways\CADD\PSH\Erosion_Control\RS861_EC_psh12.dgn



**CLEARING AND GRUBBING
EROSION CONTROL FOR
CONSTRUCTION SHEET 12**

NOTE:
PLACE TEMPORARY ROCK SEDIMENT DAMS TYPE - B
AND TEMPORARY ROCK SILT CHECKS TYPE - A AT
DRAINAGE OUTLETS.

-L-	-DR15-	-DR15-	-DR15-
PI Sta 127+30.02	PI Sta 11+99.43	PI Sta 12+96.26	PI Sta 13+52.13
$\Delta = 23^{\circ} 20' 58.3" (LT)$	$\Delta = 73^{\circ} 27' 47.3" (RT)$	$\Delta = 52^{\circ} 13' 28.3" (LT)$	$\Delta = 22^{\circ} 25' 31.3" (RT)$
D = 2' 41' 46.6"	D = 60' 00' 00.0"	D = 60' 00' 00.0"	D = 67' 29' 52.7"
L = 865.99'	L = 122.44'	L = 87.04'	L = 33.22'
T = 439.09'	T = 74.62'	T = 49.02'	T = 17.84'
R = 2125.00'	R = 100.00'	R = 100.00'	R = 90.00'
SE = 0.06	SE = 0.02	SE = 0.02	SE = 0.02
RO = 165'	DS = 15 MPH	DS = 15 MPH	DS = 15 MPH

PROJECT REFERENCE NO. R-5861	SHEET NO. EC-12/CONST.12
RW SHEET NO.	
ROADWAY DESIGN ENGINEER	HYDRAULICS ENGINEER

MATCHLINE -L- STA. 114+00 SEE SHEET 11

MATCHLINE -L- STA. 126+00 SEE SHEET 13

NAD 83/2011

**NOTES: ALL DRIVES ARE 16' WIDE WITH
10' RADII UNLESS OTHERWISE NOTED.**

FOR -L- PROFILE SEE SHTS. 25 & 26
 FOR -DR15- PROFILE SEE SHT. 36
 FOR DITCH DETAILS SEE SHT. 2D-1 & 2D-2
 FOR RETAINING WALL ENVELOPE SEE SHT. W-1 THRU W-3
 FOR REINFORCED SOIL SLOPE DETAILS SEE SHTS. 2G-1 & 2G-2

RK&K
 P: (919) 878-9560
 8601 Six Forks Road, Forum 1 Suite 700
 Raleigh, North Carolina 27615-3960
 NC License No. F-0112
 Engineers | Construction Managers | Planners | Scientists
 www.rk&k.com
 Responsive People | Creative Solutions