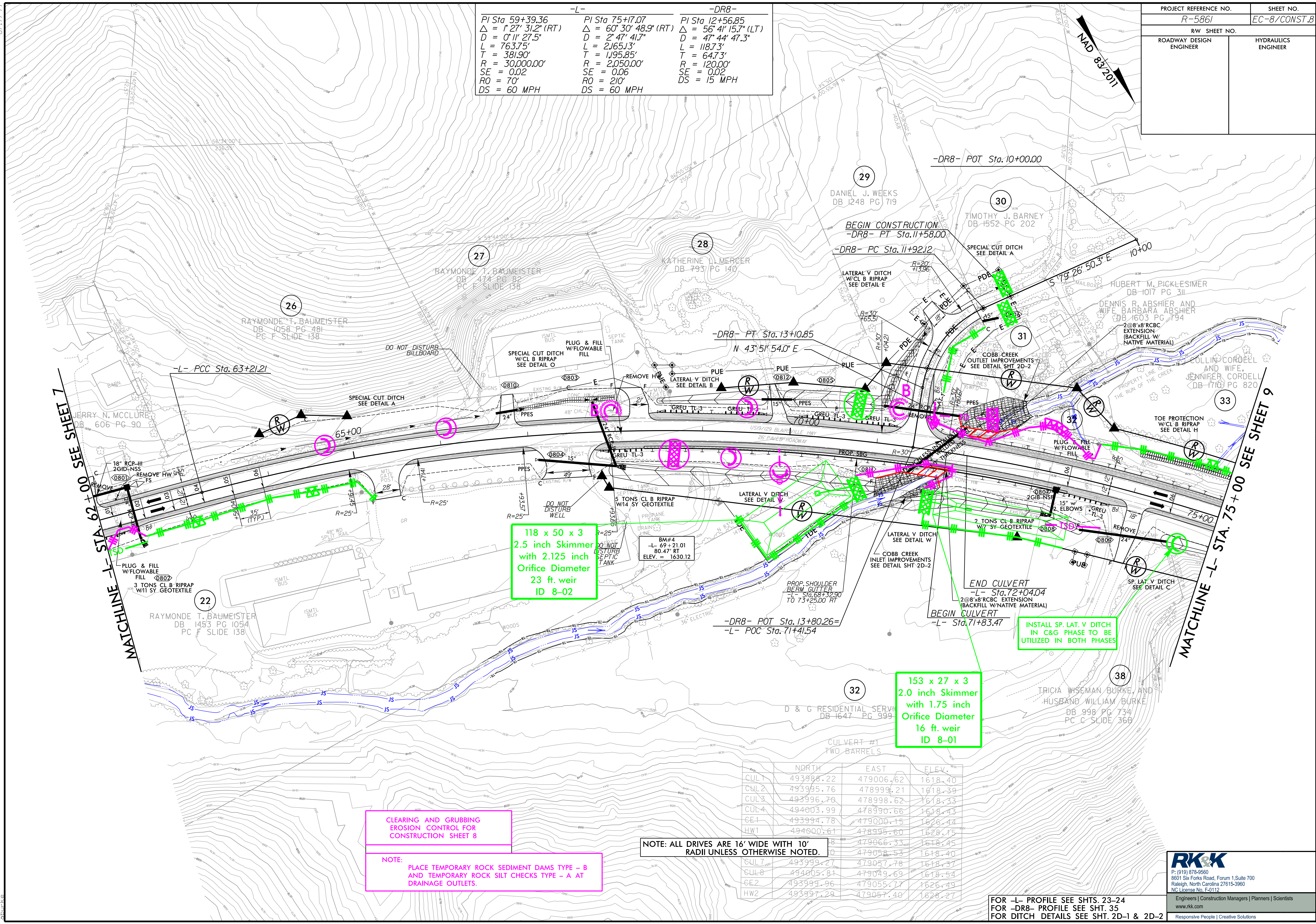
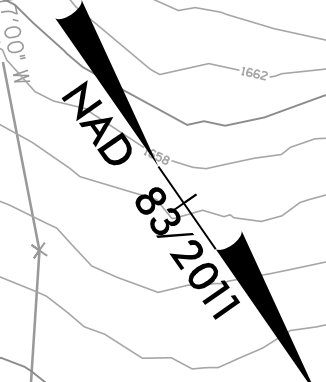


PROJECT REFERENCE NO.	SHEET NO.
R-5861	EC-8/CONST.8
RW SHEET NO.	
ROADWAY DESIGN ENGINEER	HYDRAULICS ENGINEER

-L-	-DR8-	-DR8-
PI Sta 59+39.36	PI Sta 75+17.07	PI Sta 12+56.85
$\Delta = 1' 27" 31.2" (RT)$	$\Delta = 60' 30" 48.9" (RT)$	$\Delta = 56' 41" 15.7" (LT)$
$D = 0' 11" 27.5"$	$D = 2' 47" 41.7"$	$D = 47' 44" 47.3"$
$L = 763.75'$	$L = 2,165.13'$	$L = 118.73'$
$T = 381.90'$	$T = 1,195.85'$	$T = 64.73'$
$R = 30,000.00'$	$R = 2,050.00'$	$R = 120.00'$
$SE = 0.02$	$SE = 0.06$	$SE = 0.02$
$RO = 70'$	$RO = 210'$	$DS = 15 MPH$
$DS = 60 MPH$	$DS = 60 MPH$	



118 x 50 x 3
2.5 inch Skimmer
with 2.125 inch
Orifice Diameter
23 ft. weir
ID 8-02

153 x 27 x 3
2.0 inch Skimmer
with 1.75 inch
Orifice Diameter
16 ft. weir
ID 8-01

CLEARING AND GRUBBING
EROSION CONTROL FOR
CONSTRUCTION SHEET 8

NOTE:
PLACE TEMPORARY ROCK SEDIMENT DAMS TYPE - B
AND TEMPORARY ROCK SILT CHECKS TYPE - A AT
DRAINAGE OUTLETS.

NOTE: ALL DRIVES ARE 16' WIDE WITH 10'
RADIUS UNLESS OTHERWISE NOTED.

	NORTH	EAST	ELEV.
CUL1	493988.22	479006.62	1618.40
CUL2	493995.76	478999.21	1618.39
CUL3	493996.70	478998.21	1618.33
CUL4	494003.99	478990.66	1618.43
GE1	493994.78	479000.15	1626.44
HW1	494000.61	478995.60	1628.15
		479066.33	1618.45
		479058.53	1618.40
SUL7	493999.27	479057.78	1618.37
SUL8	494005.81	479049.69	1618.54
GE2	493999.96	479055.77	1626.49
HW2	493997.29	479057.40	1628.27

FOR -L- PROFILE SEE SHTS. 23-24
FOR -DR8- PROFILE SEE SHT. 35
FOR DITCH DETAILS SEE SHT. 2D-1 & 2D-2



8/17/2023
R:\Projects\1923\1923-001\1923-001.dgn
Control\1923-001.dgn