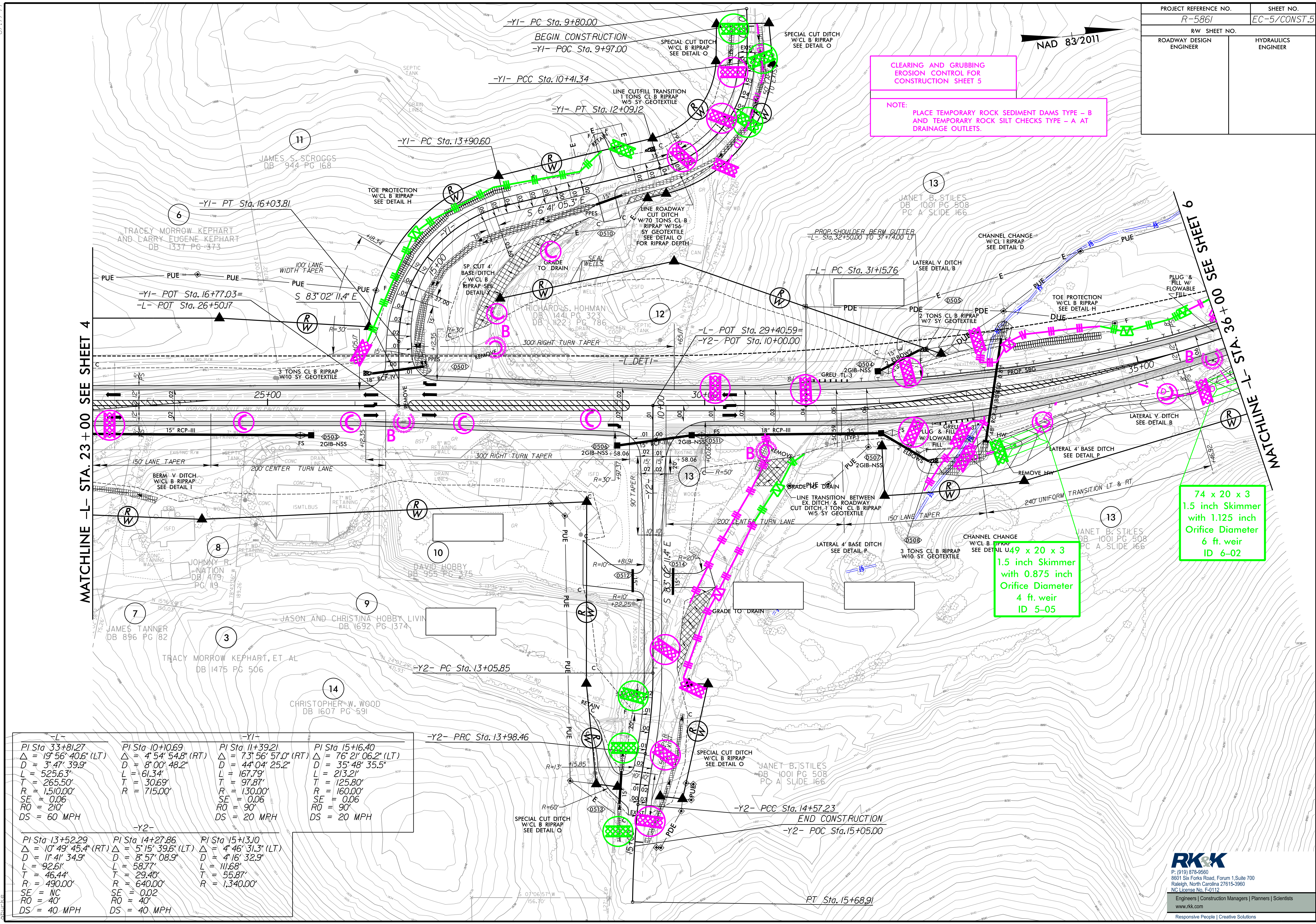


PROJECT REFERENCE NO. R-5861	SHEET NO. EC-5/CONST.5
RW SHEET NO.	
ROADWAY DESIGN ENGINEER	HYDRAULICS ENGINEER

NAD 83/2011

CLEARING AND GRUBBING EROSION CONTROL FOR CONSTRUCTION SHEET 5

NOTE: PLACE TEMPORARY ROCK SEDIMENT DAMS TYPE - B AND TEMPORARY ROCK SILT CHECKS TYPE - A AT DRAINAGE OUTLETS.



<p>-L-</p> <p>PI Sta 33+81.27 Δ = 19° 56' 40.6" (LT) D = 3' 47' 39.9" L = 525.63' T = 265.50' R = 1510.00' SE = 0.06 RO = 210' DS = 60 MPH</p>	<p>-Y1-</p> <p>PI Sta 10+10.69 Δ = 4° 54' 54.8" (RT) D = 8' 00' 48.2" L = 61.34' T = 30.69' R = 715.00'</p>	<p>PI Sta 11+39.21 Δ = 73° 56' 57.0" (RT) D = 44' 04' 25.2" L = 167.79' T = 97.87' R = 130.00' SE = 0.06 RO = 90' DS = 20 MPH</p>	<p>PI Sta 15+16.40 Δ = 76° 21' 06.2" (LT) D = 35' 48' 35.5" L = 213.21' T = 125.80' R = 160.00' SE = 0.06 RO = 90' DS = 20 MPH</p>
<p>-Y2-</p> <p>PI Sta 13+52.29 Δ = 10° 49' 45.4" (RT) D = 11' 41' 34.9" L = 92.61' T = 46.44' R = 490.00' SE = NC RO = 40' DS = 40 MPH</p>	<p>PI Sta 14+27.86 Δ = 5° 15' 39.6" (LT) D = 8' 57' 08.9" L = 58.77' T = 29.40' R = 640.00' SE = 0.02 RO = 40' DS = 40 MPH</p>	<p>PI Sta 15+13.10 Δ = 4° 46' 31.3" (LT) D = 4' 16' 32.9" L = 111.68' T = 55.87' R = 1,340.00'</p>	

74 x 20 x 3
1.5 inch Skimmer
with 1.125 inch
Orifice Diameter
6 ft. weir
ID 6-02

149 x 20 x 3
1.5 inch Skimmer
with 0.875 inch
Orifice Diameter
4 ft. weir
ID 5-05