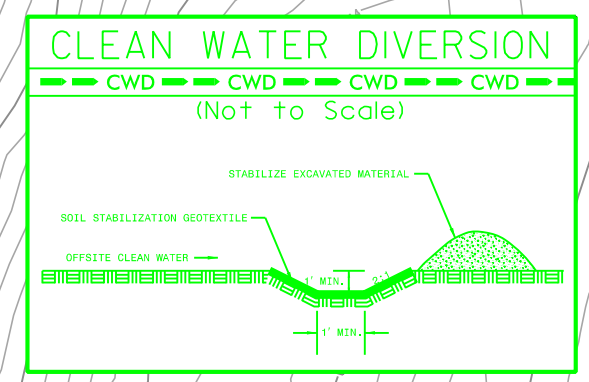


-L-	-DRI-	-DR2-	
PI Sta 12+56.73 Δ = 24°05'46" (LT) D = 6'09'39.0" L = 391.12' T = 198.49' R = 930.00' SE = 0.06 RO = 150' DS = 50 MPH	PI Sta 10+80.09 Δ = 6°06'49.5" (LT) D = 7'01'48.6" L = 86.96' T = 43.52' R = 815.00' SE = 0.02 DS = 15 MPH	PI Sta 9+91.87 Δ = 13°05'15.7" (LT) D = 21'37'15.8" L = 60.53' T = 30.40' R = 265.00' SE = 0.02 DS = 15 MPH	PI Sta 10+50.35 Δ = 28°53'59.0" (RT) D = 52'05'13.5" L = 55.48' T = 28.35' R = 110.00' SE = 0.02 DS = 15 MPH



NAD 83/2011

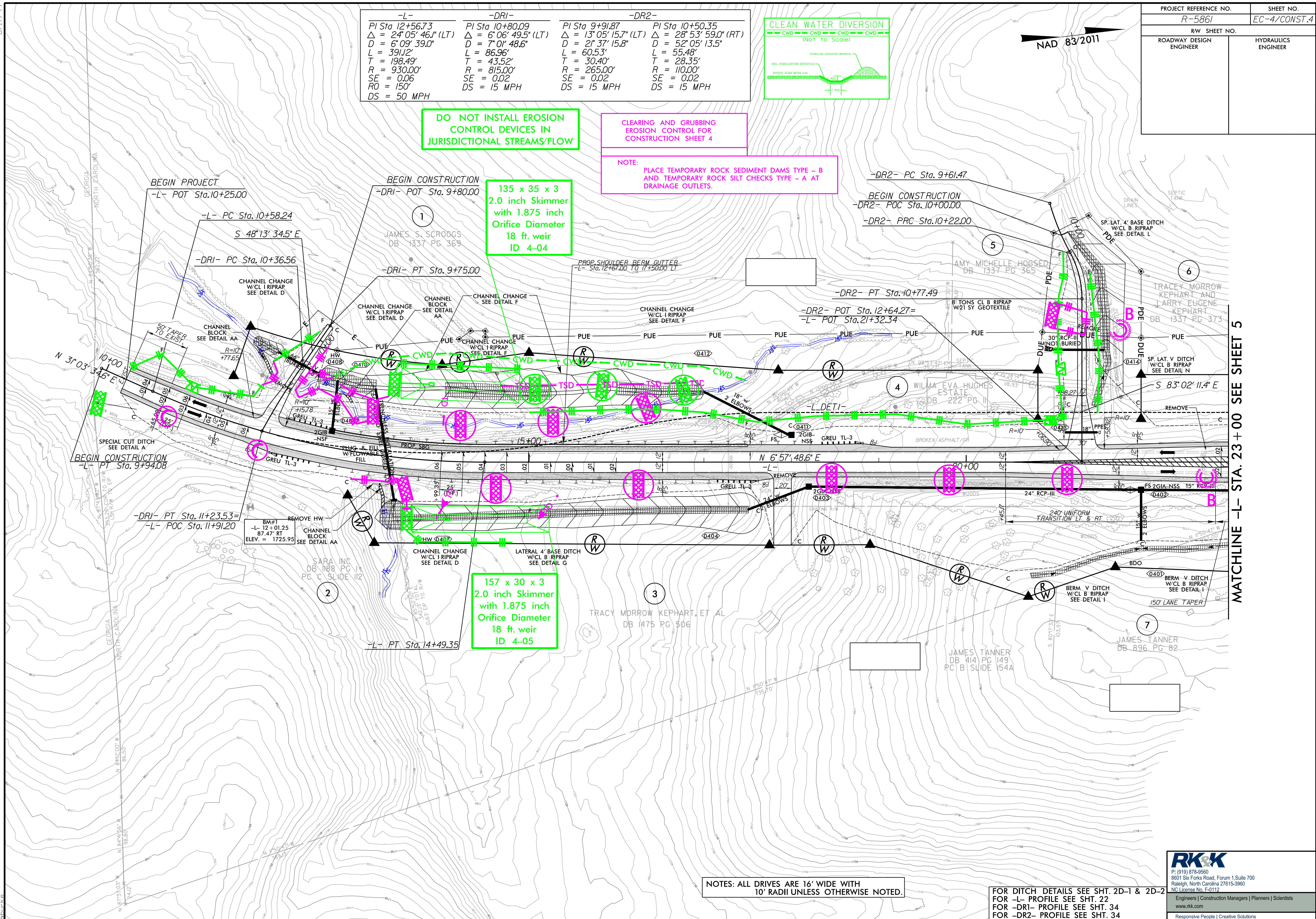
DO NOT INSTALL EROSION CONTROL DEVICES IN JURISDICTIONAL STREAMS/FLOW

CLEARING AND GRUBBING EROSION CONTROL FOR CONSTRUCTION SHEET 4

NOTE: PLACE TEMPORARY ROCK SEDIMENT DAMS TYPE - B AND TEMPORARY ROCK SILT CHECKS TYPE - A AT DRAINAGE OUTLETS.

**135 x 35 x 3
2.0 inch Skimmer
with 1.875 inch
Orifice Diameter
18 ft. weir
ID 4-04**

**157 x 30 x 3
2.0 inch Skimmer
with 1.875 inch
Orifice Diameter
18 ft. weir
ID 4-05**



MATCHLINE -L- STA. 23+00 SEE SHEET 5

NOTES: ALL DRIVES ARE 16' WIDE WITH 10' RADII UNLESS OTHERWISE NOTED.

**FOR DITCH DETAILS SEE SHT. 2D-1 & 2D-2
FOR -L- PROFILE SEE SHT. 22
FOR -DRI- PROFILE SEE SHT. 34
FOR -DR2- PROFILE SEE SHT. 34**

R:\Projects\19-001\19-001.dgn