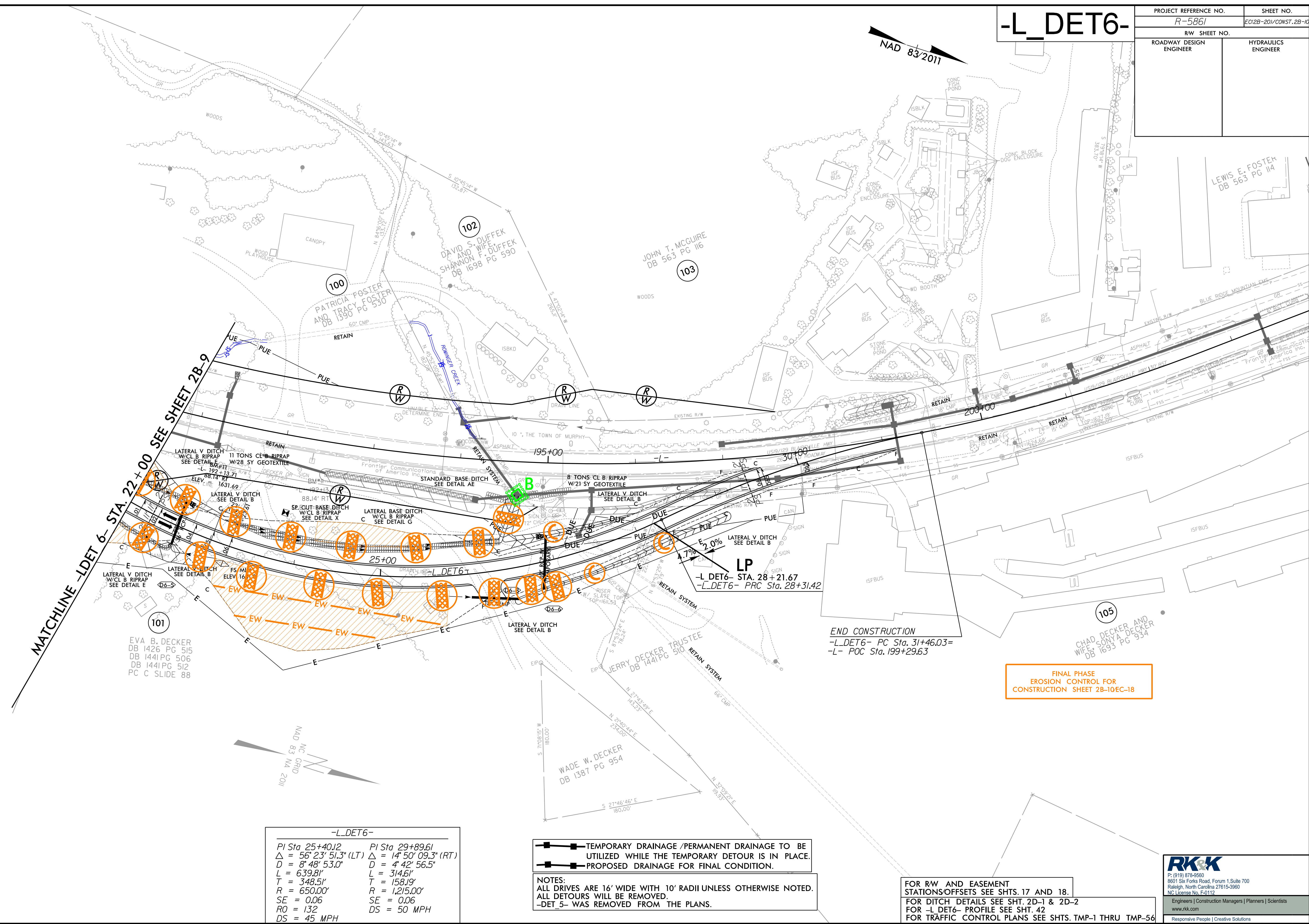


PROJECT REFERENCE NO. R-5861		SHEET NO. EC12B-201/CONST.2B-10	
RW SHEET NO.		HYDRAULICS ENGINEER	
ROADWAY DESIGN ENGINEER			

# -L\_DET6-



MATCHLINE -LDET 6- STA. 22+00 SEE SHEET 2B-9

101  
EVA B. DECKER  
DB 1426 PG 515  
DB 1441 PG 506  
DB 1441 PG 512  
PC C SLIDE 88

100  
PATRICIA FOSTER  
AND TRACY FOSTER  
DB 1590 PG 530

102  
DAVID S. DUFFEK  
AND WIFE  
SHANNON F. DUFFEK  
DB 1698 PG 590

103  
JOHN T. MCCUIRE  
DB 563 PG 116

105  
CHAD DECKER AND  
WIFE, SONYA DECKER  
DB 1693 PG 934

END CONSTRUCTION  
-L\_DET6- PC Sta. 31+46.03=  
-L- POC Sta. 199+29.63

FINAL PHASE  
EROSION CONTROL FOR  
CONSTRUCTION SHEET 2B-10EC-18

-L_DET6-	
PI Sta 25+40.12	PI Sta 29+89.61
$\Delta = 56^{\circ} 23' 51.3''$ (LT)	$\Delta = 14^{\circ} 50' 09.3''$ (RT)
$D = 8' 48' 53.0''$	$D = 4' 42' 56.5''$
$L = 639.81'$	$L = 314.61'$
$T = 348.51'$	$T = 158.19'$
$R = 650.00'$	$R = 1,215.00'$
$SE = 0.06$	$SE = 0.06$
$RO = 132$	$DS = 50$ MPH
$DS = 45$ MPH	

- TEMPORARY DRAINAGE /PERMANENT DRAINAGE TO BE UTILIZED WHILE THE TEMPORARY DETOUR IS IN PLACE.
- PROPOSED DRAINAGE FOR FINAL CONDITION.

NOTES:  
ALL DRIVES ARE 16' WIDE WITH 10' RADII UNLESS OTHERWISE NOTED.  
ALL DETOURS WILL BE REMOVED.  
-DET 5- WAS REMOVED FROM THE PLANS.

FOR R/W AND EASEMENT STATIONS/OFFSETS SEE SHTS. 17 AND 18.  
FOR DITCH DETAILS SEE SHT. 2D-1 & 2D-2  
FOR -L\_DET6- PROFILE SEE SHT. 42  
FOR TRAFFIC CONTROL PLANS SEE SHTS. TMP-1 THRU TMP-56

**RK&K**  
P: (919) 378-9550  
8601 Six Forks Road, Forum 1, Suite 700  
Raleigh, North Carolina 27615-3960  
NC License No. F-0112  
Engineers | Construction Managers | Planners | Scientists  
www.rk.com  
Responsive People | Creative Solutions

8/17/19  
8/18/2023  
R:\Projects\2023\Public\PSH\EROSION Control\1\RB861.EC.dsn\_DET\_6\_psh2B-20.dgn