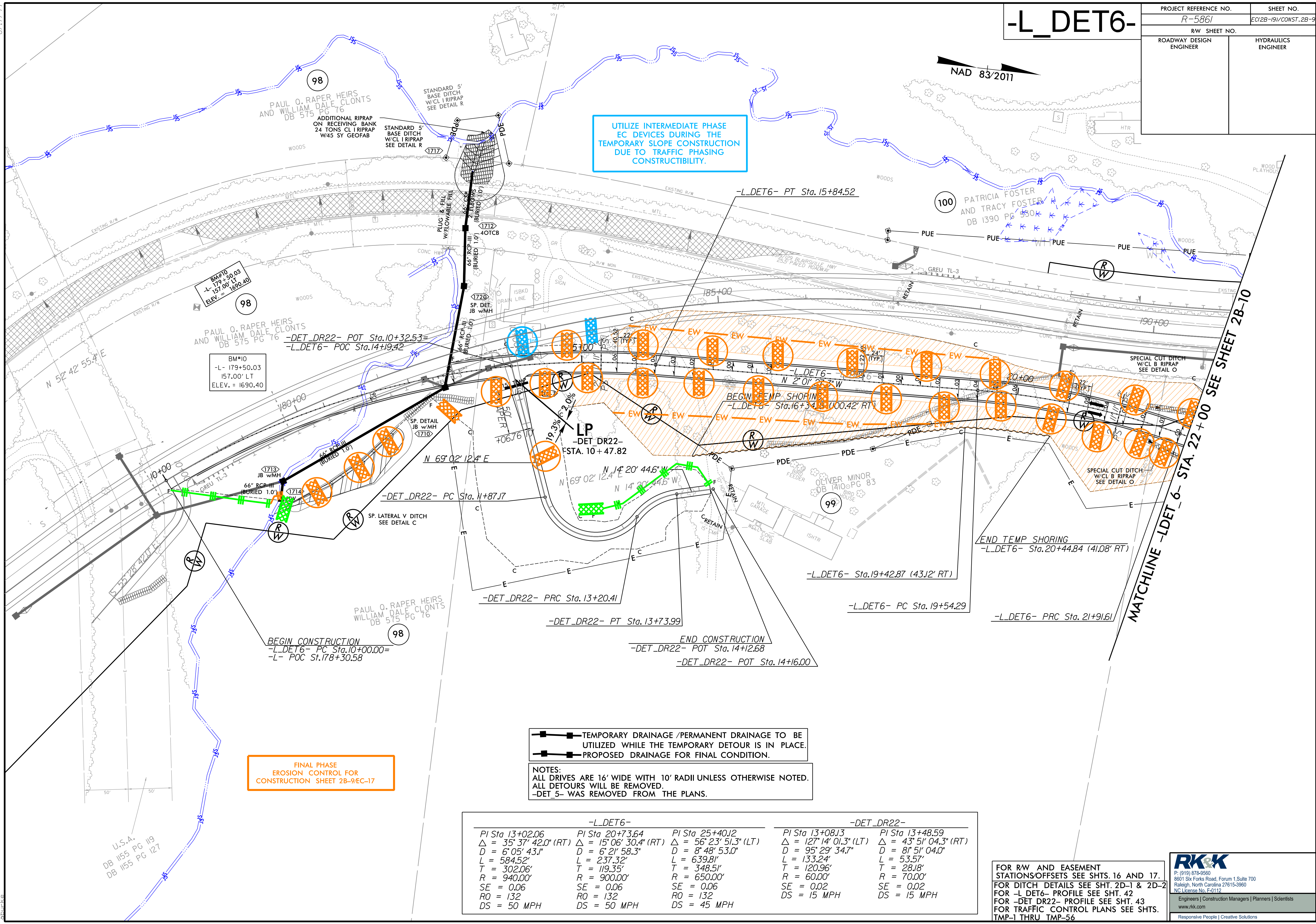


-L_DET6-

PROJECT REFERENCE NO. R-5861	SHEET NO. EC12B-19/CONST.2B-9
RW SHEET NO.	
ROADWAY DESIGN ENGINEER	HYDRAULICS ENGINEER

NAD 83/2011

UTILIZE INTERMEDIATE PHASE EC DEVICES DURING THE TEMPORARY SLOPE CONSTRUCTION DUE TO TRAFFIC PHASING CONSTRUCTIBILITY.



BM#10
-L- 179+50.03
157.00' LT
ELEV. = 1690.40

BM#10
-L- 179+50.03
157.00' LT
ELEV. = 1690.40

FINAL PHASE
EROSION CONTROL FOR
CONSTRUCTION SHEET 2B-9/EC-17

- TEMPORARY DRAINAGE / PERMANENT DRAINAGE TO BE UTILIZED WHILE THE TEMPORARY DETOUR IS IN PLACE.
- PROPOSED DRAINAGE FOR FINAL CONDITION.

NOTES:
ALL DRIVES ARE 16' WIDE WITH 10' RADII UNLESS OTHERWISE NOTED.
ALL DETOURS WILL BE REMOVED.
-DET_5- WAS REMOVED FROM THE PLANS.

-L_DET6-			-DET_DR22-		
PI Sta 13+02.06	PI Sta 20+73.64	PI Sta 25+40.12	PI Sta 13+08.13	PI Sta 13+48.59	
$\Delta = 35^\circ 37' 42.0''$ (RT)	$\Delta = 15^\circ 06' 30.4''$ (RT)	$\Delta = 56^\circ 23' 51.3''$ (LT)	$\Delta = 127^\circ 14' 01.3''$ (LT)	$\Delta = 43^\circ 51' 04.3''$ (RT)	
D = 6' 05' 43.1"	D = 6' 21' 58.3"	D = 8' 48' 53.0"	D = 95' 29' 34.7"	D = 8' 51' 04.0"	
L = 584.52'	L = 237.32'	L = 639.81'	L = 133.24'	L = 53.57'	
T = 302.06'	T = 119.35'	T = 348.51'	T = 120.96'	T = 28.18'	
R = 940.00'	R = 900.00'	R = 650.00'	R = 60.00'	R = 70.00'	
SE = 0.06	SE = 0.06	SE = 0.06	SE = 0.02	SE = 0.02	
RO = 132	RO = 132	RO = 132	DS = 15 MPH	DS = 15 MPH	
DS = 50 MPH	DS = 50 MPH	DS = 45 MPH			

FOR RW AND EASEMENT STATION/OFFSETS SEE SHTS. 16 AND 17.
FOR DITCH DETAILS SEE SHT. 2D-1 & 2D-2
FOR -L_DET6- PROFILE SEE SHT. 42
FOR -DET_DR22- PROFILE SEE SHT. 43
FOR TRAFFIC CONTROL PLANS SEE SHTS. TMP-1 THRU TMP-56

RKK
P: (919) 878-9560
8601 Six Forks Road, Forum 1, Suite 700
Raleigh, North Carolina 27615-3960
NC License No. F-0112
www.rkk.com
Responsive People | Creative Solutions

8/17/2023 R:\Projects\195861\195861_EC.dwg -L_DET6-19.dwg