

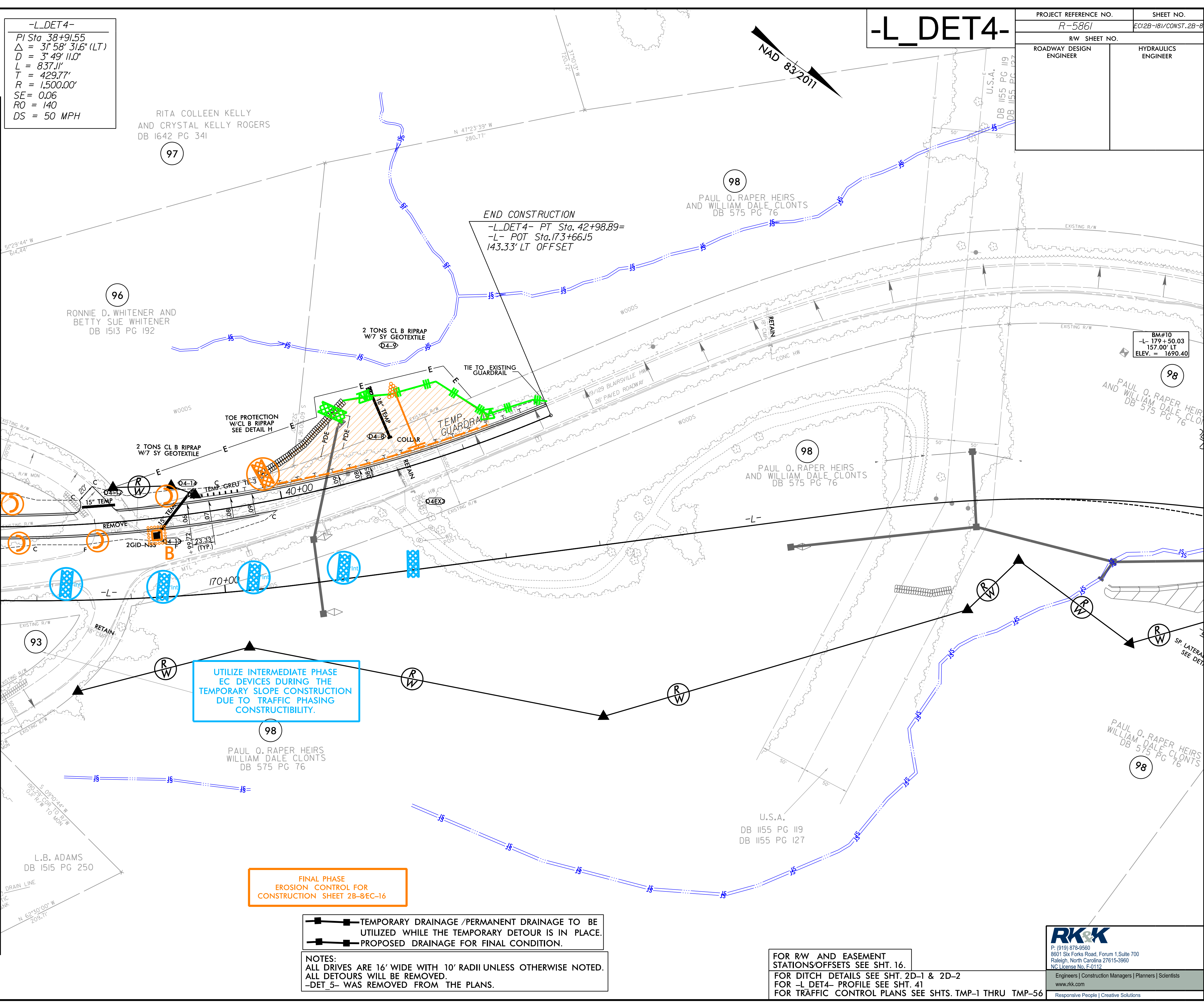
8/17/99
R:\18\2023\RA\Highways\CADD\PSH\Erosion_Control\185861_EC_dan_DET_4_psh2B-18.dgn

-L_DET4-
PI Sta 38+91.55
Δ = 31' 58" 31.6" (LT)
D = 3' 49" 11.0"
L = 837.11'
T = 429.77'
R = 1,500.00'
SE = 0.06
RO = 140
DS = 50 MPH

-L_DET4-

PROJECT REFERENCE NO.	SHEET NO.
R-5861	EC12B-18/CONST. 2B-8
RW SHEET NO.	
ROADWAY DESIGN ENGINEER	HYDRAULICS ENGINEER

MATCHLINE -L_DET4- STA. 37+00 SEE SHEET 2B-7



UTILIZE INTERMEDIATE PHASE EC DEVICES DURING THE TEMPORARY SLOPE CONSTRUCTION DUE TO TRAFFIC PHASING CONSTRUCTIBILITY.

FINAL PHASE EROSION CONTROL FOR CONSTRUCTION SHEET 2B-8EC-16

- TEMPORARY DRAINAGE /PERMANENT DRAINAGE TO BE UTILIZED WHILE THE TEMPORARY DETOUR IS IN PLACE.
- - - ■ - - - PROPOSED DRAINAGE FOR FINAL CONDITION.

NOTES:
ALL DRIVES ARE 16' WIDE WITH 10' RADII UNLESS OTHERWISE NOTED.
ALL DETOURS WILL BE REMOVED.
-DET_5- WAS REMOVED FROM THE PLANS.

FOR RW AND EASEMENT STATION/OFFSETS SEE SHT. 16.
FOR DITCH DETAILS SEE SHT. 2D-1 & 2D-2
FOR -L_DET4- PROFILE SEE SHT. 41
FOR TRAFFIC CONTROL PLANS SEE SHTS. TMP-1 THRU TMP-56

P: (919) 878-9560
8601 Six Forks Road, Forum 1, Suite 700
Raleigh, North Carolina 27615-3960
NC License No. F-0112
www.rkk.com
Engineers | Construction Managers | Planners | Scientists
Responsive People | Creative Solutions