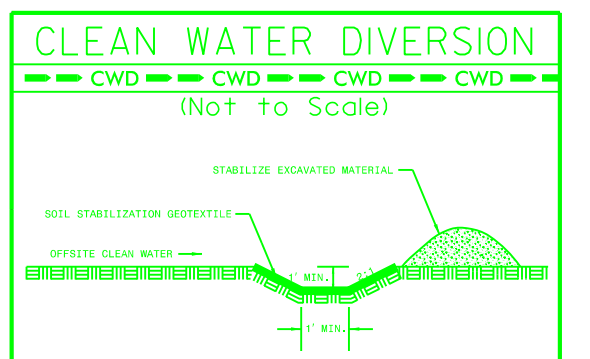


-L_DET2-

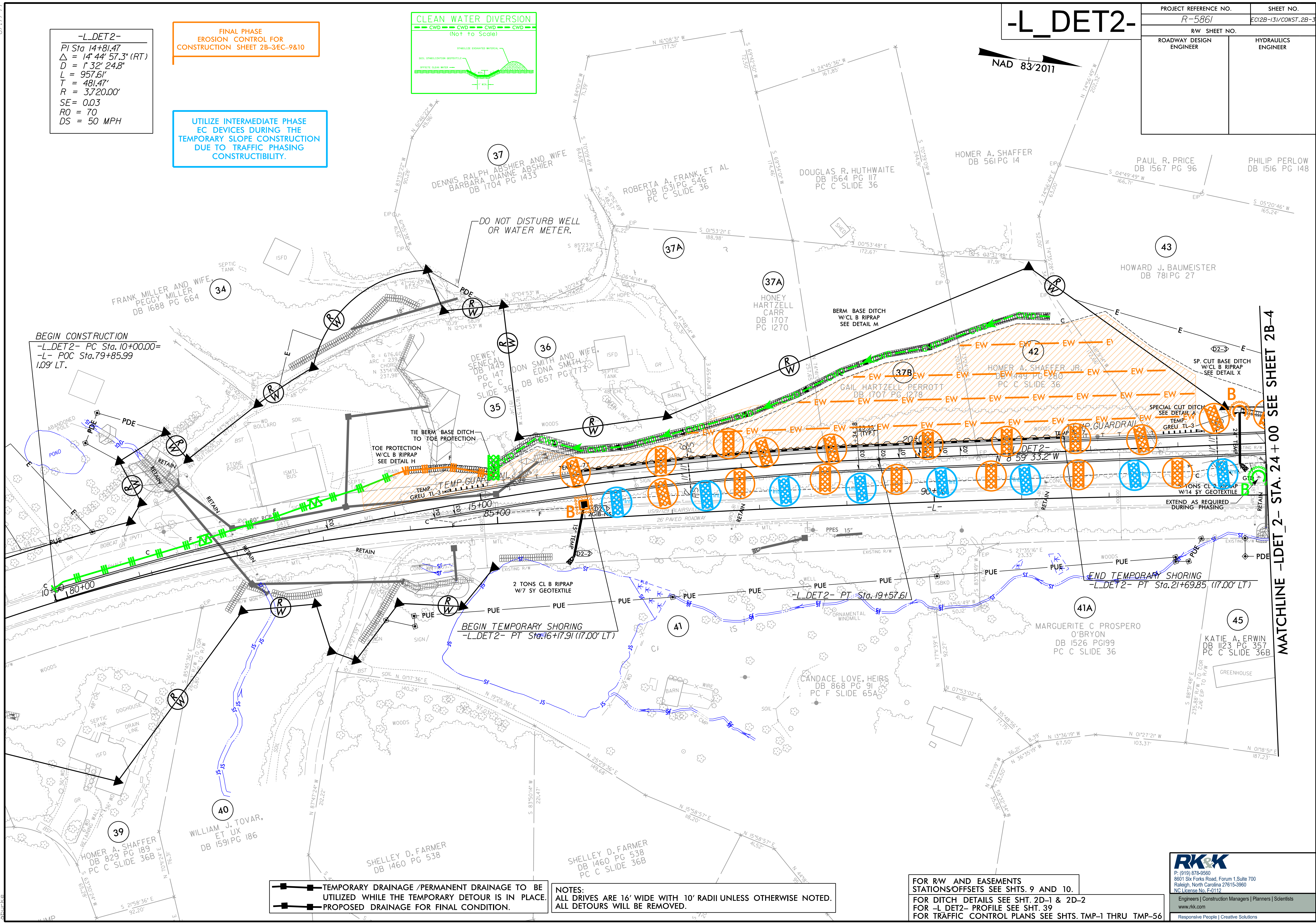
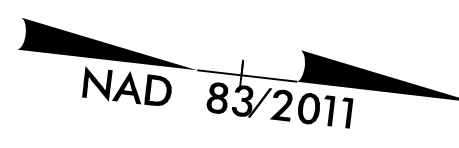
PROJECT REFERENCE NO. R-5861	SHEET NO. EC12B-13/CONST.2B-3
RW SHEET NO.	
ROADWAY DESIGN ENGINEER	HYDRAULICS ENGINEER

-L_DET2-
 PI Sta 14+81.47
 $\Delta = 14' 44" 57.3" (RT)$
 $D = 1' 32" 24.8"$
 $L = 957.61'$
 $T = 481.47'$
 $R = 3,720.00'$
 $SE = 0.03$
 $RO = 70$
 $DS = 50 MPH$

**FINAL PHASE
EROSION CONTROL FOR
CONSTRUCTION SHEET 2B-3EC-9&10**



**UTILIZE INTERMEDIATE PHASE
EC DEVICES DURING THE
TEMPORARY SLOPE CONSTRUCTION
DUE TO TRAFFIC PHASING
CONSTRUCTIBILITY.**



BEGIN CONSTRUCTION
 -L_DET2- PC Sta. 10+00.00=
 -L- POC Sta. 79+85.99
 1.09' LT.

BEGIN TEMPORARY SHORING
 -L_DET2- PT Sta. 16+17.91 (17.00' LT)

END TEMPORARY SHORING
 -L_DET2- PT Sta. 21+69.85 (17.00' LT)

— TEMPORARY DRAINAGE / PERMANENT DRAINAGE TO BE UTILIZED WHILE THE TEMPORARY DETOUR IS IN PLACE.
 — PROPOSED DRAINAGE FOR FINAL CONDITION.

NOTES:
 ALL DRIVES ARE 16' WIDE WITH 10' RADII UNLESS OTHERWISE NOTED.
 ALL DETOURS WILL BE REMOVED.

**FOR RW AND EASEMENTS
STATIONS/OFFSETS SEE SHTS. 9 AND 10.**
**FOR DITCH DETAILS SEE SHT. 2D-1 & 2D-2
FOR -L_DET2- PROFILE SEE SHT. 39**
FOR TRAFFIC CONTROL PLANS SEE SHTS. TMP-1 THRU TMP-56

RKK
 P: (919) 878-9560
 8601 Six Forks Road, Forum 1, Suite 700
 Raleigh, North Carolina 27615-3960
 NC License No. F-0112
 Engineers | Construction Managers | Planners | Scientists
 www.rkk.com
 Responsive People | Creative Solutions

MATCHLINE -L_DET2- STA. 24+00 SEE SHEET 2B-4

R:\18\2023\RA\Highways\18\CAAD\PSH\Erosion_Control\R5861_EC_dan_DET2.psh2B-13.dgn