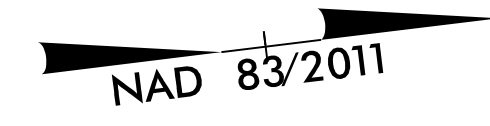


PROJECT REFERENCE NO. R-5861	SHEET NO. EC12B-III/CONST.2B-1
RW SHEET NO.	
ROADWAY DESIGN ENGINEER	HYDRAULICS ENGINEER

# -L\_DET1-

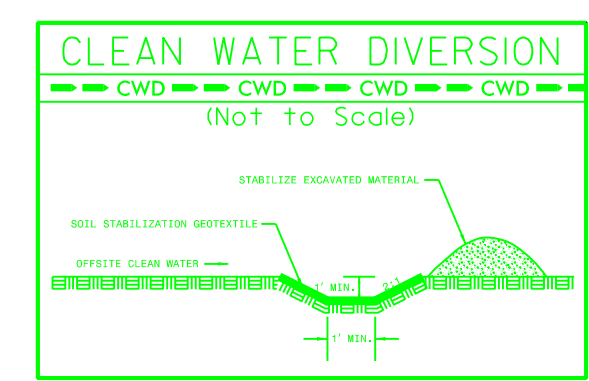


**-L\_DET1-**

PI Sta 11+93.13	PI Sta 14+78.25
$\Delta = 26^{\circ} 02' 45.8" (LT)$	$\Delta = 13^{\circ} 30' 33.5" (RT)$
D = 6' 51' 57.2"	D = 6' 51' 57.2"
L = 379.36'	L = 196.76'
T = 193.13'	T = 98.90'
R = 835.00'	R = 835.00'
SE=0.06	SE=0.06
RO = 140	RO = 140
DS = 50 MPH	DS = 50 MPH

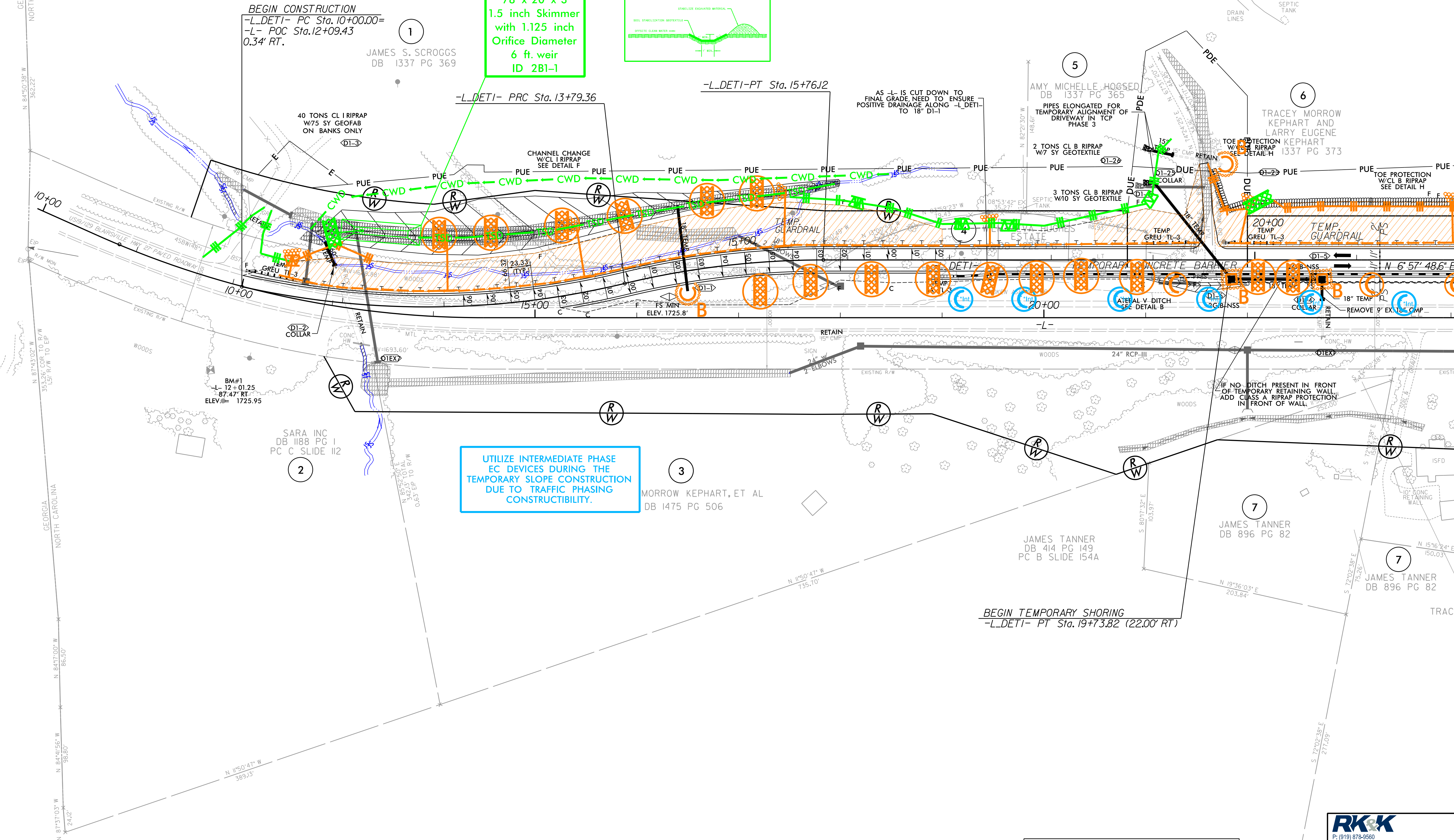
**FINAL PHASE  
EROSION CONTROL FOR  
CONSTRUCTION SHEET 2B-1EC-4**

**DO NOT INSTALL EROSION  
CONTROL DEVICES IN  
JURISDICTIONAL STREAMS/FLOW**

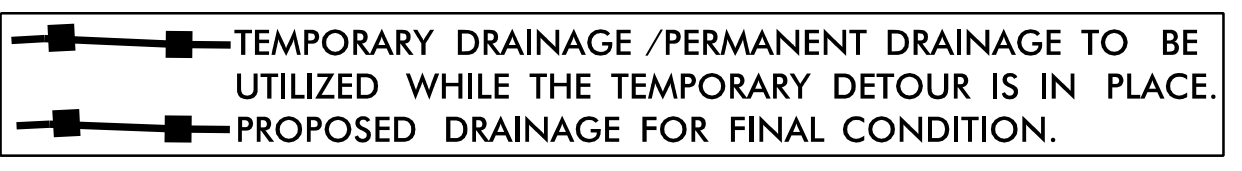


**78 x 20 x 3  
1.5 inch Skimmer  
with 1.125 inch  
Orifice Diameter  
6 ft. weir  
ID 2B1-1**

**UTILIZE INTERMEDIATE PHASE  
EC DEVICES DURING THE  
TEMPORARY SLOPE CONSTRUCTION  
DUE TO TRAFFIC PHASING  
CONSTRUCTIBILITY.**



**NOTES:**  
ALL DRIVES ARE 16' WIDE WITH 10' RADII UNLESS OTHERWISE NOTED.  
ALL DETOURS WILL BE REMOVED.



**FOR RW AND EASEMENT STATIONS/OFFSETS  
SEE SHTS. 4 & 5**  
**FOR DITCH DETAILS SEE SHTS. 2D-1 & 2D-2  
FOR -L\_DET1- PROFILE SEE SHT. 38  
FOR TRAFFIC CONTROL PLANS SEE SHTS. TMP-1 THRU TMP-56**

**RKK**  
P: (919) 878-9560  
8601 Six Forks Road, Forum 1, Suite 700  
Raleigh, North Carolina 27615-3960  
NC License No. F-0112  
www.rkk.com  
Engineers | Construction Managers | Planners | Scientists  
Responsive People | Creative Solutions

MATCHLINE -L\_DET1- STA. 22 + 00 SEE SHEET 2B-2

R:\18\2023\RA\Highways\ECAD\PSH\Erosion\_Control\R5861\_EC\_dsn\_DET1\_L\_psh2B-11.dgn 8/17/2023