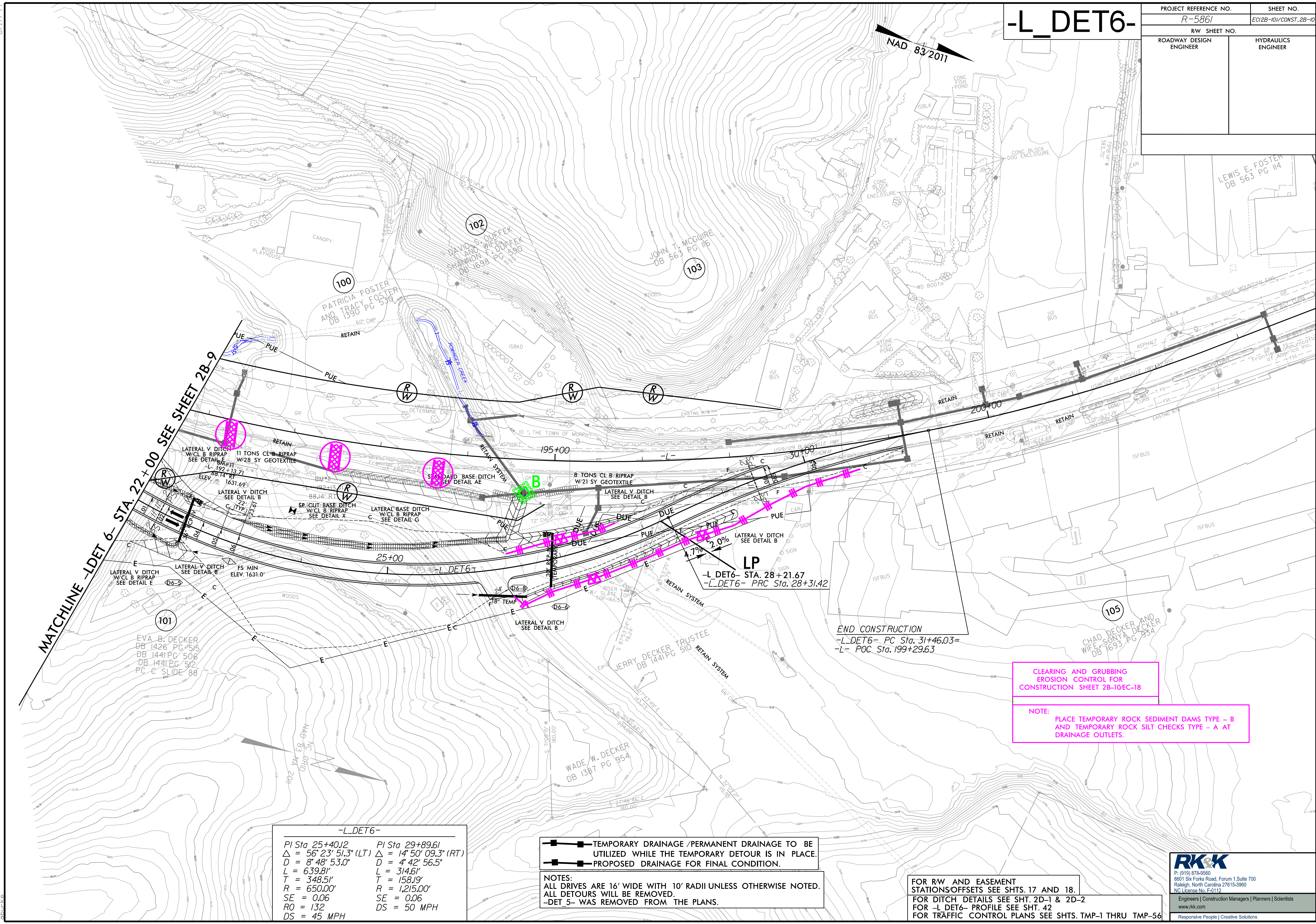


# -L\_DET6-

PROJECT REFERENCE NO. R-5861	SHEET NO. EC12B-10/CONST.2B-10
RW SHEET NO.	
ROADWAY DESIGN ENGINEER	HYDRAULICS ENGINEER

LEWIS E. FOSTER  
DB 563 PG 114

CHAD DECKER AND  
WIFE SONYA DECKER  
DB 7693 PG 954



MATCHLINE -LDET6- STA. 22+00 SEE SHEET 2B-9

END CONSTRUCTION  
-L\_DET6- PC Sta. 31+46.03=  
-L- POC Sta. 199+29.63

CLEARING AND GRUBBING  
EROSION CONTROL FOR  
CONSTRUCTION SHEET 2B-10EC-18

NOTE:  
PLACE TEMPORARY ROCK SEDIMENT DAMS TYPE - B  
AND TEMPORARY ROCK SILT CHECKS TYPE - A AT  
DRAINAGE OUTLETS.

-L\_DET6-

PI Sta 25+40J2	PI Sta 29+89.61
$\Delta = 56^{\circ} 23' 51.3" (LT)$	$\Delta = 14^{\circ} 50' 09.3" (RT)$
D = 8' 48" 53.0"	D = 4' 42" 56.5"
L = 639.81'	L = 314.61'
T = 348.51'	T = 158.19'
R = 650.00'	R = 1,215.00'
SE = 0.06	SE = 0.06
RO = 132	DS = 50 MPH
DS = 45 MPH	

- TEMPORARY DRAINAGE /PERMANENT DRAINAGE TO BE UTILIZED WHILE THE TEMPORARY DETOUR IS IN PLACE.
- PROPOSED DRAINAGE FOR FINAL CONDITION.

NOTES:  
ALL DRIVES ARE 16' WIDE WITH 10' RADII UNLESS OTHERWISE NOTED.  
ALL DETOURS WILL BE REMOVED.  
-DET 5- WAS REMOVED FROM THE PLANS.

FOR RW AND EASEMENT STATIONS/OFFSETS SEE SHTS. 17 AND 18.  
FOR DITCH DETAILS SEE SHT. 2D-1 & 2D-2  
FOR -L\_DET6- PROFILE SEE SHT. 42  
FOR TRAFFIC CONTROL PLANS SEE SHTS. TMP-1 THRU TMP-56

**RKK**  
P: (919) 878-9560  
8601 Six Forks Road, Forum 1, Suite 700  
Raleigh, North Carolina 27615-3960  
NC License No. F-0112  
www.rkk.com  
Responsive People | Creative Solutions

8/17/99  
 R:\Highways\Projects\PSH\Erosion\_Control\NR5861\_EC\_dan\_DET\_6\_psh2B-10.dgn  
 8/18/2023  
 R:\Highways\Projects\PSH\Erosion\_Control\NR5861\_EC\_dan\_DET\_6\_psh2B-10.dgn