

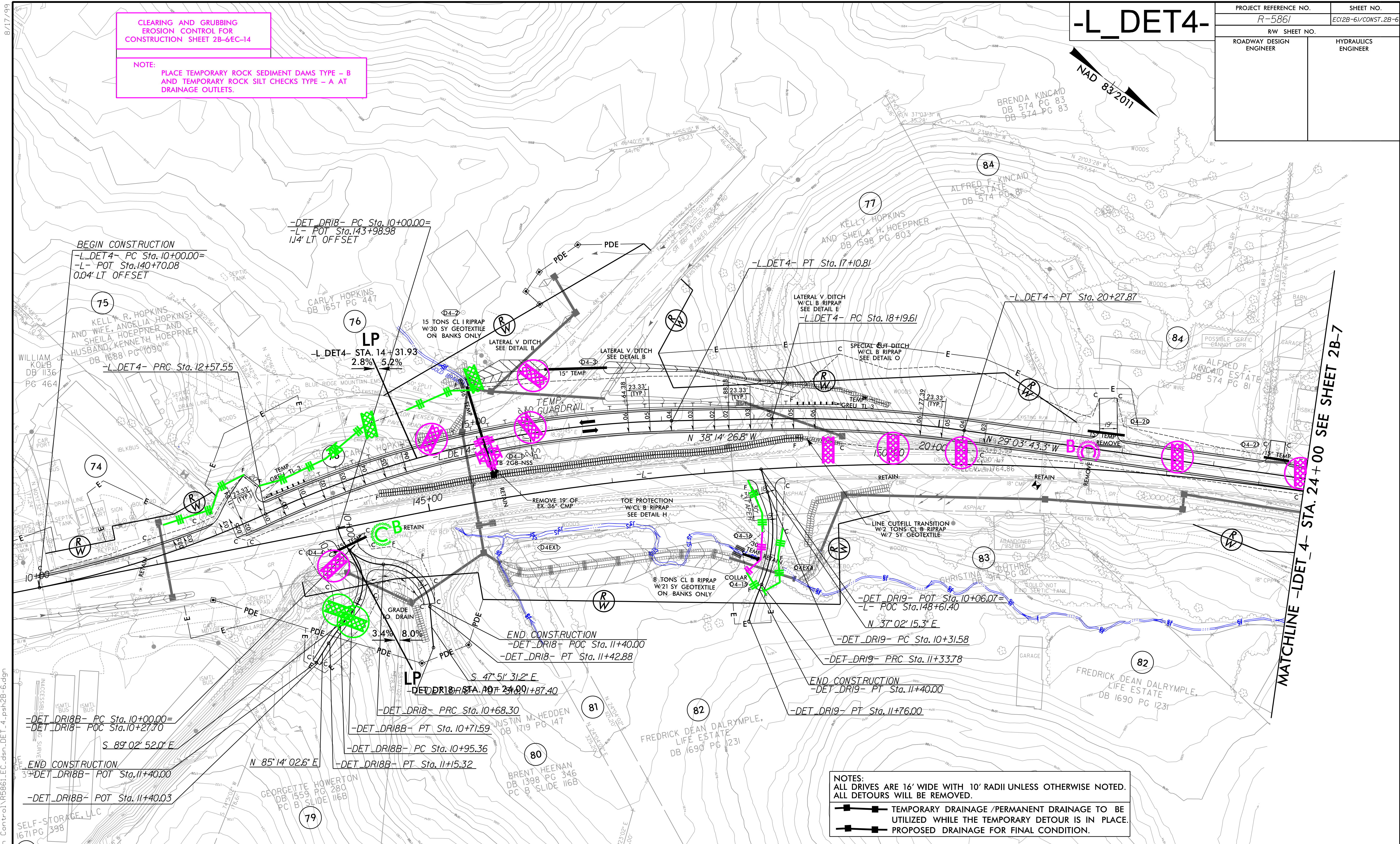
CLEARING AND GRUBBING  
EROSION CONTROL FOR  
CONSTRUCTION SHEET 2B-6C-14

NOTE:  
PLACE TEMPORARY ROCK SEDIMENT DAMS TYPE - B  
AND TEMPORARY ROCK SILT CHECKS TYPE - A AT  
DRAINAGE OUTLETS.

# -L\_DET4-



PROJECT REFERENCE NO.	SHEET NO.
R-5861	EC12B-61/CONST.2B-6
RW SHEET NO.	
ROADWAY DESIGN ENGINEER	HYDRAULICS ENGINEER



MATCHLINE -LDET\_4- STA. 24+00 SEE SHEET 2B-7

NOTES:  
ALL DRIVES ARE 16' WIDE WITH 10' RADII UNLESS OTHERWISE NOTED.  
ALL DETOURS WILL BE REMOVED.  
—■—■— TEMPORARY DRAINAGE /PERMANENT DRAINAGE TO BE UTILIZED WHILE THE TEMPORARY DETOUR IS IN PLACE.  
—■—■— PROPOSED DRAINAGE FOR FINAL CONDITION.

-L_DET4-			-DET_DR18-			-DET_DR18B-			-DET_DR19-		
PI Sta 11+29.41	PI Sta 14+87.52	PI Sta 19+23.97	PI Sta 10+40.68	PI Sta 11+14.49	PI Sta 10+43.49	PI Sta 11+05.35	PI Sta 10+84.76	PI Sta 11+54.93			
$\Delta = 15' 25' 10.6''$ (LT)	$\Delta = 23' 37' 01.0''$ (RT)	$\Delta = 9' 10' 43.4''$ (RT)	$\Delta = 78' 15' 52.3''$ (LT)	$\Delta = 85' 28' 02.8''$ (RT)	$\Delta = 82' 02' 03.8''$ (RT)	$\Delta = 5' 43' 05.5''$ (LT)	$\Delta = 39' 02' 18.7''$ (RT)	$\Delta = 8' 03' 46.2''$ (LT)			
D = 5' 12' 37.8"	D = 5' 12' 37.8"	D = 4' 24' 26.5"	D = 114' 35' 29.6"	D = 114' 35' 29.6"	D = 114' 35' 29.6"	D = 28' 38' 52.4"	D = 38' 11' 49.9"	D = 19' 05' 54.9"			
L = 257.55'	L = 453.26'	L = 208.26'	L = 68.30'	L = 74.58'	L = 71.59'	L = 19.96'	L = 102.20'	L = 42.22'			
T = 129.41'	T = 229.97'	T = 104.35'	T = 40.68'	T = 46.19'	T = 43.49'	T = 9.99'	T = 53.77'	T = 21.4'			
R = 1,100.00'	R = 1,100.00'	R = 1,300.00'	R = 50.00'	R = 50.00'	R = 50.00'	R = 200.00'	R = 150.00'	R = 300.00'			
	SE = 0.06	SE = 0.06									
	RO = 140	RO = 140									
	DS = 50 MPH	DS = 50 MPH									

FOR RW AND EASEMENT STATIONS/OFFSETS SEE SHTS. 14 AND 15.  
FOR DITCH DETAILS SEE SHT. 2D-1 & 2D-2  
FOR -L\_DET4- PROFILE SEE SHT. 40  
FOR -DET\_DR18- PROFILE SEE SHT. 43  
FOR -DET\_DR18B- PROFILE SEE SHT. 43  
FOR -DET\_DR19- PROFILE SEE SHT. 43  
FOR TRAFFIC CONTROL PLANS SEE SHTS. TMP-1 THRU TMP-56

Engineers | Construction Managers | Planners | Scientists  
www.rkk.com  
Responsive People | Creative Solutions

8/17/2023  
R:\Highways\Projects\2023\Projects\2B-6\EC.dwg  
Control\PSH-Erosion Control\RS861\_EC.dwg  
L\_DET\_4\_psh2B-6.dgn