

8.17.799
 R:\18\2023\RA\Highways\CAAD\PSH\Erosion_Control\RS861_EC_det1_1_psh2B-1.dgn
 8/18/2023
 RA\Highways\CAAD\PSH\Erosion_Control\RS861_EC_det1_1_psh2B-1.dgn

-L_DET1-

PI Sta 11+93.13	PI Sta 14+78.25
$\Delta = 26^{\circ} 02' 45.8"$ (LT)	$\Delta = 13^{\circ} 30' 33.5"$ (RT)
D = 6' 51' 57.2"	D = 6' 51' 57.2"
L = 379.36'	L = 196.76'
T = 193.13'	T = 98.90'
R = 835.00'	R = 835.00'
SE = 0.06	SE = 0.06
RO = 140	RO = 140
DS = 50 MPH	DS = 50 MPH

D = 6' 09' 39.0"	D = 7' 01' 48.6"	D = 21' 37' 15.8"	D = 52' 05' 13.5"
L = 391.12'	L = 86.96'	L = 60.53'	L = 55.48'
T = 198.49'	T = 43.52'	T = 30.40'	T = 28.35'
R = 930.00'	R = 815.00'	R = 265.00'	R = 110.00'
SE = 0.06	SE = 0.02	SE = 0.02	SE = 0.02
RO = 150	DS = 15 MPH	DS = 15 MPH	DS = 15 MPH

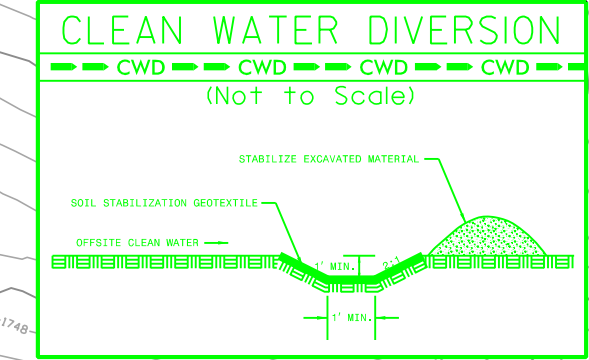
**CLEARING AND GRUBBING
 EROSION CONTROL FOR
 CONSTRUCTION SHEET 2B-1EC-4**

NOTE:
 PLACE TEMPORARY ROCK SEDIMENT DAMS TYPE - B
 AND TEMPORARY ROCK SILT CHECKS TYPE - A AT
 DRAINAGE OUTLETS.

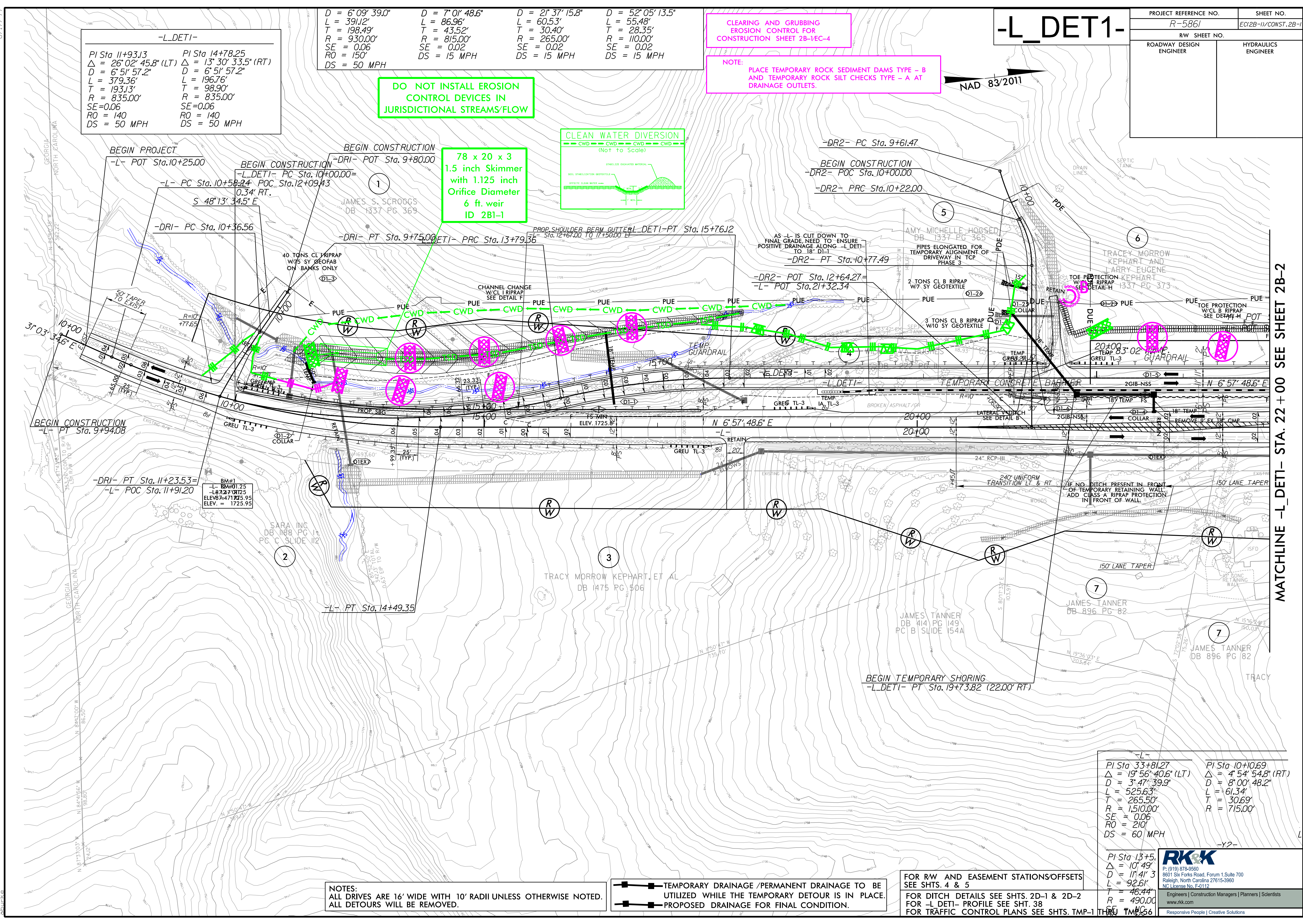
-L_DET1-

PROJECT REFERENCE NO. R-5861	SHEET NO. EC12B-11/CONST.2B-1
RW SHEET NO.	
ROADWAY DESIGN ENGINEER	HYDRAULICS ENGINEER

**DO NOT INSTALL EROSION
 CONTROL DEVICES IN
 JURISDICTIONAL STREAMS/FLOW**



**78 x 20 x 3
 1.5 inch Skimmer
 with 1.125 inch
 Orifice Diameter
 6 ft. weir
 ID 281-1**



BEGIN PROJECT
-L- POT Sta. 10+25.00

BEGIN CONSTRUCTION
-DRI- POT Sta. 9+80.00

-DR2- PC Sta. 9+61.47

BEGIN CONSTRUCTION
-DR2- POC Sta. 10+00.00

-DR2- PRC Sta. 10+22.00

PROP SHOULDER BERM CUTTER
-L_DET1- PT Sta. 15+76.12

AS -L- IS CUT DOWN TO
FINAL GRADE, NEED TO ENSURE
POSITIVE DRAINAGE ALONG -L_DET1-
TO 18' DI-1

-DR2- PT Sta. 10+77.49

-DR2- POT Sta. 12+64.27

-L- POT Sta. 21+32.34

BEGIN CONSTRUCTION
-L- PT Sta. 9+94.08

-DRI- PT Sta. 11+23.53

-L- POC Sta. 11+91.20

-L- PT Sta. 14+49.35

BEGIN TEMPORARY SHORING
-L_DET1- PT Sta. 19+73.82 (22.00' RT)

PI Sta 33+81.27	PI Sta 10+10.69
$\Delta = 19^{\circ} 56' 40.6"$ (LT)	$\Delta = 4^{\circ} 54' 54.8"$ (RT)
D = 3' 47' 39.9"	D = 8' 00' 48.2"
L = 525.63'	L = 61.34'
T = 265.50'	T = 30.69'
R = 1510.00'	R = 715.00'
SE = 0.06	
RO = 210	
DS = 60 MPH	

RK&K
 P: (919) 878-9560
 8601 Six Forks Road, Forum 1, Suite 700
 Raleigh, North Carolina 27615-3960
 NC License No. F-0112
 Engineers | Construction Managers | Planners | Scientists
 www.rkk.com
 Responsive People | Creative Solutions

NOTES:
 ALL DRIVES ARE 16' WIDE WITH 10' RADII UNLESS OTHERWISE NOTED.
 ALL DETOURS WILL BE REMOVED.

- TEMPORARY DRAINAGE /PERMANENT DRAINAGE TO BE UTILIZED WHILE THE TEMPORARY DETOUR IS IN PLACE.
- PROPOSED DRAINAGE FOR FINAL CONDITION.

FOR RW AND EASEMENT STATIONS/OFFSETS
 SEE SHTS. 4 & 5
 FOR DITCH DETAILS SEE SHTS. 2D-1 & 2D-2
 FOR -L_DET1- PROFILE SEE SHT. 38
 FOR TRAFFIC CONTROL PLANS SEE SHTS. TMP-1 THRU TMP-56

MATCHLINE -L_DET1- STA. 22 + 00 SEE SHEET 2B-2