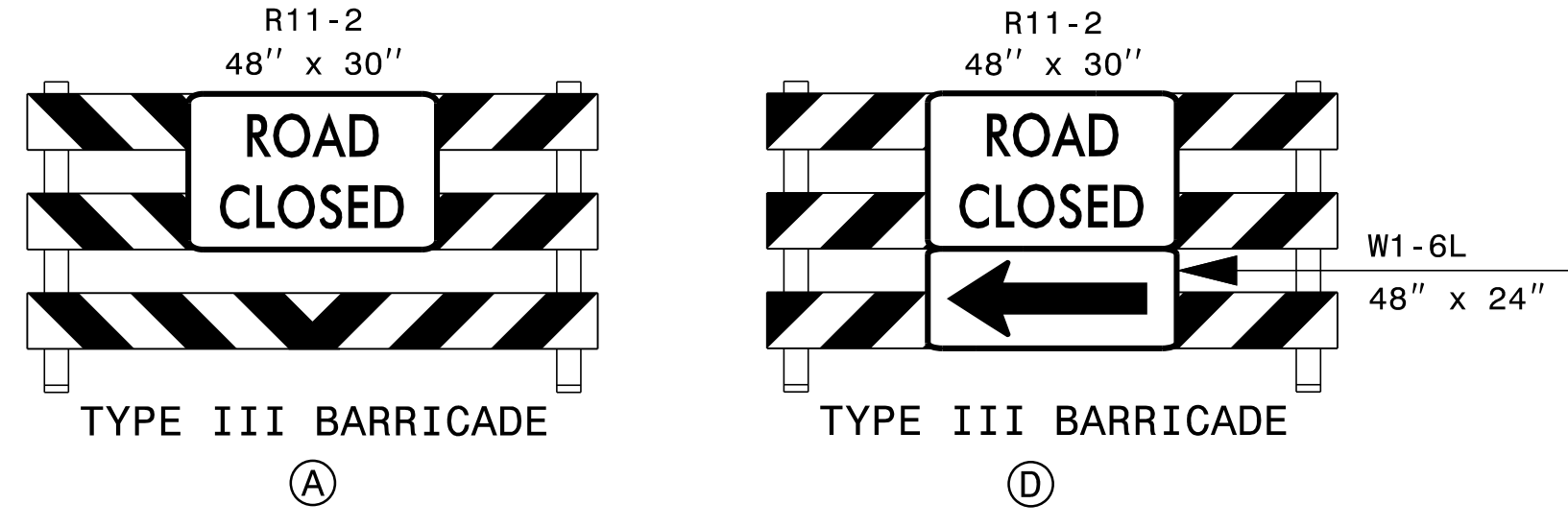
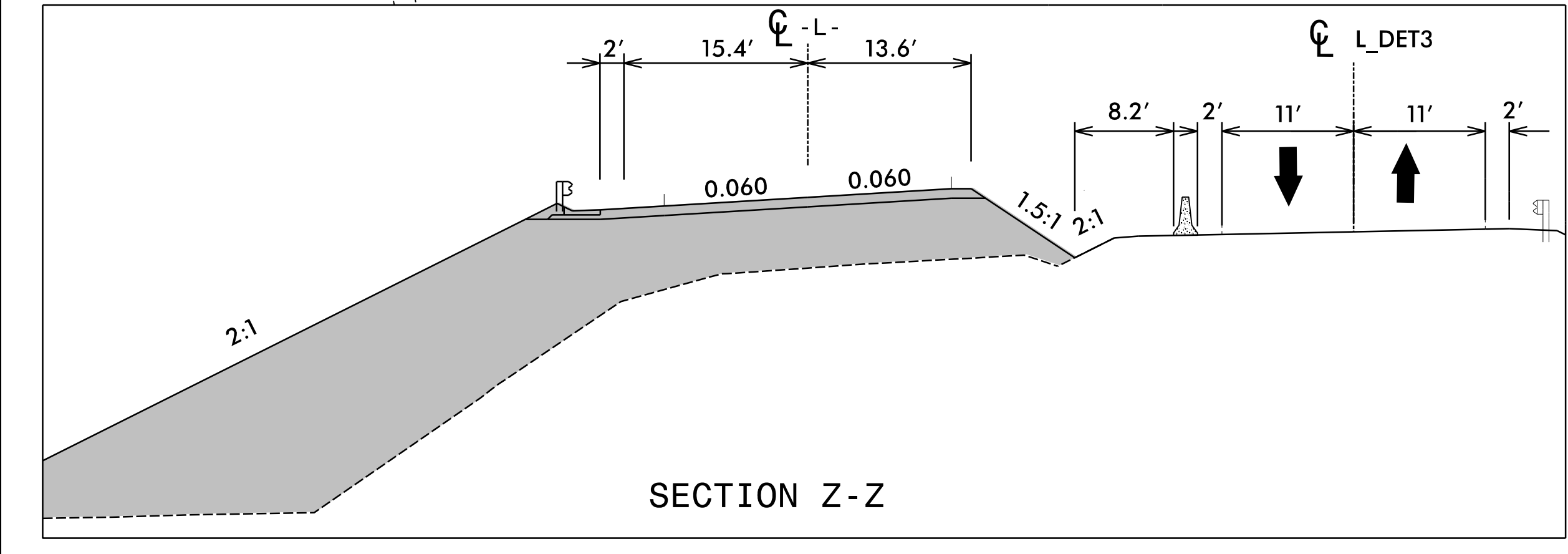


SHORING I.D.	BEGIN/OFFSET	END/OFFSET	ESTIMATED AVERAGE HEIGHT (ft)	ESTIMATED MAXIMUM HEIGHT (ft)
5	-L_DET3- STA 15+29 +/- 20.0' LT	-L_DET3- STA 16+60 +/- 20.0' LT	27.6	27.6
6	-L- STA 126+95 +/- 20.0' RT	-L- STA 128+35 +/- 20.0' RT	30.8	30.8



10/18/2023
R5861.Lc_Tmp27.dgn
Kb/sby

RK&K
 P: (919) 878-9560
 8601 Six Forks Road, Forum 1, Suite 700
 Raleigh, North Carolina 27615-3960
 NC License No. F-0112
 Engineers | Construction Managers | Planners | Scientists
 www.rkk.com
 Responsive People | Creative Solutions

APPROVED: *Kevin B. Bly*
 DATE: 10/18/2023
 SEAL
 NORTH CAROLINA PROFESSIONAL ENGINEER
 SEAL 21047
 KEVIN W. BLY
 ENGINEER



PHASE II - STEP 1
 PAVEMENT MARKINGS
 PHASE II - STEP 2