

5/28/23

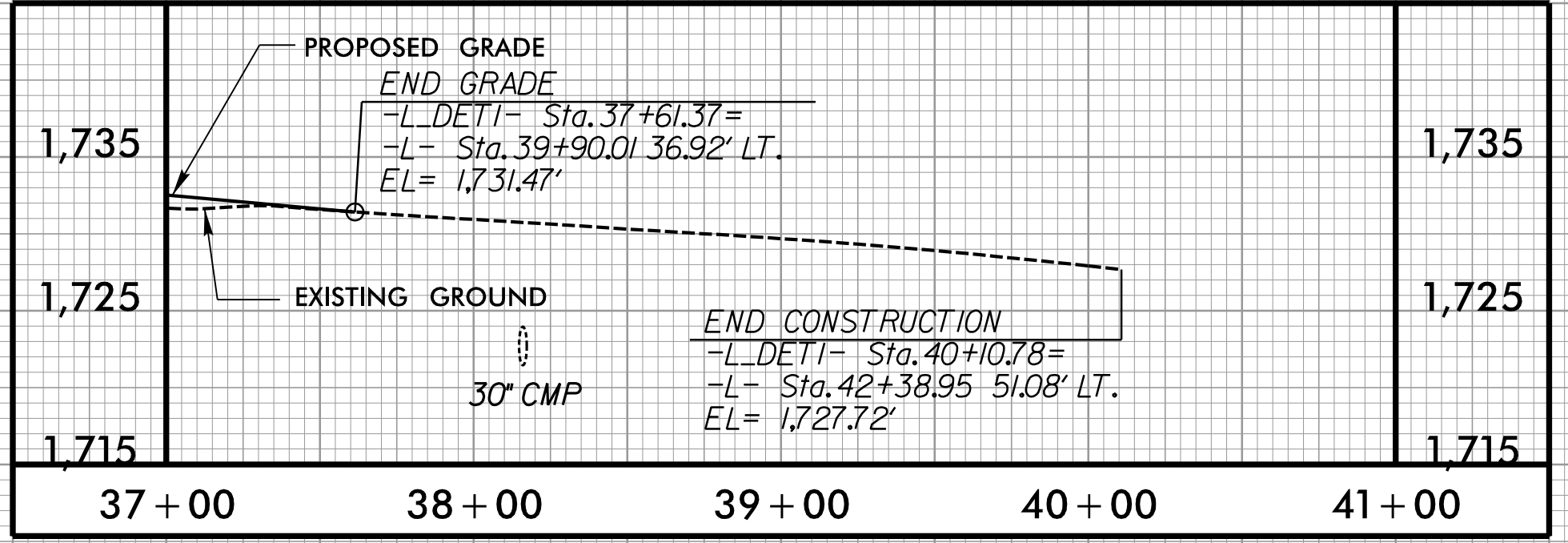
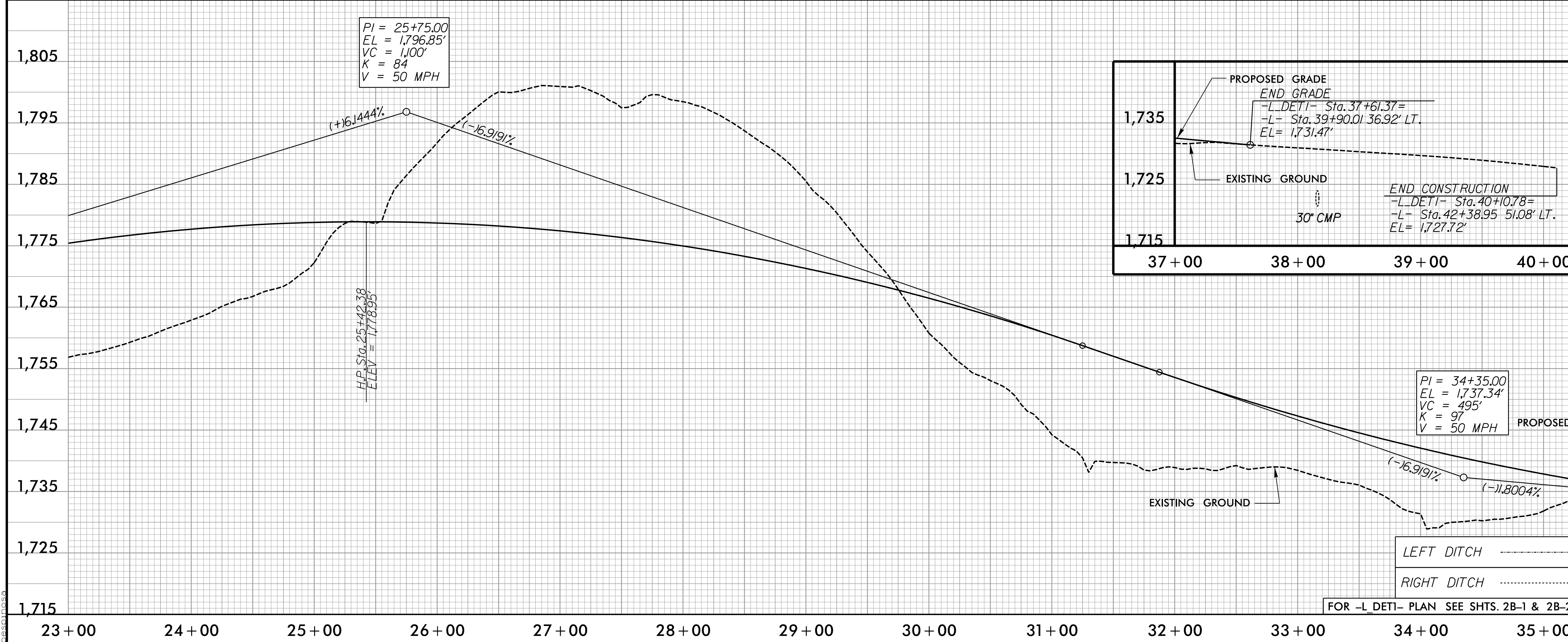
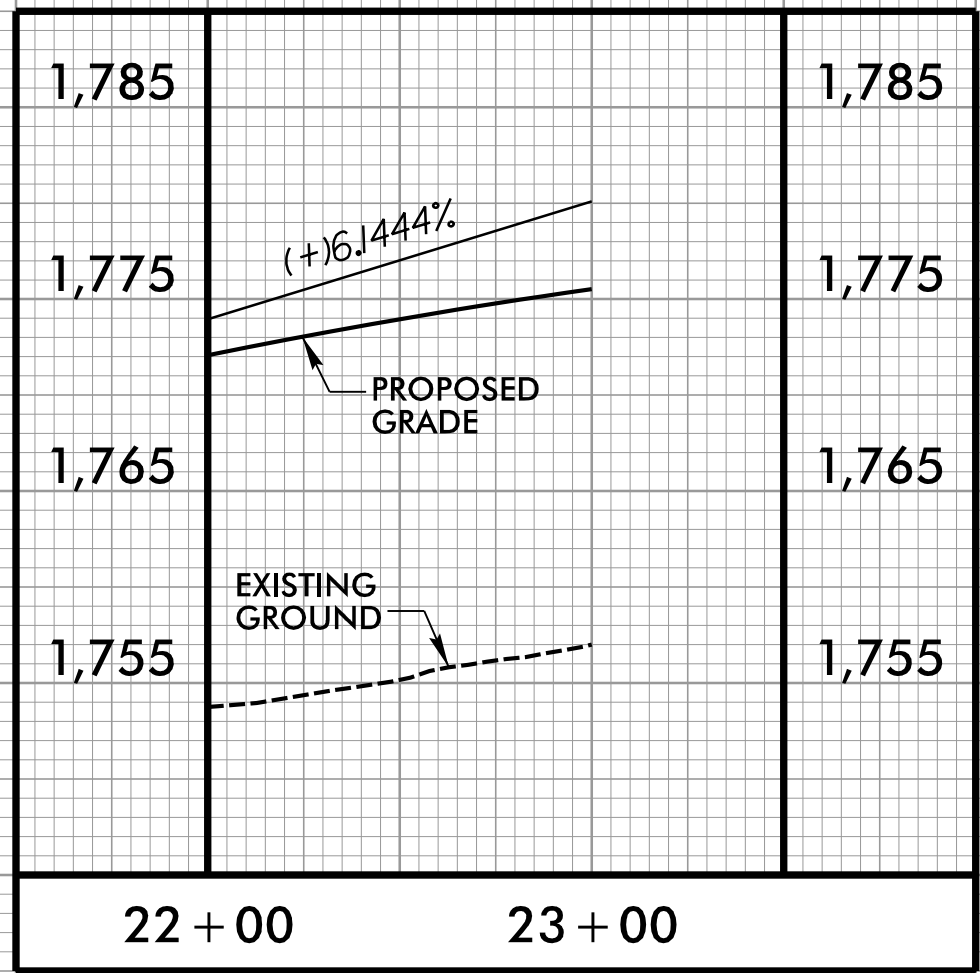
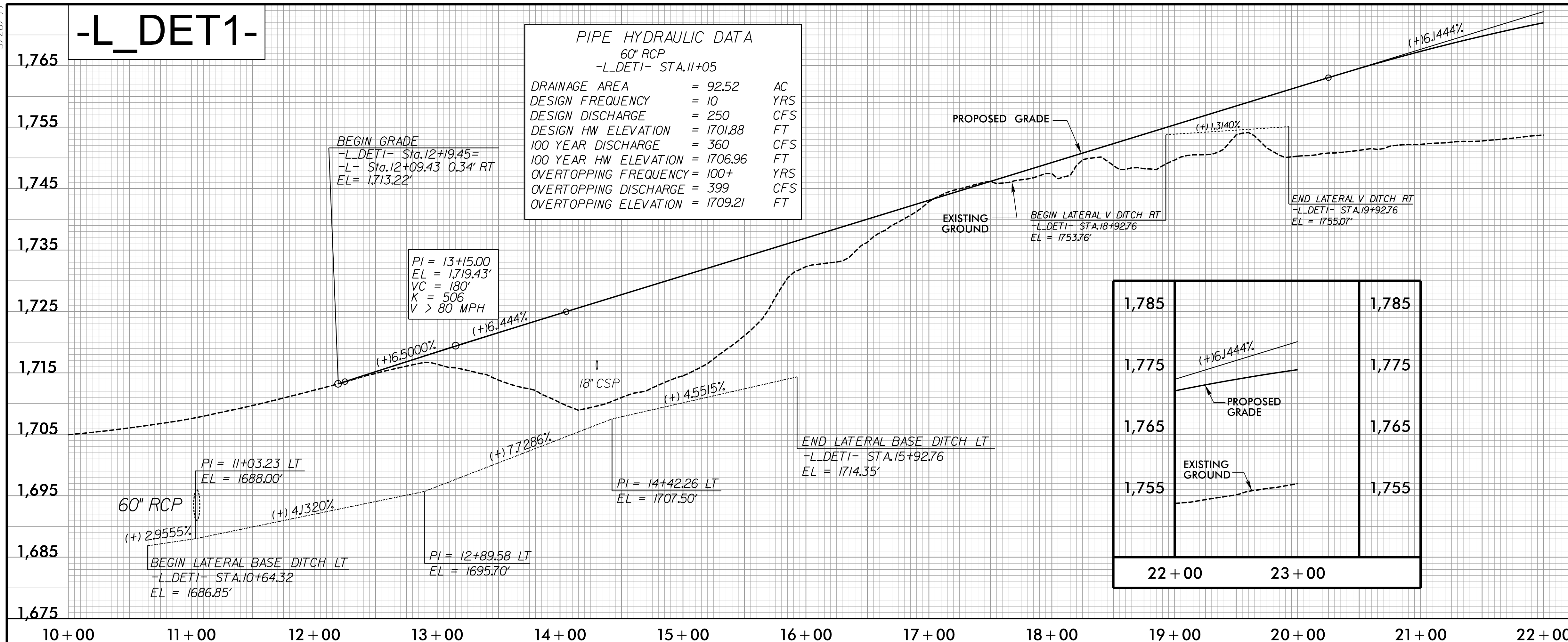
-L_DET1-

PIPE HYDRAULIC DATA
60" RCP
-L_DET1- STA.11+05

DRAINAGE AREA	= 92.52	AC
DESIGN FREQUENCY	= 10	YRS
DESIGN DISCHARGE	= 250	CFS
DESIGN HW ELEVATION	= 1701.88	FT
100 YEAR DISCHARGE	= 360	CFS
100 YEAR HW ELEVATION	= 1706.96	FT
OVERTOPPING FREQUENCY	= 100+	YRS
OVERTOPPING DISCHARGE	= 399	CFS
OVERTOPPING ELEVATION	= 1709.21	FT

PROJECT REFERENCE NO. R-5861	SHEET NO. 38
ROADWAY DESIGN ENGINEER SPAJINUS 10/31/2023	HYDRAULICS ENGINEER ALEXIS S. BURKE 10/30/2023

DOCUMENT NOT CONSIDERED FINAL UNLESS ALL SIGNATURES COMPLETED



-L_DET1-

RK&K
P: (919) 978-9560
8601 Six Forks Road, Forum 1, Suite 700
Raleigh, North Carolina 27615-3960
NC License No. F-0112
Engineers | Construction Managers | Planners | Scientists
www.rk.com

FOR -L_DET1- PLAN SEE SHTS. 2B-1 & 2B-2

10/31/2023
R:\62063\Proj\5861-Rdy-pf138.dgn
bss01023