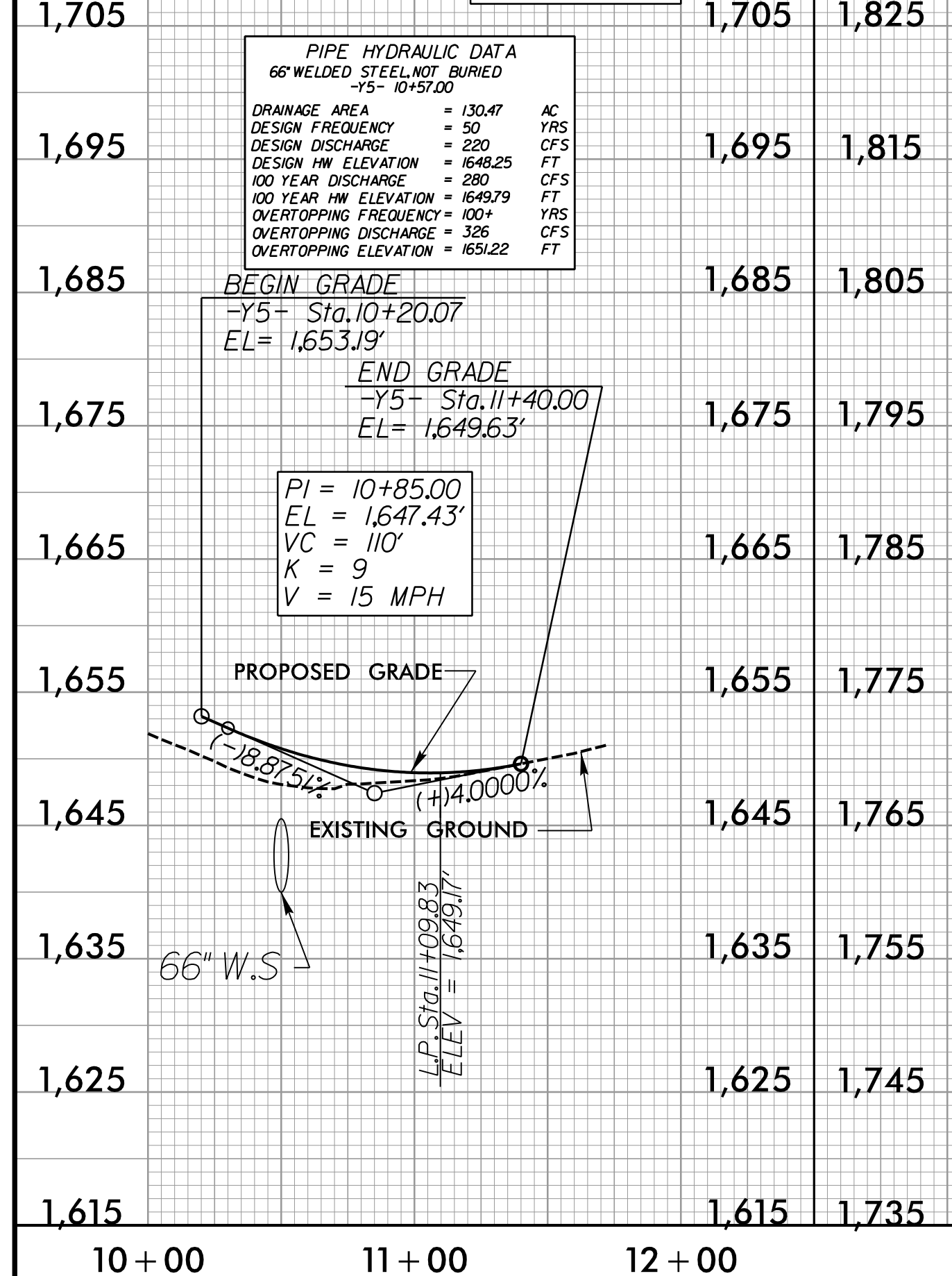


5/28/99

# -Y5-



**BEGIN SP. CUT DITCH LT**  
-Y6- STA. 11+00.00  
EL = 1,822.97'

**BEGIN GRADE**  
-Y6- Sta. 11+30.00  
EL = 1,819.98'

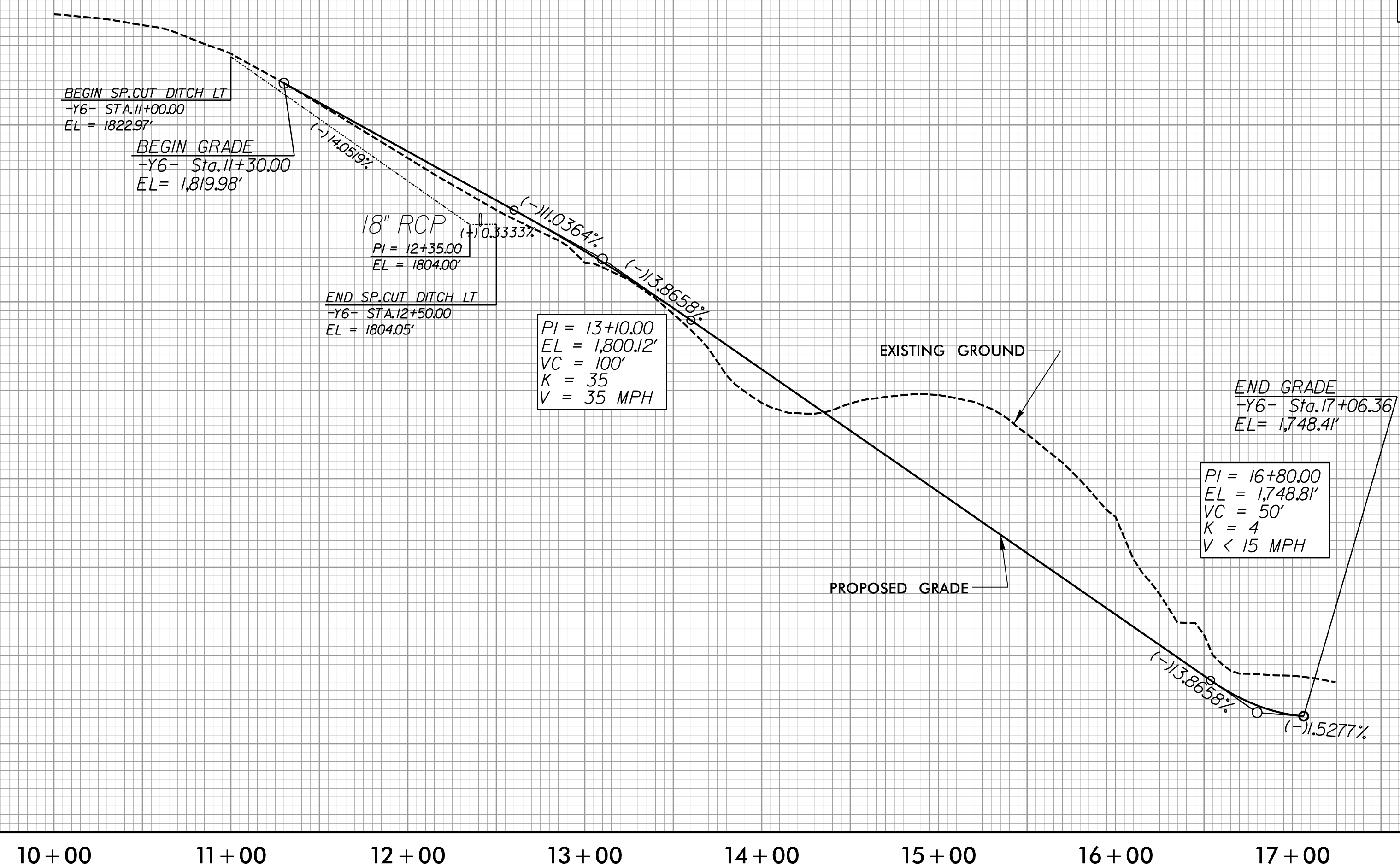
18" RCP  
PI = 12+35.00  
EL = 1,804.00'

**END SP. CUT DITCH LT**  
-Y6- STA. 12+50.00  
EL = 1,804.05'

PI = 13+10.00  
EL = 1,800.12'  
VC = 100'  
K = 35  
V = 35 MPH

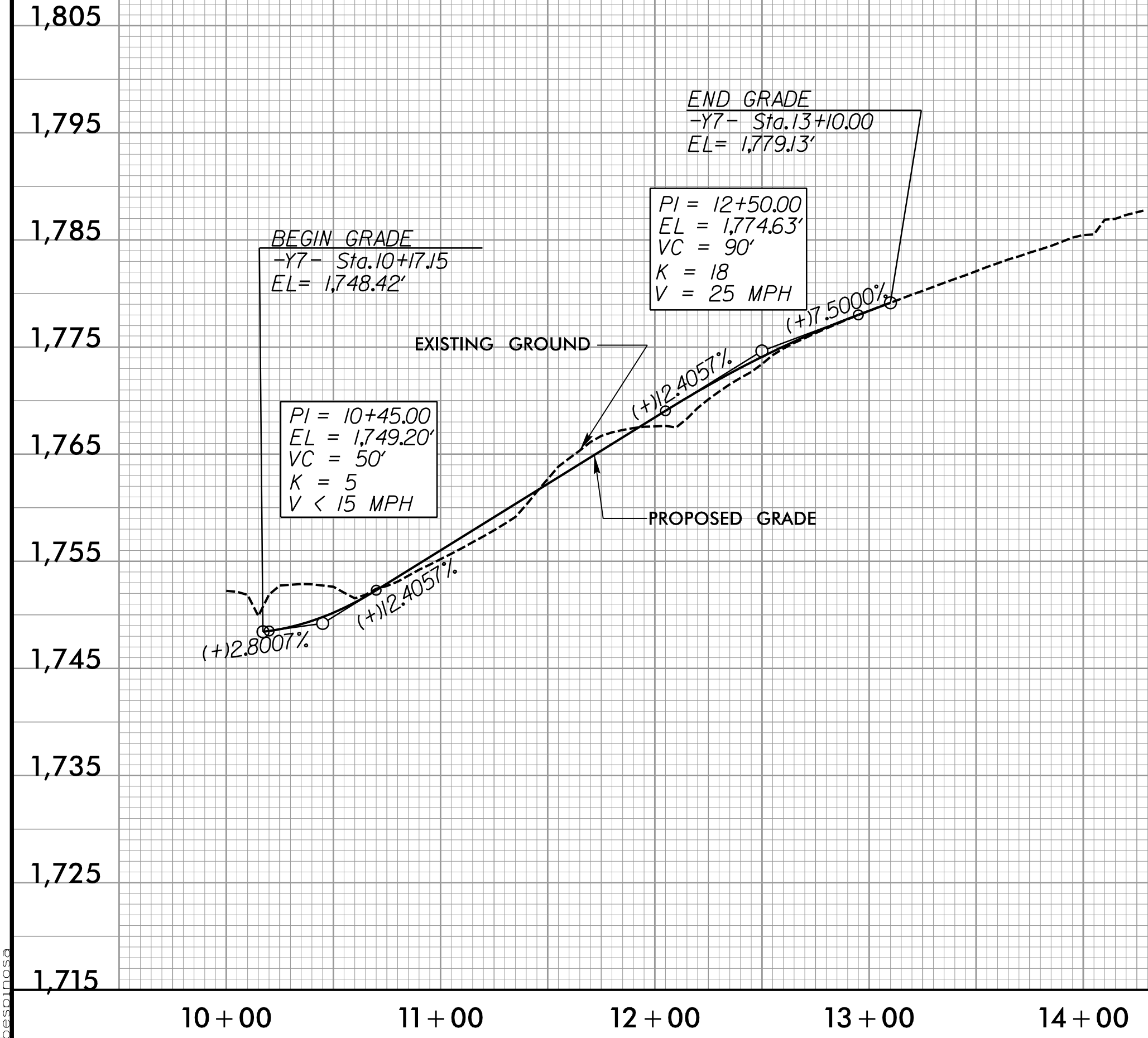
**END GRADE**  
-Y6- Sta. 17+06.36  
EL = 1,748.41'

PI = 16+80.00  
EL = 1,748.81'  
VC = 50'  
K = 4  
V < 15 MPH



10+00 11+00 12+00 13+00 14+00 15+00 16+00 17+00 18+00

# -Y7-



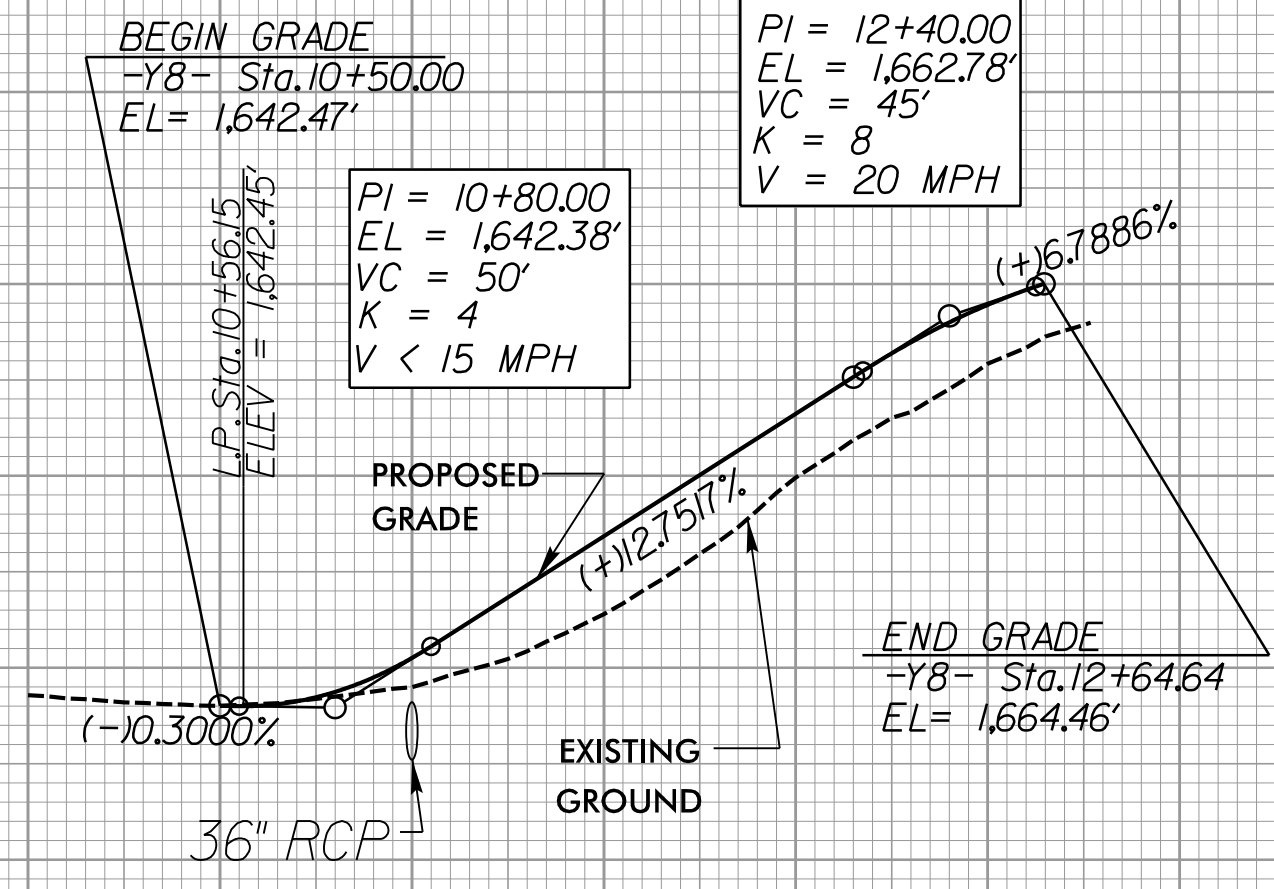
**PIPE HYDRAULIC DATA**  
36" RCP, BURED 06'  
-Y8- STA. 11+00

DRAINAGE AREA	= 5.02	AC
DESIGN FREQUENCY	= 25	YRS
DESIGN DISCHARGE	= 18.5	CFS
DESIGN HW ELEVATION	= 1641.99	FT
100 YEAR DISCHARGE	= 23	CFS
100 YEAR HW ELEVATION	= 1642.26	FT
OVERTOPPING FREQUENCY	= 100+	YRS
OVERTOPPING DISCHARGE	= 26	CFS
OVERTOPPING ELEVATION	= 1642.41	FT

**BEGIN GRADE**  
-Y8- Sta. 10+50.00  
EL = 1,642.47'

PI = 12+40.00  
EL = 1,662.78'  
VC = 45'  
K = 8  
V = 20 MPH

PI = 10+80.00  
EL = 1,642.38'  
VC = 50'  
K = 4  
V < 15 MPH



10+00 11+00 12+00 13+00 14+00 15+00 16+00 17+00 18+00

PROJECT REFERENCE NO. R-5861	SHEET NO. 31
ROADWAY DESIGN ENGINEER BRANDON J. MANNING 10/31/2023	HYDRAULICS ENGINEER ALEXIS S. BURKE 10/30/2023
DOCUMENT NOT CONSIDERED FINAL UNLESS ALL SIGNATURES COMPLETED	

**RK&K**  
P: (919) 978-9560  
8601 Six Forks Road, Forum 1, Suite 700  
Raleigh, North Carolina 27615-3960  
NC License No. F-0112  
Engineers | Construction Managers | Planners | Scientists  
www.rkk.com  
Responsive People | Creative Solutions

LEFT DITCH ..... FOR -Y5- PLAN SEE SHT. 9  
RIGHT DITCH ..... FOR -Y6- PLAN SEE SHT. 11  
FOR -Y7- PLAN SEE SHT. 11  
FOR -Y8- PLAN SEE SHT. 13

10/16/2023  
R:\6206\p\proj\5861\RDY-p\131.dgn