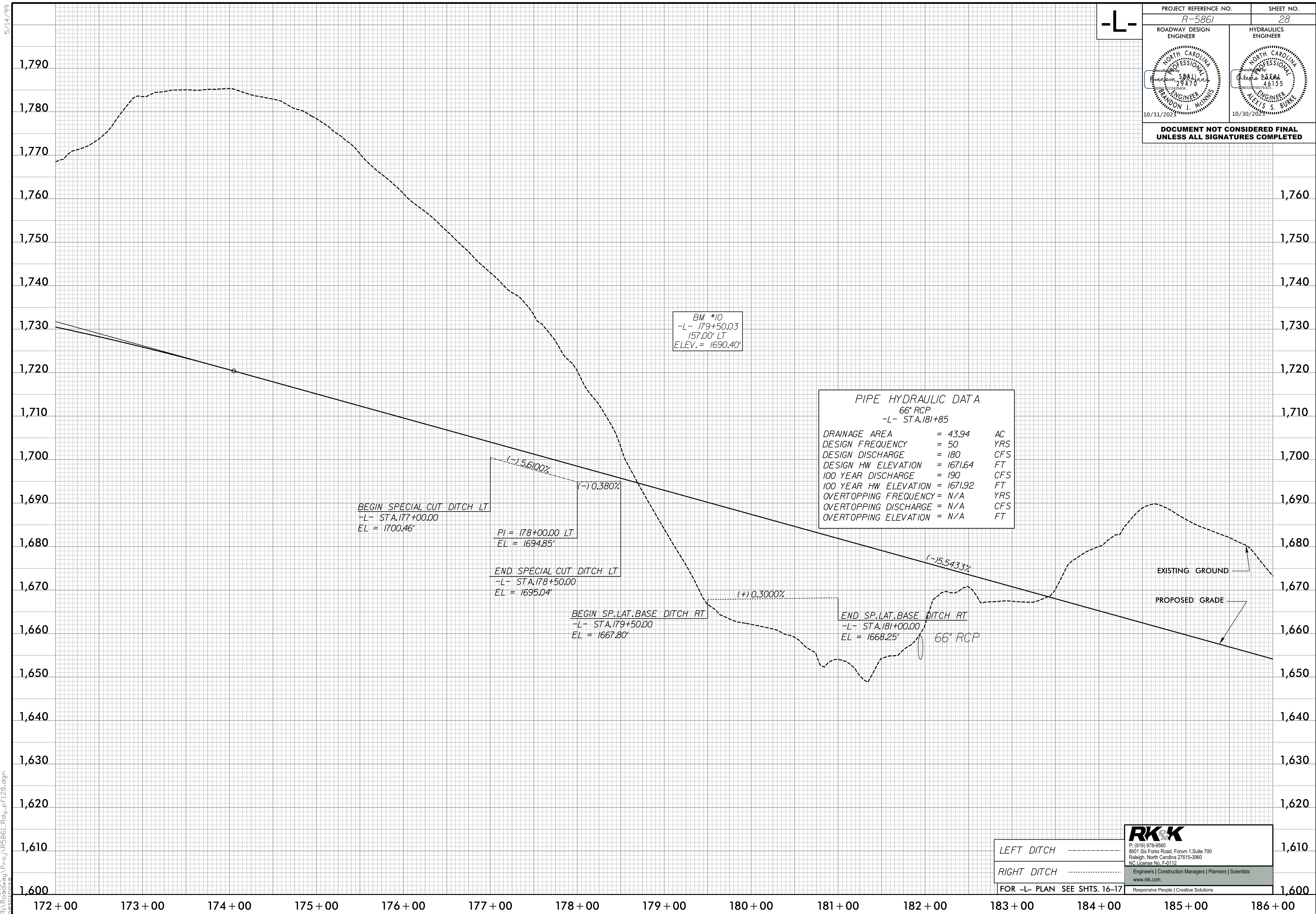


5/14/99

-L-

PROJECT REFERENCE NO. R-5861	SHEET NO. 28
ROADWAY DESIGN ENGINEER 	HYDRAULICS ENGINEER 

DOCUMENT NOT CONSIDERED FINAL UNLESS ALL SIGNATURES COMPLETED



BM #10  
-L- 179+50.03  
157.00' LT  
ELEV. = 1690.40'

PIPE HYDRAULIC DATA		
66" RCP		
-L- STA.181+85		
DRAINAGE AREA	= 43.94	AC
DESIGN FREQUENCY	= 50	YRS
DESIGN DISCHARGE	= 180	CFS
DESIGN HW ELEVATION	= 1671.64	FT
100 YEAR DISCHARGE	= 190	CFS
100 YEAR HW ELEVATION	= 1671.92	FT
OVERTOPPING FREQUENCY	= N/A	YRS
OVERTOPPING DISCHARGE	= N/A	CFS
OVERTOPPING ELEVATION	= N/A	FT

BEGIN SPECIAL CUT DITCH LT  
-L- STA.177+00.00  
EL = 1700.46'

(-) 5.6100%  
PI = 178+00.00 LT  
EL = 1694.85'

END SPECIAL CUT DITCH LT  
-L- STA.178+50.00  
EL = 1695.04'

BEGIN SP.LAT.BASE DITCH RT  
-L- STA.179+50.00  
EL = 1667.80'

(+) 0.3000%

END SP.LAT.BASE DITCH RT  
-L- STA.181+00.00  
EL = 1668.25'

(-) 5.5433%

66" RCP

EXISTING GROUND

PROPOSED GRADE

LEFT DITCH .....  
RIGHT DITCH .....  
FOR -L- PLAN SEE SHTS. 16-17

**RK&K**  
P: (919) 878-9560  
8601 Six Forks Road, Forum 1, Suite 700  
Raleigh, North Carolina 27615-3960  
NC License No. F-0112  
Engineers | Construction Managers | Planners | Scientists  
www.rkk.com  
Responsive People | Creative Solutions

I:\6\2023\RA\62023\RA\62023\Proj\5861\RD\pfl28.dgn