

5/28/24

-L-

PROJECT REFERENCE NO. R-5861	SHEET NO. 25
ROADWAY DESIGN ENGINEER 	HYDRAULICS ENGINEER

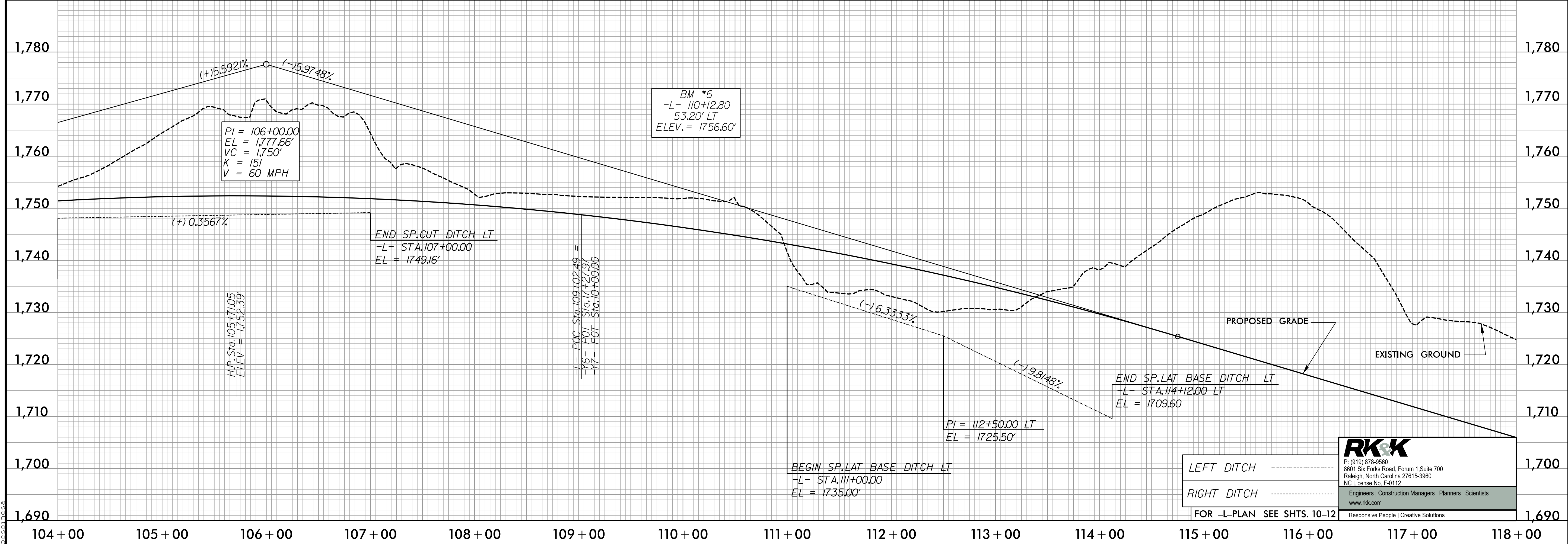
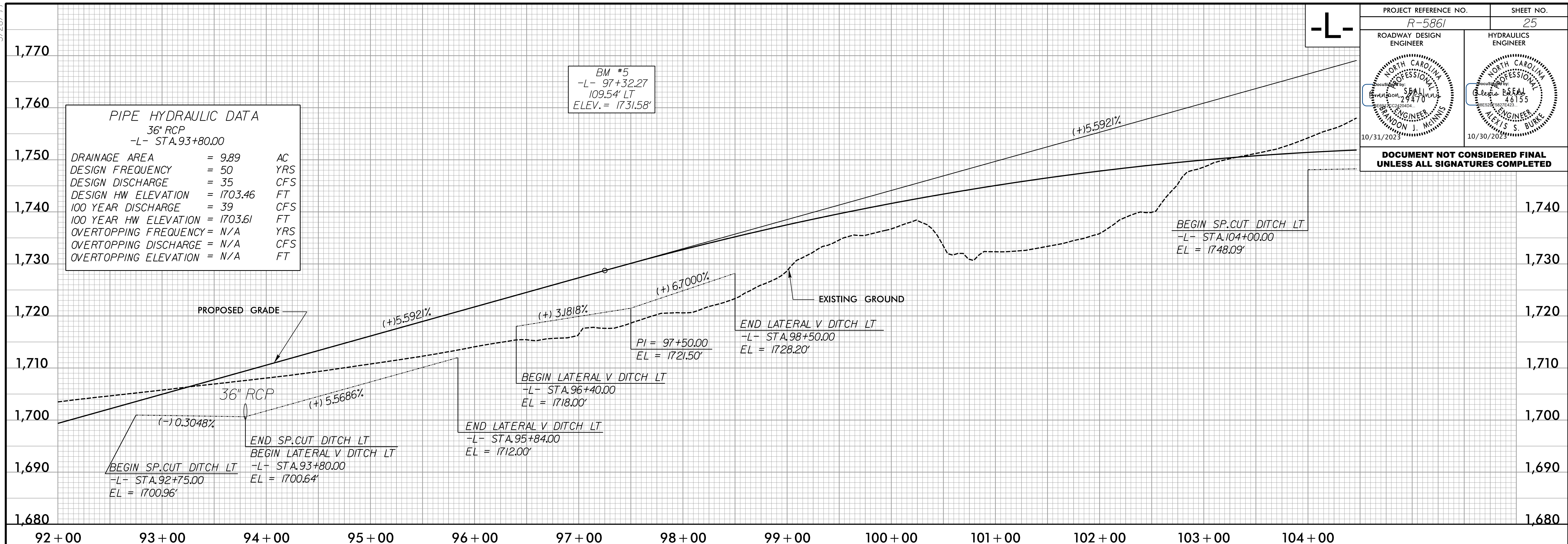
DOCUMENT NOT CONSIDERED FINAL UNLESS ALL SIGNATURES COMPLETED

PIPE HYDRAULIC DATA

36" RCP
-L- STA.93+80.00

DRAINAGE AREA	= 9.89	AC
DESIGN FREQUENCY	= 50	YRS
DESIGN DISCHARGE	= 35	CFS
DESIGN HW ELEVATION	= 1703.46	FT
100 YEAR DISCHARGE	= 39	CFS
100 YEAR HW ELEVATION	= 1703.61	FT
OVERTOPPING FREQUENCY	= N/A	YRS
OVERTOPPING DISCHARGE	= N/A	CFS
OVERTOPPING ELEVATION	= N/A	FT

BM #5
-L- 97+32.27
109.54' LT
ELEV. = 1731.58'



LEFT DITCH
RIGHT DITCH
FOR -L-PLAN SEE SHTS. 10-12

RK&K

P: (919) 978-9560
8601 Six Forks Road, Forum 1, Suite 700
Raleigh, North Carolina 27615-3960
NC License No. F-0112

Engineers | Construction Managers | Planners | Scientists
www.rkk.com
Responsive People | Creative Solutions

10/6/2023 10:16:06 AM P:\Projects\15861-Rd\p125.dgn