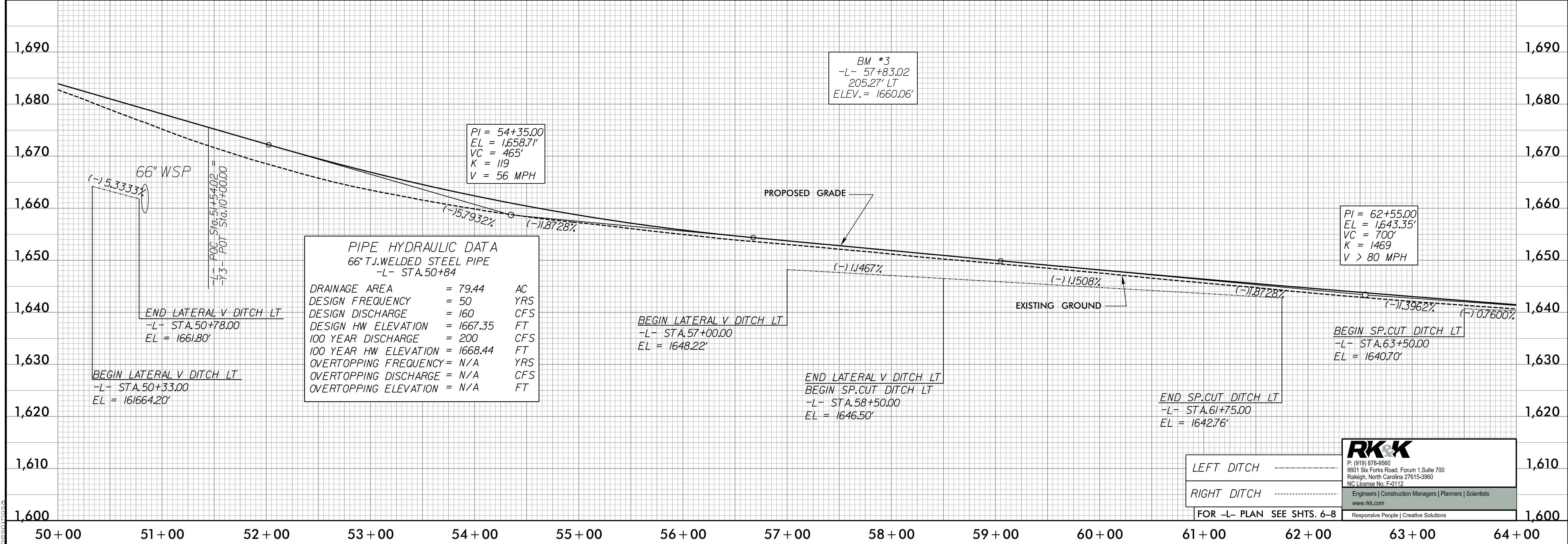
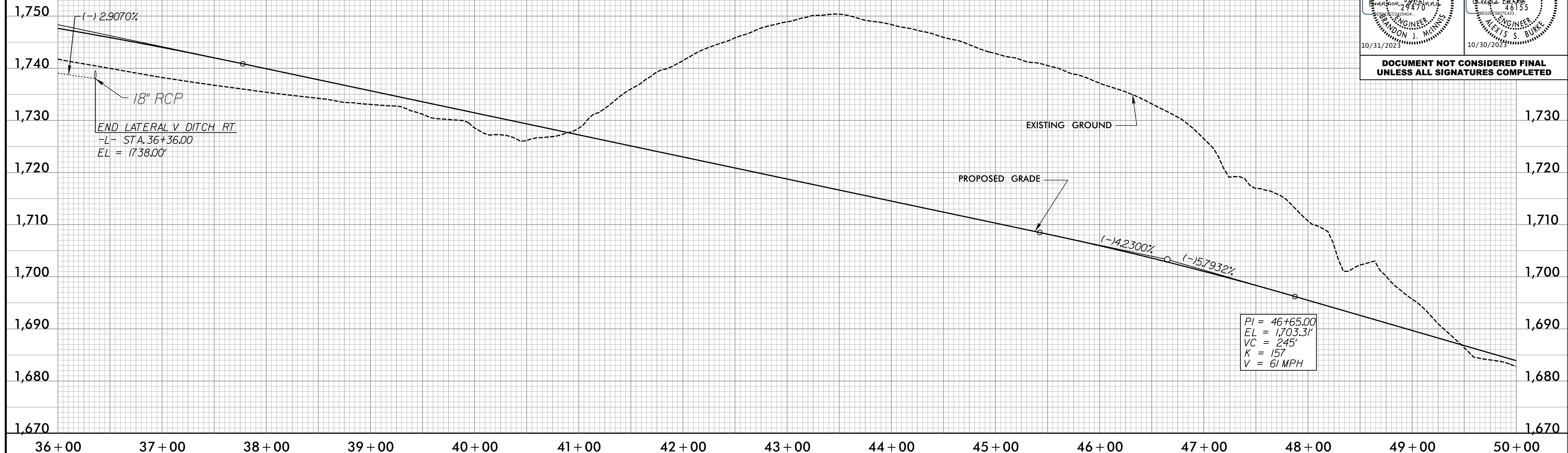


5/28/99

BM #2
-L- 38+80.35
109.2' RT
ELEV. = 1745.61'

PROJECT REFERENCE NO. R-5861		SHEET NO. 23
ROADWAY DESIGN ENGINEER SPAIN, JAMES 29470 10/31/2023	HYDRAULICS ENGINEER ALEXIS S. BURKE 16155 10/30/2023	

DOCUMENT NOT CONSIDERED FINAL
UNLESS ALL SIGNATURES COMPLETED



PIPE HYDRAULIC DATA
66" T.J. WELDED STEEL PIPE
-L- STA. 50+84

DRAINAGE AREA	= 79.44	AC
DESIGN FREQUENCY	= 50	YRS
DESIGN DISCHARGE	= 160	CFS
DESIGN HW ELEVATION	= 1667.35	FT
100 YEAR DISCHARGE	= 200	CFS
100 YEAR HW ELEVATION	= 1668.44	FT
OVERTOPPING FREQUENCY	= N/A	YRS
OVERTOPPING DISCHARGE	= N/A	CFS
OVERTOPPING ELEVATION	= N/A	FT

RK&K
P: (919) 878-9560
8801 Six Forks Road, Forum 1, Suite 700
Raleigh, North Carolina 27615-3960
NC License No. F-0112
Engineers | Construction Managers | Planners | Scientists
www.rkk.com
Responsive People | Creative Solutions

LEFT DITCH
RIGHT DITCH
FOR -L- PLAN SEE SHTS. 6-8

10/16/2023
R:\Projects\2023\Projects\5861\RD\pfl23.dgn