
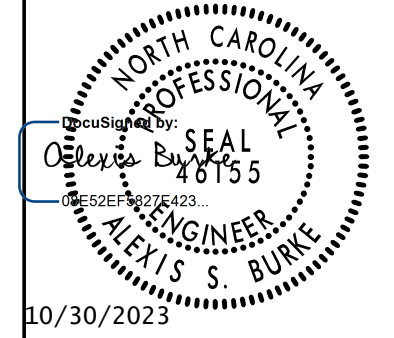
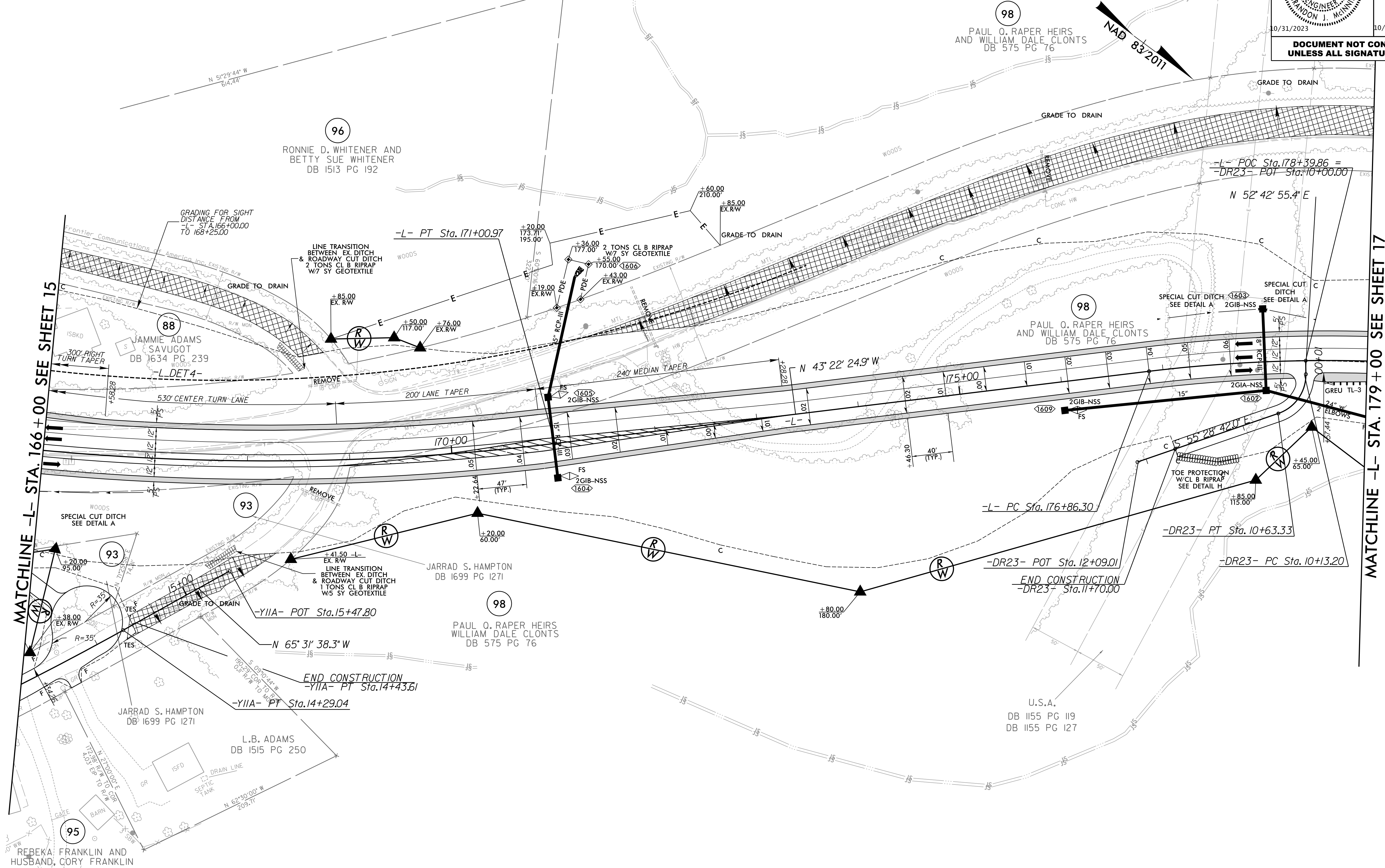


8/17/99

PROJECT REFERENCE NO. R-5861		SHEET NO. 16	
ROADWAY DESIGN ENGINEER		HYDRAULICS ENGINEER	
			
DOCUMENT NOT CONSIDERED FINAL UNLESS ALL SIGNATURES COMPLETED			

-L-	-Y11A-	-DR23
PI Sta 167+07.22	PI Sta 183+05.70	PI Sta 12+69.51
$\Delta = 19^{\circ} 33' 25.8"$ (LT)	$\Delta = 46^{\circ} 24' 17.4"$ (RT)	$\Delta = 6^{\circ} 29' 21.2"$ (LT)
D = 2' 27' 32.6"	D = 3' 57' 54.4"	D = 2' 01' 54.4"
L = 795.32'	L = 1,170.33'	L = 319.39'
T = 401.56'	T = 619.40'	T = 159.87'
R = 2,330.00'	R = 1,445.00'	R = 2,820.00'
SE = 0.05	SE = 0.06	SE = 0.02
RO = 235'	RO = 240'	DS = 30 MPH
DS = 60 MPH	DS = 60 MPH	DS = 15 MPH



MATCHLINE -L- STA. 166+00 SEE SHEET 15

MATCHLINE -L- STA. 179+00 SEE SHEET 17

NOTE: ALL DRIVES ARE 16' WIDE WITH 10' RADII UNLESS OTHERWISE NOTED.

FOR -L- PROFILE SEE SHTS. 27 & 28
 FOR -Y11A- PROFILE SEE SHT. 33
 FOR -DR23- PROFILE SEE SHT. 37
 FOR DITCH DETAILS SEE SHT. 2D-1 & 2D-2

RK&K
 P: (919) 978-9560
 8601 Six Forks Road, Forum 1, Suite 700
 Raleigh, North Carolina 27615-3960
 NC License No. F-0112
 Engineers | Construction Managers | Planners | Scientists
 www.rkk.com
 Responsive People | Creative Solutions

10/16/2023 R:\Roadway\Proj\NR5861_Rdy_psh16.dgn