

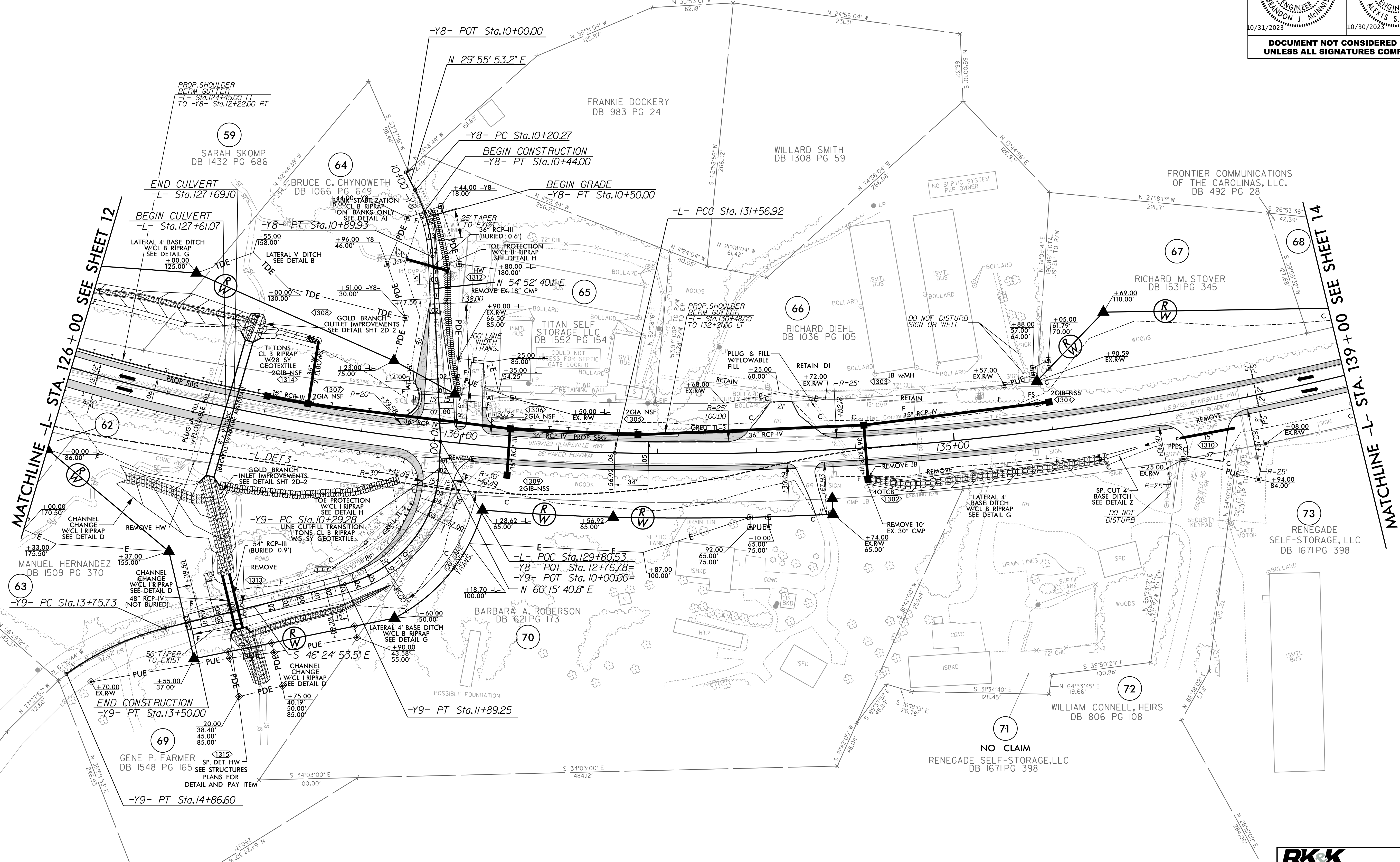
8/17/99

10/16/2023
R:\Roadway\Proj\NR5861_Rdy_psh13.dgn

-L-	-Y8-	-Y9-
PI Sta 127+30.02	PI Sta 135+82.23	PI Sta 10+55.66
$\Delta = 23^\circ 20' 58.3" (LT)$	$\Delta = 16^\circ 58' 31.5" (LT)$	$\Delta = 24^\circ 56' 46.9" (RT)$
D = 2' 4" 46.6"	D = 2' 00' 37.4"	D = 35' 48' 35.5"
L = 865.99'	L = 844.39'	L = 696.6'
T = 439.09'	T = 425.31'	T = 35.39'
R = 2,125.00'	R = 2,850.00'	R = 160.00'
SE = 0.06	SE = 0.05	SE = 0.03
DS = 60 MPH	DS = 60 MPH	DS = 15 MPH



PROJECT REFERENCE NO. R-5861	SHEET NO. 13
ROADWAY DESIGN ENGINEER	HYDRAULICS ENGINEER
DOCUMENT NOT CONSIDERED FINAL UNLESS ALL SIGNATURES COMPLETED	



NOTE: ALL DRIVES ARE 16' WIDE WITH 10' RADII UNLESS OTHERWISE NOTED.

FOR -L- PROFILE SEE SHT. 26
 FOR -Y8- PROFILE SEE SHT. 31
 FOR -Y9- PROFILE SEE SHT. 32
 FOR DITCH DETAILS SEE SHT. 2D-1 & 2D-2
 FOR HEADWALL SPECIAL DETAIL SEE SHTS. S-1 THRU S-6

RK&K
 P: (919) 978-9560
 8601 Six Forks Road, Forum 1, Suite 700
 Raleigh, North Carolina 27615-3960
 NC License No. F-0112
 Engineers | Construction Managers | Planners | Scientists
 www.rk.com
 Responsive People | Creative Solutions