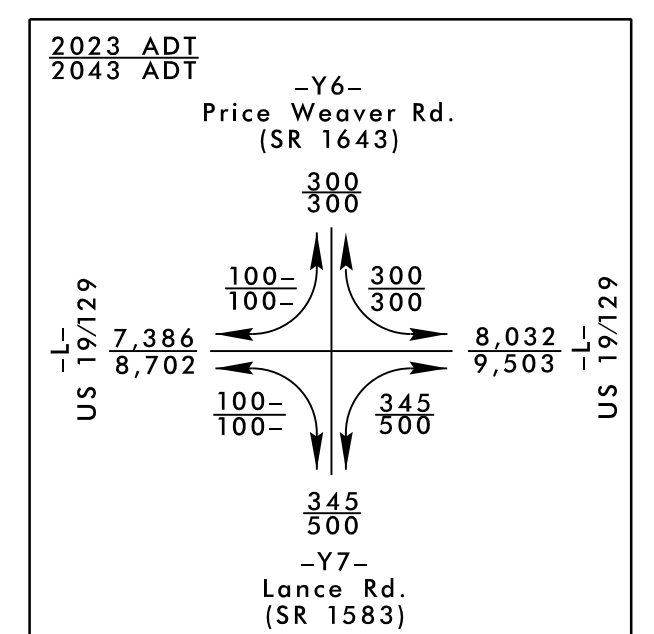
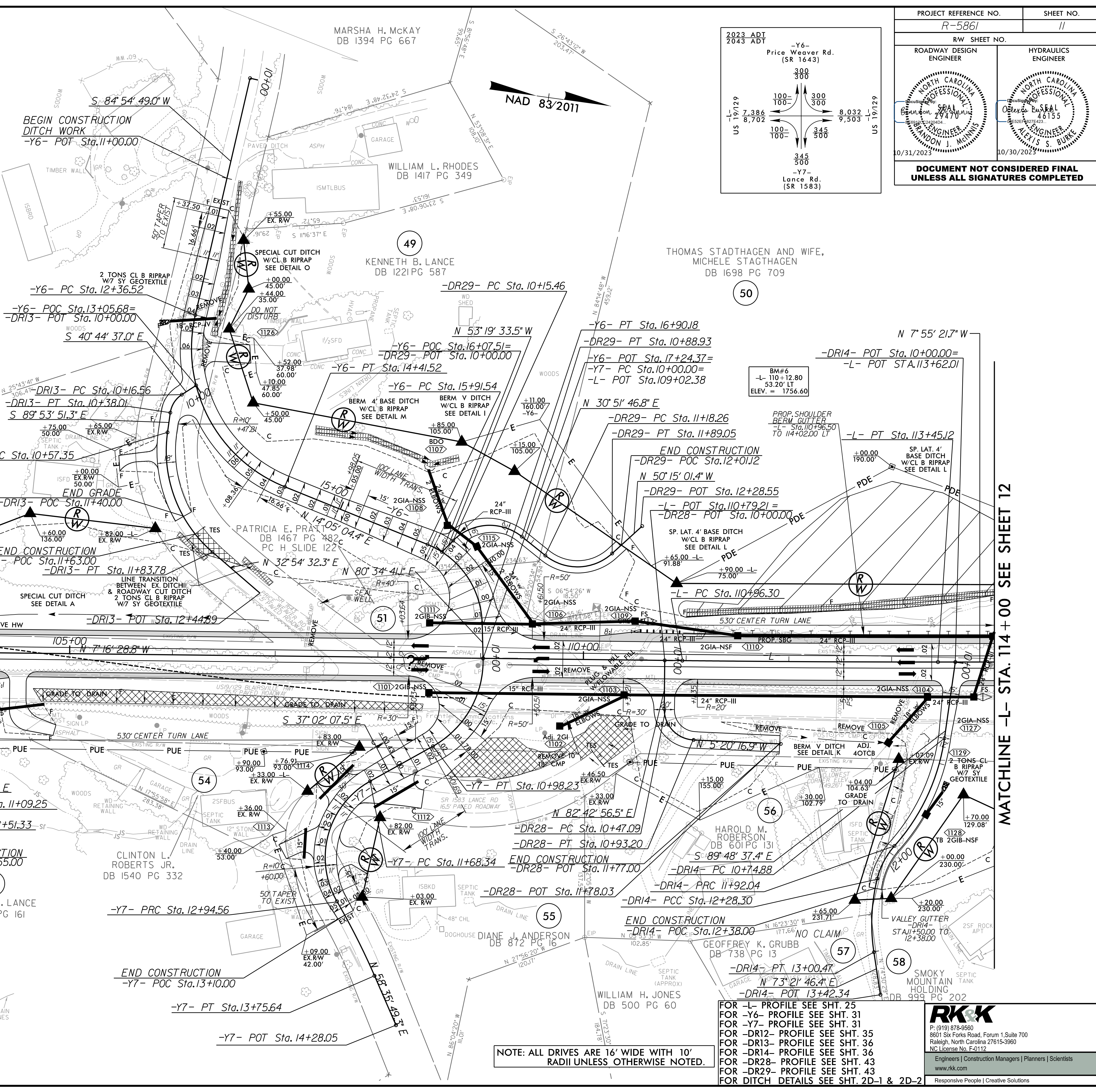


8/17/19

-L-		-Y6-		-DR12-	
PI Sta 112+20.71 Δ = 0° 38' 52.86" (LT) D = 0' 15' 37.57" L = 248.82' T = 124.41' R = 22,000.00' SE = NC RO = 70' DS = 60 MPH	PI Sta 13+60.37 Δ = 81° 00' 06.6" (LT) D = 39' 30' 51.6" L = 204.99' T = 123.85' R = 145.00' SE = 0.06 RO = 100' DS = 25 MPH	PI Sta 16+47.26 Δ = 66° 29' 36.7" (RT) D = 67' 24' 24.5" L = 98.65' T = 55.72' R = 85.00' SE = 0.05 RO = 75' DS = 20 MPH	PI Sta 11+30.31 Δ = 3° 00' 57.2" (RT) D = 7' 09' 59.9" L = 42.08' T = 21.06' R = 800.00' SE = 0.02 DS = 15 MPH	Δ = 66° 29' 36.7" (RT) D = 3' 00' 57.2" (RT) Δ = 88° 03' 13.4" (LT) D = 190' 59' 09.4" L = 46.10' T = 29.00' R = 30.00' SE = 0.02 DS = 15 MPH	Δ = 3' 00' 57.2" (RT) D = 7' 09' 59.9" L = 42.08' T = 21.06' R = 800.00' SE = 0.02 DS = 15 MPH
-DR13-		-DR29-		-DR28-	
PI Sta 10+28.00 Δ = 49° 09' 14.4" (LT) D = 229' 10' 59.2" L = 21.45' T = 11.43' R = 25.00' SE = 0.02 DS = 15 MPH	PI Sta 11+28.22 Δ = 57° 11' 36.3" (LT) D = 45' 14' 23.0" L = 126.42' T = 70.87' R = 130.00' SE = 0.02 DS = 15 MPH	PI Sta 10+60.63 Δ = 84° 11' 20.2" (RT) D = 114' 35' 29.6" L = 73.47' T = 42.79' R = 50.00' SE = 0.02 DS = 15 MPH	PI Sta 10+76.09 Δ = 88° 03' 13.4" (LT) D = 190' 59' 09.4" L = 46.10' T = 29.00' R = 30.00' SE = 0.02 DS = 15 MPH	Δ = 88° 03' 13.4" (LT) D = 190' 59' 09.4" L = 46.10' T = 29.00' R = 30.00' SE = 0.02 DS = 15 MPH	Δ = 88° 03' 13.4" (LT) D = 190' 59' 09.4" L = 46.10' T = 29.00' R = 30.00' SE = 0.02 DS = 15 MPH
-DR14-		-DR29-		-DR28-	
PI Sta 11+35.19 Δ = 33° 33' 54.5" (RT) D = 28' 38' 52.4" L = 117.16' T = 60.32' R = 200.00' SE = 0.02 DS = 15 MPH	PI Sta 12+10.53 Δ = 27° 41' 53.8" (LT) D = 76' 23' 39.7" L = 36.26' T = 18.49' R = 75.00' SE = 0.02 DS = 15 MPH	PI Sta 12+64.86 Δ = 22° 41' 36.9" (LT) D = 31' 26' 41.0" L = 72.17' T = 36.56' R = 182.21' SE = 0.02 DS = 15 MPH	PI Sta 10+10.00 Δ = 88° 03' 13.4" (LT) D = 190' 59' 09.4" L = 46.10' T = 29.00' R = 30.00' SE = 0.02 DS = 15 MPH	Δ = 88° 03' 13.4" (LT) D = 190' 59' 09.4" L = 46.10' T = 29.00' R = 30.00' SE = 0.02 DS = 15 MPH	Δ = 88° 03' 13.4" (LT) D = 190' 59' 09.4" L = 46.10' T = 29.00' R = 30.00' SE = 0.02 DS = 15 MPH



PROJECT REFERENCE NO. R-5861	SHEET NO. 11
ROADWAY DESIGN ENGINEER NORTH CAROLINA PROFESSIONAL ENGINEER SEAL BRANDON J. McINNIS 10/31/2023	HYDRAULICS ENGINEER NORTH CAROLINA PROFESSIONAL ENGINEER SEAL ALEXIS S. BURKE 10/30/2023
DOCUMENT NOT CONSIDERED FINAL UNLESS ALL SIGNATURES COMPLETED	

10/6/2023 R:\Roadway\Proj\NR5861_Rdy_psh1.rdg

NOTE: ALL DRIVES ARE 16' WIDE WITH 10' RADII UNLESS OTHERWISE NOTED.

FOR -L- PROFILE SEE SHT. 25
 FOR -Y6- PROFILE SEE SHT. 31
 FOR -Y7- PROFILE SEE SHT. 31
 FOR -DR12- PROFILE SEE SHT. 35
 FOR -DR13- PROFILE SEE SHT. 36
 FOR -DR14- PROFILE SEE SHT. 36
 FOR -DR28- PROFILE SEE SHT. 43
 FOR -DR29- PROFILE SEE SHT. 43
 FOR DITCH DETAILS SEE SHT. 2D-1 & 2D-2

RK&K
 P: (919) 978-9560
 8601 Six Forks Road, Forum 1, Suite 700
 Raleigh, North Carolina 27615-3960
 NC License No. F-0112
 Engineers | Construction Managers | Planners | Scientists
 www.rkandk.com
 Responsive People | Creative Solutions