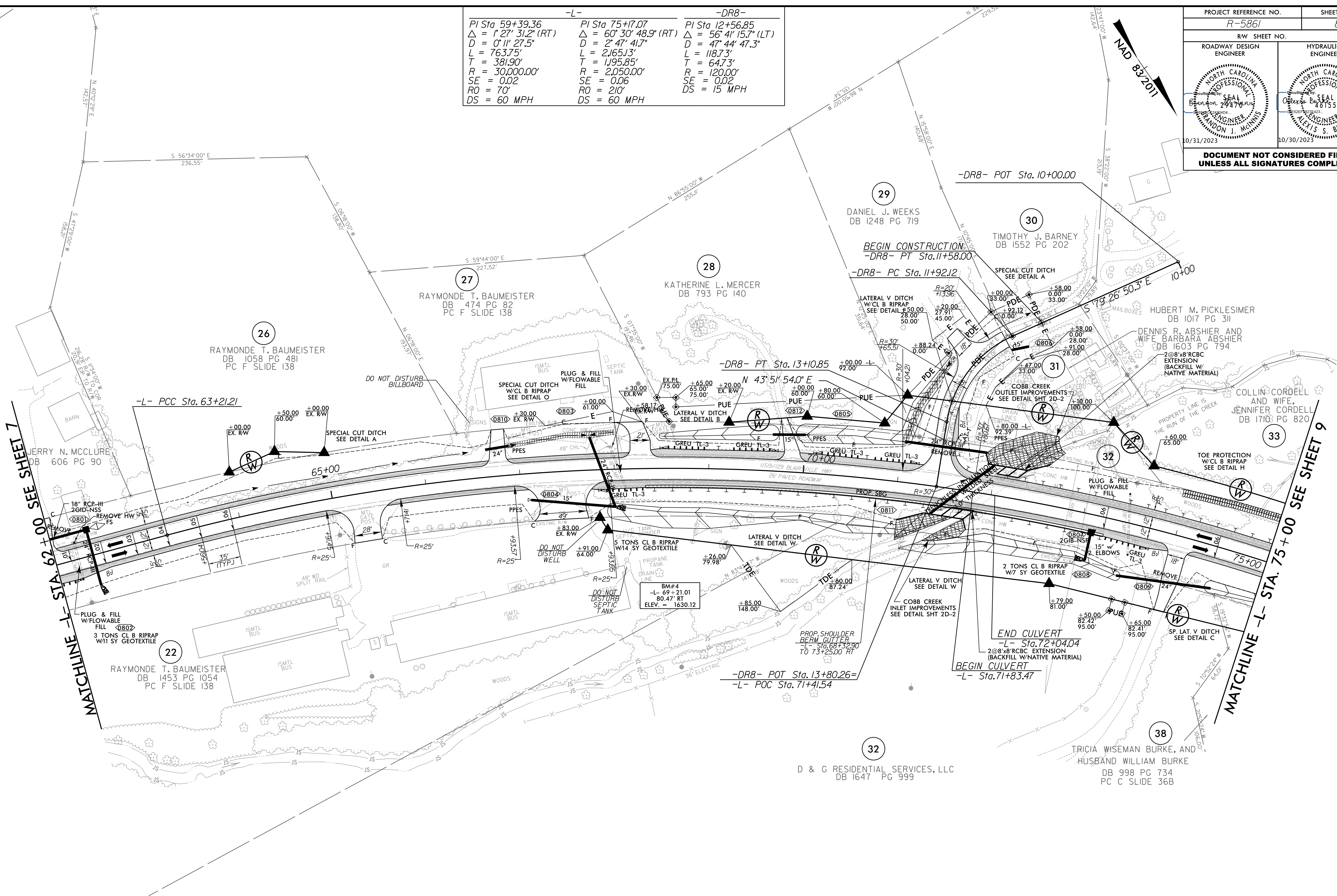


8/17/99

-L-		-DR8-	
PI Sta 59+39.36	PI Sta 75+17.07	PI Sta 12+56.85	
$\Delta = 1' 27' 31.2''$ (RT)	$\Delta = 60' 30' 48.9''$ (RT)	$\Delta = 56' 41' 15.7''$ (LT)	
D = 0' 11' 27.5"	D = 2' 47' 41.7"	D = 47' 44' 47.3"	
L = 763.75'	L = 2,165.13'	L = 118.73'	
T = 381.90'	T = 1,955.85'	T = 64.73'	
R = 30,000.00'	R = 2,050.00'	R = 120.00'	
SE = 0.02	SE = 0.06	SE = 0.02	
RO = 70'	RO = 210'	DS = 15 MPH	
DS = 60 MPH	DS = 60 MPH		

PROJECT REFERENCE NO. R-5861	SHEET NO. 8
ROADWAY DESIGN ENGINEER	HYDRAULICS ENGINEER
DOCUMENT NOT CONSIDERED FINAL UNLESS ALL SIGNATURES COMPLETED	



NOTE: ALL DRIVES ARE 16' WIDE WITH 10' RADII UNLESS OTHERWISE NOTED.

10/16/2023
R:\Roadway\Proj\NR5861_Rdy_psh08.dgn

FOR -L- PROFILE SEE SHTS. 23-24
FOR -DR8- PROFILE SEE SHT. 35
FOR DITCH DETAILS SEE SHT. 2D-1 & 2D-2

RK&K
P: (919) 978-9560
8601 Six Forks Road, Forum 1, Suite 700
Raleigh, North Carolina 27615-3960
NC License No. F-0112

Engineers | Construction Managers | Planners | Scientists
www.rk.com
Responsive People | Creative Solutions