

8/17/99

10/6/2023 R:\Roadway\Proj\NR5861\_Rdy\_psh07.dgn

-L-		-Y3A-		-DR6-		-DR7-	
PI Sta 50+66.87	PI Sta 59+39.36	PI Sta 11+44.57	PI Sta 11+21.86	PI Sta 11+78.95	PI Sta 12+00.39		
$\Delta = 58^\circ 48' 26.3" (LT)$	$\Delta = 1^\circ 27' 31.2" (RT)$	$\Delta = 63^\circ 45' 38.0" (RT)$	$\Delta = 53^\circ 56' 30.0" (LT)$	$\Delta = 52^\circ 28' 26.9" (LT)$	$\Delta = 19^\circ 53' 23.0" (LT)$		
D = 5' 24' 18.9"	D = 0' 11' 27.5"	D = 77' 2' 51.7"	D = 76' 23' 39.7"	D = 114' 35' 29.6"	D = 47' 44' 47.3"		
L = 1,087.96'	L = 763.75'	L = 82.42'	L = 70.61'	L = 45.79'	L = 41.66'		
T = 597.37'	T = 381.90'	T = 49.76'	T = 38.17'	T = 24.64'	T = 21.04'		
R = 1,060.00'	R = 30,000.00'	R = 80.00'	R = 75.00'	R = 50.00'	R = 120.00'		
SE = 0.06	SE = 0.02	SE = 0.06	SE = 0.02	SE = 0.02	SE = 0.02		
RO = 195'	RO = 70'	RO = 90'	DS = 15 MPH	DS = 15 MPH	DS = 15 MPH		
DS = 55 MPH	DS = 60 MPH	DS = 15 MPH					

PROJECT REFERENCE NO. R-5861 SHEET NO. 7

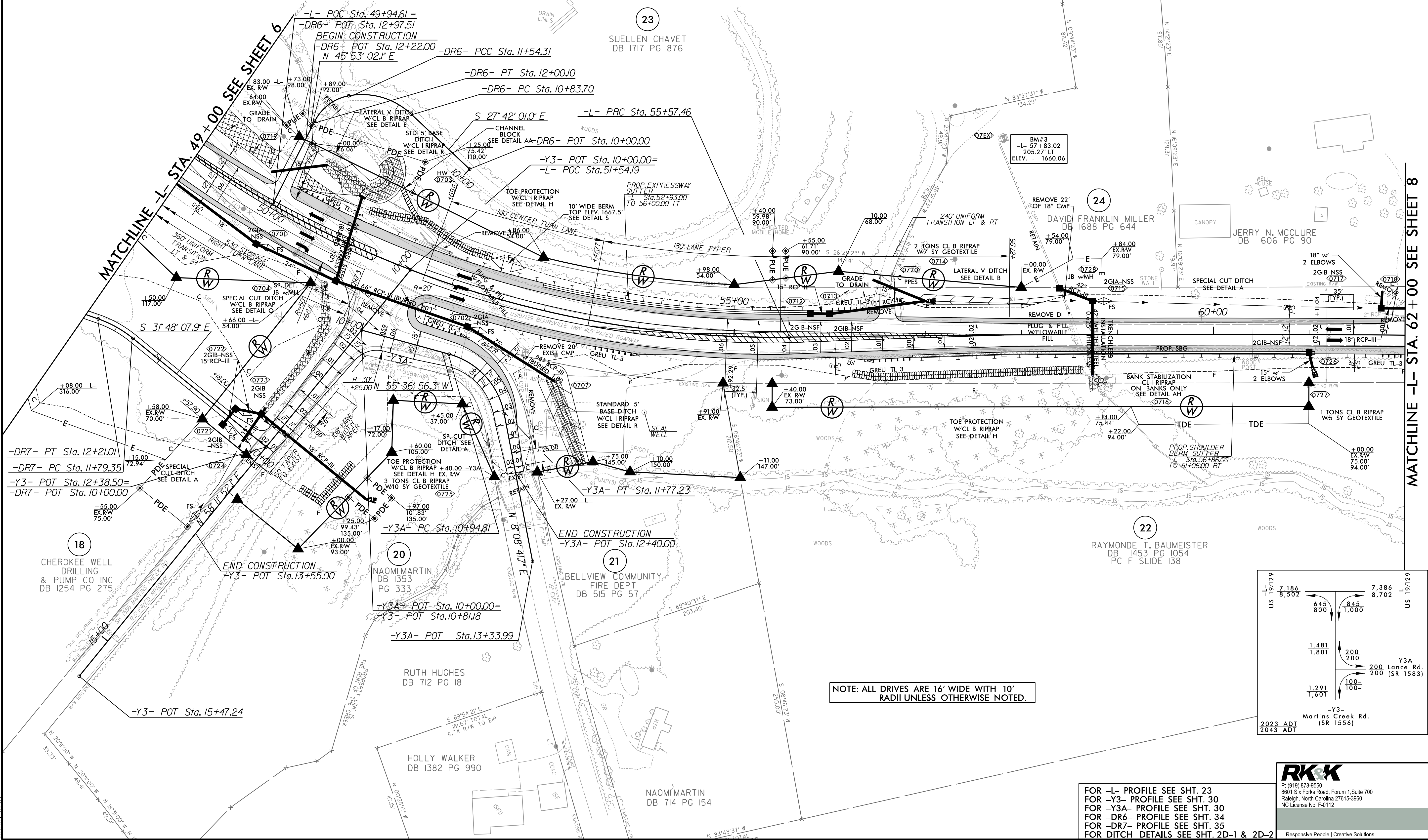
RW SHEET NO. ENGINEER

HYDRAULICS ENGINEER

**Professional Engineer Seal:**  
 NORTH CAROLINA PROFESSIONAL ENGINEER  
 RANDON J. MCINNES  
 10/31/2023

**Professional Engineer Seal:**  
 NORTH CAROLINA PROFESSIONAL ENGINEER  
 ALEXIS S. BURKE  
 10/30/2023

**DOCUMENT NOT CONSIDERED FINAL UNLESS ALL SIGNATURES COMPLETED**



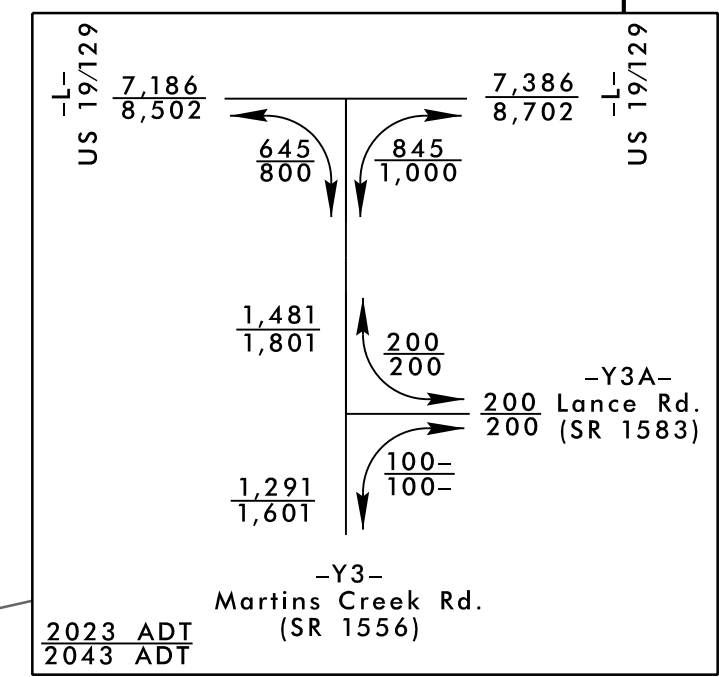
-DR7- PT Sta. 12+21.01  
 -DR7- PC Sta. 11+79.35  
 -Y3- POT Sta. 12+38.50=  
 -DR7- POT Sta. 10+00.00

END CONSTRUCTION  
 -Y3- POT Sta. 13+55.00

-Y3A- PC Sta. 10+94.81  
 -Y3A- POT Sta. 10+00.00=  
 -Y3- POT Sta. 10+81.18  
 -Y3A- POT Sta. 13+33.99

END CONSTRUCTION  
 -Y3A- POT Sta. 12+40.00

NOTE: ALL DRIVES ARE 16' WIDE WITH 10' RADII UNLESS OTHERWISE NOTED.



FOR -L- PROFILE SEE SHT. 23  
 FOR -Y3- PROFILE SEE SHT. 30  
 FOR -Y3A- PROFILE SEE SHT. 30  
 FOR -DR6- PROFILE SEE SHT. 34  
 FOR -DR7- PROFILE SEE SHT. 35  
 FOR DITCH DETAILS SEE SHT. 2D-1 & 2D-2

**RK&K**  
 P: (919) 978-9560  
 8601 Six Forks Road, Forum 1, Suite 700  
 Raleigh, North Carolina 27615-3960  
 NC License No. F-0112

Responsive People | Creative Solutions

MATCHLINE -L- STA. 62+00 SEE SHEET 8