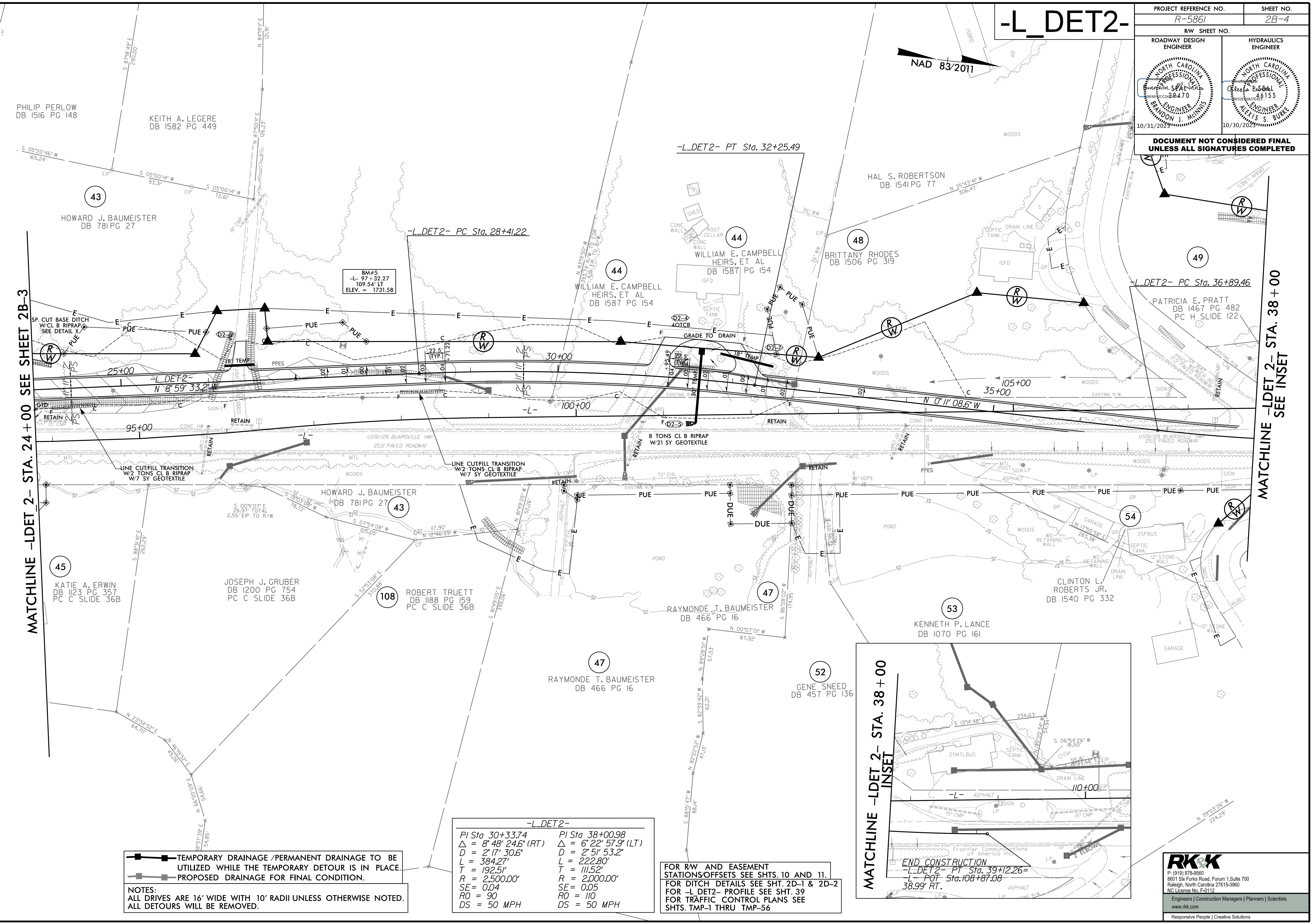


-L_DET2-

PROJECT REFERENCE NO. R-5861	SHEET NO. 2B-4
RW SHEET NO.	
ROADWAY DESIGN ENGINEER	HYDRAULICS ENGINEER

**DOCUMENT NOT CONSIDERED FINAL
UNLESS ALL SIGNATURES COMPLETED**



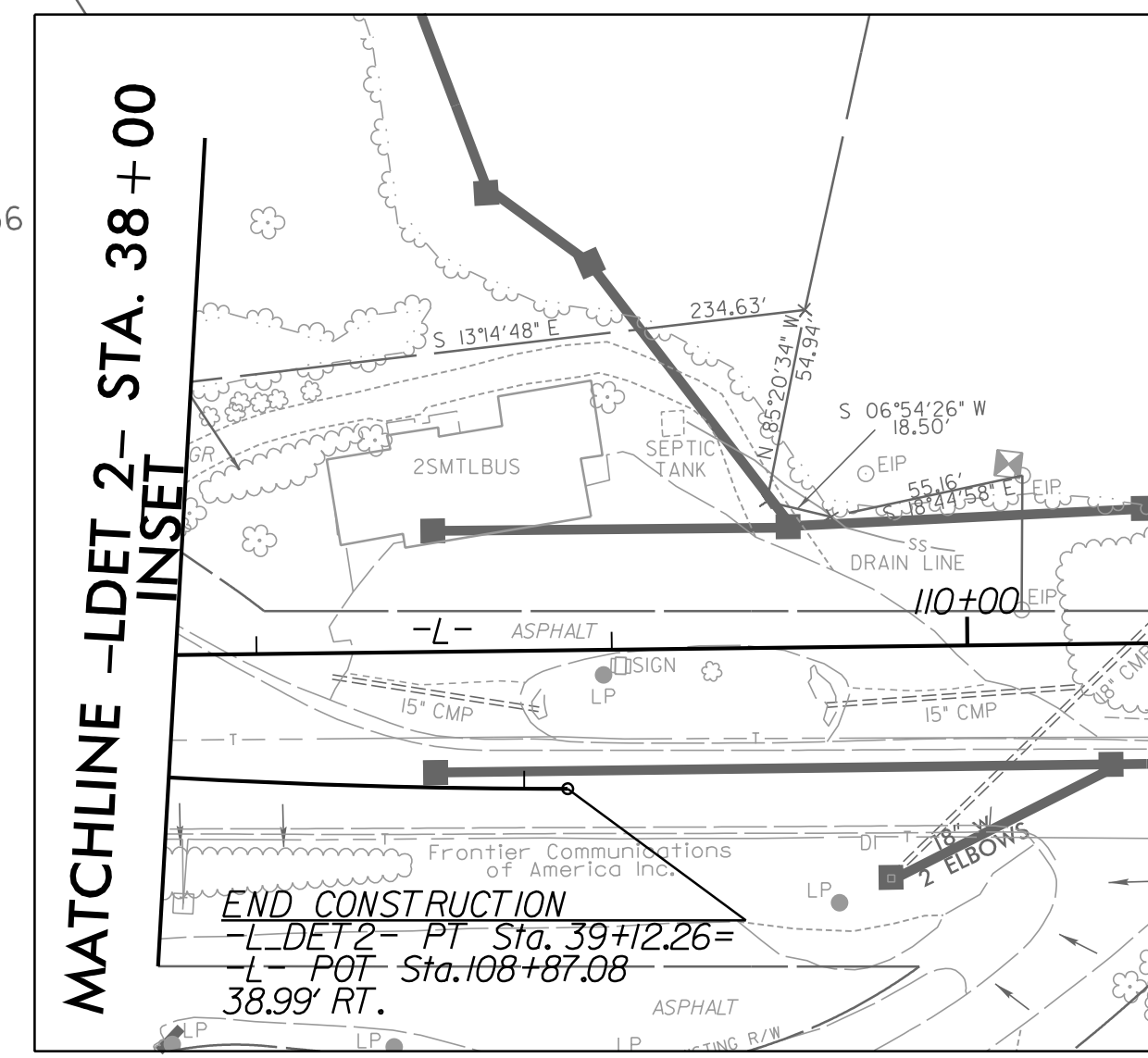
MATCHLINE -LDET 2- STA. 24+00 SEE SHEET 2B-3

MATCHLINE -LDET 2- STA. 38+00 SEE INSET

TEMPORARY DRAINAGE /PERMANENT DRAINAGE TO BE UTILIZED WHILE THE TEMPORARY DETOUR IS IN PLACE.
 PROPOSED DRAINAGE FOR FINAL CONDITION.
NOTES:
 ALL DRIVES ARE 16' WIDE WITH 10' RADII UNLESS OTHERWISE NOTED.
 ALL DETOURS WILL BE REMOVED.

-L_DET2-	
PI Sta 30+33.74	PI Sta 38+00.98
Δ = 8' 48" 24.6" (RT)	Δ = 6' 22" 57.9" (LT)
D = 2' 17" 30.6"	D = 2' 51" 53.2"
L = 384.27'	L = 222.80'
T = 192.51'	T = 111.52'
R = 2,500.00'	R = 2,000.00'
SE = 0.04	SE = 0.05
RO = 90	RO = 110
DS = 50 MPH	DS = 50 MPH

FOR RW AND EASEMENT STATION/OFFSETS SEE SHTS. 10 AND 11.
 FOR DITCH DETAILS SEE SHT. 2D-1 & 2D-2
 FOR -L_DET2- PROFILE SEE SHT. 39
 FOR TRAFFIC CONTROL PLANS SEE SHTS. TMP-1 THRU TMP-56



(919) 878-9560
 8601 Six Forks Road, Forum 1, Suite 700
 Raleigh, North Carolina 27615-3960
 NC License No. F-0112
 Engineers | Construction Managers | Planners | Scientists
 www.rkk.com
 Responsive People | Creative Solutions