

8/17/99

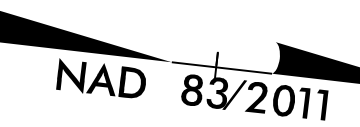
-L_DET2-

PROJECT REFERENCE NO. R-5861		SHEET NO. 2B-3	
RW SHEET NO.		HYDRAULICS ENGINEER	
ROADWAY DESIGN ENGINEER		PROFESSIONAL SEAL	

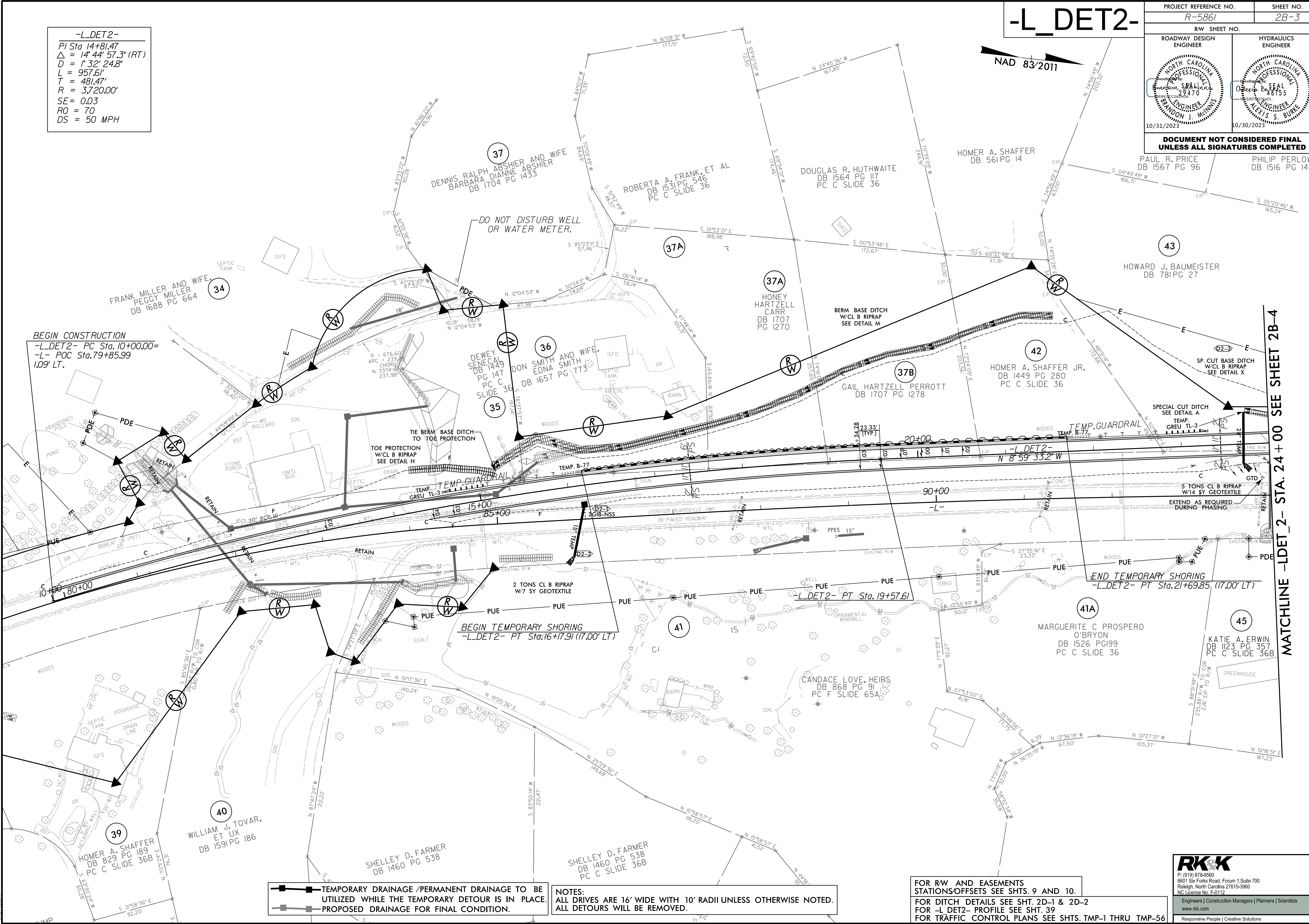
DOCUMENT NOT CONSIDERED FINAL UNLESS ALL SIGNATURES COMPLETED

PAUL R. PRICE DB 1567 PG 96	PHILIP PERLOW DB 1516 PG 148
--------------------------------	---------------------------------

-L_DET2-
 PI Sta 14+81.47
 $\Delta = 14' 44" 57.3" (RT)$
 $D = 1' 32" 24.8"$
 $L = 957.61'$
 $T = 481.47'$
 $R = 3,720.00'$
 $SE = 0.03$
 $RO = 70$
 $DS = 50 MPH$



BEGIN CONSTRUCTION
 -L_DET2- PC Sta. 10+00.00=
 -L- POC Sta. 79+85.99
 1.09' LT.



TEMPORARY DRAINAGE /PERMANENT DRAINAGE TO BE UTILIZED WHILE THE TEMPORARY DETOUR IS IN PLACE.
 PROPOSED DRAINAGE FOR FINAL CONDITION.

NOTES:
 ALL DRIVES ARE 16' WIDE WITH 10' RADII UNLESS OTHERWISE NOTED.
 ALL DETOURS WILL BE REMOVED.

FOR RW AND EASEMENTS STATIONS/OFFSETS SEE SHTS. 9 AND 10.
 FOR DITCH DETAILS SEE SHT. 2D-1 & 2D-2 FOR -L_DET2- PROFILE SEE SHT. 39
 FOR TRAFFIC CONTROL PLANS SEE SHTS. TMP-1 THRU TMP-56

RK&K
 P. (919) 878-9560
 8601 Six Forks Road, Forum 1, Suite 700
 Raleigh, North Carolina 27615-3960
 NC License No. F-0112
 Engineers | Construction Managers | Planners | Scientists
 www.rkk.com
 Responsive People | Creative Solutions

MATCHLINE -LDET2- STA. 24 + 00 SEE SHEET 2B-4

8/25/2023 R:\Roadway\Proj\NR5861_Rdy-dsn_DET_2_-psh2B-3.dgn