

8/17/199

-L_DET1-

| | |
|---------------------------------|---------------------|
| PROJECT REFERENCE NO. R-5861 | SHEET NO. 2B-2 |
| RW SHEET NO. | |
| ROADWAY DESIGN ENGINEER | HYDRAULICS ENGINEER |
| | |

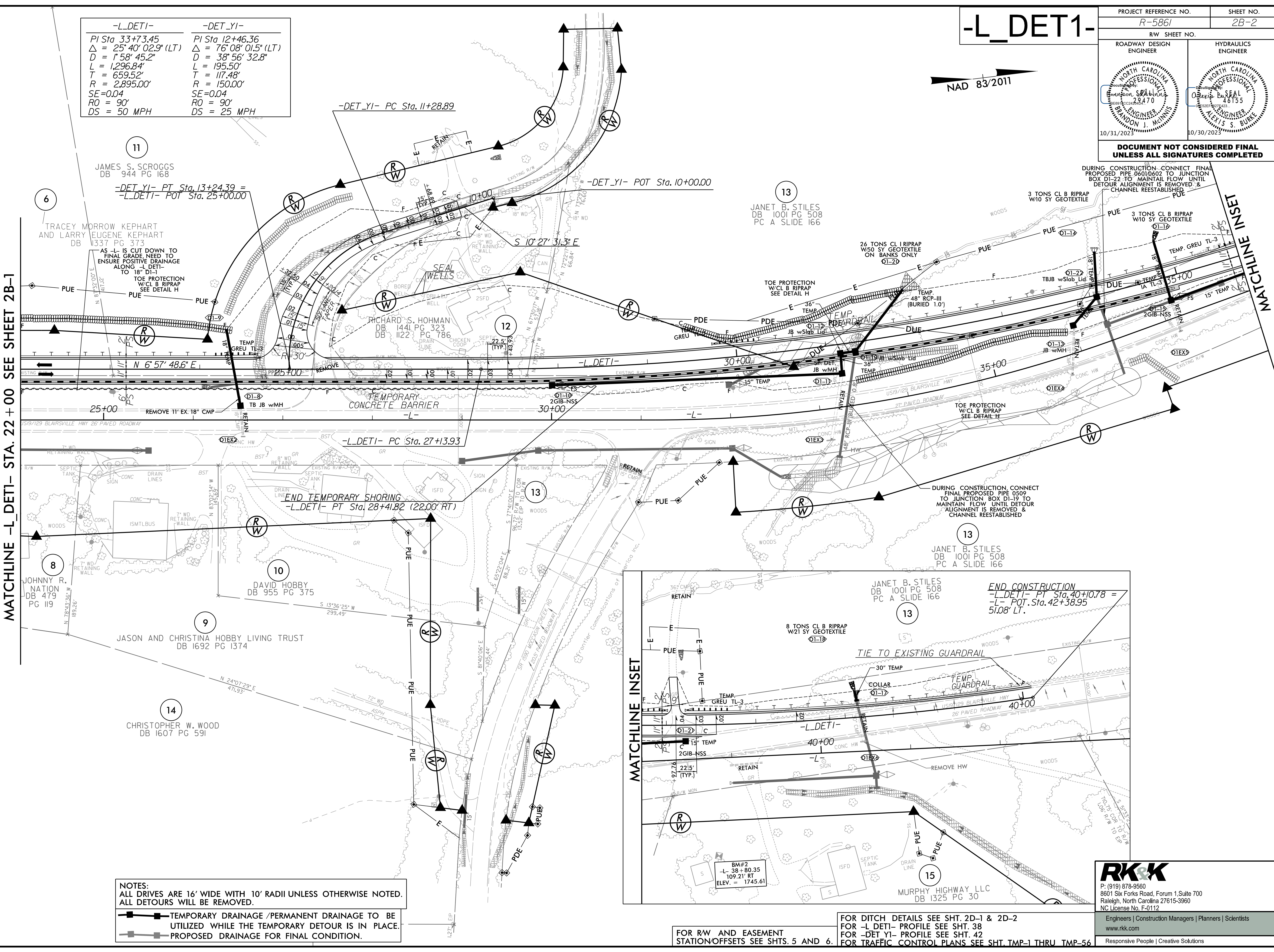
DOCUMENT NOT CONSIDERED FINAL UNLESS ALL SIGNATURES COMPLETED

NAD 83/2011

| | |
|---------------------------------------|---------------------------------------|
| -L_DET1- | -DET_Y1- |
| PI Sta 33+73.45 | PI Sta 12+46.36 |
| $\Delta = 25^{\circ} 40' 02.9''$ (LT) | $\Delta = 76^{\circ} 08' 01.5''$ (LT) |
| $D = 1'58'' 45.2''$ | $D = 38'56'' 32.8''$ |
| $L = 1,296.84'$ | $L = 195.50'$ |
| $T = 659.52'$ | $T = 117.48'$ |
| $R = 2,895.00'$ | $R = 150.00'$ |
| $SE=0.04$ | $SE=0.04$ |
| $RO = 90'$ | $RO = 90'$ |
| $DS = 50$ MPH | $DS = 25$ MPH |

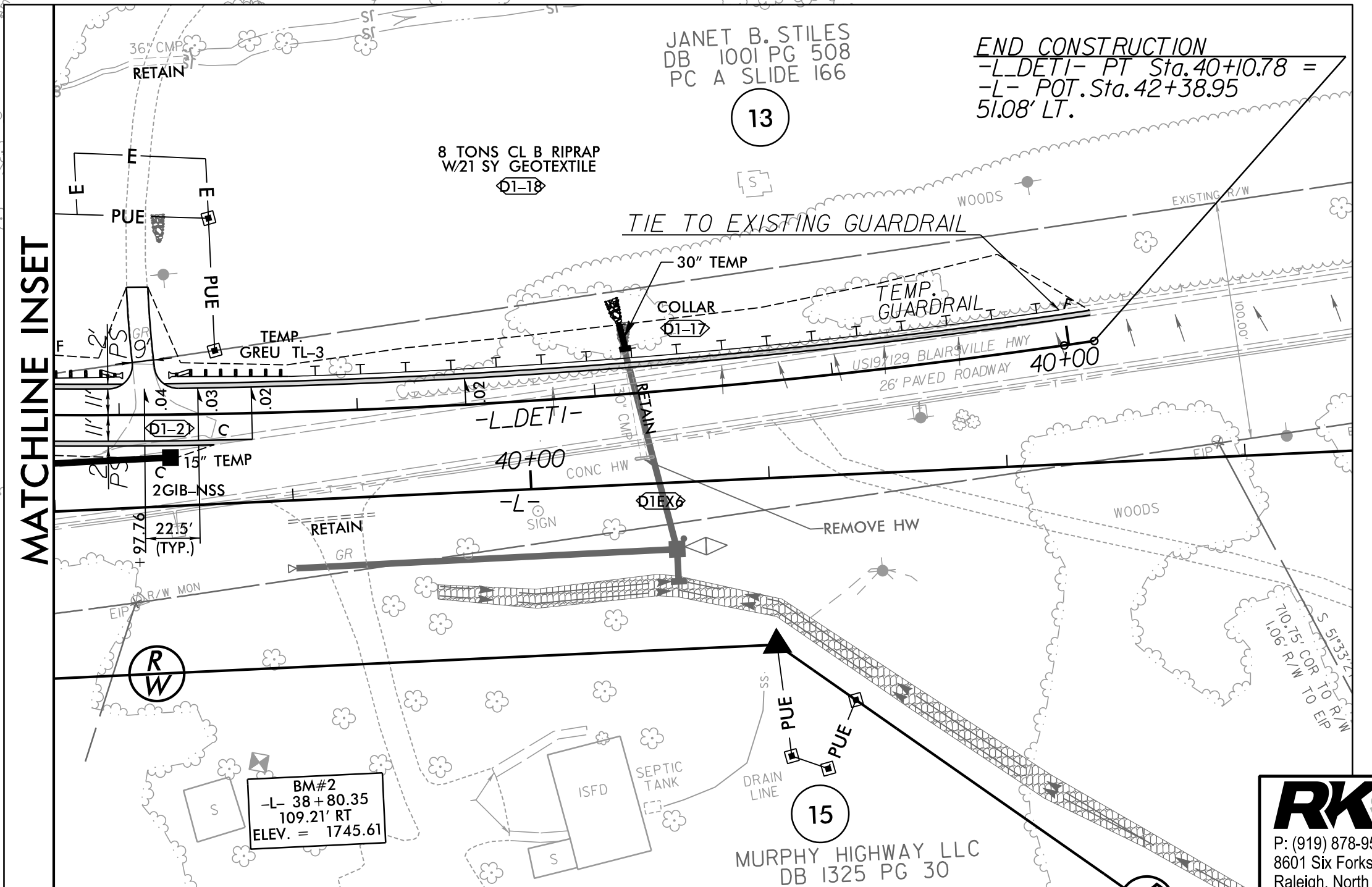
MATCHLINE -L_DET1- STA. 22 + 00 SEE SHEET 2B-1

MATCHLINE EASEMENT



NOTES:
 ALL DRIVES ARE 16' WIDE WITH 10' RADII UNLESS OTHERWISE NOTED.
 ALL DETOURS WILL BE REMOVED.

TEMPORARY DRAINAGE /PERMANENT DRAINAGE TO BE UTILIZED WHILE THE TEMPORARY DETOUR IS IN PLACE.
 PROPOSED DRAINAGE FOR FINAL CONDITION.



FOR RW AND EASEMENT STATION OFFSETS SEE SHTS. 5 AND 6.

FOR DITCH DETAILS SEE SHT. 2D-1 & 2D-2
 FOR -L_DET1- PROFILE SEE SHT. 38
 FOR -DET_Y1- PROFILE SEE SHT. 42
 FOR TRAFFIC CONTROL PLANS SEE SHT. TMP-1 THRU TMP-56

P: (919) 878-9560
 8801 Six Forks Road, Forum 1, Suite 700
 Raleigh, North Carolina 27615-3960
 NC License No. F-0112
 Engineers | Construction Managers | Planners | Scientists
 www.rkk.com
 Responsive People | Creative Solutions

8/25/2023 R:\Roadway\Proj\NR5861_Rdy.dsn -L_DET1.pah2B-2.dgn