

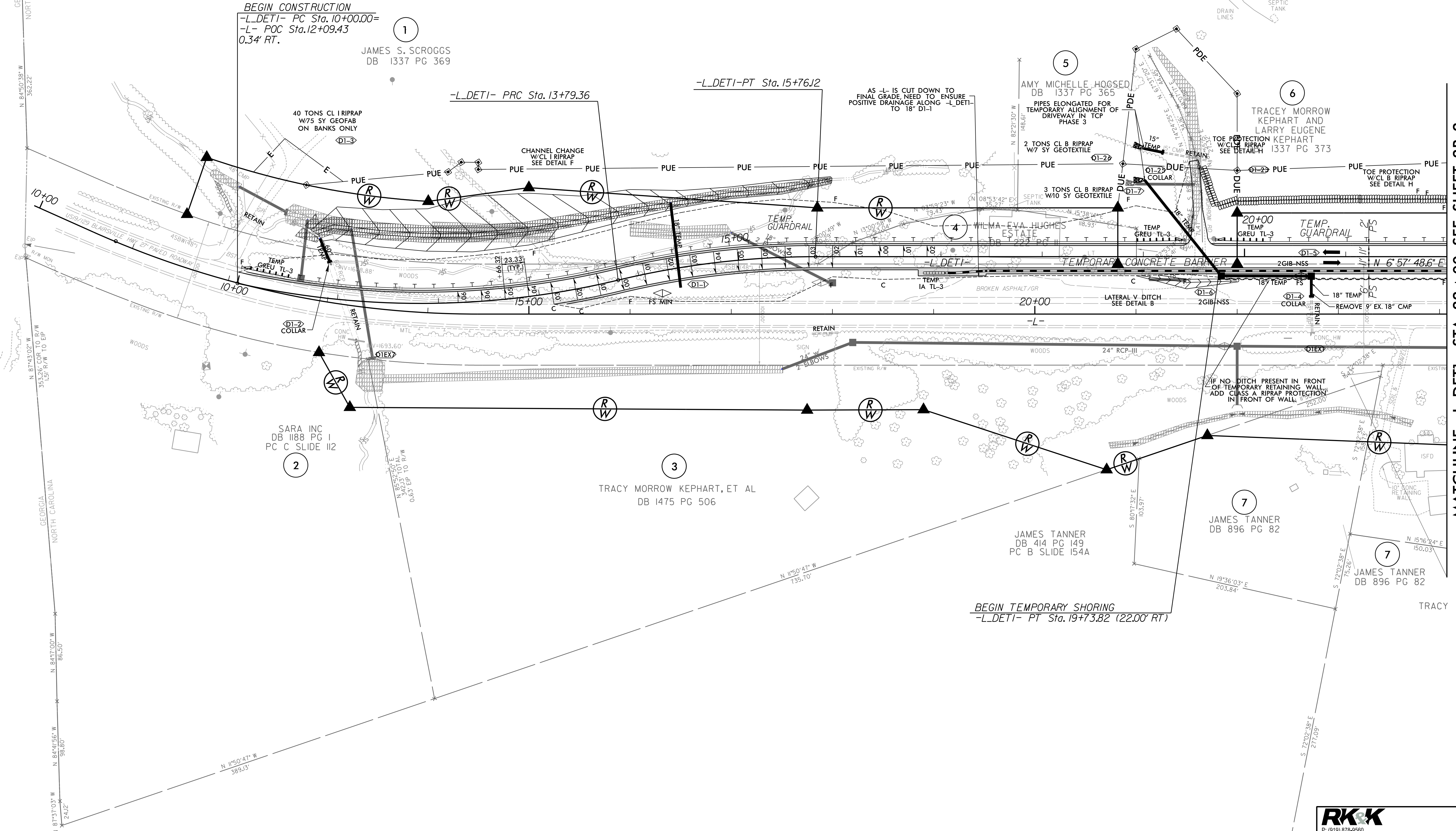
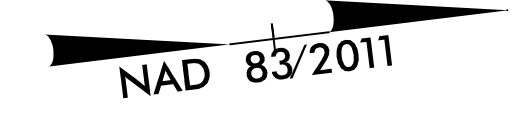
-L_DET1-

PROJECT REFERENCE NO. R-5861		SHEET NO. 2B-1	
RW SHEET NO.		HYDRAULICS ENGINEER	
ROADWAY DESIGN ENGINEER		NORTH CAROLINA PROFESSIONAL ENGINEER SEAL 40155 ALEXIS S. BURKE 10/30/2023	
NORTH CAROLINA PROFESSIONAL ENGINEER SEAL 28470 RANDON J. MCINNIS 10/31/2023		NORTH CAROLINA PROFESSIONAL ENGINEER SEAL 40155 ALEXIS S. BURKE 10/30/2023	

**DOCUMENT NOT CONSIDERED FINAL
UNLESS ALL SIGNATURES COMPLETED**

-L_DET1-

PI Sta 11+93.13	PI Sta 14+78.25
$\Delta = 26^\circ 02' 45.8" (LT)$	$\Delta = 13^\circ 30' 33.5" (RT)$
D = 6' 51' 57.2"	D = 6' 51' 57.2"
L = 379.36'	L = 196.76'
T = 193.13'	T = 98.90'
R = 835.00'	R = 835.00'
SE=0.06	SE=0.06
RO = 140	RO = 140
DS = 50 MPH	DS = 50 MPH



NOTES:
ALL DRIVES ARE 16' WIDE WITH 10' RADII UNLESS OTHERWISE NOTED.
ALL DETOURS WILL BE REMOVED.



FOR RW AND EASEMENT STATIONS/OFFSETS
SEE SHTS. 4 & 5
FOR DITCH DETAILS SEE SHTS. 2D-1 & 2D-2
FOR -L_DET1- PROFILE SEE SHT. 38
FOR TRAFFIC CONTROL PLANS SEE SHTS. TMP-1 THRU TMP-56

P: (919) 878-9500
 8801 Six Forks Road, Forum 1, Suite 700
 Raleigh, North Carolina 27615-3960
 NC License No. F-8112
 Engineers | Construction Managers | Planners | Scientists
 www.rkk.com
 Responsive People | Creative Solutions

MATCHLINE -L_DET1- STA. 22 + 00 SEE SHEET 2B-2

8/17/99
8/25/2023
R:\Roadway\Proj\NR5861_Rdy.dsn_DET_1.pah2B-1.dgn
Jinson