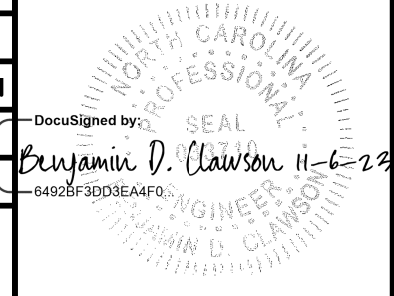
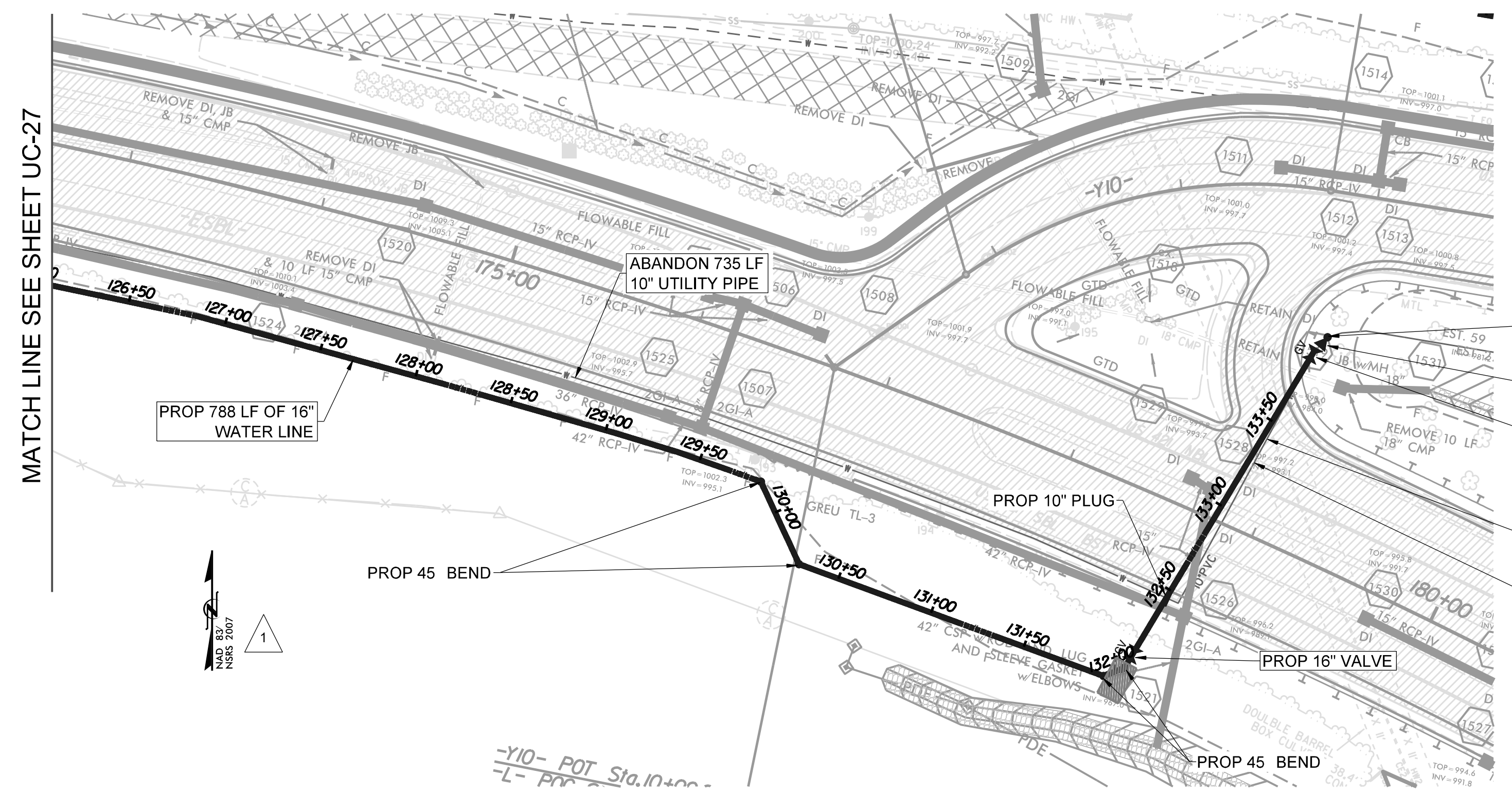


PROJECT REFERENCE NO.	SHEET NO.
U-5312	UC-28
DESIGNED BY: B. CLAWSON	
DRAWN BY: R. MOSS	
CHECKED BY: B. CLAWSON	
APPROVED BY:	
REVIS: 5/9/23 11/2/23	MUNICIPAL ENGINEERING SERVICES COMPANY, PA.
P.O. BOX 97 GARNER, NC 27529 1919172-5393	
UTILITY CONSTRUCTION PLANS ONLY	

NOTES:

1. WATERLINE MATERIAL SHALL BE: DIP-CLASS 350 (ALL OPEN TRENCH INSTALLATIONS), HDPE-DR7 (DIRECTIONAL BORE INSTALLATIONS), COPPER (SERVICE INSTALLATIONS)
2. THE CONTRACTOR SHALL VERIFY EXISTING PIPE SIZE AND MATERIAL, AND PROVIDE APPROPRIATE SIZED SLEEVE TO MAKE PROPER CONNECTIONS TO EXISTING PIPE LINES.
3. WHEN CROSSING PIPE LINES UNDER PROPOSED AND/OR EXISTING DITCHES INSURE THAT PIPE LINE WILL HAVE A MINIMUM OF 4' COVER FROM FINISHED GRADE.
4. USE RESTRAINED JOINTS AT FIRST TWO JOINTS BEYOND EACH SIDE OF FITTING IN ADDITION TO THRUST BLOCKING AT FITTING.
5. IF AN ITEM IS NOT CALLED OUT IN A BOX, IT IS INCIDENTAL TO AND INCLUDED IN THE UNIT COST OF THE PIPE LINE.
6. TWO OR MORE ADJACENT METERS SHALL BE INSTALLED IN ACCORDANCE WITH THE STANDARD DETAIL. ALL GANG METER INSTALLATIONS ON THIS PROJECT SHALL HAVE 1-INCH SERVICE TAP & SUPPLY LINE FROM MAIN LINE UNLESS DIRECTED OTHERWISE BY THE ENGINEER.
7. PIPE LINE ABANDONMENT SHALL BE AFTER NEW PIPE LINE HAS BEEN TESTED AND ACCEPTED. PIPE LINE ABANDONMENT SHALL BE IN ACCORDANCE WITH SECTION 1530 OF THE NCDOT STANDARD SPECIFICATIONS FOR ROADS AND STRUCTURES.

TOTAL WEIGHT OF DUCTILE IRON WATER PIPE FITTINGS ON SHEET UC-28 IS 1425 LBS.



- 1 - ADDED NORTH ARROW
- 2 - ADDED LABELS IN PROFILE
- 3 - CHANGED NOTE #1

- TIE PROP WATER LINE TO EXISTING WITH RESTRAINED JOINT COUPLING SEE DETAIL ON UC-3D
- PROP 16" X 10" REDUCER
- PROP 16" VALVE
- PROP 169 LF OF 30" ENCASEMENT PIPE
- PROP 169 LF OF 30" BORE AND JACK

