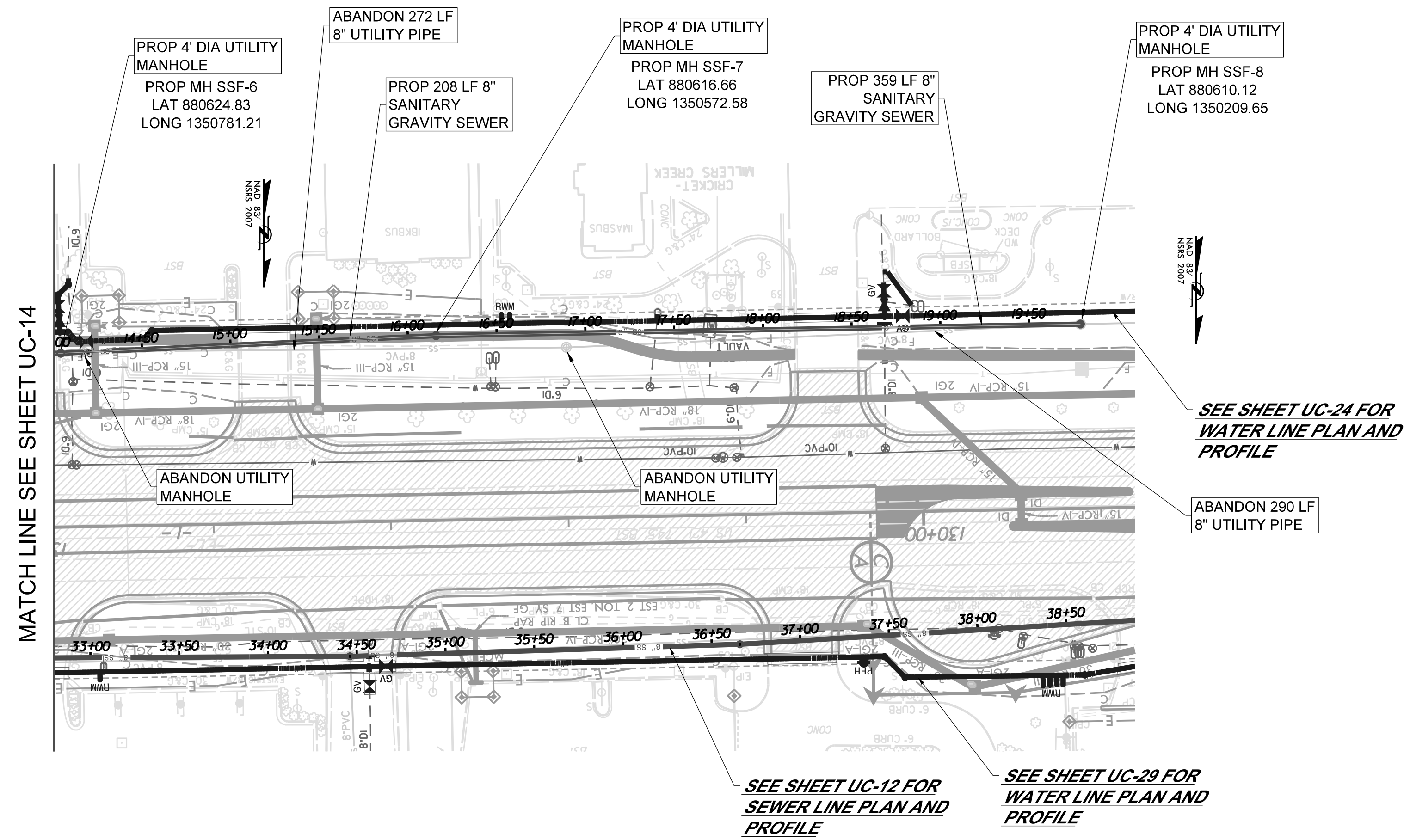


PROJECT REFERENCE NO.	SHEET NO.
U-5312	UC-15
DESIGNED BY: B. CLAWSON	
DRAWN BY: R. MOSS	
CHECKED BY: B. CLAWSON	
APPROVED BY:	
REVISID:	
MUNICIPAL ENGINEERING SERVICES COMPANY, PA.	UTILITY CONSTRUCTION PLANS ONLY
P.O. BOX 97 GARNER, NC 27529 (919) 772-5393	

NOTES:

1. THE CONTRACTOR SHALL VERIFY EXISTING PIPE SIZE AND MATERIAL AND PROVIDE APPROPRIATE SIZED SLEEVE TO MAKE PROPER CONNECTIONS TO EXISTING PIPE LINES.
2. WHEN CROSSING PIPE LINES UNDER PROPOSED AND/OR EXISTING DITCHES INSURE THAT PIPE LINE WILL HAVE A MINIMUM OF 4' COVER FROM FINISHED GRADE.
3. IF AN ITEM IS NOT CALLED OUT IN A BOX, IT IS INCIDENTAL TO AND INCLUDED IN THE UNIT COST OF THE PIPE LINE.
4. PIPE LINE ABANDONMENT SHALL BE AFTER NEW PIPE LINE HAS BEEN TESTED AND ACCEPTED. PIPE LINE ABANDONMENT SHALL BE IN ACCORDANCE WITH SECTION 1530 OF THE NCDOT STANDARD SPECIFICATIONS FOR ROADS AND STRUCTURES.

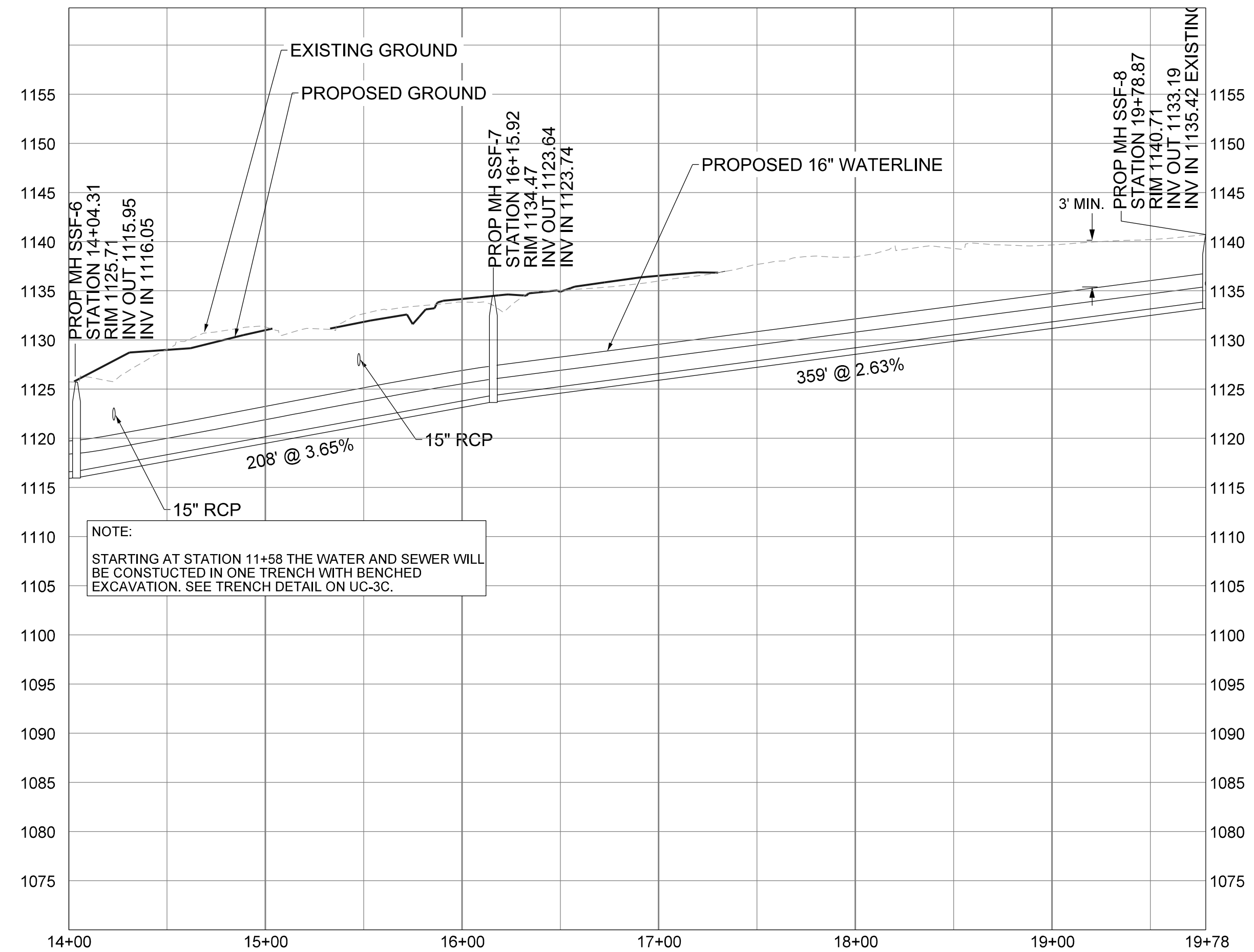


MATCH LINE SEE SHEET UC-14

SEE SHEET UC-24 FOR WATER LINE PLAN AND PROFILE

SEE SHEET UC-12 FOR SEWER LINE PLAN AND PROFILE

SEE SHEET UC-29 FOR WATER LINE PLAN AND PROFILE



NOTE:
STARTING AT STATION 11+58 THE WATER AND SEWER WILL BE CONSTRUCTED IN ONE TRENCH WITH BENCHED EXCAVATION. SEE TRENCH DETAIL ON UC-3C.