

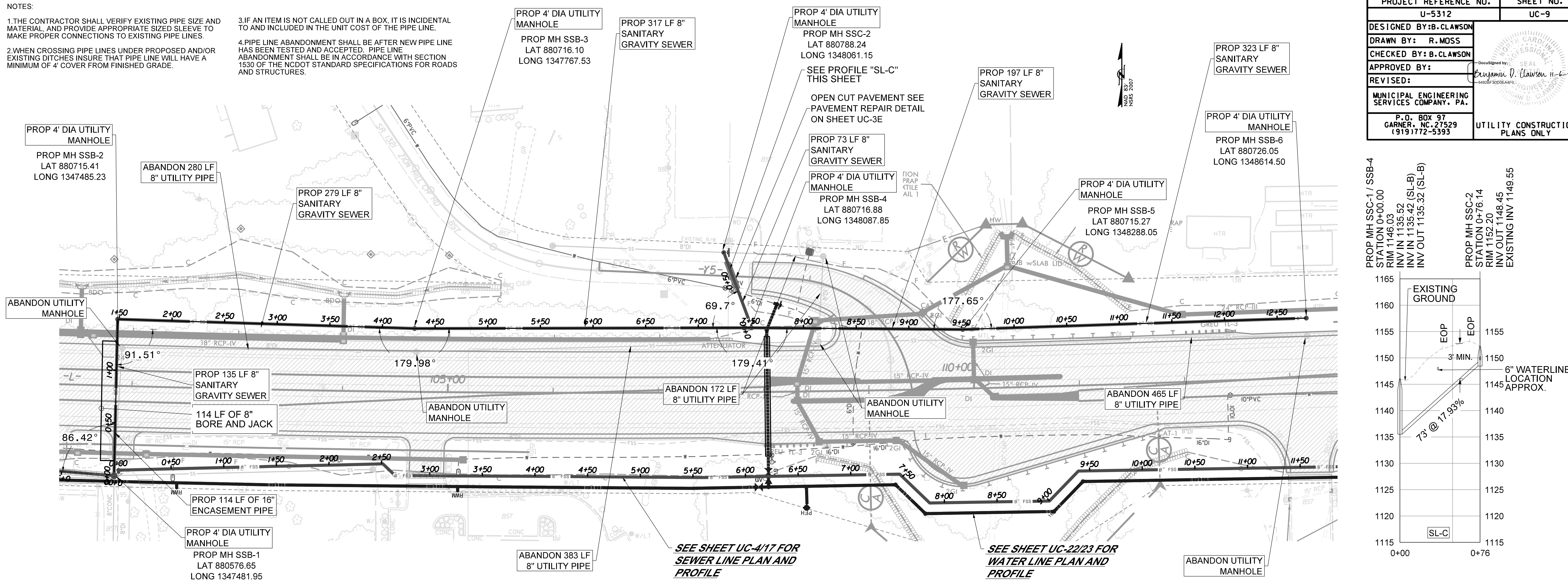
NOTES:

1. THE CONTRACTOR SHALL VERIFY EXISTING PIPE SIZE AND MATERIAL AND PROVIDE APPROPRIATE SIZED SLEEVE TO MAKE PROPER CONNECTIONS TO EXISTING PIPE LINES.

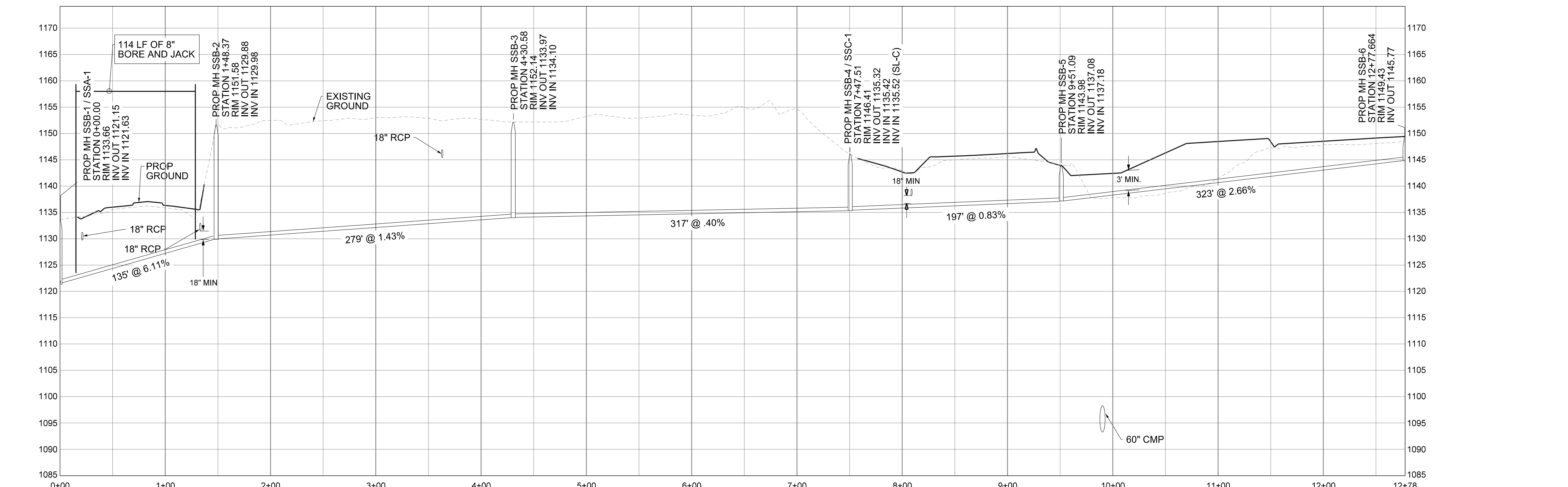
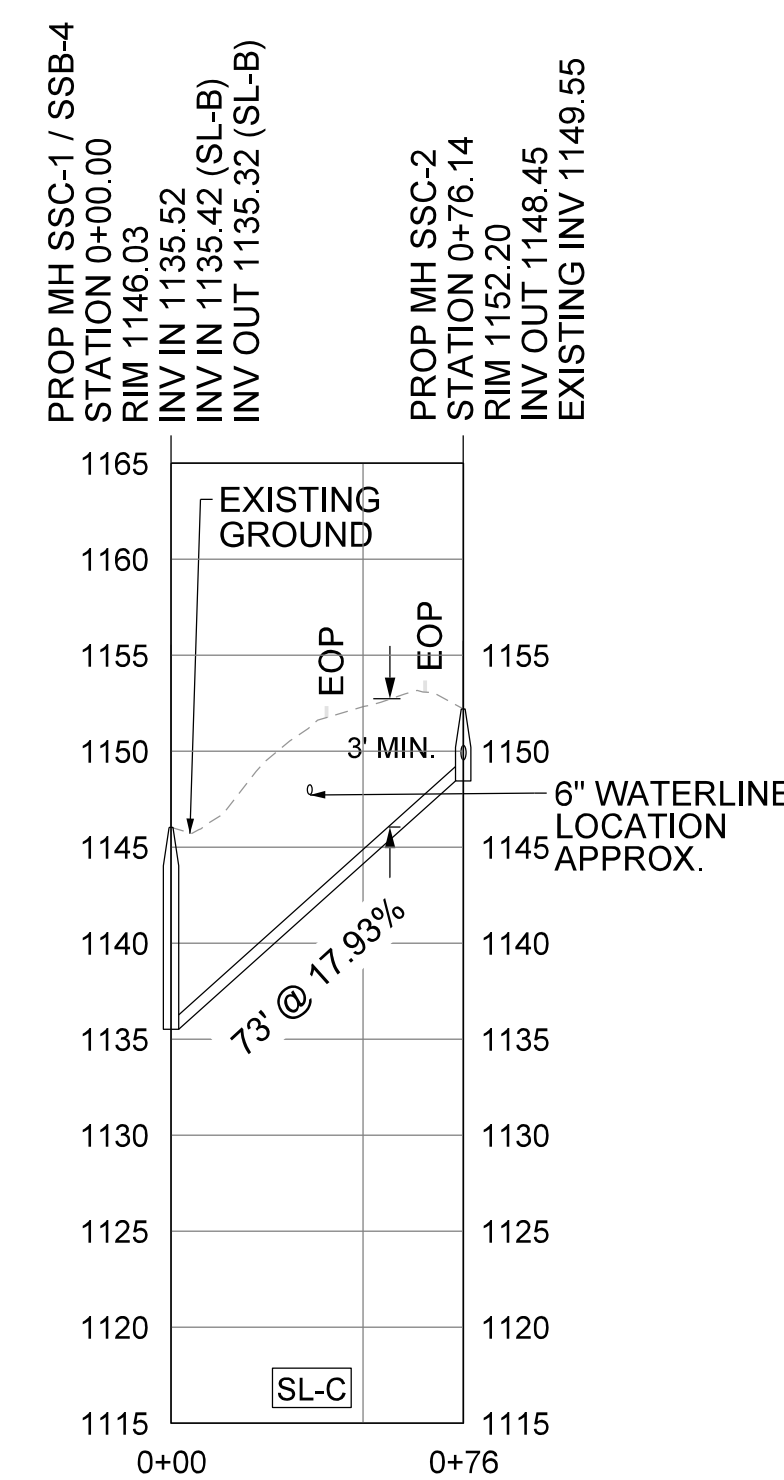
2. WHEN CROSSING PIPE LINES UNDER PROPOSED AND/OR EXISTING DITCHES INSURE THAT PIPE LINE WILL HAVE A MINIMUM OF 4' COVER FROM FINISHED GRADE.

3. IF AN ITEM IS NOT CALLED OUT IN A BOX, IT IS INCIDENTAL TO AND INCLUDED IN THE UNIT COST OF THE PIPE LINE.

4. PIPE LINE ABANDONMENT SHALL BE AFTER NEW PIPE LINE HAS BEEN TESTED AND ACCEPTED. PIPE LINE ABANDONMENT SHALL BE IN ACCORDANCE WITH SECTION 1539 OF THE NCDOT STANDARD SPECIFICATIONS FOR ROADS AND STRUCTURES.



PROJECT REFERENCE NO.	U-5312	SHEET NO.	UC-9
DESIGNED BY:	B. CLAWSON		
DRAWN BY:	R. MOSS		
CHECKED BY:	B. CLAWSON		
APPROVED BY:	B. CLAWSON		
REVISID:			
MUNICIPAL ENGINEERING SERVICES COMPANY, PA.	P.O. BOX 97 GARNER, NC 27529 19191772-5393	UTILITY CONSTRUCTION PLANS ONLY	



SEE SHEET UC-417 FOR SEWER LINE PLAN AND PROFILE

SEE SHEET UC-2223 FOR WATER LINE PLAN AND PROFILE