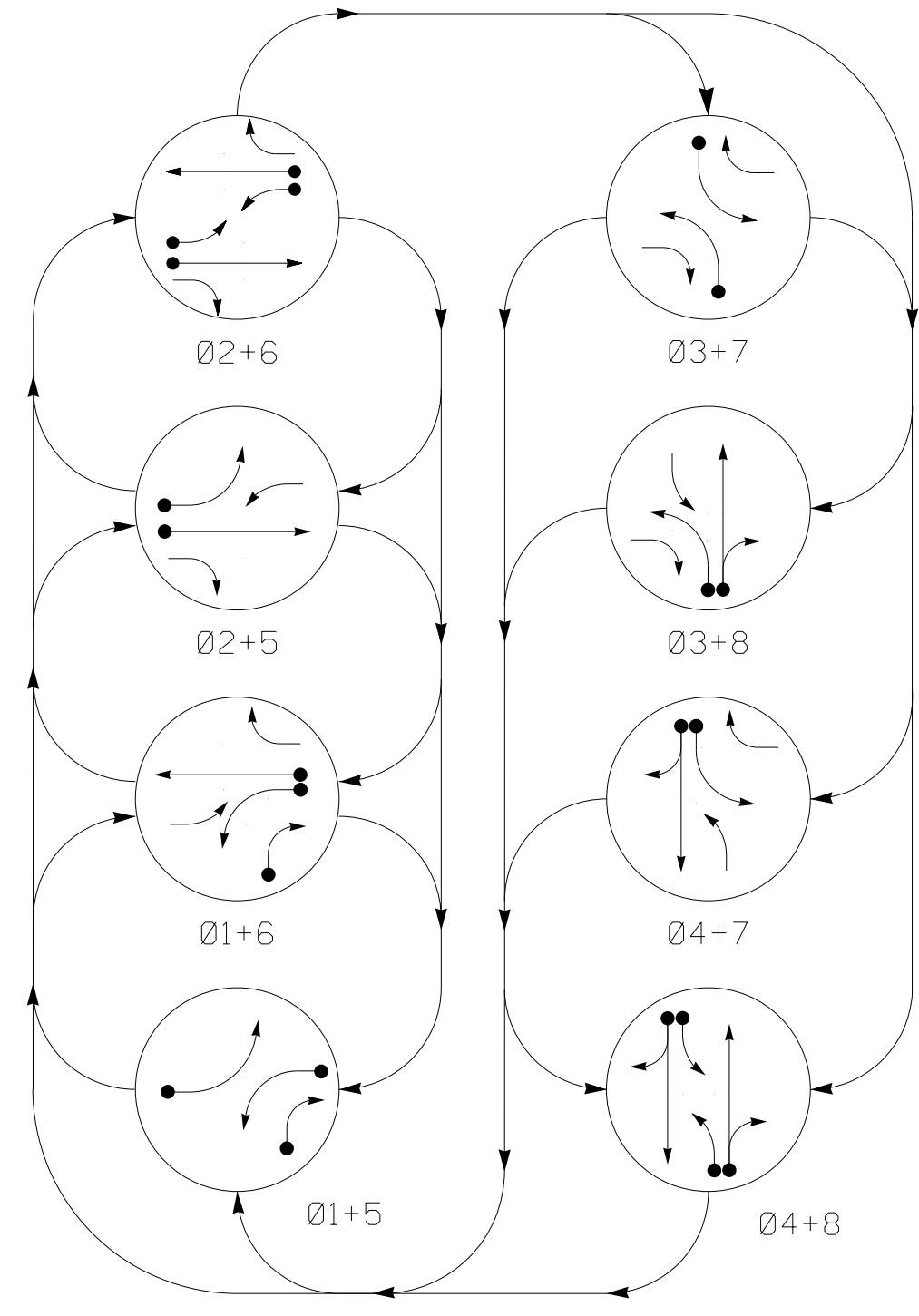
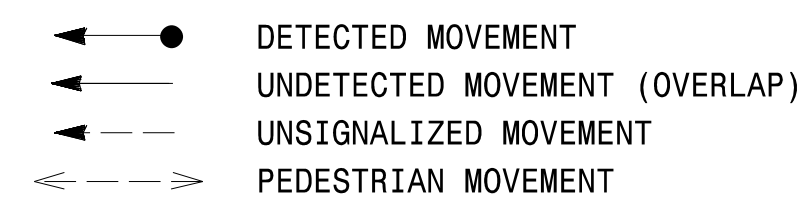


4/17/2023 14:40:22 PM \\v\h\g\p\proj\Rateigh\38621.03 NCDOT U-5312 Wilkes Co\NCDOT\Traffic\Signals\Design\Temporary Signal Design\1107771_sig_dsn_202305.dgn

PHASING DIAGRAM



PHASING DIAGRAM DETECTION LEGEND



SIGNAL FACE I.D.

All Heads L.E.D.

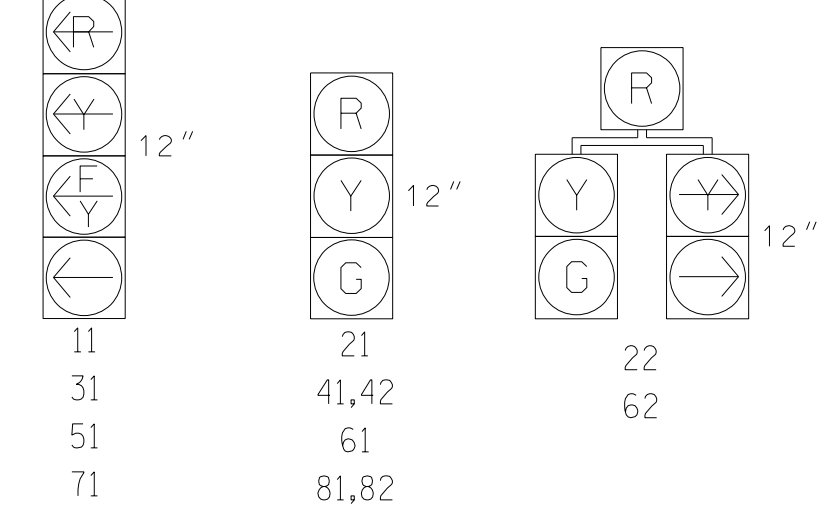


TABLE OF OPERATION

SIGNAL FACE	PHASE							
	Ø 1+5	Ø 1+6	Ø 2+5	Ø 2+6	Ø 3+7	Ø 3+8	Ø 4+7	Ø 4+8
11	←	←	←	←	←	←	←	←
21	R	R	G	G	R	R	R	Y
22	R	R	G	G	R	R	R	Y
31	R	R	R	R	←	←	←	←
41,42	R	R	R	R	R	G	G	R
51	←	←	←	←	←	←	←	←
61	R	G	R	G	R	R	R	Y
62	R	G	R	G	R	R	R	Y
71	R	R	R	R	←	←	←	←
81,82	R	R	R	R	R	G	G	R

MAXTIME DETECTOR INSTALLATION CHART

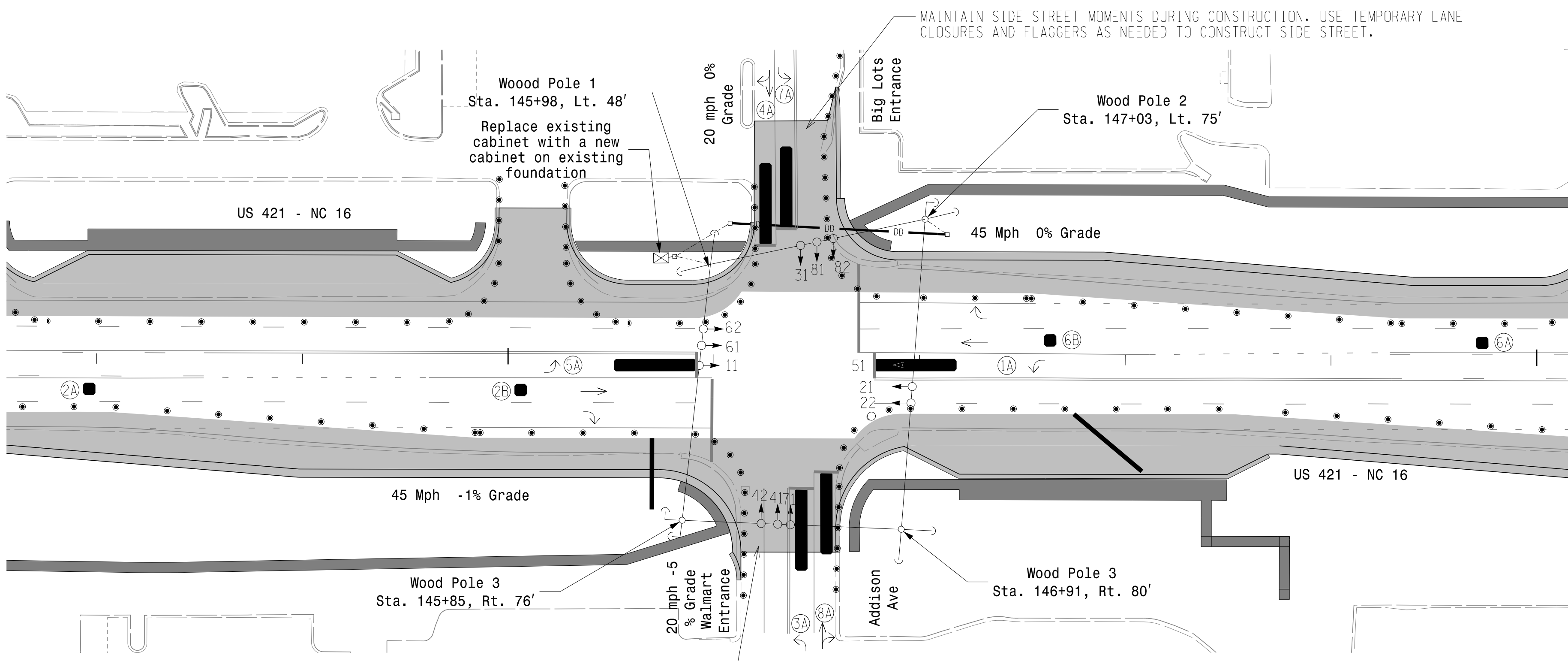
LOOP	DETECTOR		PROGRAMMING								
	SIZE (FT)	DISTANCE FROM STOPBAR (FT)	TURNS	NEW LOOP	CALL PHASE	DELAY TIME	EXTEND TIME	EXTEND INITIAL	ADDED INITIAL CALL	DELAY DURING GREEN	NEW CARD
1A	*	0	*	*	1	15.0	-	X	-	X	-
2A	*	300	*	*	2	-	1.6	X	-	X	-
2B	*	90	*	*	2	-	-	X	-	X	-
3A	*	0	*	*	3	15.0	-	X	-	X	-
4A	*	0	*	*	4	10.0	-	X	-	X	-
5A	*	0	*	*	5	15.0	-	X	-	X	-
6A	*	300	*	*	6	-	1.6	X	-	X	-
6B	*	90	*	*	6	-	-	X	-	X	-
7A	*	0	*	*	7	15.0	-	X	-	X	-
8A	*	0	*	*	8	10.0	-	X	-	X	-

*Video Detection Zone

8 Phase Fully Actuated (Isolated)

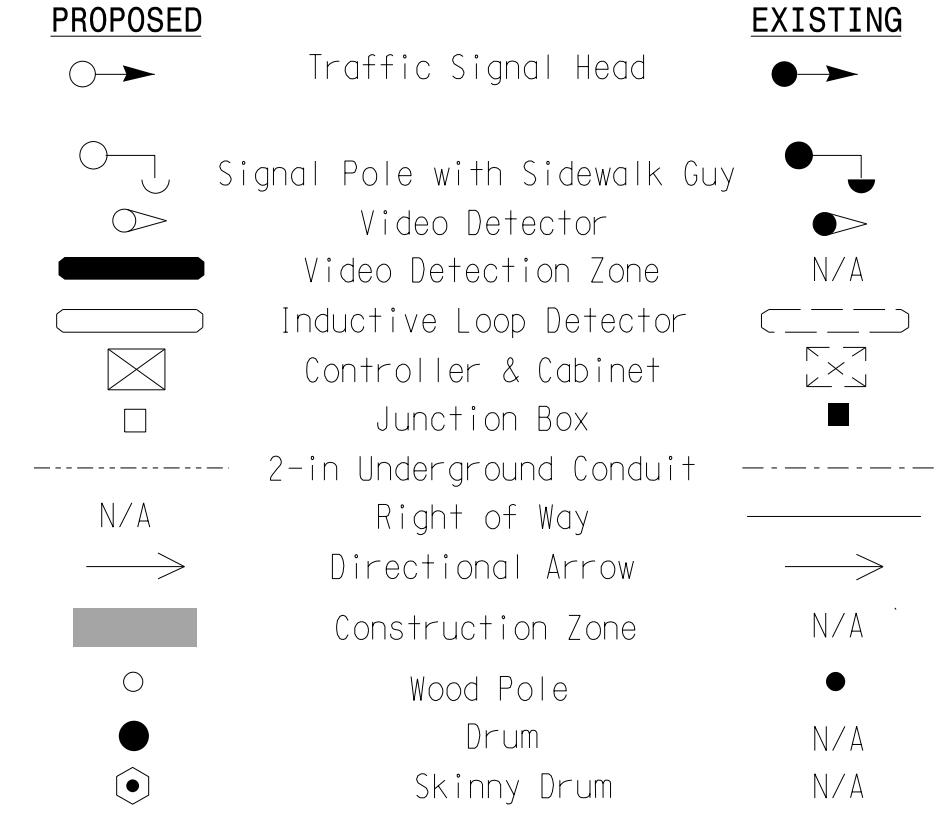
NOTES

1. Refer to "Roadway Standard Drawings NCDOT" dated January 2018 and "Standard Specifications for Roads and Structures" dated January 2018.
2. Do not program signal for late night operation unless otherwise directed by the Engineer.
3. Set all detector units to presence mode.
4. This intersection uses video detection. Install detectors according to the manufacturer's instructions to achieve the desired detection.
5. Locate new cabinet so as not to obstruct sight distance of vehicles turning right on red.
6. Refer to Pavement Marking Plans for proposed stop bar locations.



MAINTAIN SIDE STREET MOMENTS DURING CONSTRUCTION. USE TEMPORARY LANE CLOSURES AND FLAGGERS AS NEEDED TO CONSTRUCT SIDE STREET.

LEGEND



MAXTIME TIMING CHART

FEATURE	PHASE							
	1	2	3	4	5	6	7	8
Walk *	-	-	-	-	-	-	-	-
Ped Clear *	-	-	-	-	-	-	-	-
Min Green	7	12	7	7	7	12	7	7
Passage *	2.0	2.0	2.0	2.0	2.0	2.0	2.0	2.0
Max 1 *	15	45	15	20	15	45	15	20
Yellow Change	3.0	4.6	3.1	3.0	3.0	4.5	3.0	3.0
Red Clear	1.8	1.0	2.6	3.2	2.3	1.0	2.8	2.9
Added Initial *	-	-	-	-	-	-	-	-
Maximum Initial *	-	-	-	-	-	-	-	-
Time Before Reduction *	-	-	-	-	-	-	-	-
Time To Reduce *	-	-	-	-	-	-	-	-
Minimum Gap	-	-	-	-	-	-	-	-
Advance Walk	-	-	-	-	-	-	-	-
Non Lock Detector	X	-	X	X	X	-	X	X
Vehicle Recall	-	MIN RECALL	-	-	-	MIN RECALL	-	-
Dual Entry	-	-	-	X	-	-	-	X

* These values may be field adjusted. Do not adjust Min Green and Extension times for phases 2 and 6 lower than what is shown. Min Green for all other phases should not be lower than 4 seconds.

Signal Upgrade - Temporary Design 1(Phase 10)

Prepared For the Offices of:

US 421-NC 16 at Addison Ave/Walmart Entrance

Division 11 Wilkes County Wilkesboro

PLAN DATE: May 2023 REVIEWED BY: M.L. Stygles

PREPARED BY: S.R. Chiluka REVIEWED BY: J. Ma

REVISIONS: _____ INIT. DATE

SCALE: 1"=40'

5/24/2023

SIG. INVENTORY NO. 11-10771

