

PHASING DIAGRAM

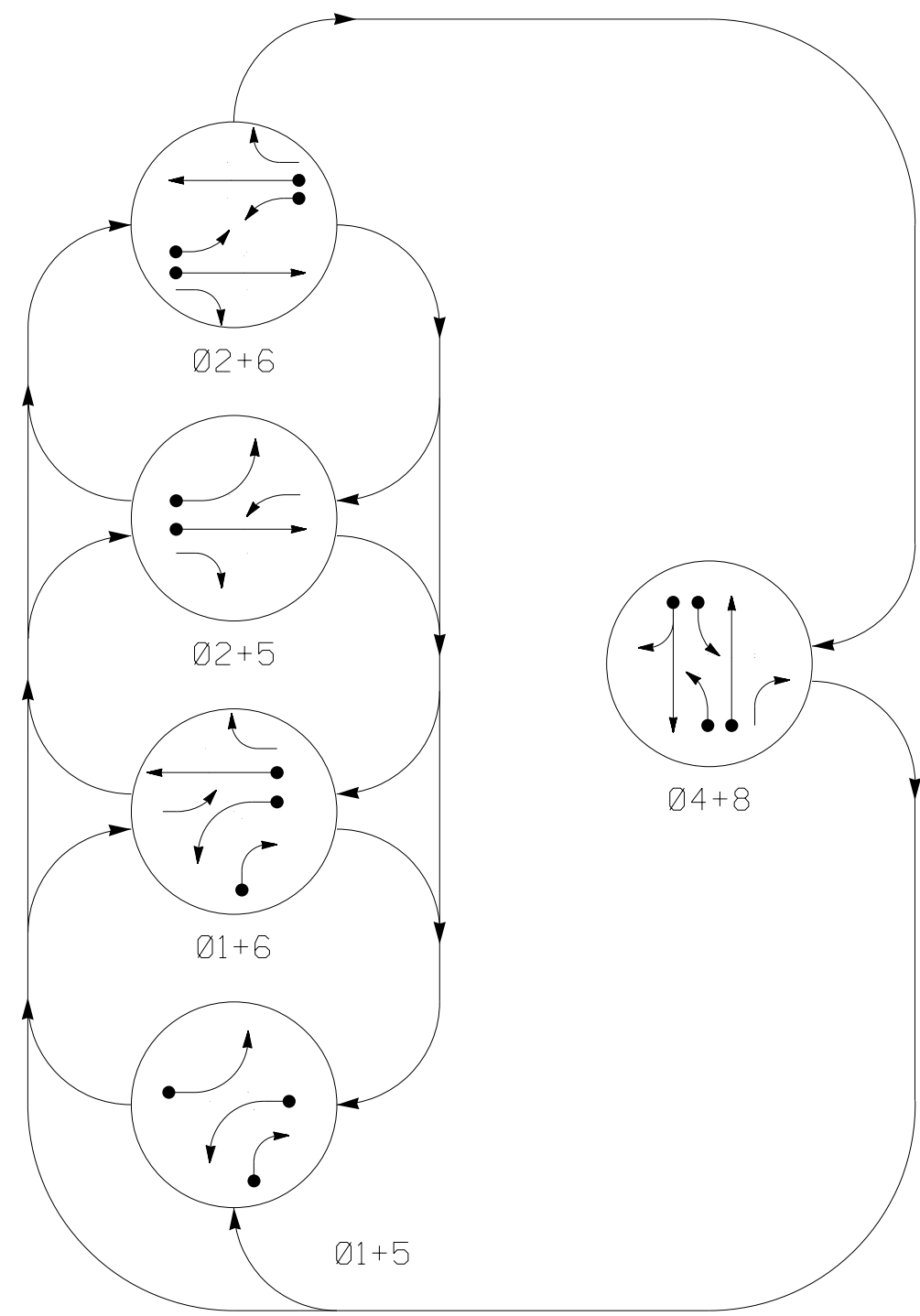
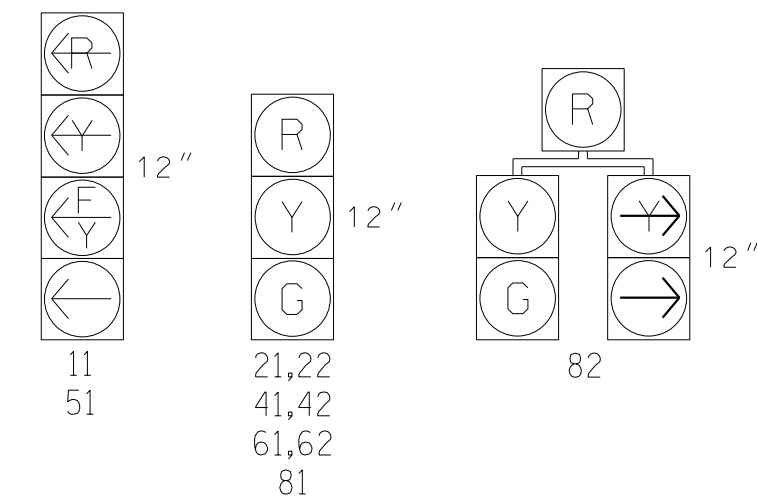


TABLE OF OPERATION

SIGNAL FACE	PHASE					
	01+5	01+6	02+5	02+6	04+8	FLOPS
11	←	←	←	←	←	←
21, 22	R	R	G	G	R	Y
41, 42	R	R	R	R	G	R
51	←	←	←	←	←	←
61, 62	R	G	R	G	R	Y
81	R	R	R	R	G	R
82	R	R	R	R	G	R

SIGNAL FACE I.D.

All Heads L.E.D.



MAXTIME DETECTOR INSTALLATION CHART

LOOP	SIZE (FT)	DISTANCE FROM STOPBAR (FT)	TURNS	NEW LOOP	PROGRAMMING							
					CALL PHASE	DELAY TIME	EXTEND TIME	EXTEND	ADDED INITIAL CALL	NEW CARD		
1A	*	0	*	*	1	15.0	-	X	-	X	-	*
1B	*	+5	*	*	1	15.0	-	X	-	X	-	*
2A	*	300	*	*	2	-	1.6	X	-	X	-	*
2B	*	90	*	*	2	-	-	X	-	X	-	*
4A	*	+5	*	*	4	3.0	-	X	-	X	-	*
4B	*	0	*	*	4	10.0	-	X	-	X	-	*
4C	*	0	*	*	4	15.0	-	X	-	X	-	*
5A	*	0	*	*	5	15.0	-	X	-	X	-	*
6A	*	300	*	*	6	-	1.6	X	-	X	-	*
6B	*	90	*	*	6	-	-	X	-	X	-	*
8A	*	+5	*	*	8	3.0	-	X	-	X	-	*
8B	*	+5	*	*	8	-	-	X	-	X	-	*

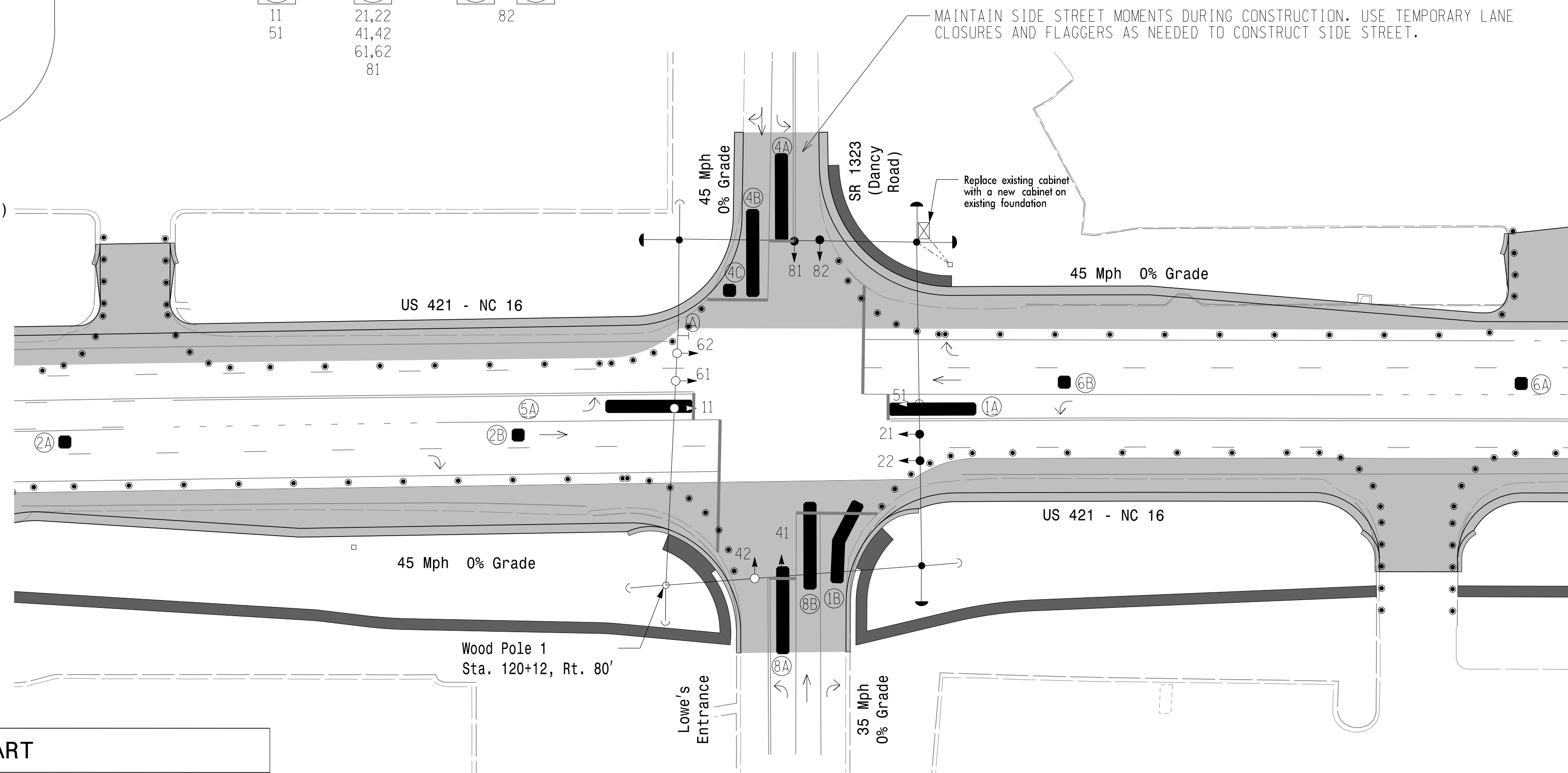
*Video Detection Zone

5 Phase Fully Actuated (Isolated) NOTES

1. Refer to "Roadway Standard Drawings NCDOT" dated January 2018 and "Standard Specifications for Roads and Structures" dated January 2018.
2. Do not program signal for late night operation unless otherwise directed by the Engineer.
3. Phase 1 and/or phase 5 may be lagged.
4. Set all detector units to presence mode.
5. Locate new cabinet so as not to obstruct sight distance of vehicles turning right on red.
6. Refer to Pavement Marking Plans for proposed stop bar locations.
7. Reposition existing signal heads as shown on this plan.

PHASING DIAGRAM DETECTION LEGEND

- ← ● DETECTED MOVEMENT
- ← ○ UNDETECTED MOVEMENT (OVERLAP)
- ← ○ UNSIGNALIZED MOVEMENT
- ← ○ PEDESTRIAN MOVEMENT



LEGEND

- | PROPOSED | EXISTING |
|-----------------------------------|-----------------------------------|
| ○ → Traffic Signal Head | ● → Traffic Signal Head |
| ○ → Signal Pole with Guy | ● → Signal Pole with Guy |
| ○ → Signal Pole with Sidewalk Guy | ● → Signal Pole with Sidewalk Guy |
| ○ → Video Detector | ● → Video Detector |
| ▬ Video Detection Zone | N/A |
| ▬ Inductive Loop Detector | ▬ Inductive Loop Detector |
| □ Controller & Cabinet | □ Controller & Cabinet |
| □ Junction Box | □ Junction Box |
| --- 2-in Underground Conduit | --- 2-in Underground Conduit |
| N/A Right of Way | → Right of Way |
| → Directional Arrow | → Directional Arrow |
| ▬ Construction Zone | N/A |
| ○ Wood Pole | ● Wood Pole |
| Ⓜ Right Arrow "ONLY" Sign R3-5R | Ⓜ Right Arrow "ONLY" Sign R3-5R |
| ● Drum | N/A |
| ● Skinny Drum | N/A |

MAXTIME TIMING CHART

FEATURE	PHASE					
	1	2	4	5	6	8
Walk *	-	-	-	-	-	-
Ped Clear *	-	-	-	-	-	-
Min Green	7	12	7	7	12	7
Passage *	2.0	2.0	2.0	2.0	2.0	2.0
Max 1 *	25	60	20	15	60	20
Yellow Change	3.0	4.5	4.5	3.0	4.5	3.8
Red Clear	2.3	1.2	1.2	1.9	1.2	1.4
Added Initial *	-	-	-	-	-	-
Maximum Initial *	-	-	-	-	-	-
Time Before Reduction *	-	-	-	-	-	-
Time To Reduce *	-	-	-	-	-	-
Minimum Gap	-	-	-	-	-	-
Advance Walk	-	-	-	-	-	-
Non Lock Detector	X	-	X	X	-	-
Vehicle Recall	-	MIN RECALL	-	-	MIN RECALL	-
Dual Entry	-	-	X	-	-	X

* These values may be field adjusted. Do not adjust Min Green and Extension times for phases 2 and 6 lower than what is shown. Min Green for all other phases should not be lower than 4 seconds.

New Installation - Temporary Design 1 (Phase 8)

750 N. Greenfield Pkwy, Garner, NC 27529

US 421 - NC 16
at
SR 1323 (Dancy Road)/
Lowe's Entrance

Division 11 Wilkes County Wilkesboro

PLAN DATE: May 2023 REVIEWED BY: M.L. Stygles

PREPARED BY: S.R. Chiluka REVIEWED BY: J. Ma

DOCUMENT NOT CONSIDERED FINAL UNLESS ALL SIGNATURES COMPLETED

DATE: 5/24/2023