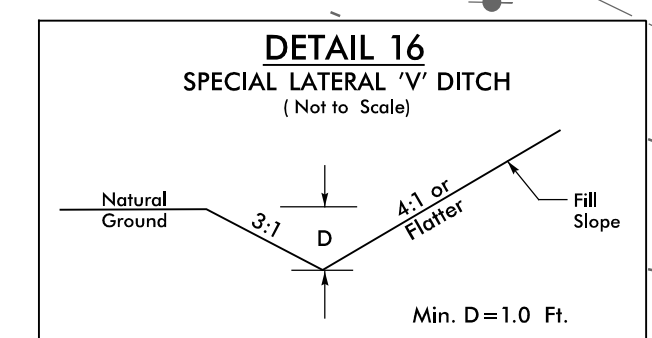


PROJECT REFERENCE NO. U-5312		SHEET NO. 14	
ROADWAY DESIGN ENGINEER		HYDRAULICS ENGINEER	
Documented by Jimmy Goodnight		Documented by Josh Dalton 7/12/2023	
DOCUMENT NOT CONSIDERED FINAL UNLESS ALL SIGNATURES COMPLETED			
Prepared by 		SUNGATE DESIGN GROUP, P.A. 	

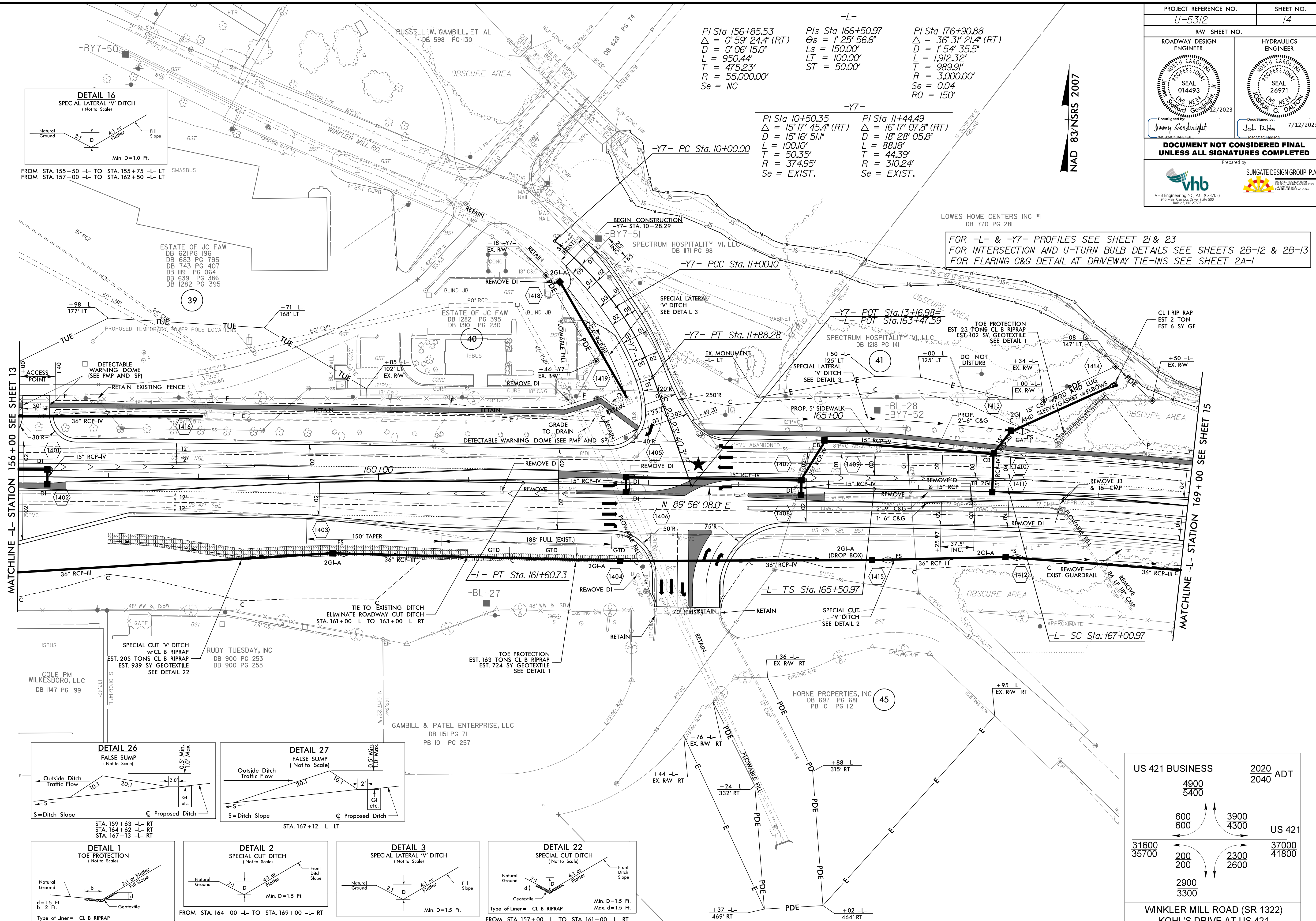


FROM STA. 155+50 -L- TO STA. 155+75 -L- LT
FROM STA. 157+00 -L- TO STA. 162+50 -L- LT

-L-
 PI Sta 156+85.53 Pls Sta 166+50.97 PI Sta 176+90.88
 $\Delta = 0' 59' 24.4''$ (RT) $\Delta s = 1' 25' 56.6''$ $\Delta = 36' 31' 21.4''$ (RT)
 $D = 0' 06' 15.0''$ $Ls = 150.00'$ $D = 1' 54' 35.5''$
 $L = 950.44'$ $LT = 100.00'$ $L = 1912.32'$
 $T = 475.23'$ $ST = 50.00'$ $T = 989.9'$
 $R = 55,000.00'$ $R = 3,000.00'$
 $Se = NC$ $Se = 0.04$
 $RO = 150'$

-Y7-
 PI Sta 10+50.35 PI Sta 11+44.49
 $\Delta = 15' 17' 45.4''$ (RT) $\Delta = 16' 17' 07.8''$ (RT)
 $D = 15' 16' 51.1''$ $D = 18' 28' 05.8''$
 $L = 100.10'$ $L = 88.18'$
 $T = 50.35'$ $T = 44.39'$
 $R = 374.95'$ $R = 310.24'$
 $Se = EXIST.$ $Se = EXIST.$

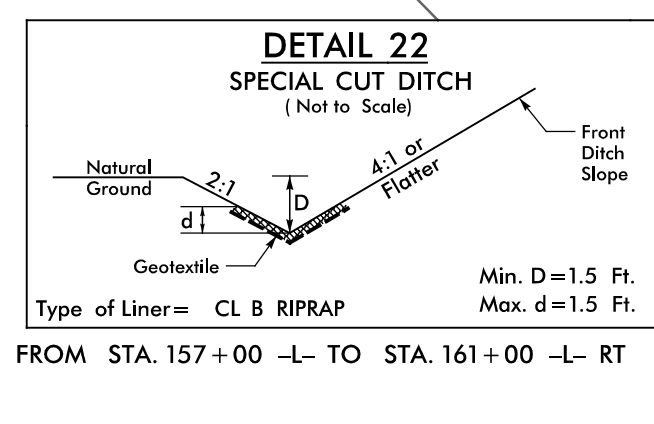
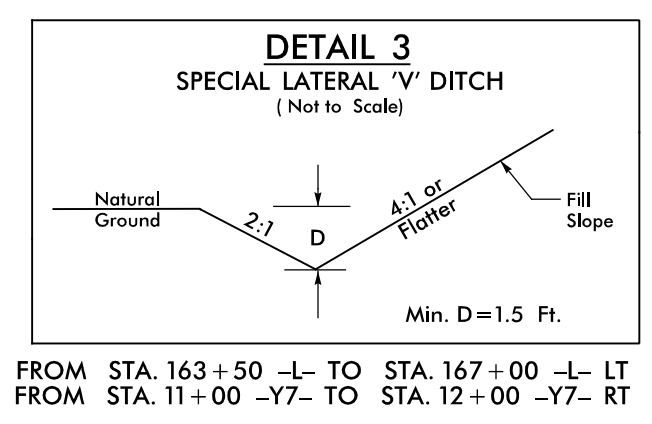
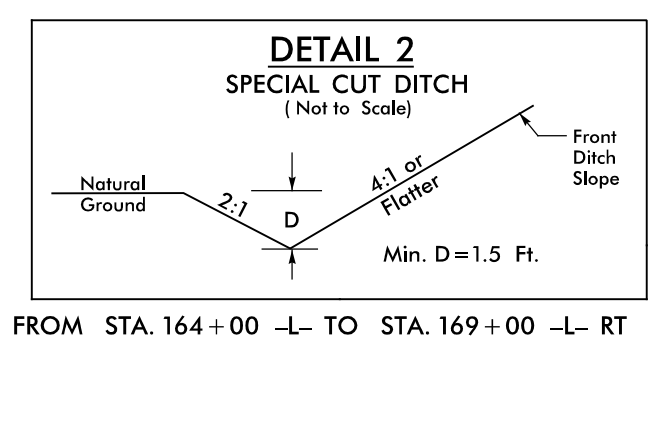
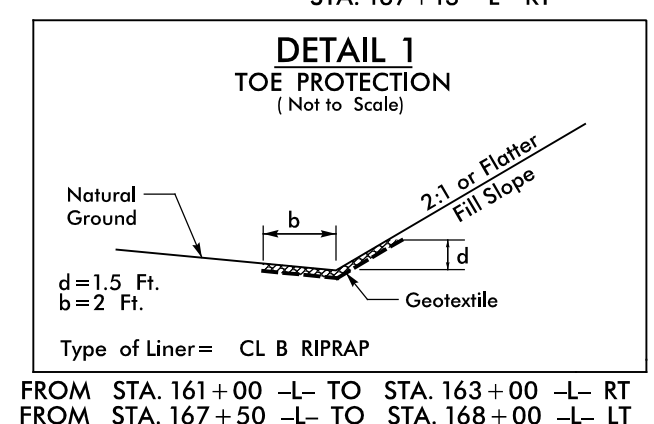
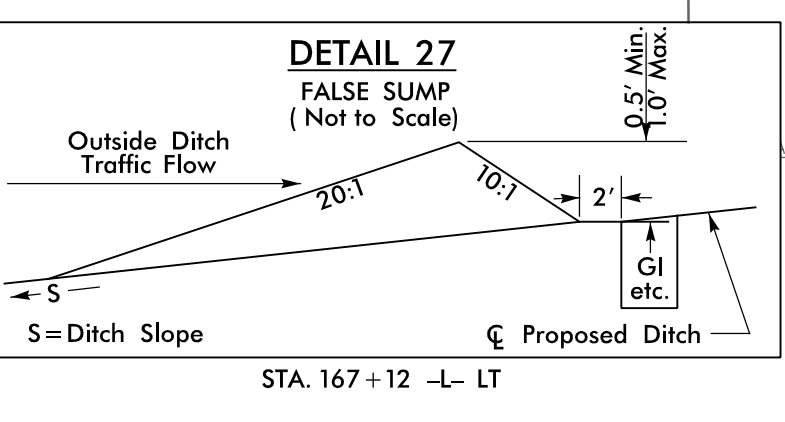
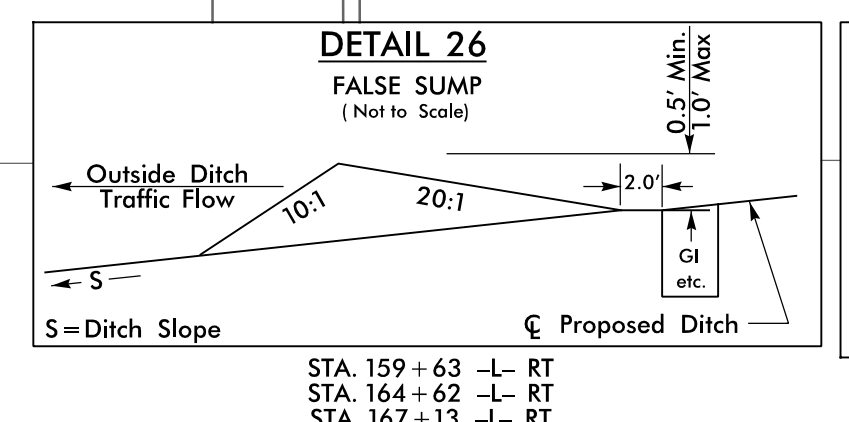
NAD 83/NSRS 2007



FOR -L- & -Y7- PROFILES SEE SHEET 21 & 23
 FOR INTERSECTION AND U-TURN BULB DETAILS SEE SHEETS 2B-12 & 2B-13
 FOR FLARING C&G DETAIL AT DRIVEWAY TIE-INS SEE SHEET 2A-1

MATCHLINE -L- STATION 156+00 SEE SHEET 13

MATCHLINE -L- STATION 169+00 SEE SHEET 15



US 421 BUSINESS		2020 ADT	
4900	5400	3900	2040
600	600	4300	37000
31600	35700	2300	41800
2900	3300	2600	

WINKLER MILL ROAD (SR 1322)
 KOHL'S DRIVE AT US 421

★ DENOTES PROPOSED SIGNALIZED INTERSECTION

1630/2023
 16302.dwg
 jgsh14.dgn