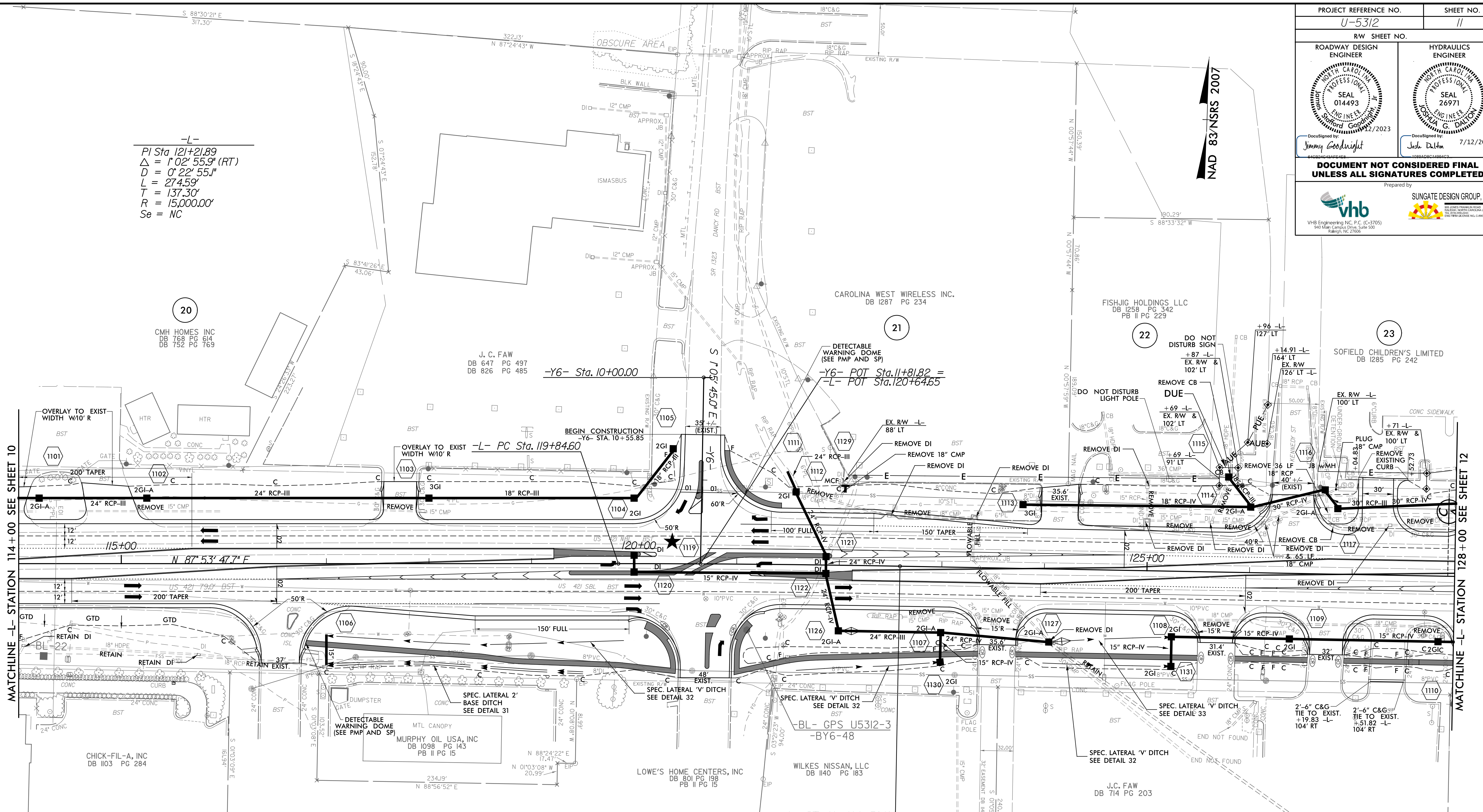
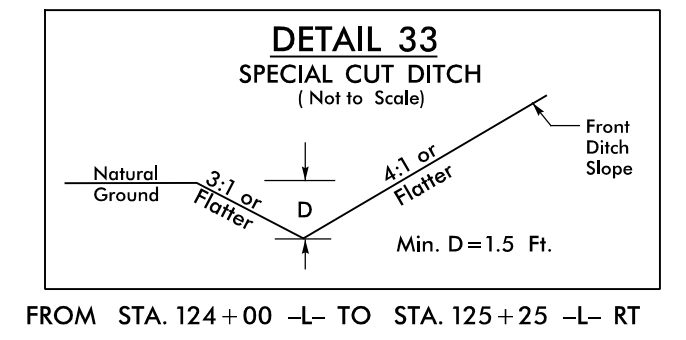
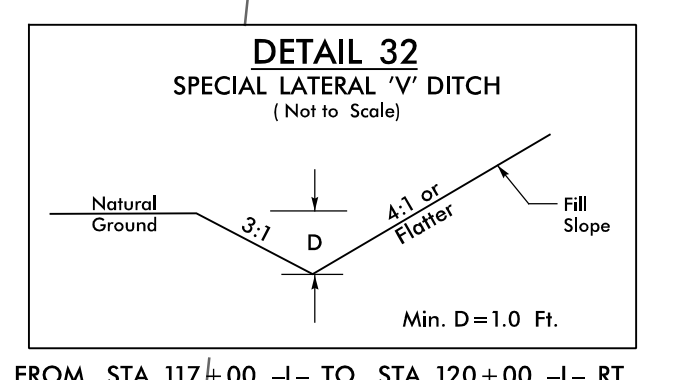
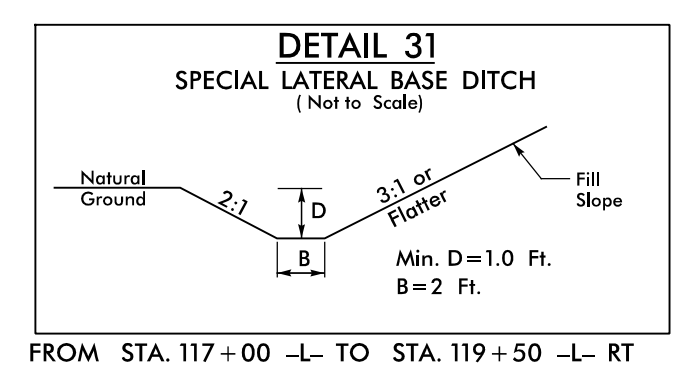
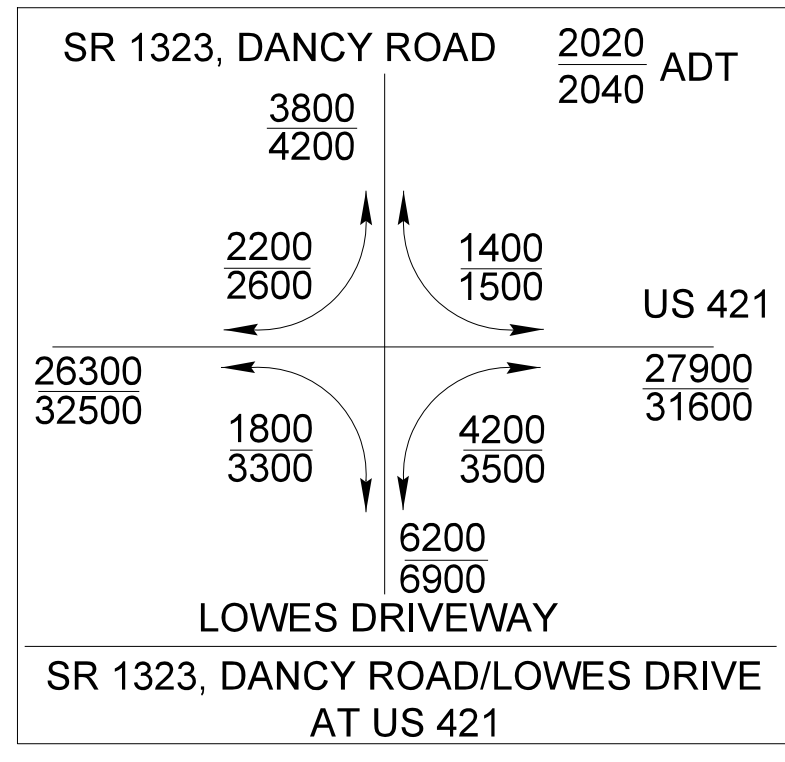


PROJECT REFERENCE NO. <b>U-5312</b>		SHEET NO. <b>11</b>	
RW SHEET NO.			
ROADWAY DESIGN ENGINEER		HYDRAULICS ENGINEER	
<p>DOCUMENT NOT CONSIDERED FINAL UNLESS ALL SIGNATURES COMPLETED</p>			
<p>Prepared by  </p>			



-L-  
 PI Sta. 121+21.89  
 $\Delta = 1^{\circ} 02' 55.9''$  (RT)  
 $D = 0^{\circ} 22' 55.1''$   
 $L = 274.59'$   
 $T = 137.30'$   
 $R = 15,000.00'$   
 $Se = NC$



FOR -L- & -Y6- PROFILES SEE SHEETS 20 & 23  
 FOR INTERSECTION DETAIL SEE SHEET 2B-8  
 FOR FLARING C&G DETAIL AT DRIVEWAY TIE-INS SEE SHEET 2A-1

ALL DRIVEWAY RADII ARE 10' UNLESS OTHERWISE NOTED.

★ DENOTES PROPOSED SIGNALIZED INTERSECTION

8.17.2023  
 F:\30\2023\16532\dwg\psh11.dgn  
 11/11/2023