

# BREVARD ROUNDABOUTS - ELECTRICAL

CITY OF BREVARD  
DOT PROJECT # R-5799

## SHEET INDEX

COV	COVER SHEET
E01	DEAVOR RD ELECTRICAL PLAN
E02	DEAVOR RD ELECTRICAL CONTINUED
E03	PISGAH RD ELECTRICAL
E04	PISGAH RD ELECTRICAL PLAN

## SCHEDULE OF VALUES

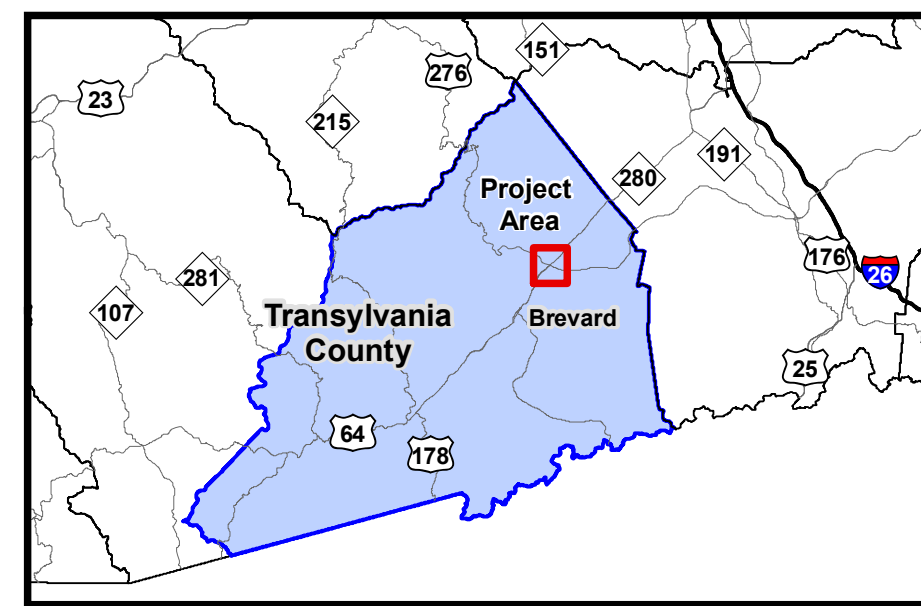
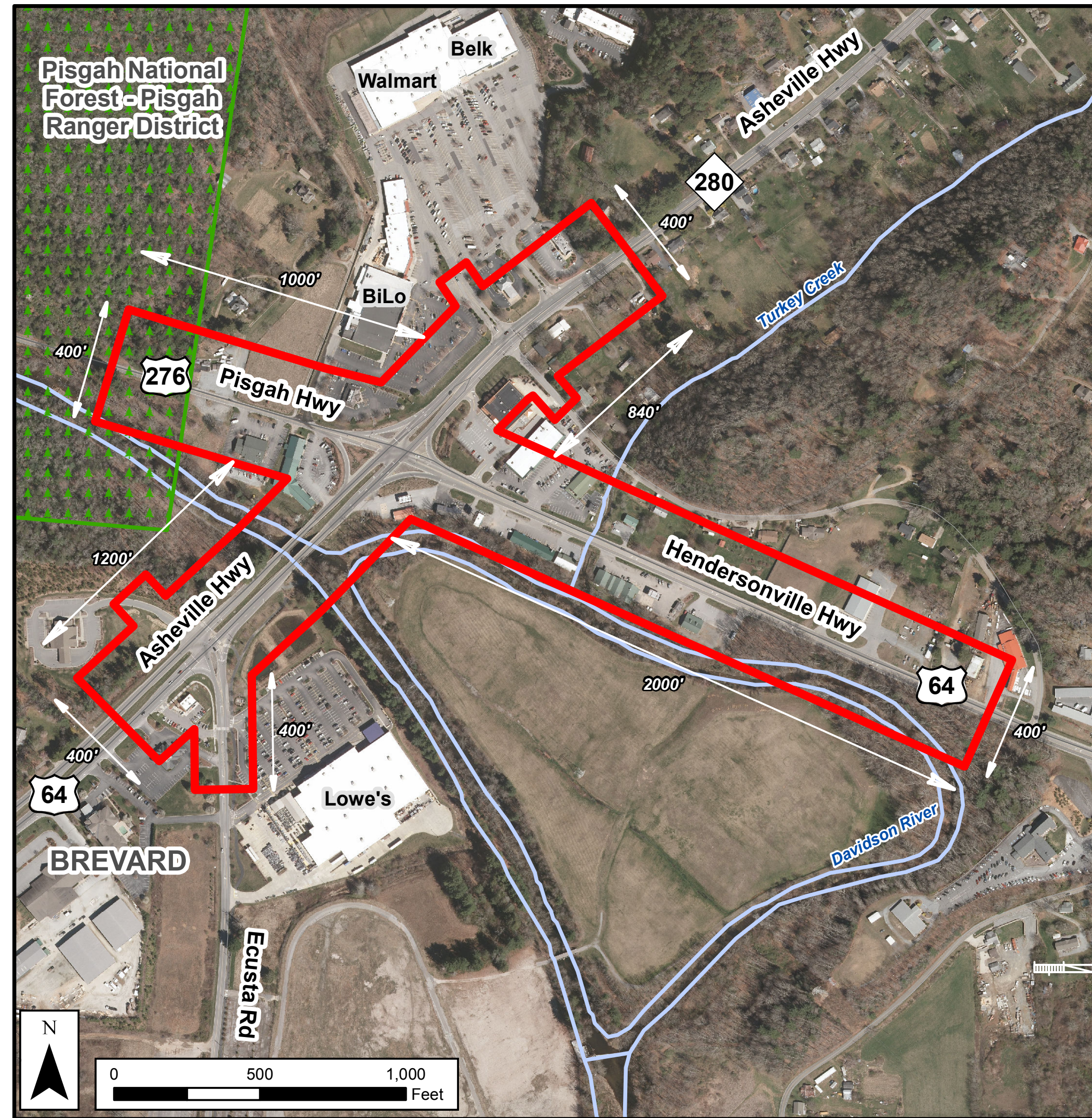
ELEVATION:	0 AMSL
DESIGN WIND SPEED:	115 MPH
SEISMIC DESIGN CATEGORY:	B
DESIGN FROST DEPTH:	24"
GROUND SNOW LOAD:	30 PSF
PRIMARY USE FLOOR LOAD:	LIVE LOAD: 40 PSF DEAD LOAD: 10 PSF
ROOF LOAD:	LIVE LOAD: 35 PSF DEAD LOAD: 15 PSF

## SCOPE OF WORK

PER CONTRACT BETWEEN TERESA BUCKWALTER AND IONCON:  
Provide the electrical sheets for the landscape level lighting in the 2 roundabouts. Mosaic Civic will provide proposed fixture lists and layout for the roundabouts and IONCON will be responsible for the conductor and conduit sizing from the user side of the meter to the individual fixtures.

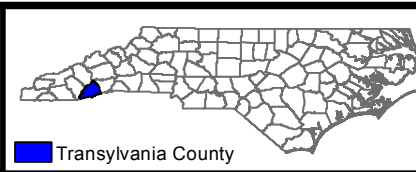
## GENERAL NOTES

- ALL CONSTRUCTION SHALL MEET 2018 NORTH CAROLINA STATE BUILDING CODE: RESIDENTIAL CODE.
- ALL HARDWARE AND FASTENERS CONTACTING PRESSURE TREATED MATERIAL SHALL BE APPROVED FOR USE WITH CORRESPONDING WOOD TREATMENT.
- ALL LUMBER CONTACTING CONCRETE SHALL BE PRESSURE TREATED.
- ALL WOOD CONNECTORS SHALL BE INSTALLED PER MANUFACTURER SPECIFICATIONS UNLESS NOTED OTHERWISE.
- CONTRACTOR TO FIELD VERIFY ALL DIMENSIONS. DRAWINGS REPRESENT TYPICAL CONDITIONS. AS-BUILT CONDITIONS MAY EXIST.
- ENGINEER NOT RESPONSIBLE FOR UN-COMPACTED FILL.
- FLASHING, COUNTER-FLASHING AND WATERPROOFING BY OTHERS.
- IONCON ENGINEERING IS ONLY RESPONSIBLE FOR THE STRUCTURAL ASPECTS AS REFERENCED HEREIN.



### Legend

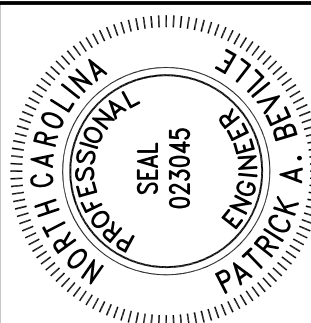
- R-5799 Study Area
- Pisgah National Forest
- Stream



**R-5799 Intersection Improvements**  
US 64 (Pisgah Hwy) / US 276 (Pisgah Hwy) /  
NC 280 (Asheville Hwy) Intersection

TIP No. R-5799  
Division: 14

**Figure: 1**  
Study Area  
Map



PATRICK A. BEVILLE PE, LEED AP  
IONCON, PLLC P-0820  
2654 HWY 105  
BOONE, NC 28607  
INFO@IONCON.COM



BREVARD ROUNDABOUTS - ELECTRICAL  
SITE ADDRESS: CITY OF BREVARD  
OWNER: TERESA BUCKWALTER  
PROJECT ADDRESS: 105 HWY 105  
(828) 719-9171 | TERESA@MOBACCIVIC.COM

COVER SHEET

QC	BY	DATE
BOD	-	###/##/##
DST	-	###/##/##
CNS	-	###/##/##
CDE	-	###/##/##
COM	-	###/##/##
DATE	5/9/2023	
SCALE	AS NOTED	
DRW	MEB	
EIT	QD	
JOB #	215003	

**COV**

PLOTTED ON: 5/9/2023



**ELECTRICAL NOTES:**

- ALL ELECTRICAL WORK SHALL BE PERFORMED IN ACCORDANCE WITH NATIONAL ELECTRICAL CODE AND LOCAL CODES BY LICENSED ELECTRICAL CONTRACTOR.
- ALL MATERIALS, DEVICES, APPLIANCES AND EQUIPMENT SHALL BE NEW AND LABEL LISTED BY AN APPROVED THIRD PARTY TESTING AGENCY APPROVED BY THE STATE.
- CONTRACTOR SHALL VERIFY ALL DIMENSIONS, ELEVATIONS AND SITE CONDITIONS PRIOR TO STARTING WORK. CONTACT ENGINEER, AS APPROPRIATE, IF CONFLICTING OR PROHIBITIVE CONDITIONS ARE ENCOUNTERED. UNDERGROUND UTILITIES EXIST AND MUST BE PROPERLY MARKED BY CONTRACTOR PRIOR TO EXCAVATION.
- ELECTRICAL CONTRACTOR TO PROVIDE SEPARATE NEUTRAL CONDUCTOR FOR EACH 120V CIRCUIT, AND INSULATED GROUND CONDUCTOR IN ALL CONDUIT RUNS.
- ELECTRICAL PLANS TO LOCATE EQUIPMENT AND FIXTURES ONLY. FINAL WIRE SIZING AND OVERCURRENT PROTECTION PER NEC REQUIREMENTS.
- FINAL CIRCUITS TO BE CLEARLY LABELED ON DISTRIBUTION PANEL BY CONTRACTOR.
- ALL RECEPTACLE OUTLETS IN WET AREAS TO BE PROTECTED BY GFCI CIRCUITS.
- ALL EXTERIOR 120V WIRING SHALL BE COPPER SINGLE WIRE CONDUCTORS IN CONDUIT, MINIMUM WIRE SIZING #12AWG. CONTRACTOR TO COORDINATE CONDUIT PLACEMENT AND RUNS WITH CONTRACTOR.
- COORDINATE ELECTRICAL SERVICE AND METER PANEL LOCATIONS WITH LOCAL UTILITY.
- ALL GFCI/WP RECEPTACLES TO HAVE IN-USE COVERS.
- ALL EXTERIOR 24V SHALL BE #8-2 DBR LOW VOLTAGE CABLE RATED FOR DIRECT BURIAL.

**NC ENERGY CODE: APPENDIX B ELECTRICAL SUMMARY 2018 NC ENERGY CONSERVATION CODE:**

METHOD OF COMPLIANCE:  
 PRESCRIPTIVE   
 PERFORMANCE   
 ENERGY COST BUDGET

**LIGHTING SCHEDULE:**

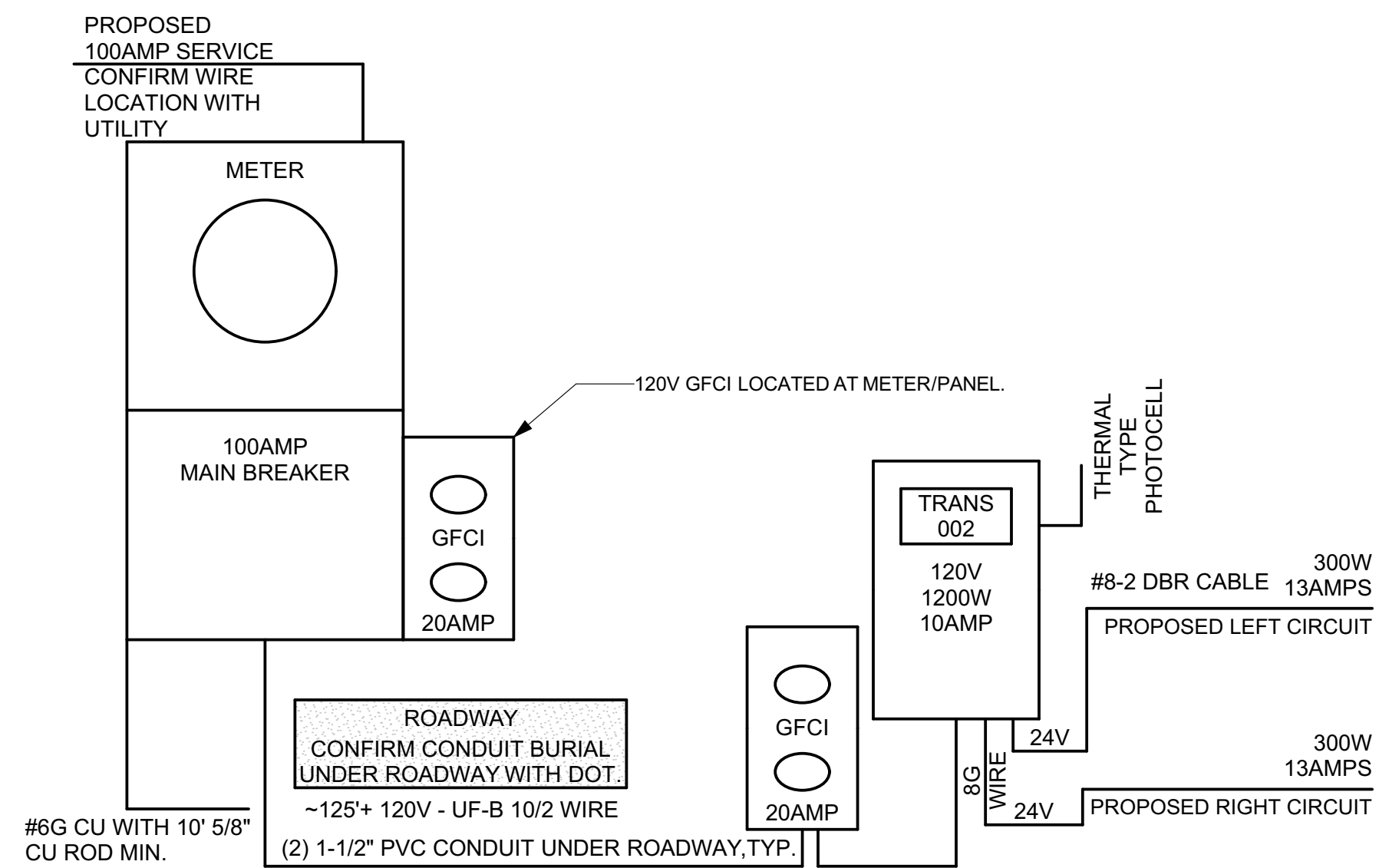
LAMP TYPE REQUIRED  
 NUMBER OF LAMPS IN FIXTURE SEE ELECTRICAL SCHEDULE  
 BALLAST TYPE  
 NUMBER OF BALLAST  
 TOTAL WATTAGE PER FIXTURE  
**TOTAL INTERIOR WATTAGESPECIFIED VS ALLOWED: N/A**

**EXTERIOR LUMENS SPECIFIED VS ALLOWED:**

NOTE: LIGHTING USED FOR HIGHLIGHTING PUBLIC MONUMENTS IS EXEMPT FROM THE REQUIREMENTS BELOW

**ELECTRICAL SCOPE:**

- INSTALL AND CONNECT CIRCUITS FOR LOW VOLTAGE LANDSCAPE LIGHTING TO NEW METER.



**NOTE:**

- ELECTRICIAN AND CONTRACTOR TO CONFIRM FINAL CIRCUIT OCP AND CONNECTIONS TO MAIN PANELS WITH ENGINEER PRIOR TO BEGINNING WORK.
- FINAL WIRE AND CONDUIT SIZING DETERMINED BY SITE CONDITIONS. CONTRACTOR TO COORDINATE WIRE RUNS AND SIZING PER NC 2017 NEC WITH ENGINEER PRIOR TO INSTALLATION.
- 24V LANDSCAPE LIGHTING TO USE #8-2 DBR CABLE OR EQUAL IN 1/2" NM LIQUID TIGHT CONDUIT. MAX 50FT PER CIRCUIT FOR 100FT TOTAL. CABLE GLANDS REQUIRED WHERE WIRE LEAVES CONDUIT TO FIXTURE.
- (2) 1-1/2" PVC CONDUIT UNDER ROADWAY. CONFIRM BURIAL DEPTH WITH DOT. APPROX 125FT LENGTH. (2) 20AMP 120V CIRCUITS PULLED TO GFCI OUTLETS WITH WET-RATED IN-USE COVERS. ATTACH TO 4X4 PT 3'-0" MIN EMBED DEPTH. MAX HEIGHT 3' ABOVE GRADE. PAINT SHERWIN WILLIAMS SUPERDECK STAIN, SEMI TRANSPARENT, COLOR: SW 3 REDWOOD. LOW VOLTAGE TRANSFORMER TO ATTACH TO OPPOSITE SIDE OF 4X4.

**1 UTILITY & MAIN SERVICE PANEL**

**PANEL SCHEDULE: M 1-PROPOSED**

**MAIN PANEL: EATON MODEL #MBT48B200BTS MAIN**

120/240 VOLTS 1-PHASE 3-WIRE 200-AMP MAIN 10,000AIC

CKT	BRK	WIRE	DESC	BUS A		BUS B		DESC	WIRE	BRK	CKT
				LOAD 1 (VA)	LOAD 2 (VA)	LOAD 1 (VA)	LOAD 2 (VA)				
1	20	10	GFCI RECEPT	1200	180	GFCI RECEPT	12	20	2		
3			SPARE	000	000	SPARE			4		

- NOTE:
- NEW PANEL TO UTILIZE 100AMP MAIN BREAKER IN METER PANEL. MAIN OCP SIZING AND CIRCUIT WIRE SIZING TO BE AS PER NEC AND CONFIRMED WITH ENGINEER PRIOR TO INSTALLATION.
  - FINAL SIZING OF MAIN PANEL OCP TO BE CONFIRMED PER NEC ON SITE.

COMMENTS:  
 -ELECTRICAL CONTRACTOR TO CONFIRM EQUIP WIRE RUNS, SIZING, AND OVERCURRENT PROTECTION PER NEC WITH ENGINEER.  
 -LOADS ADJUSTED- LIGHTS 125%, PUMP MOTOR- 125%, OTHER 100%

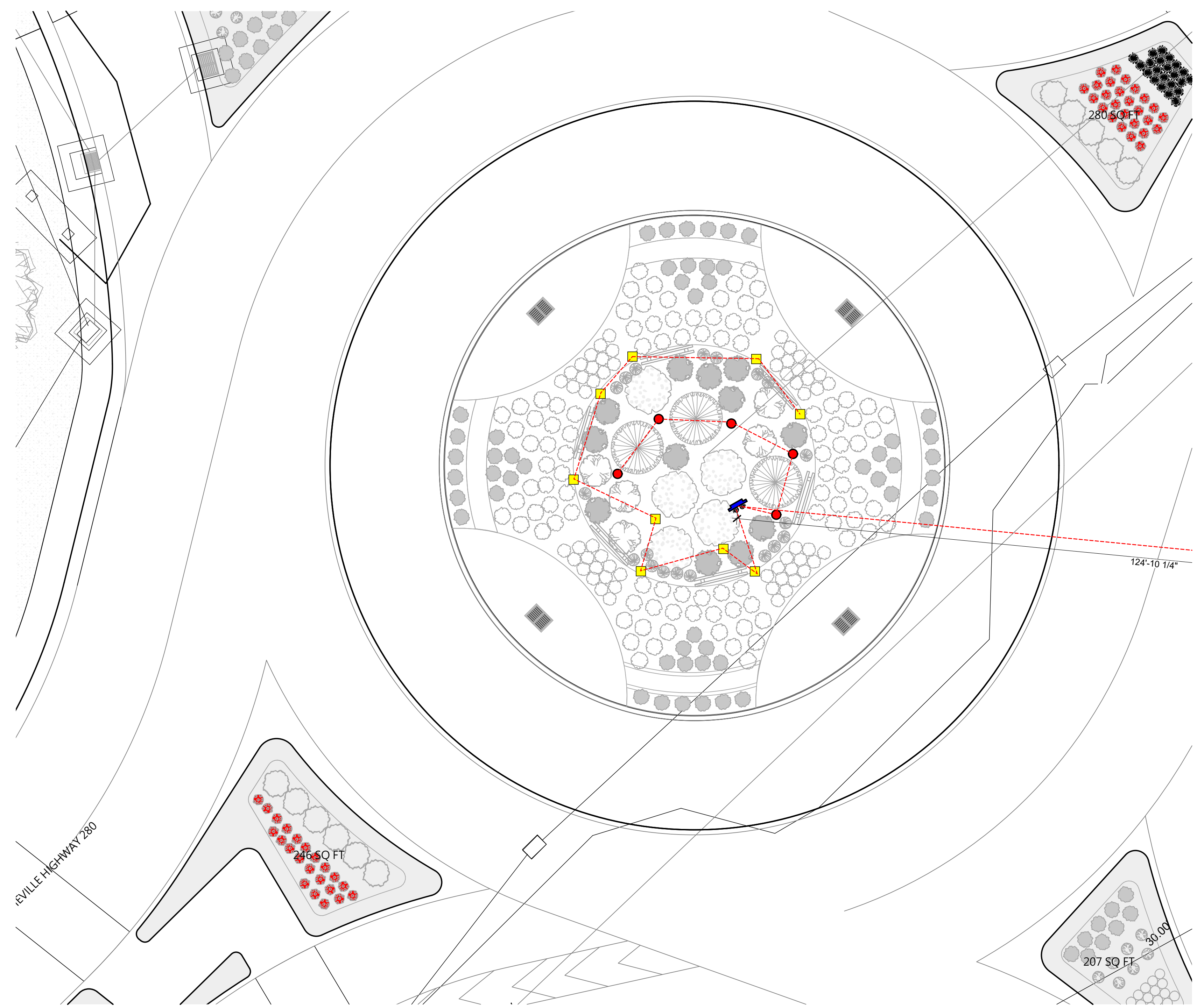
TTL CONNECTED KVA: 1.4  
 TTL DEMAND KVA: 1.2  
 TTL DEMAND AMPS: 5

ELECTRICAL SCHEDULE						
KEY	ITEM DESC	QUANTITY	MODEL #	SPECIFICATION	WATTAGE	VOLTAGE
[Yellow Box]	ELECTRICAL	0	CIWL6	WASH LIGHTS 20 LIGHT LEVELS W/ DIMMER	24V	
[GFCI Symbol]	GFCI	2	COOPER TRAFGF15 OR EQUAL WITH #1991 HORIZONTAL OR #4966 VERTICAL WEATHERPROOF HOUSING	20 AMP	120V	
[Red Circle]	LIGHT 01	5	CAST (CCGL25036B)	36° BEAM ANGLE	35 WATT HALOGEN EQUI.	24V
[Yellow Circle]	LIGHT 02	0	CAST (CCSL18336B)	36° BEAM ANGLE		24V
[Yellow Square]	LIGHT 03	9	CAST LED MINI WASH (CWL6LED1)	120° BEAM ANGLE		24V
[Meter Symbol]	METER	1	EATON MODEL #MBT48B400BTS MAIN	200AMP 1PH	120V/240V	
[Transformer Symbol]	TRANS	1	CAST PERIMETER 600W X 1200W DC LIGHTING TRANSFORMERS	36° BEAM ANGLE		24V
[PhotoCell Symbol]	PHOTOCELL	1	INTERMATIC ELEC-EK4236S	6IN LEAD LENGTH	UP TO 1,650W	120/208/240/277 V

**2 ELECTRICAL SCHEDULE DEVOUR ROAD**

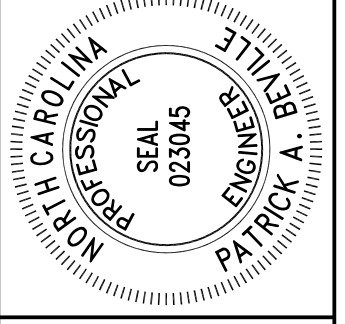
SCALE: 1:1.35

NOTE: EXACT CONDUIT LENGTHS TO BE CONFIRMED WITH DOT GRADING PLAN AND UTILITY METER LOCATION.  
 1. APPROXIMATELY (2) 125' 1-1/2" PVC CONDUIT UNDER ROADWAY. ONE CONDUIT EMPTY AND CAPPED FOR REPAIR/ADDITIONAL FUTURE CIRCUITS.  
 2. APPROXIMATELY 100' 1" PVC CONDUIT FOR LOW VOLTAGE LIGHTING WIRE PROTECTION WITHIN LANDSCAPING AREA.

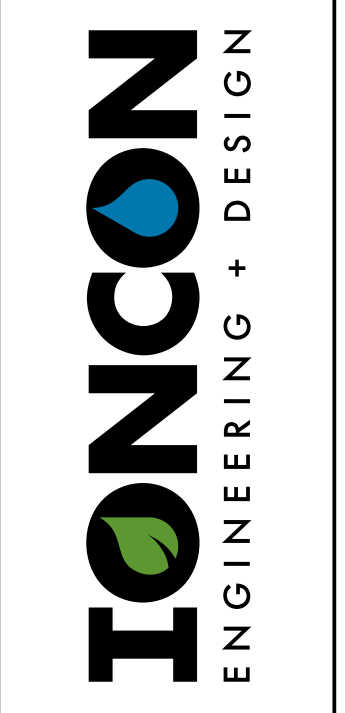


**3 DEAVOR RD ROUNDABOUT ELECTRICAL PLAN**

1" = 10'



PATRICK A. BEVILLE PE, LEED AP  
 IONCON, PLLC P-0820  
 2654 HWY 105  
 BOONE, NC 28607  
 INFO@IONCON.COM



BREVARD ROUNDABOUTS - ELECTRICAL  
 SITE ADDRESS: CITY OF BREVARD  
 OWNER: TERESA BUCKWALTER  
 PROJECT: BREVARD ROUNDABOUTS  
 (828) 719-9177 | TERESA@IONCON.COM

DEAVOR RD ELECTRICAL PLAN

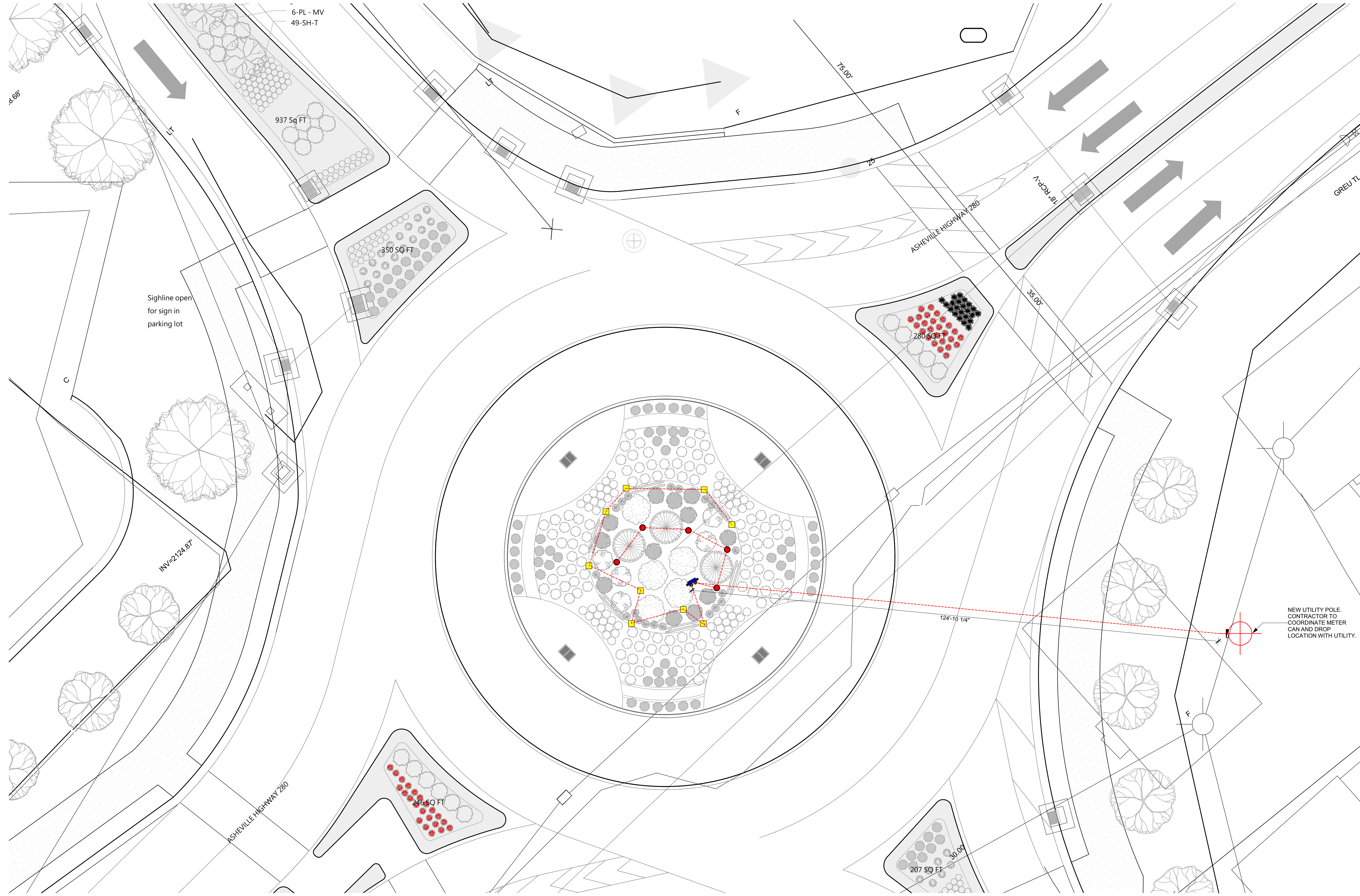
QC	BY	DATE
BOD	-	###/##/##
DST	-	###/##/##
CNS	-	###/##/##
CDE	-	###/##/##
COM	-	###/##/##

DATE: 5/9/2023  
 SCALE: AS NOTED  
 DRW: MEB  
 EIT: QD  
 JOB #: 215003

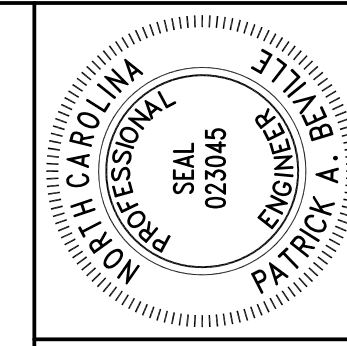
**E01**

PLOTTED ON: 5/9/2023

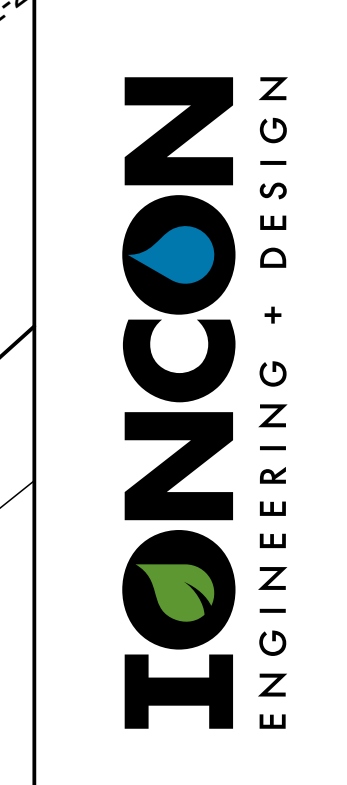




1 DEAVOR RD ROUNDABOUT ELECTRICAL PLAN  
1" = 10'



PATRICK A. BEVILLE PE, LEED AP  
IONCON, PLLC P-0820  
2654 HWY 105  
BOONE, NC 28607  
INFO@IONCON.COM



BREVIARD ROUNDABOUTS - ELECTRICAL  
SITE ADDRESS: CITY OF BREVIARD  
OWNER: TERESA BUCKWALTER  
10221 W. WINDY CREEK RD  
GAINESVILLE, FL 32609  
(352) 719-9177 | TERESA@IONCON.COM

DEAVOR RD ELECTRICAL CONTINUED

QC	BY	DATE
BOD	-	###/##/##
DST	-	###/##/##
CNS	-	###/##/##
CDE	-	###/##/##
COM	-	###/##/##

DATE	5/9/2023
SCALE	AS NOTED
DRW	MEB
EIT	QD
JOB #	215003

E02

COPYRIGHT IONCON, PLLC. THESE DRAWINGS ARE INTENDED FOR A SINGLE USE ONLY AT THE ADDRESS SPECIFIED HEREIN. DISCLAIMER: THESE DRAWINGS ARE MADE ON A BEST EFFORTS BASIS AND INTEND TO REPRESENT ACCURATE FIELD CONDITIONS. CONTRACTOR INSTALLER IS RESPONSIBLE FOR VERIFYING ACCURACY AND FOR FINAL ASSEMBLY, FIT AND FINISH.



- ELECTRICAL NOTES:**
- ALL ELECTRICAL WORK SHALL BE PERFORMED IN ACCORDANCE WITH NATIONAL ELECTRICAL CODE AND LOCAL CODES BY LICENSED ELECTRICAL CONTRACTOR.
  - ALL MATERIALS, DEVICES, APPLIANCES AND EQUIPMENT SHALL BE NEW AND LABEL LISTED BY AN APPROVED THIRD PARTY TESTING AGENCY APPROVED BY THE STATE.
  - CONTRACTOR SHALL VERIFY ALL DIMENSIONS, ELEVATIONS AND SITE CONDITIONS PRIOR TO STARTING WORK. CONTACT ENGINEER, AS APPROPRIATE, IF CONFLICTING OR PROHIBITIVE CONDITIONS ARE ENCOUNTERED. UNDERGROUND UTILITIES EXIST AND MUST BE PROPERLY MARKED BY CONTRACTOR PRIOR TO EXCAVATION.
  - ELECTRICAL CONTRACTOR TO PROVIDE SEPARATE NEUTRAL CONDUCTOR FOR EACH 120V CIRCUIT, AND INSULATED GROUND CONDUCTOR IN ALL CONDUIT RUNS.
  - ELECTRICAL PLANS TO LOCATE EQUIPMENT AND FIXTURES ONLY. FINAL WIRE SIZING AND OVERCURRENT PROTECTION PER NEC REQUIREMENTS.
  - FINAL CIRCUITS TO BE CLEARLY LABELED ON DISTRIBUTION PANEL BY CONTRACTOR.
  - ALL RECEPTACLE OUTLETS IN WET AREAS TO BE PROTECTED BY GFCI CIRCUITS.
  - ALL EXTERIOR 120V WIRING SHALL BE COPPER SINGLE WIRE CONDUCTORS IN CONDUIT, MINIMUM WIRE SIZING #12AWG. CONTRACTOR TO COORDINATE CONDUIT PLACEMENT AND RUNS WITH CONTRACTOR.
  - COORDINATE ELECTRICAL SERVICE AND METER PANEL LOCATIONS WITH LOCAL UTILITY.
  - ALL GFCI/WP RECEPTACLES TO HAVE IN-USE COVERS.
  - ALL EXTERIOR 24V SHALL BE #8-2 DBR LOW VOLTAGE CABLE RATED FOR DIRECT BURIAL.

**NC ENERGY CODE: APPENDIX B ELECTRICAL SUMMARY 2018 NC ENERGY CONSERVATION CODE:**

**METHOD OF COMPLIANCE:**

- PRESCRIPTIVE   
 PERFORMANCE   
 ENERGY COST BUDGET

**LIGHTING SCHEDULE:**

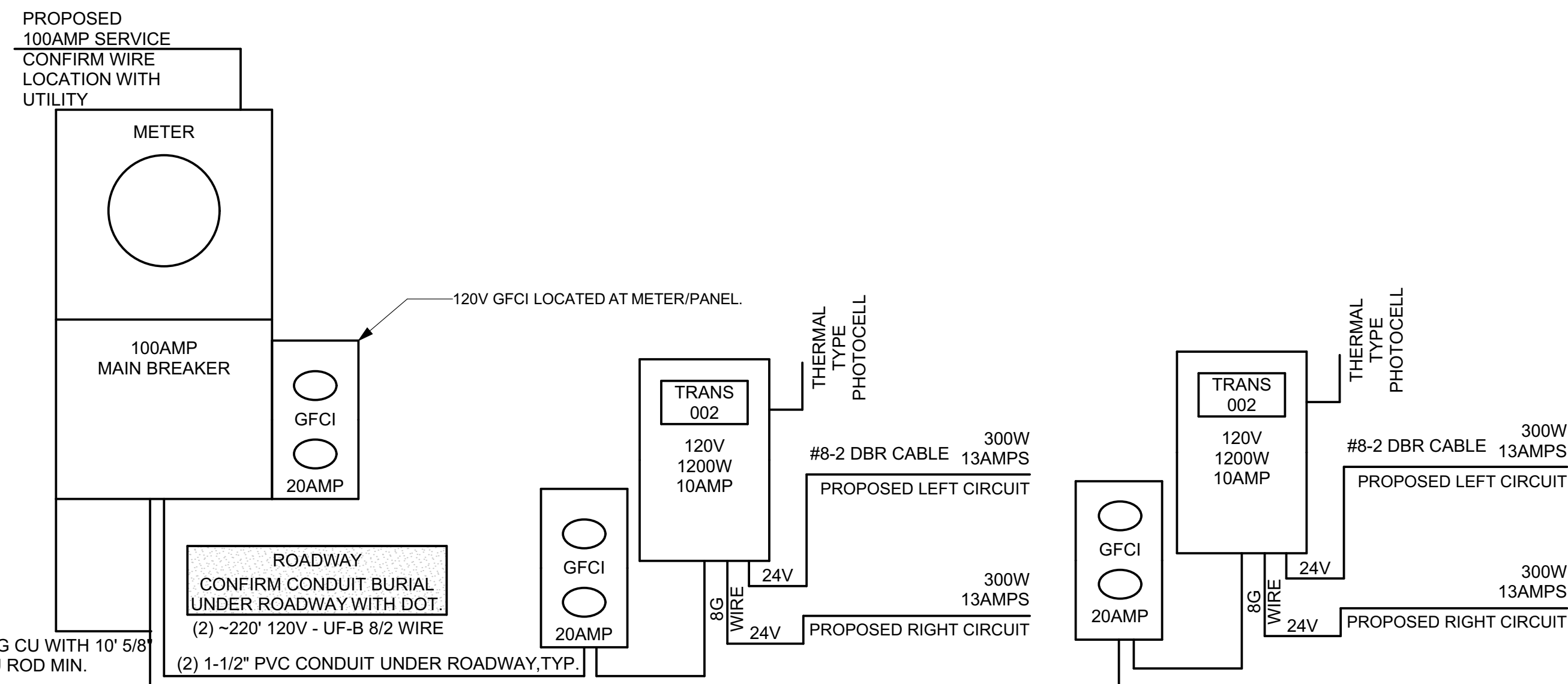
- LAMP TYPE REQUIRED  
 NUMBER OF LAMPS IN FIXTURE SEE ELECTRICAL SCHEDULE  
 BALLAST TYPE  
 NUMBER OF BALLAST  
 TOTAL WATTAGE PER FIXTURE  
**TOTAL INTERIOR WATTAGESPECIFIED VS ALLOWED: N/A**

**EXTERIOR LUMENS SPECIFIED VS ALLOWED:**

NOTE: LIGHTING USED FOR HIGHLIGHTING PUBLIC MONUMENTS IS EXEMPT FROM THE REQUIREMENTS BELOW

**ELECTRICAL SCOPE:**

- INSTALL AND CONNECT CIRCUITS FOR LOW VOLTAGE LANDSCAPE LIGHTING TO NEW METER.



**NOTE:**

- ELECTRICIAN AND CONTRACTOR TO CONFIRM FINAL CIRCUIT OCP AND CONNECTIONS TO MAIN PANELS WITH ENGINEER PRIOR TO BEGINNING WORK.
- FINAL WIRE AND CONDUIT SIZING DETERMINED BY SITE CONDITIONS. CONTRACTOR TO COORDINATE WIRE RUNS AND SIZING PER NC 2017 NEC WITH ENGINEER PRIOR TO INSTALLATION.
- 24V LANDSCAPE LIGHTING TO USE #8-2 DBR CABLE OR EQUAL IN 1/2" NM LIQUID TIGHT CONDUIT. MAX 50FT PER CIRCUIT FOR 100FT TOTAL. CABLE GLANDS REQUIRED WHERE WIRE LEAVES CONDUIT TO FIXTURE.
- (2) 1-1/2" PVC CONDUIT UNDER ROADWAY- CONFIRM BURIAL DEPTH WITH DOT. APPROX 125FT LENGTH. (2) 20AMP 120V CIRCUITS PULLED TO GFCI OUTLETS WITH WET-RATED IN-USE COVERS. ATTACH TO 4X4 PT 3'-0" MIN EMBED DEPTH, MAX HEIGHT 3' ABOVE GRADE, PAINT SHERWIN WILLIAMS SUPERDECK STAIN, SEMI TRANSPARENT, COLOR: SW 3501 REDWOOD. LOW VOLTAGE TRANSFORMER TO ATTACH TO OPPOSITE SIDE OF 4X4 PT POST.

**1 UTILITY + MAIN SERVICE PANEL NOTES PISGAH ROAD ELECTRICAL**  
 3/8" = 1'-0"

PANEL SCHEDULE: M 1-PROPOSED									
MAIN PANEL: EATON MODEL #MBT48B200BTS MAIN									
120/240 VOLTS 1-PHASE 3-WIRE 200-AMP MAIN 10,000AIC									
		BUS A			BUS B				
CKT	BRK	WIRE	DESC	LOAD 1 (VA)	LOAD 2 (VA)	DESC	WIRE	BRK	CKT
1	20	8	GFCI RECEPT TRANS	1200	180	GFCI RECEPT	12	20	2
3	20	8	GFCI RECEPT TRANS	1200	000	SPARE			4

NOTE:  
 1. NEW PANEL TO UTILIZE 100AMP MAIN BREAKER IN METER PANEL. MAIN OCP SIZING AND CIRCUIT WIRE SIZING TO BE AS PER NEC AND CONFIRMED WITH ENGINEER PRIOR TO INSTALLATION.  
 2. FINAL SIZING OF MAIN PANEL OCP TO BE CONFIRMED PER NEC ON SITE.

COMMENTS:  
 -ELECTRICAL CONTRACTOR TO CONFIRM EQUIP WIRE RUNS, SIZING, AND OVERCURRENT PROTECTION PER NEC WITH ENGINEER.  
 -LOADS ADJUSTED:- LIGHTS 125%, PUMP MOTOR- 125%, OTHER 100%

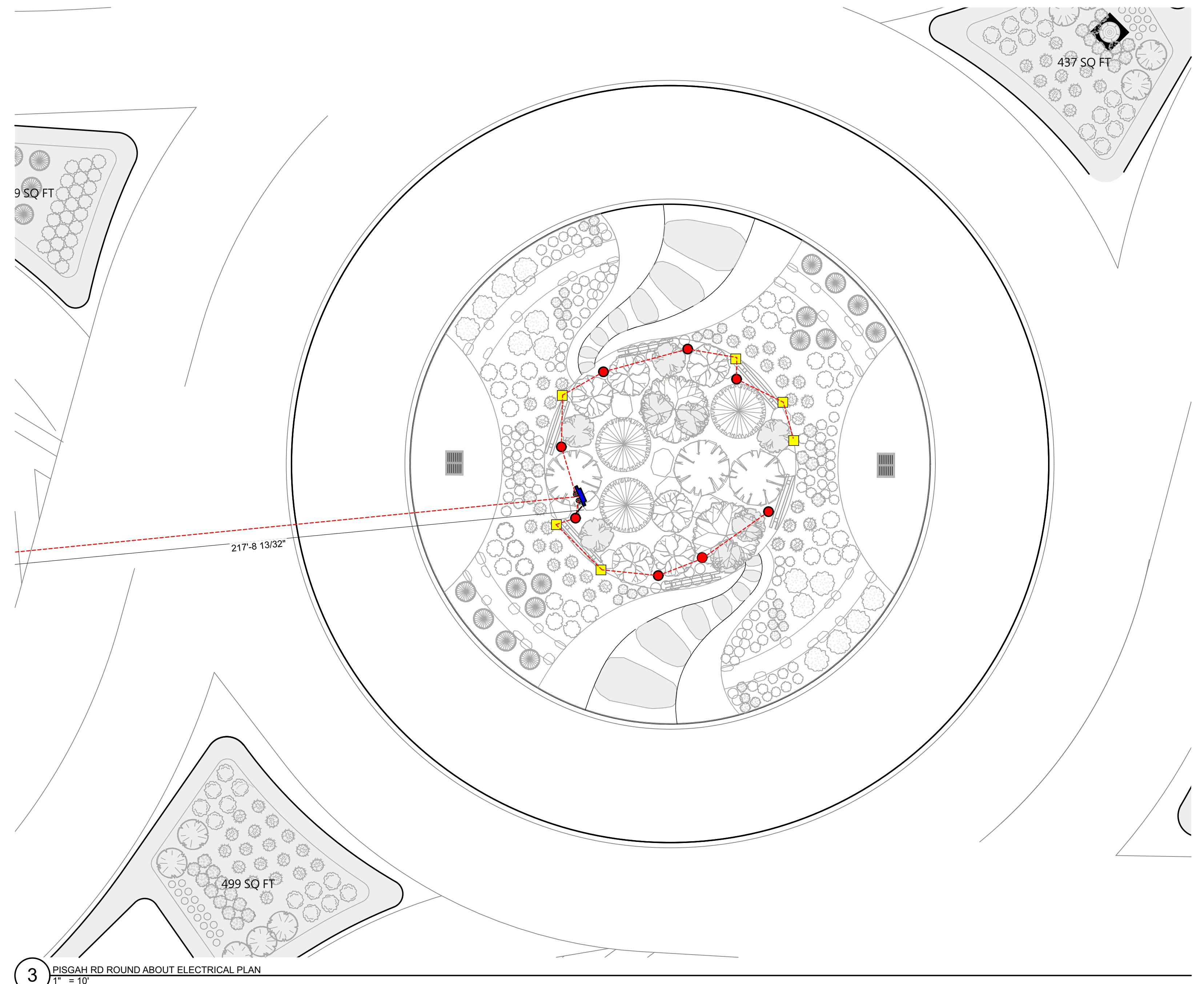
TTL CONNECTED KVA: 1.4  
 TTL DEMAND KVA: 2.4  
 TTL DEMAND AMPS: 5

ELECTRICAL SCHEDULE						
KEY	ITEM DESC	QUANTITY	MODEL #	SPECIFICATION	WATTAGE	VOLTAGE
[Yellow Box]	ELECTRICAL	1	CIWL6	WASH LIGHTS 20 LIGHT LEVELS W/ DIMMER		24V
[GFI Symbol]	GFCI	4		COOPER TRAFGF15 OR EQUAL WITH #1991 HORIZONTAL OR #4966 VERTICAL WEATHERPROOF HOUSING	20 AMP	120V
[Red Circle]	LIGHT 1	8	CAST (CCGL25036B)	36° BEAM ANGLE	35 WATT HALOGEN	24V
[Yellow Circle]	LIGHT 2	3	CAST (CCSL18336B)	36° BEAM ANGLE		24V
[Yellow Square]	LIGHT 3	12	CAST LED MINI WASH (CWL6LED1)	120° BEAM ANGLE		24V
[Meter Symbol]	METER	1	EATON MODEL #MBT48B400BTS MAIN	200AMP 1PH		120V/240V/
[Blue Box]	TRANS	2	CAST PERIMETER 600W X 1200W DC LIGHTING TRANSFORMERS	36° BEAM ANGLE		24V
[PhotoCell Symbol]	PHOTOCELL	1	INTERMATIC ELEC-EK4236S	6IN LEAD LENGTH	UP TO 1,650W	120/208/240/277 V

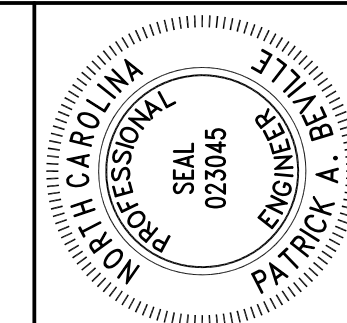
**2 ELECTRICAL SCHEDULE PISGAH ROAD**

SCALE: 1:1.28

- NOTE: EXACT CONDUIT LENGTHS TO BE CONFIRMED WITH DOT GRADING PLAN AND UTILITY METER LOCATION.  
 1. APPROXIMATELY (2) 250' 1-1/2" PVC CONDUIT UNDER ROADWAY, ONE CONDUIT EMPTY AND CAPPED FOR REPAIR/ADDITIONAL FUTURE CIRCUITS.  
 2. APPROXIMATELY 100' 1" PVC CONDUIT FOR LOW VOLTAGE LIGHTING WIRE PROTECTION WITHIN LANDSCAPING AREA.



**3 PISGAH RD ROUND ABOUT ELECTRICAL PLAN**  
 1" = 10'



PATRICK A. BEVILLE PE, LEED AP  
 IONCON, PLLC P-0820  
 2654 HWY 105  
 BOONE, NC 28607  
 INFO@IONCON.COM



BREVARD ROUNDABOUTS - ELECTRICAL  
 SITE ADDRESS: CITY OF BREVARD  
 OWNER: TERESA BUCKWALTER  
 10200 W. STATE ROAD 100  
 BOONVILLE, FL 32909  
 (828) 719-9177 | TERESA@IONCON.COM

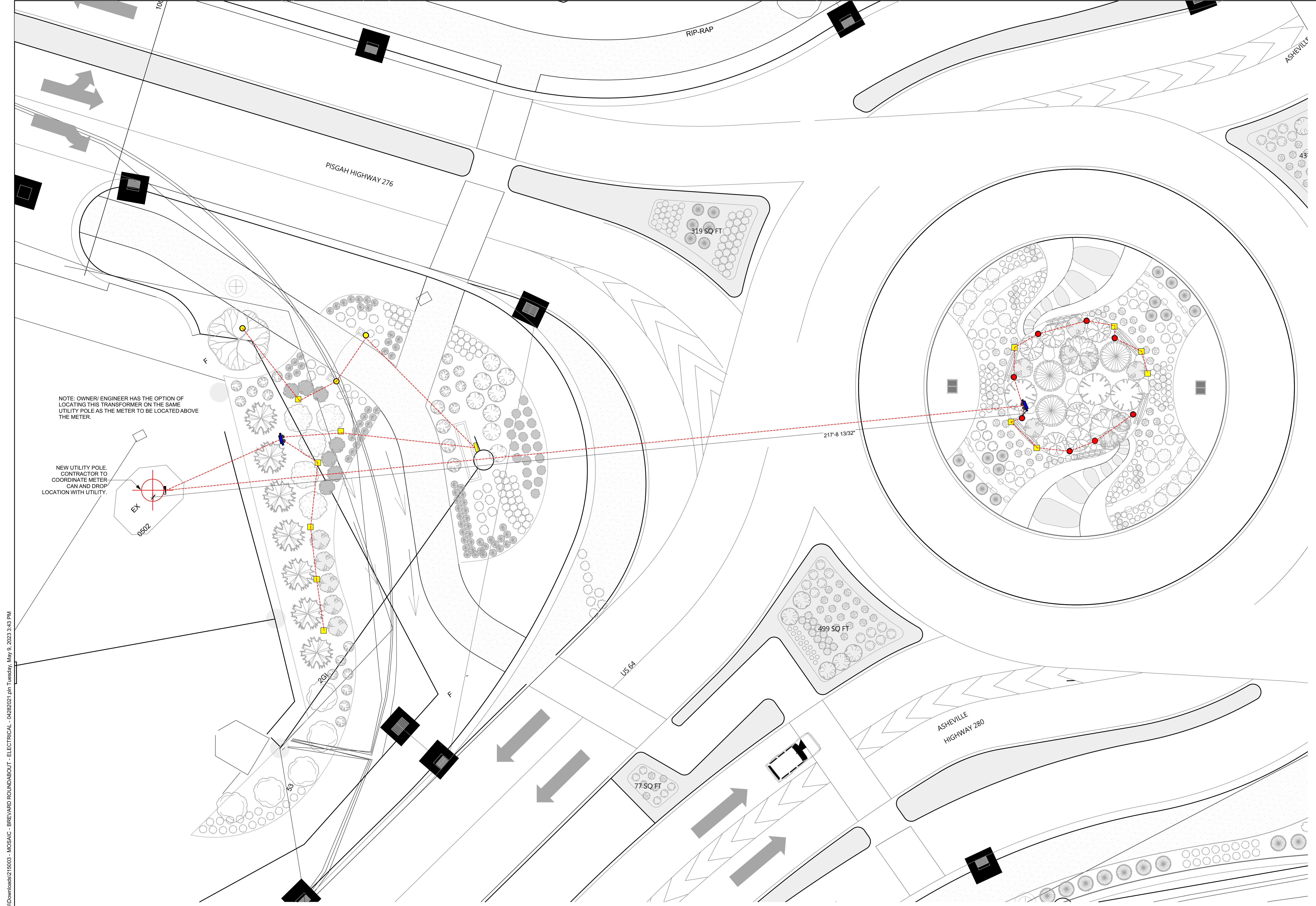
PISGAH RD ELECTRICAL

QC	BY	DATE
BOD	-	###/###/###
DST	-	###/###/###
CNS	-	###/###/###
CDE	-	###/###/###
COM	-	###/###/###

DATE	5/9/2023
SCALE	AS NOTED
DRW	MEB
EIT	QD
JOB #	215003

**E03**



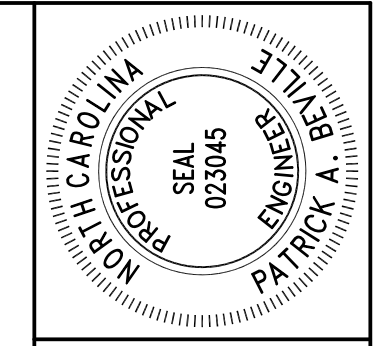


NOTE: OWNER/ ENGINEER HAS THE OPTION OF LOCATING THIS TRANSFORMER ON THE SAME UTILITY POLE AS THE METER TO BE LOCATED ABOVE THE METER.

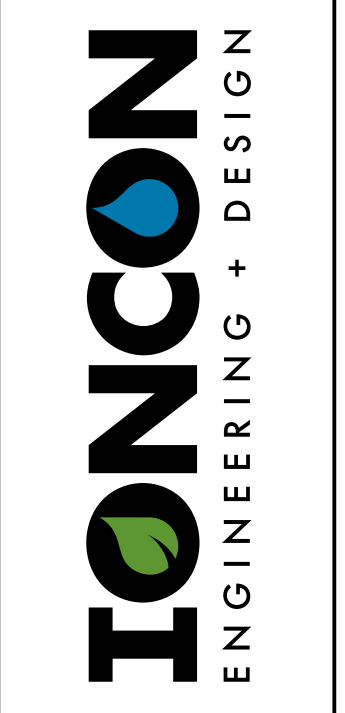
NEW UTILITY POLE. CONTRACTOR TO COORDINATE METER CAN AND DROP LOCATION WITH UTILITY.

1 PISGAH RD ROUND ABOUT ELECTRICAL PLAN  
1" = 10'

C:\Users\Rachel\Downloads\215003 - MOSAIC - BREVIARD ROUNDABOUT - ELECTRICAL - 04282021.pln Tuesday, May 9, 2023 3:43 PM



PATRICK A. BEVILLE PE, LEED AP  
IONCON, PLLC P-0820  
2654 HWY 105  
BOONE, NC 28607  
INFO@IONCON.COM



BREVARD ROUNDABOUTS - ELECTRICAL  
SITE ADDRESS: CITY OF BREVIARD  
OWNER: TERESA BUCKWALTER  
PROJECT: 102001 CIVIC CENTER  
(828) 719-9177 | TERESA@IONCON.COM

PISGAH RD ELECTRICAL PLAN

QC	BY	DATE
BOD	-	###/##/##
DST	-	###/##/##
CNS	-	###/##/##
CDE	-	###/##/##
COM	-	###/##/##

DATE	5/9/2023
SCALE	AS NOTED
DRW	MEB
EIT	QD
JOB #	215003

E04

PLOTTED ON: 5/9/2023