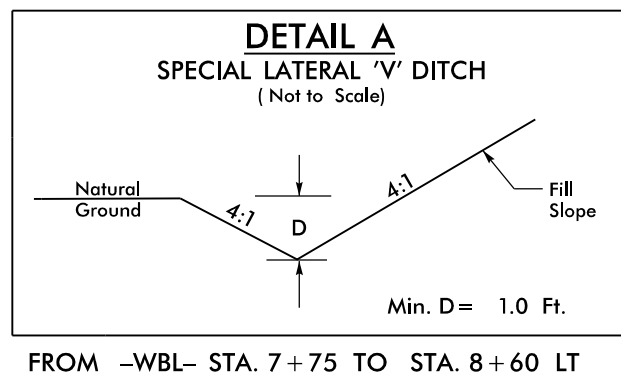
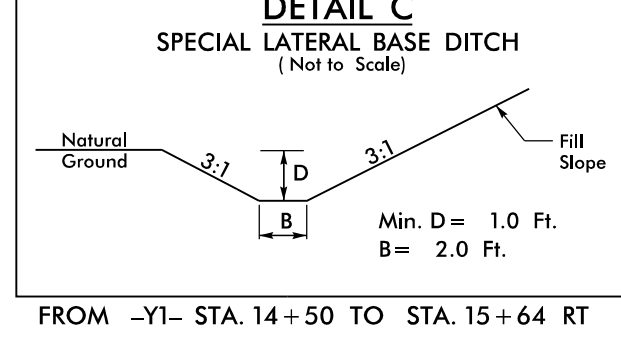


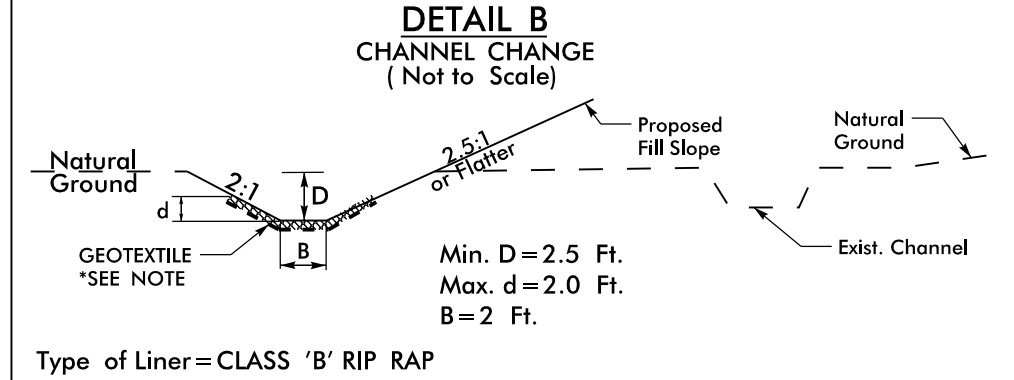
8/17/99



FROM -WBL- STA. 7+75 TO STA. 8+60 LT



FROM -YI- STA. 14+50 TO STA. 15+64 RT



Type of Liner=CLASS 'B' RIP RAP

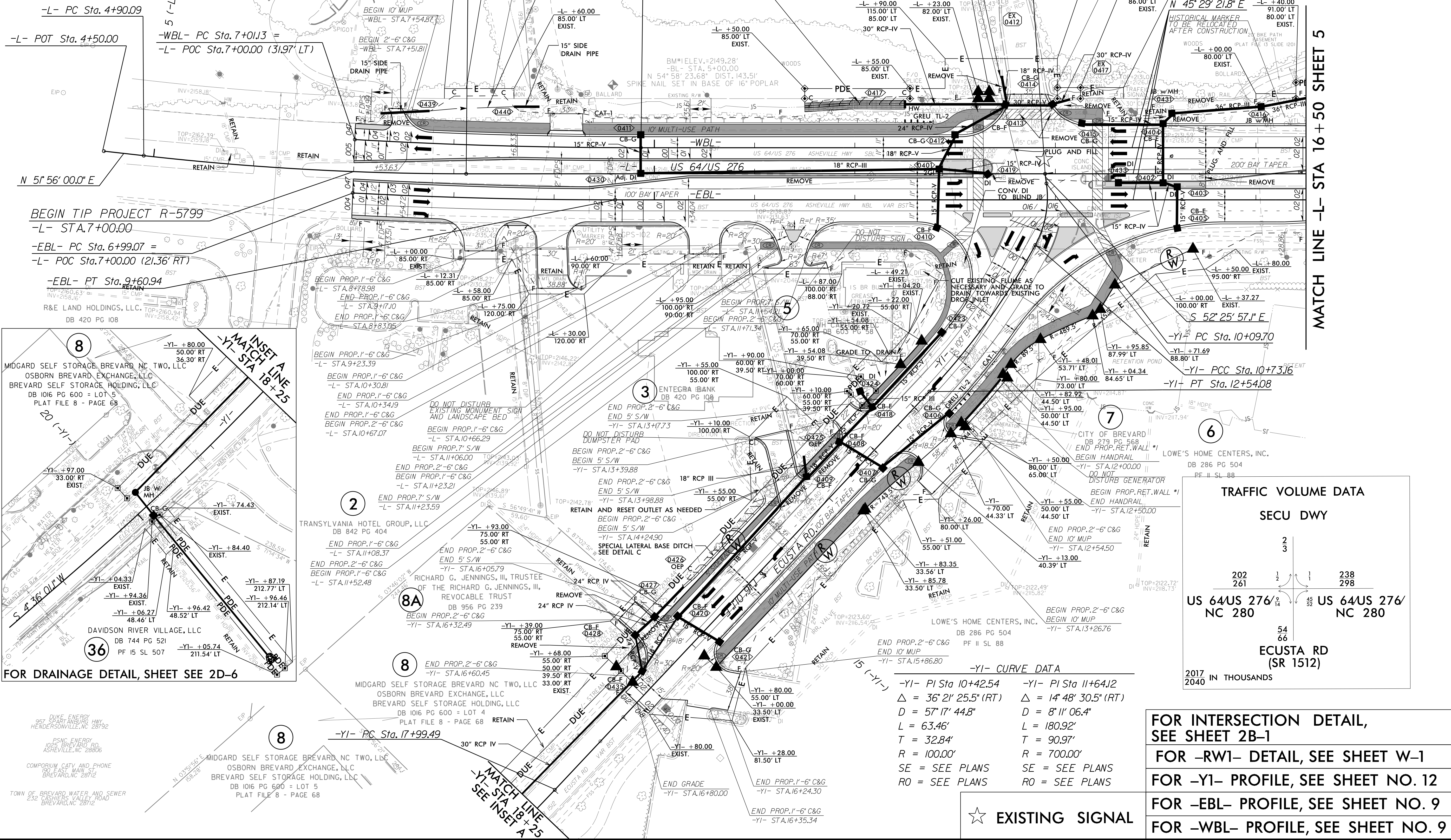
FROM -WBL- STA. 11+50 TO STA. 12+50 LT
EST. CLASS "B" RIP RAP = 86 TONS
EST. GEOTEXTILE = 120 SY

*DESIGN NOTE:
DURING CONSTRUCTION OF THE CHANNEL CHANGE, REMOVE GEOTEXTILE FABRIC AS NECESSARY TO EMBED THE RIP RAP IN THE STREAM BED.

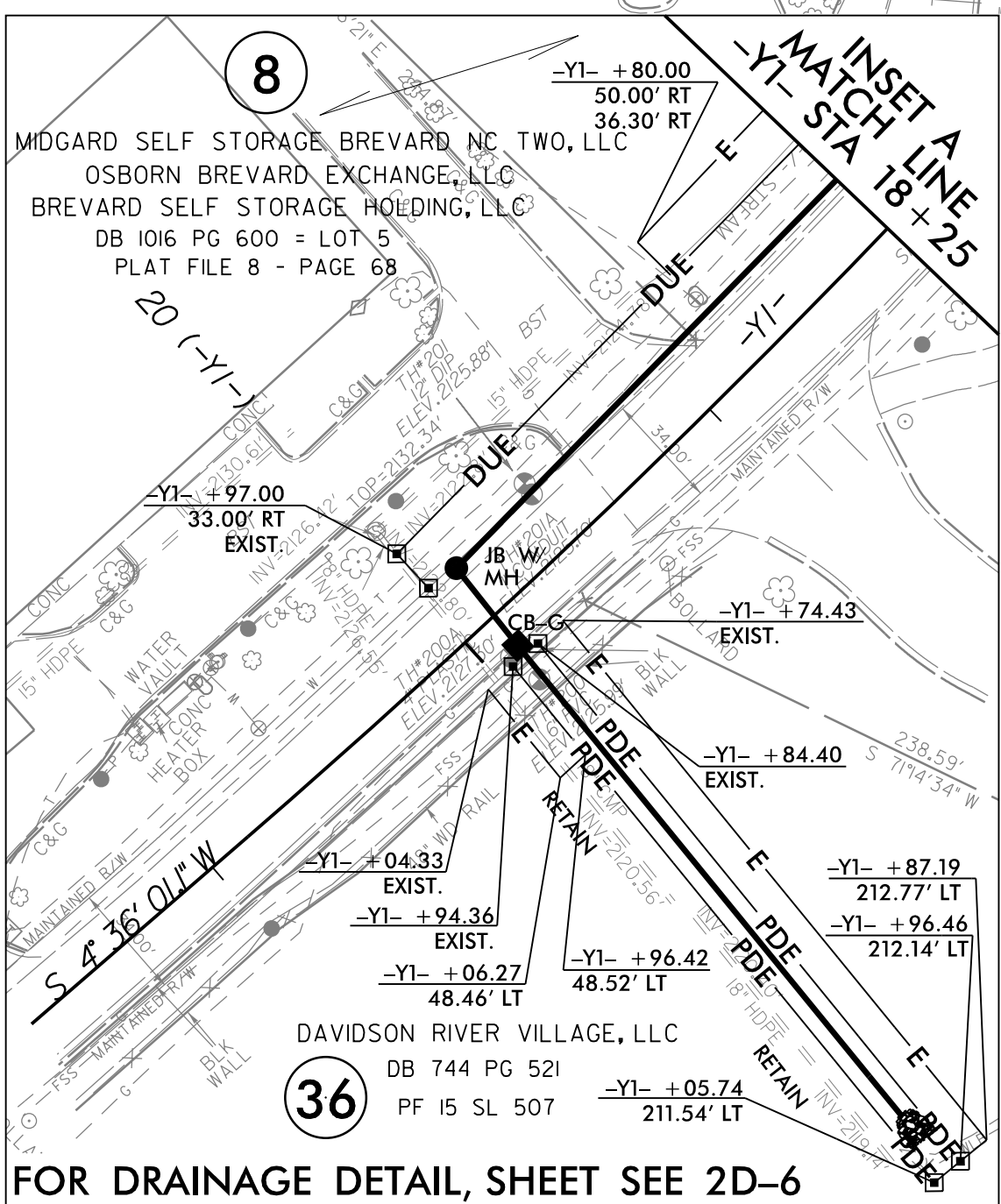
-L- CURVE DATA	-EBL- CURVE DATA	-WBL- CURVE DATA
-L- PI Sta 6+51.37	-EBL- PI Sta 8+30.04	-WBL- PI Sta 8+43.89
$\Delta = 6' 26' 38.2" (LT)$	$\Delta = 3' 00' 02.8" (LT)$	$\Delta = 3' 16' 15.9" (LT)$
$D = 1' 59' 59.5"$	$D = 1' 08' 45.3"$	$D = 1' 08' 45.3"$
$L = 322.22'$	$L = 261.87'$	$L = 285.46'$
$T = 161.28'$	$T = 130.96'$	$T = 142.77'$
$R = 2,865.00'$	$R = 5,000.00'$	$R = 5,000.00'$
	$SE = 02$	$SE = 02$
	$RO = 42'$	$RO = 42'$

-L- POT	-YI- POT
-L- POT Sta. 13+89.78 =	-YI- POT STA. 10+00.00

PROJECT REFERENCE NO. R-5799	SHEET NO. 4
ROADWAY DESIGN ENGINEER NORTH CAROLINA PROFESSIONAL SEAL ILLIUM 042359	HYDRAULICS ENGINEER NORTH CAROLINA PROFESSIONAL SEAL ALEXANDER 04978
9/14/2023	9/14/2023
DOCUMENT NOT CONSIDERED FINAL UNLESS ALL SIGNATURES COMPLETED	



BEGIN TIP PROJECT R-5799
 -L- STA. 7+00.00
 -EBL- PC Sta. 6+99.07 =
 -L- POC Sta. 7+00.00 (21.36' RT)
 -EBL- PT Sta. 9+60.94



TRAFFIC VOLUME DATA SECU DWY			
202	238	54	66
261	298	54	66
ECUSTA RD (SR 1512)			
2017 IN THOUSANDS			

FOR INTERSECTION DETAIL,
SEE SHEET 2B-1
 FOR -RWI- DETAIL, SEE SHEET W-1
 FOR -YI- PROFILE, SEE SHEET NO. 12
 FOR -EBL- PROFILE, SEE SHEET NO. 9
 FOR -WBL- PROFILE, SEE SHEET NO. 9

☆ EXISTING SIGNAL



MATCH LINE -L- STA 16 + 50 SHEET 5

MIDGARD SELF STORAGE BREVARD NC TWO, LLC
 OSBORN BREVARD EXCHANGE, LLC
 BREVARD SELF STORAGE HOLDING, LLC
 DAVIDSON RIVER VILLAGE, LLC
 TOWN OF BREVARD WATER AND SEWER

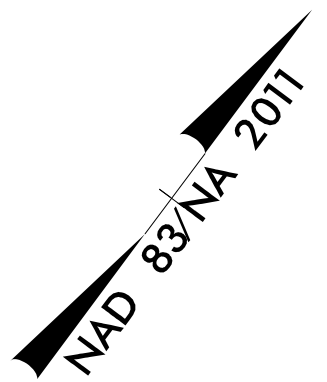
PS&C ENERGY
1025 BREVARD RD.
ASHEVILLE, NC 28806

COMPORIUM CITY AND PHONE
190 EAST MAIN ST.
BREVARD, NC 28712

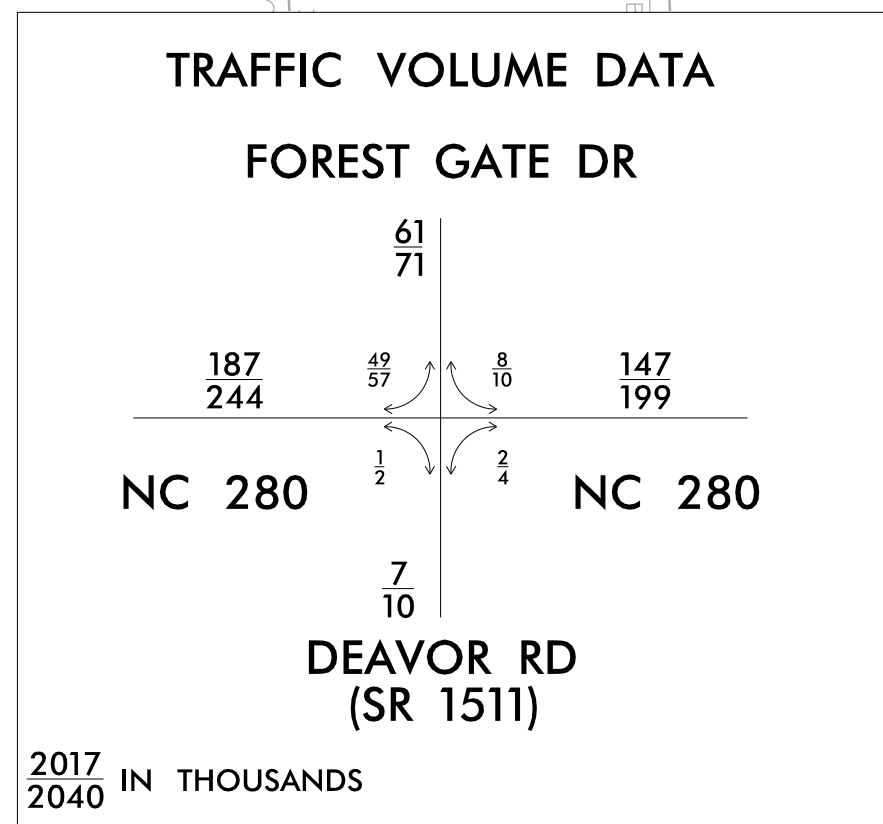
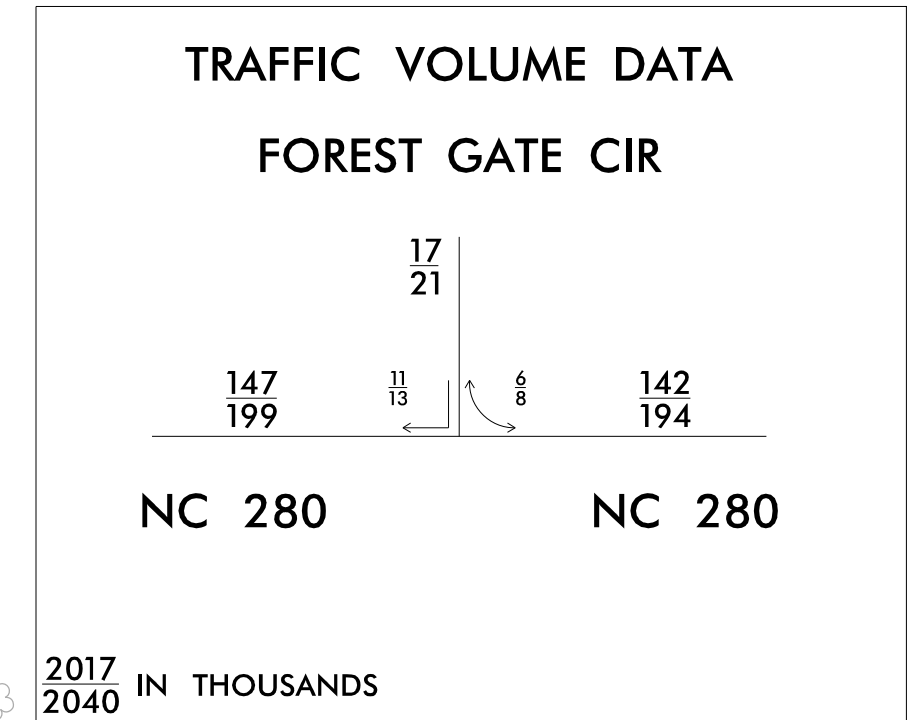
05-SEP-2023 17:46 R:\Projects\2023\1746 R:\Roadway\Plan\RS799_Rdy_psh_04.dgn

PROJECT REFERENCE NO. R-5799	SHEET NO. 6
ROADWAY DESIGN ENGINEER 	HYDRAULICS ENGINEER 
6/15/2023	6/15/2023

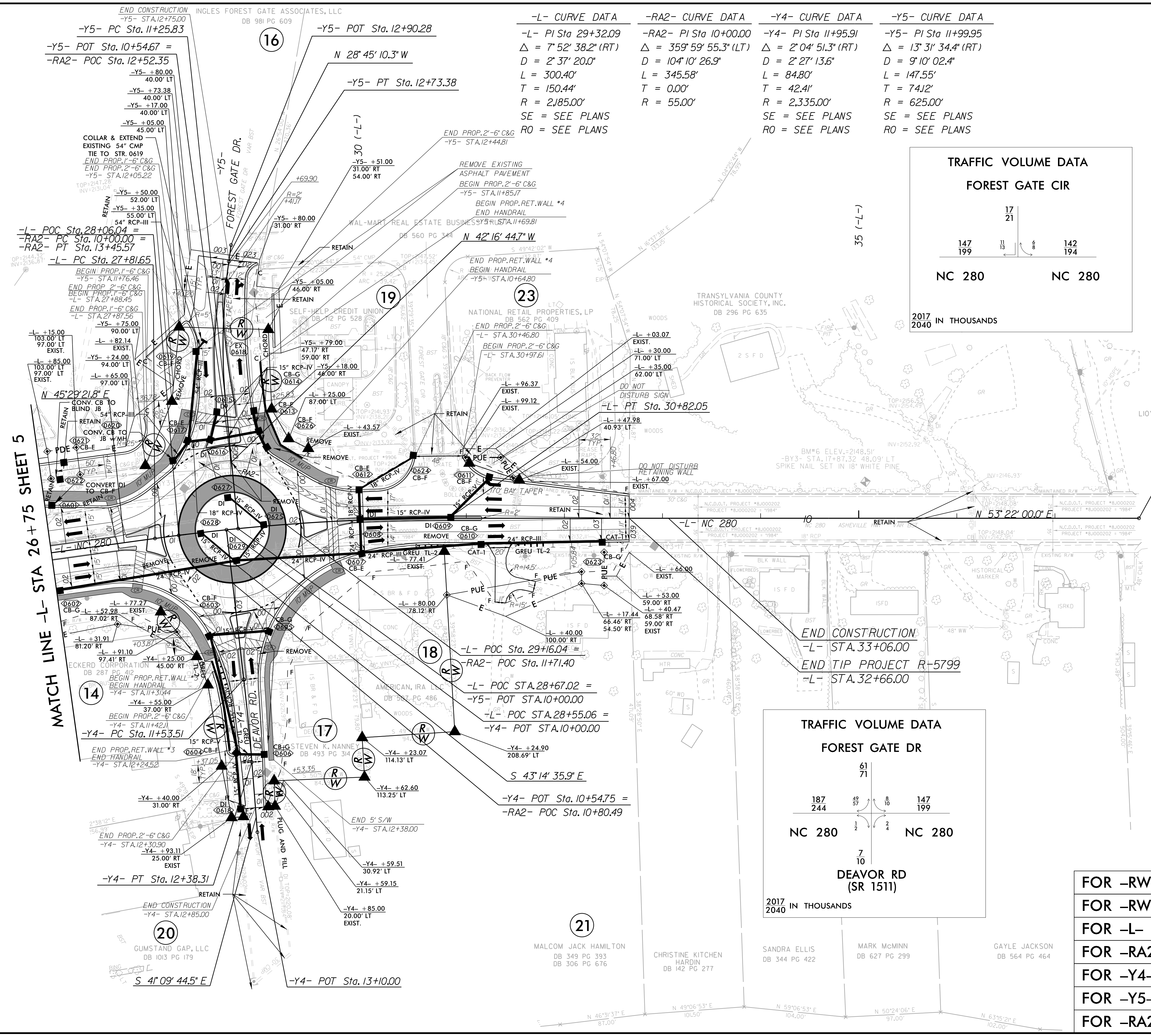
DOCUMENT NOT CONSIDERED FINAL UNLESS ALL SIGNATURES COMPLETED



-L- CURVE DATA	-RA2- CURVE DATA	-Y4- CURVE DATA	-Y5- CURVE DATA
-L- PI Sta 29+32.09 Δ = 7° 52' 38.2" (RT) D = 2' 37' 20.0" L = 300.40' T = 150.44' R = 2,185.00' SE = SEE PLANS RO = SEE PLANS	-RA2- PI Sta 10+00.00 Δ = 359° 59' 55.3" (LT) D = 104° 10' 26.9" L = 345.58' T = 0.00' R = 55.00'	-Y4- PI Sta 11+95.91 Δ = 2° 04' 51.3" (RT) D = 2' 27' 13.6" L = 84.80' T = 42.41' R = 2,335.00' SE = SEE PLANS RO = SEE PLANS	-Y5- PI Sta 11+99.95 Δ = 13° 31' 34.4" (RT) D = 9° 10' 02.4" L = 147.55' T = 74.12' R = 625.00' SE = SEE PLANS RO = SEE PLANS



- FOR -RW3- DETAIL, SEE SHEET W-3
- FOR -RW4- DETAIL, SEE SHEET W-6
- FOR -L- PROFILE, SEE SHEET NO. 10
- FOR -RA2- PROFILE, SEE SHEET NO. 11
- FOR -Y4- PROFILE, SEE SHEET NO. 13
- FOR -Y5- PROFILE, SEE SHEET NO. 13
- FOR -RA2-, SEE DETAIL SHEET 2B-5

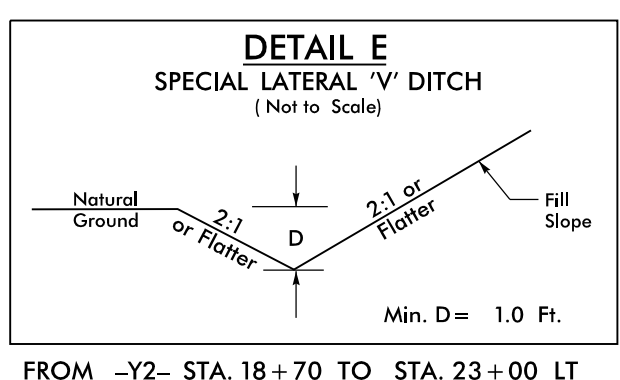


MATCH LINE -L- STA 26 + 75 SHEET 5

8.17.23
23 MAY 2023 17:16 R5799_Rdy_psh_06.dgn
P:\Roads\Projects\2023\20230516\20230516.dgn

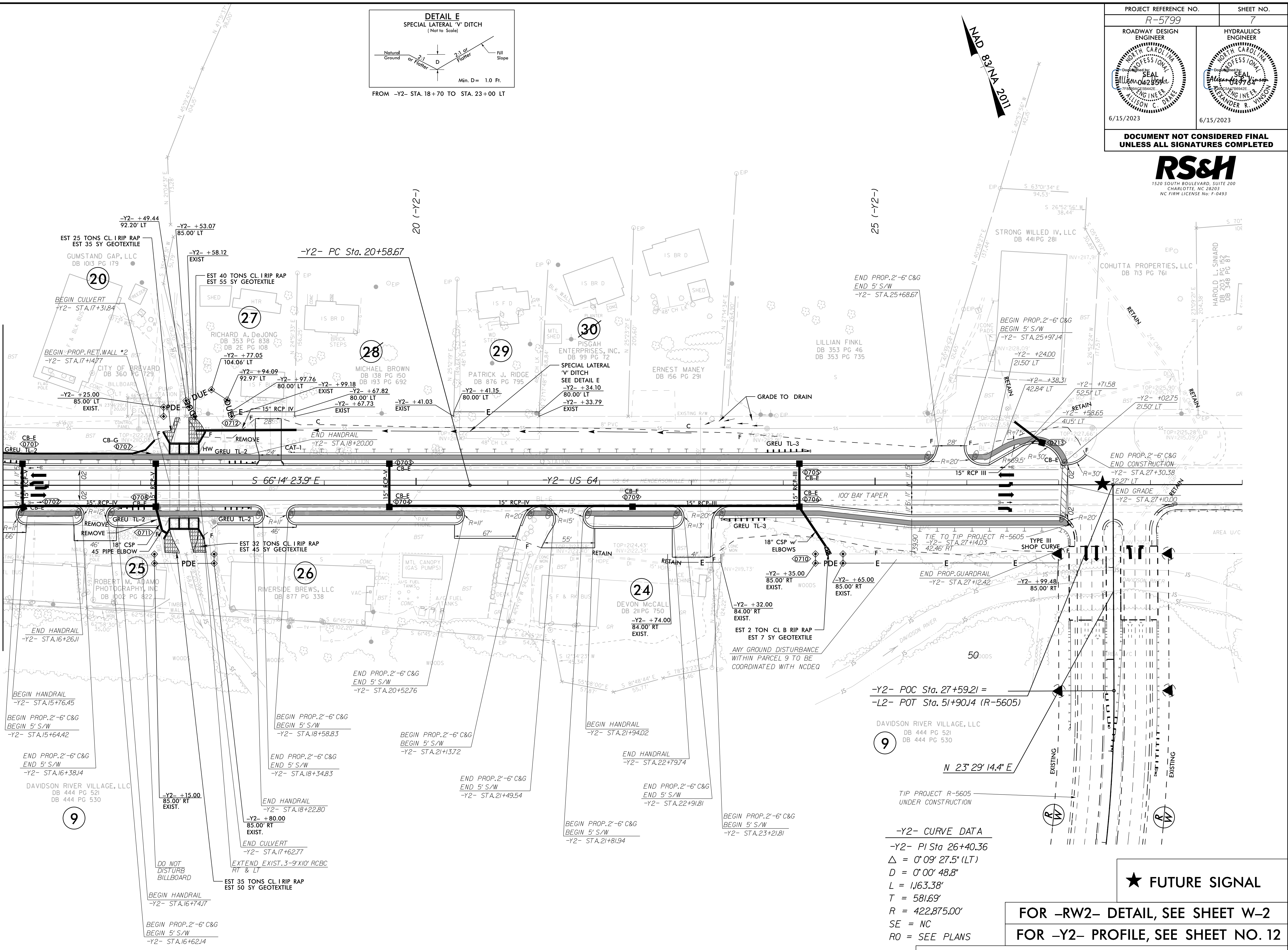
PROJECT REFERENCE NO. R-5799	SHEET NO. 7
ROADWAY DESIGN ENGINEER William C. Drake Professional Engineer No. 42859 Exp. 12/31/2024	HYDRAULICS ENGINEER Alexander R. Johnson Professional Engineer No. 42859 Exp. 12/31/2024
6/15/2023	6/15/2023

**DOCUMENT NOT CONSIDERED FINAL
UNLESS ALL SIGNATURES COMPLETED**



FROM -Y2- STA. 18+70 TO STA. 23+00 LT

MATCH LINE -Y2- STA 15+50 SEE SHEET 5



-Y2- POC Sta. 27+59.21 =
-L2- POT Sta. 51+90.14 (R=5605)

DAVIDSON RIVER VILLAGE, LLC
DB 444 PG 521
DB 444 PG 530

-Y2- CURVE DATA
 -Y2- PI Sta 26+40.36
 $\Delta = 0^{\circ}09'27.5''$ (LT)
 $D = 0^{\circ}00'48.8''$
 $L = 1,163.38'$
 $T = 581.69'$
 $R = 422,875.00'$
 $SE = NC$
 $RO = SEE PLANS$

★ FUTURE SIGNAL

FOR -RW2- DETAIL, SEE SHEET W-2
FOR -Y2- PROFILE, SEE SHEET NO. 12

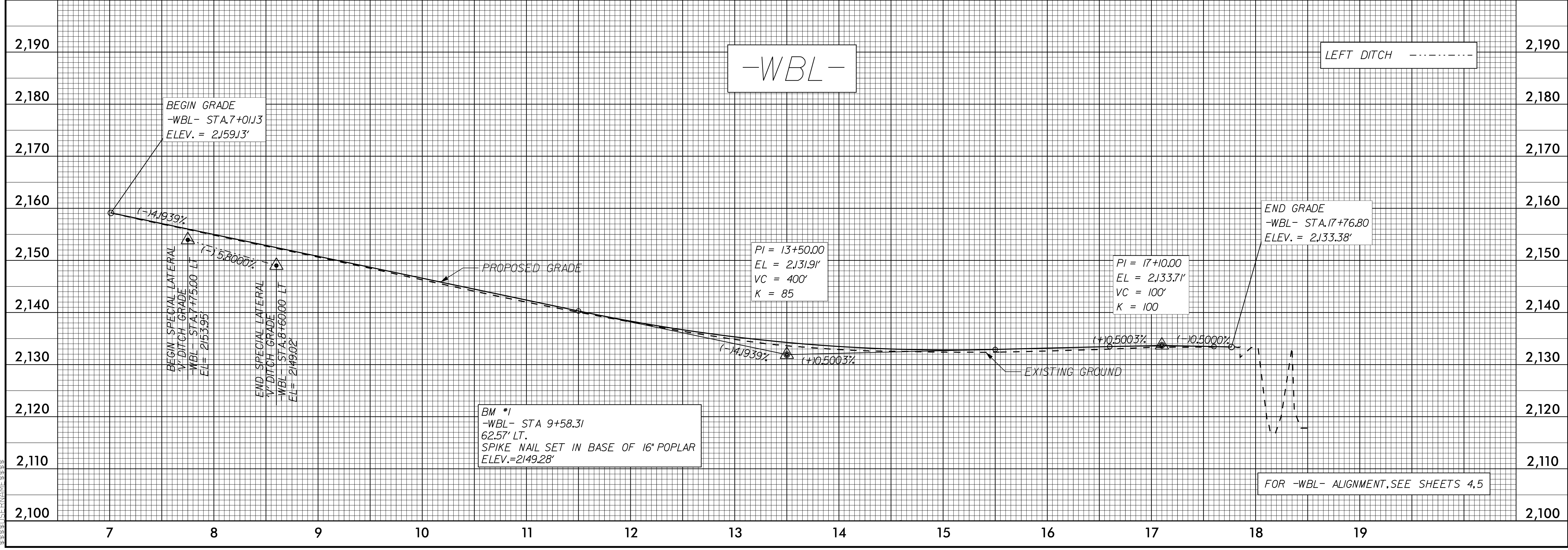
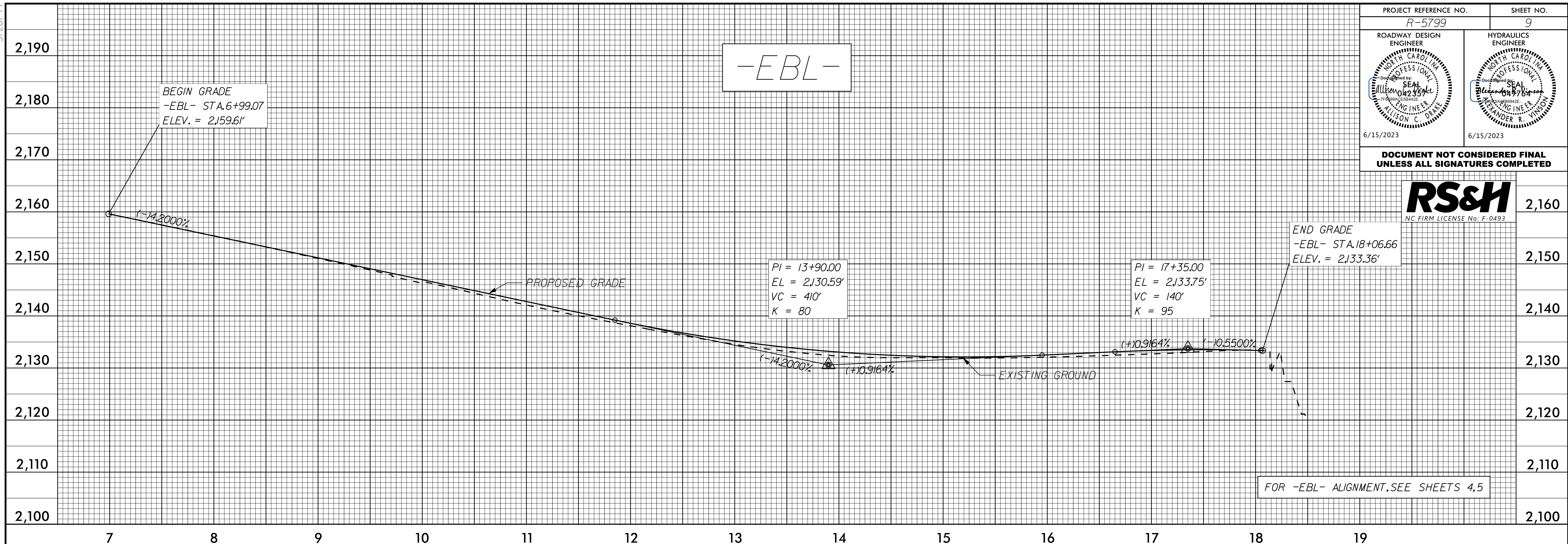
FOR STRUCTURE PLANS, SEE SHEET C-1 THRU C-10

8.17.7.99
23 MAY 2023 17:16 R5799_Rdy_psh_07.dgn
P:\Roadway\Projects\5799\Drawings\Sheet\5799-R5799-Rdy_psh_07.dgn

5/28/23

PROJECT REFERENCE NO. R-5799	SHEET NO. 9
ROADWAY DESIGN ENGINEER WILLIAM C. DICK PROFESSIONAL SEAL NO. 42354 6/15/2023	HYDRAULICS ENGINEER ALEXANDER R. WINN PROFESSIONAL SEAL NO. 9763 6/15/2023

DOCUMENT NOT CONSIDERED FINAL
UNLESS ALL SIGNATURES COMPLETED



BEGIN SPECIAL LATERAL
1/2" DITCH GRADE
-WBL- STA. 7+17.50 LT
ELEV. = 2153.95'

END SPECIAL LATERAL
1/2" DITCH GRADE
-WBL- STA. 8+60.00 LT
ELEV. = 2149.02'

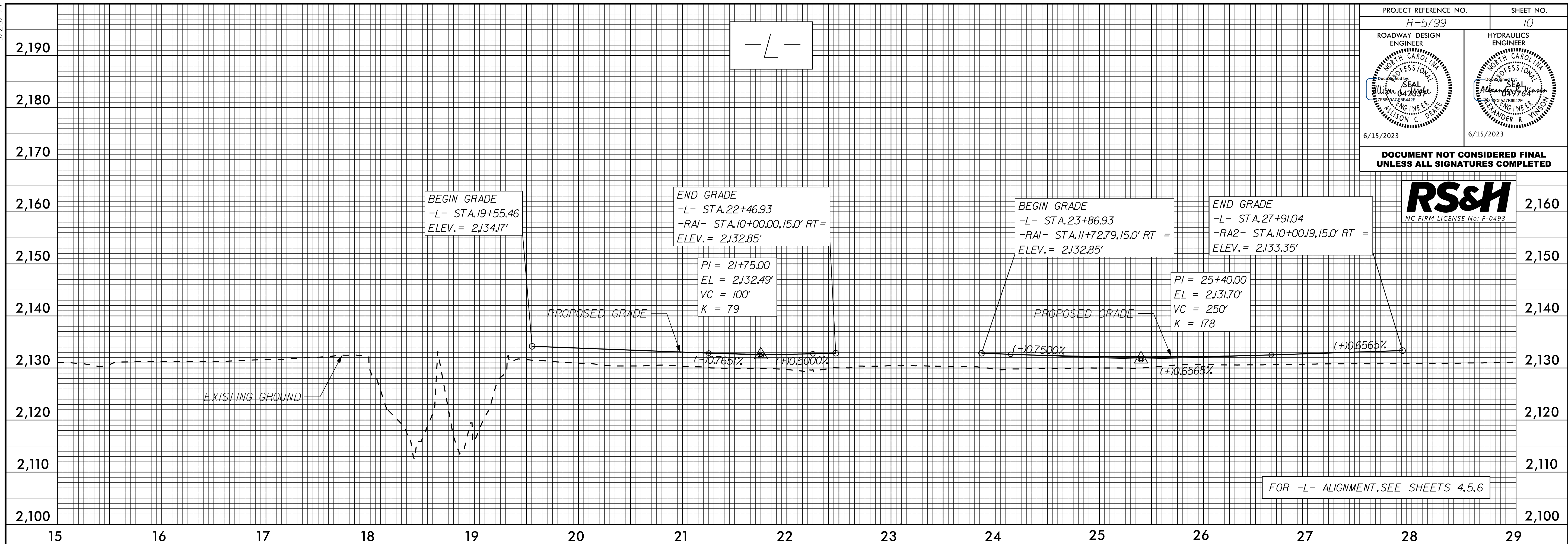
BM *1
-WBL- STA 9+58.31
62.57' LT.
SPIKE NAIL SET IN BASE OF 16" POPLAR
ELEV. = 2149.28'

05-MAY-2023 17:09
RS&H Roadway Design
R:\Projects\5799_Roadway\Drawings\5799-09.dwg

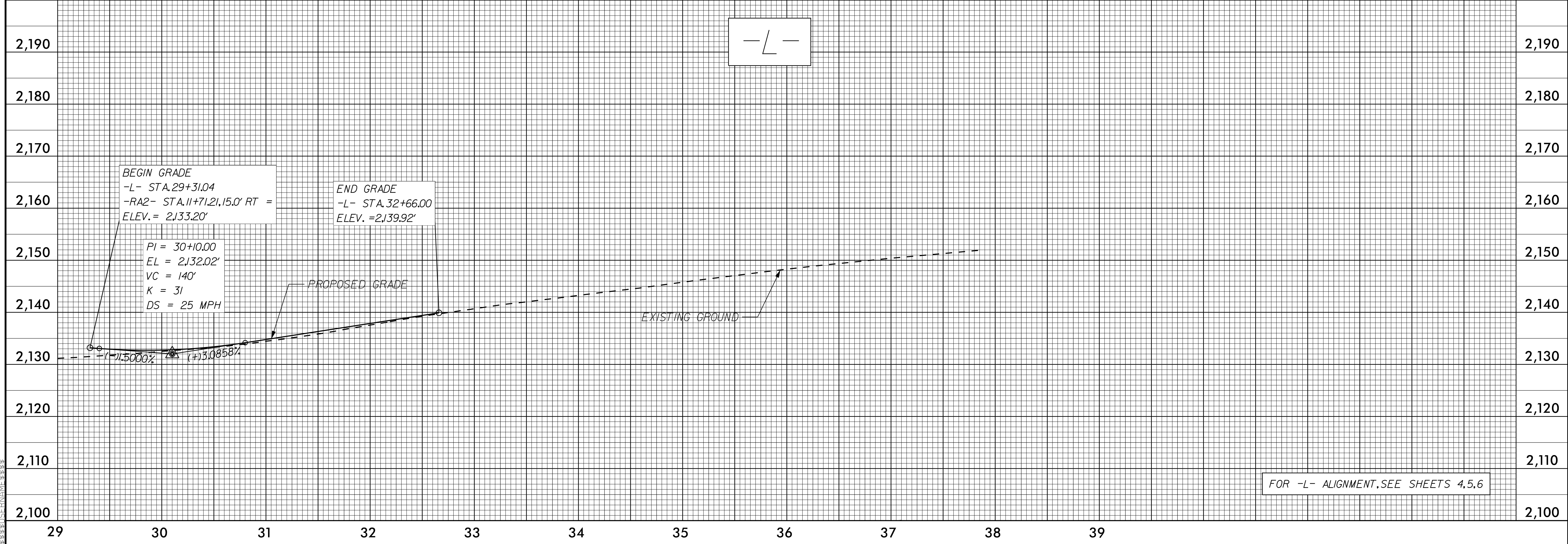
5/28/99

PROJECT REFERENCE NO. R-5799	SHEET NO. 10
ROADWAY DESIGN ENGINEER WILLIAM C. DRAKE Professional Seal 6/15/2023	HYDRAULICS ENGINEER ALEXANDER R. WILSON Professional Seal 6/15/2023

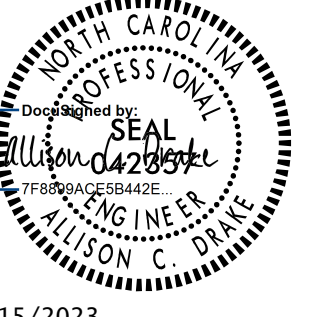
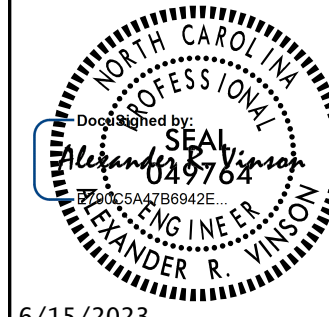
DOCUMENT NOT CONSIDERED FINAL
UNLESS ALL SIGNATURES COMPLETED



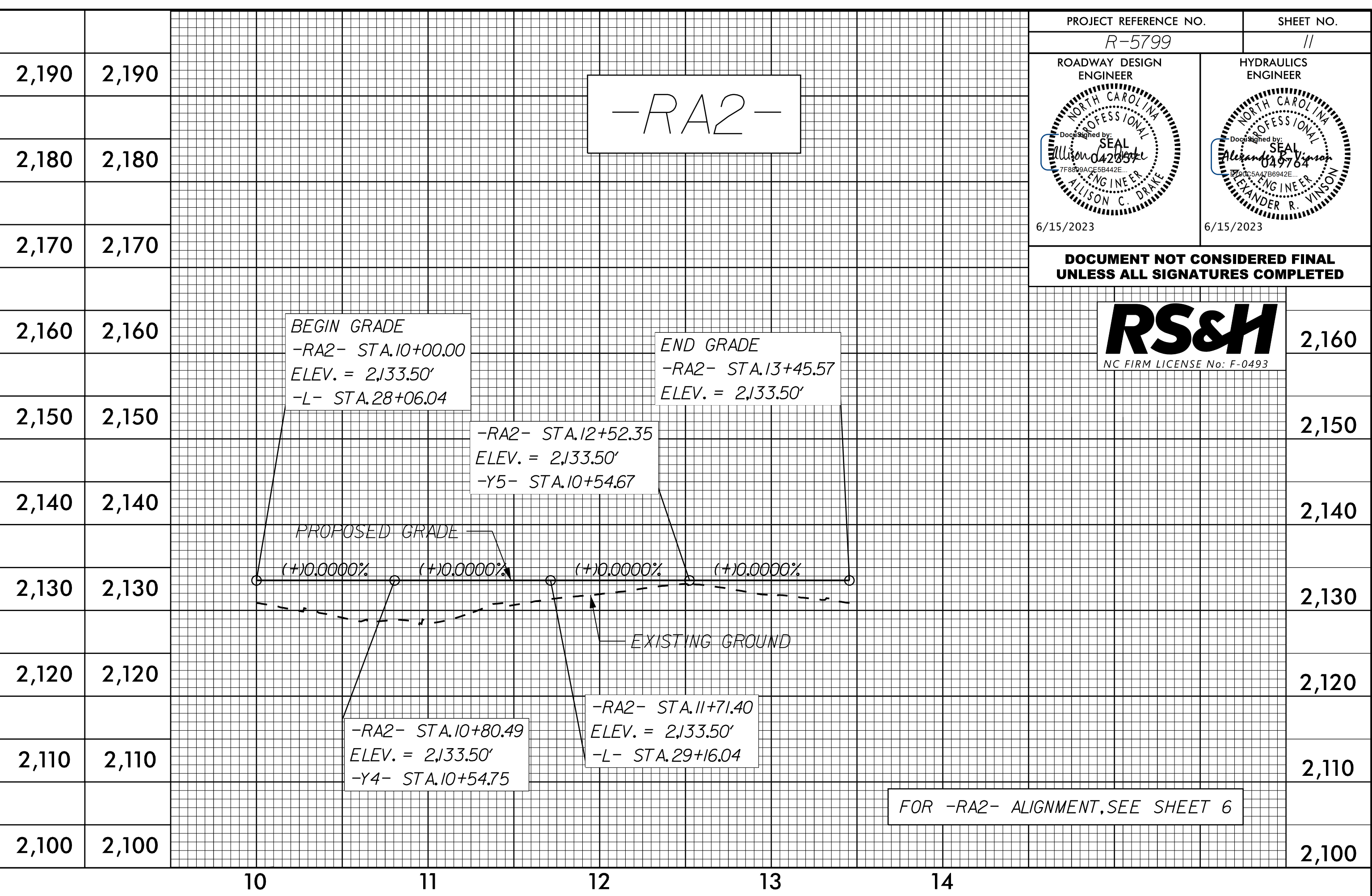
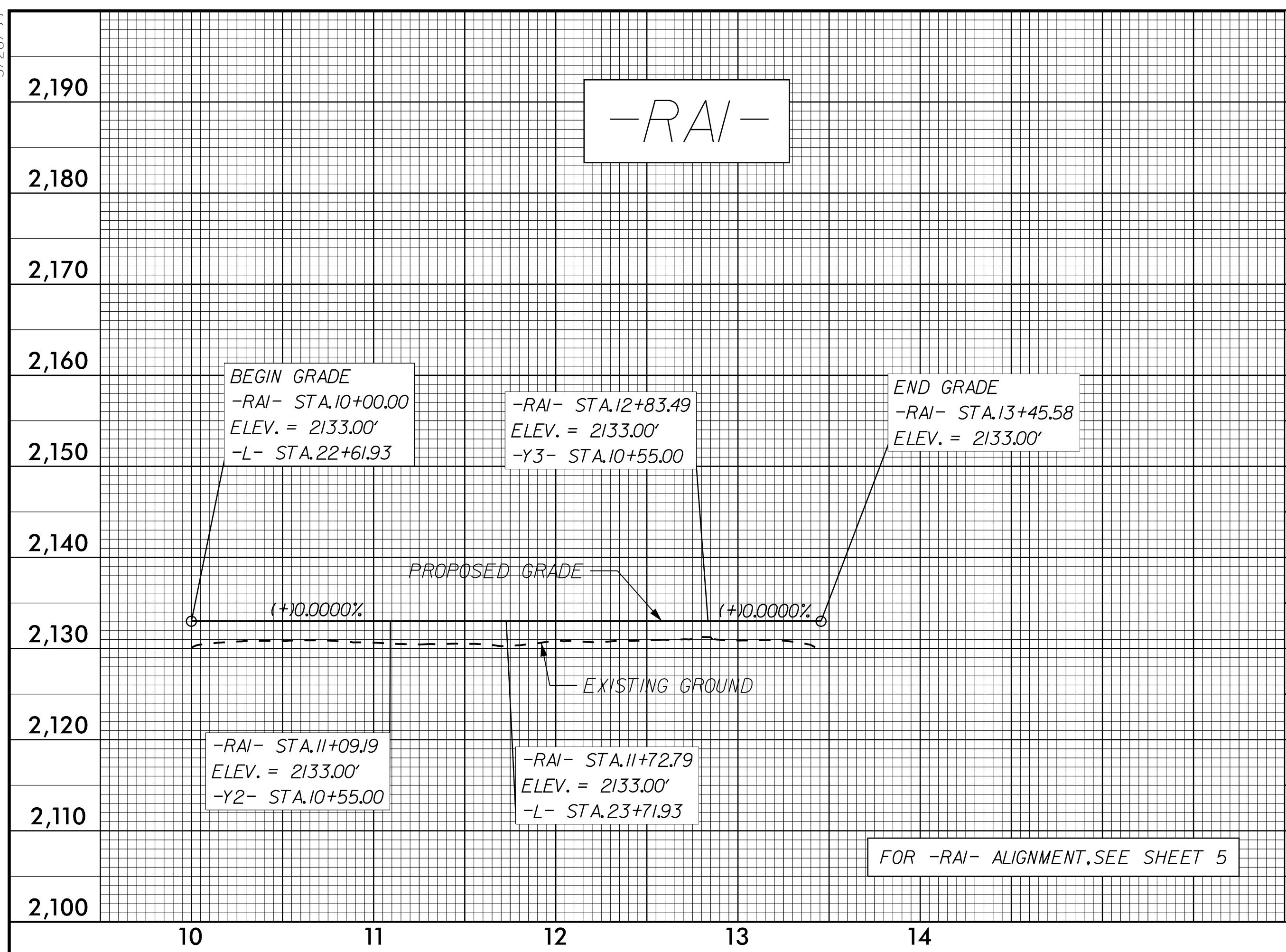
05-MAY-2023 17:09
R:\Road\5799\5799_Rdy_p1_10.dgn



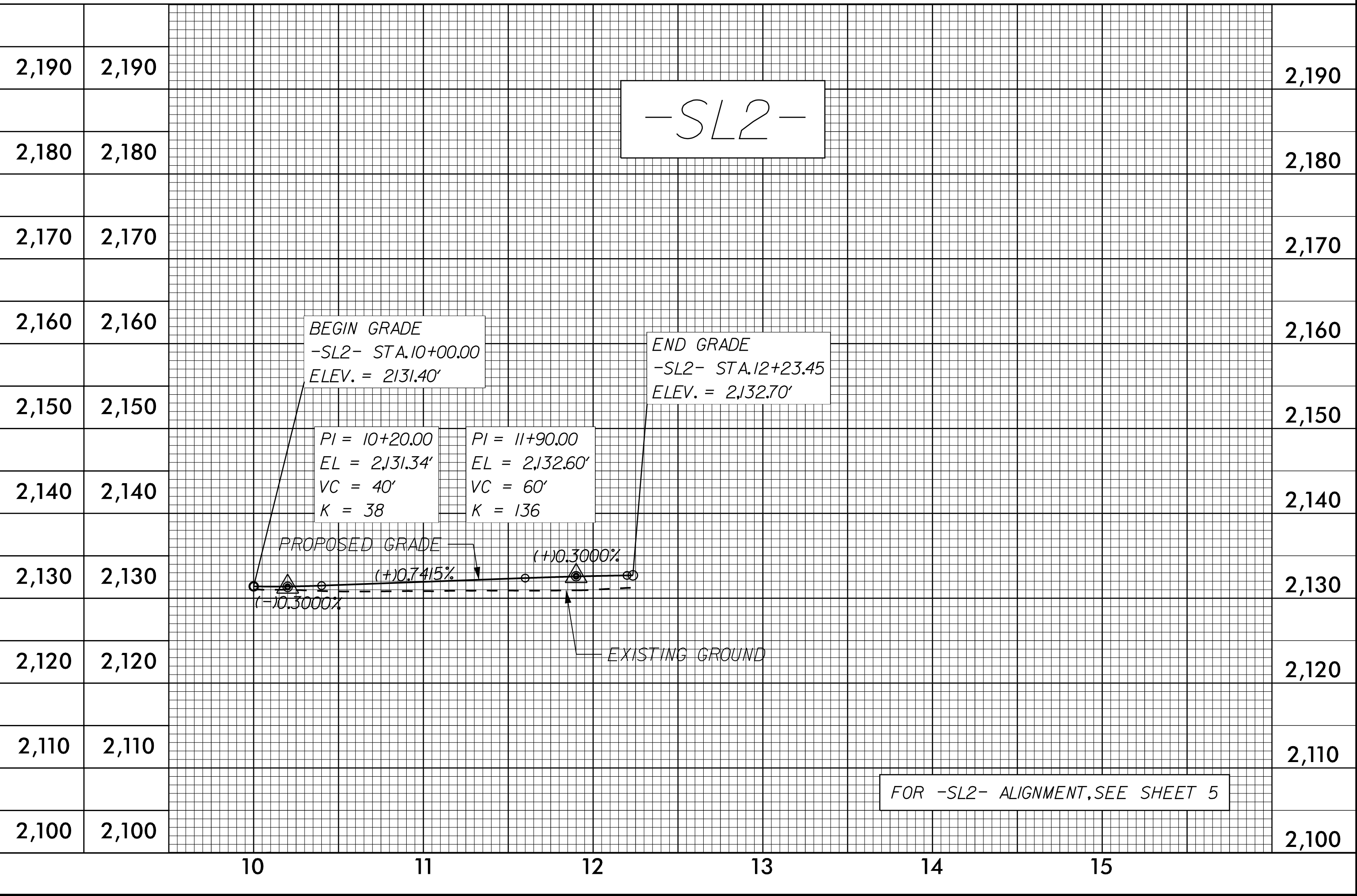
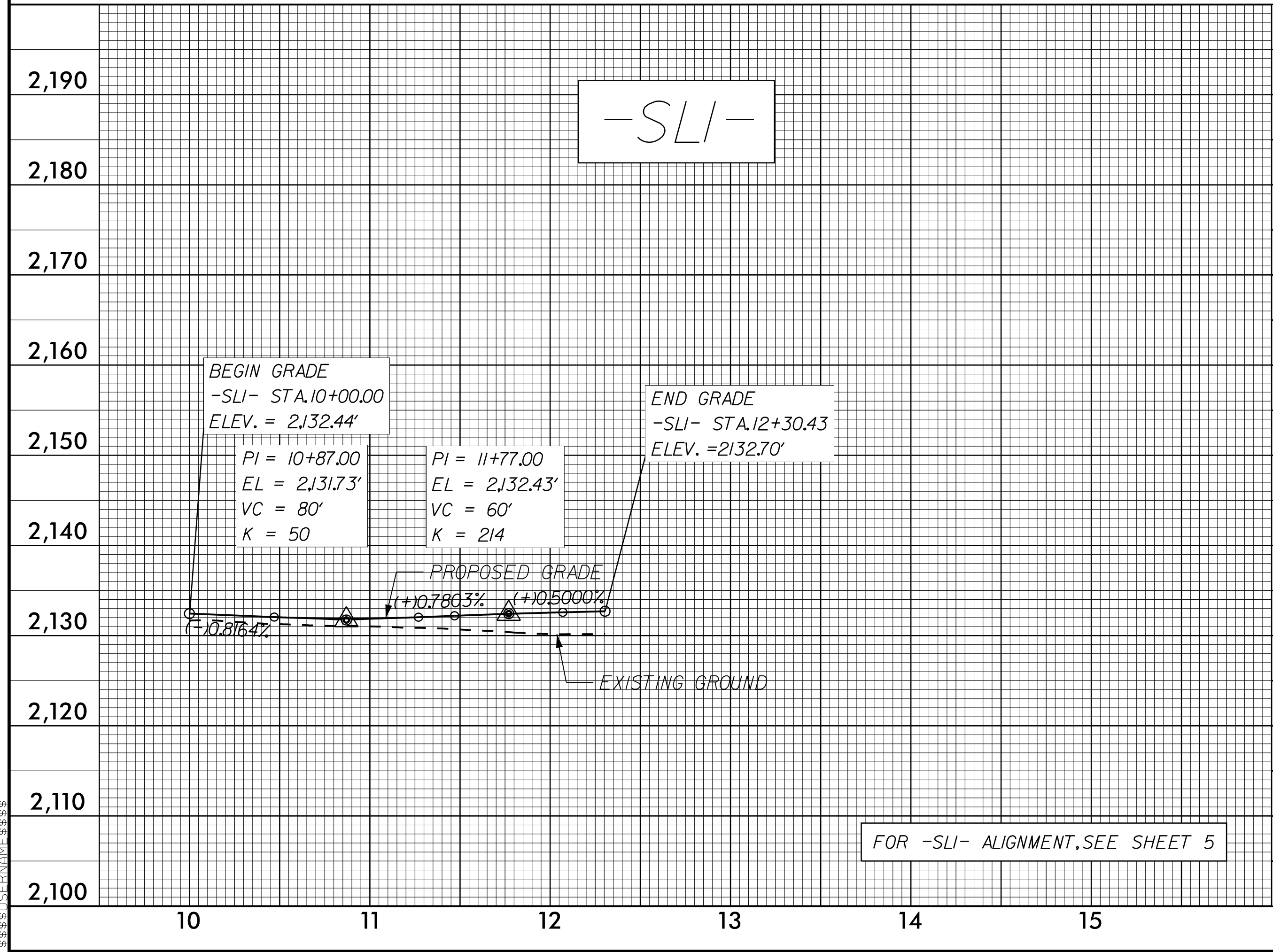
5/28/23

PROJECT REFERENCE NO. R-5799	SHEET NO. 11
ROADWAY DESIGN ENGINEER 	HYDRAULICS ENGINEER 
6/15/2023	6/15/2023

DOCUMENT NOT CONSIDERED FINAL UNLESS ALL SIGNATURES COMPLETED

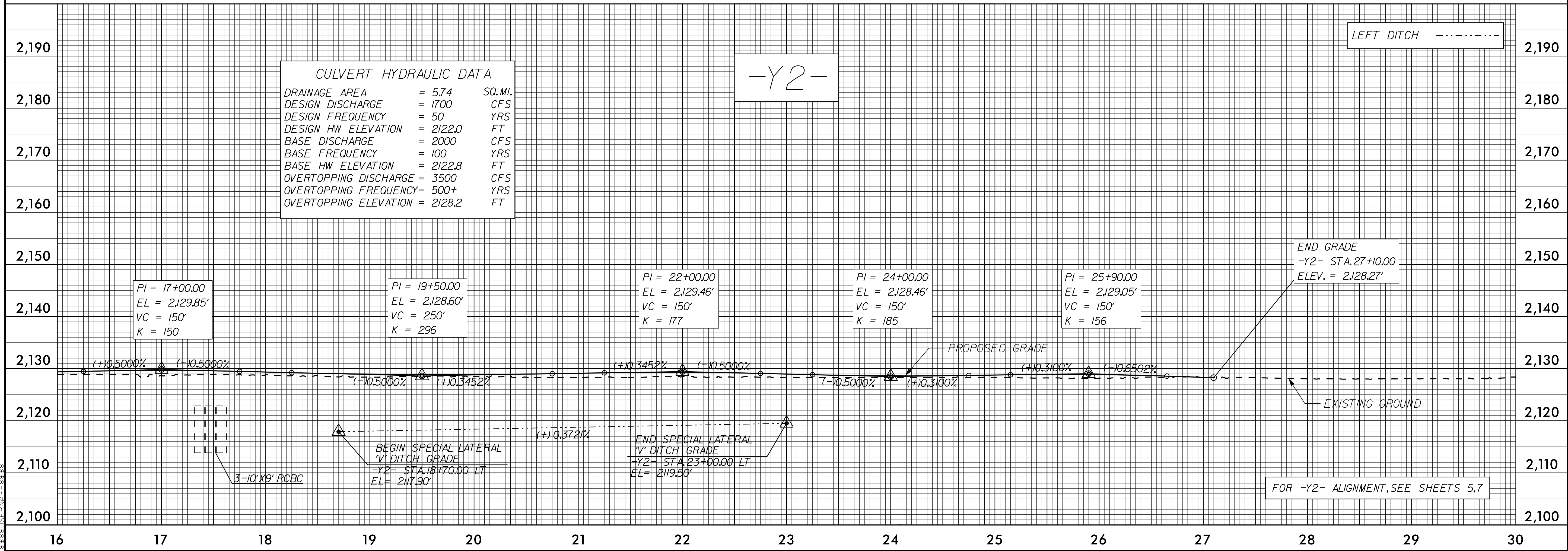
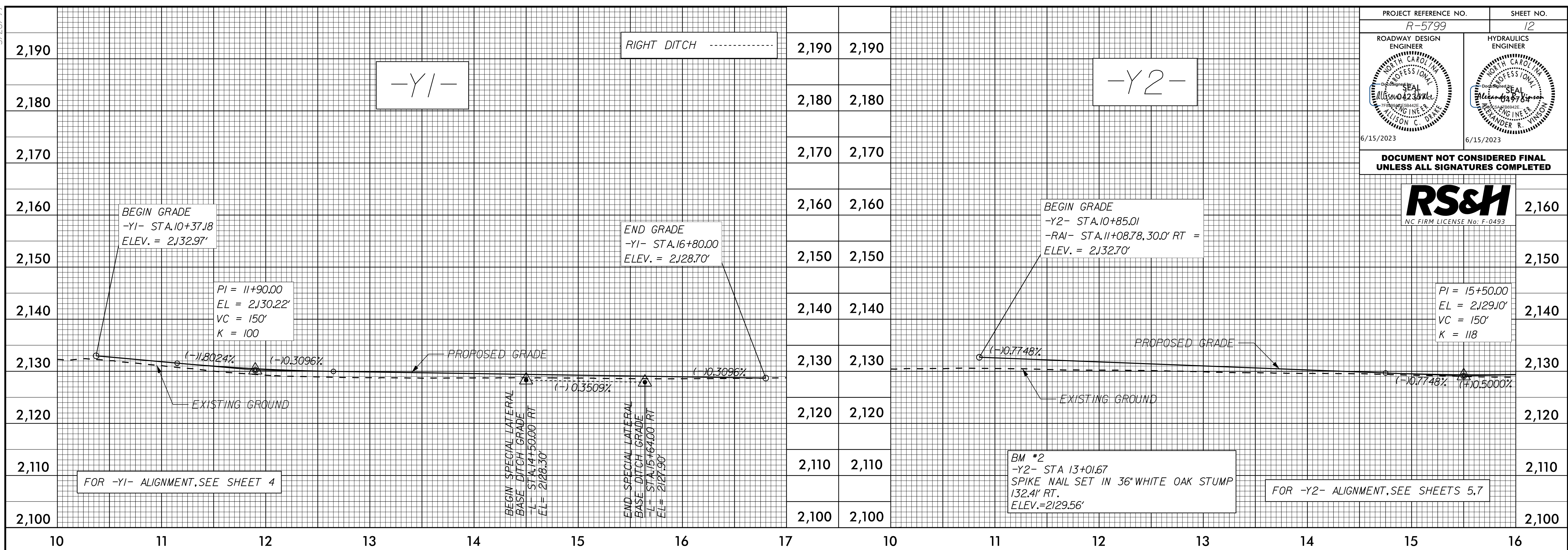


05-MAY-2023 11:09 P:\Roadwork\Projects\5799_Rdy_p\11.dgn



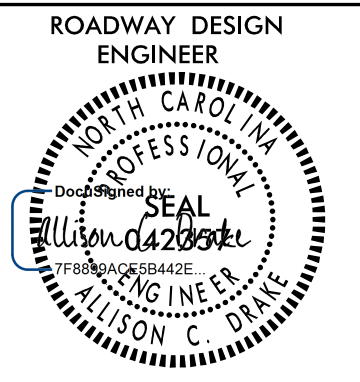
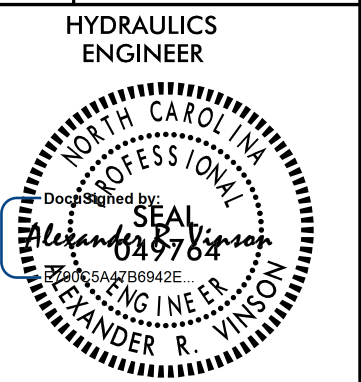
5/28/23

PROJECT REFERENCE NO. R-5799	SHEET NO. 12
ROADWAY DESIGN ENGINEER NORTH CAROLINA PROFESSIONAL SEAL MILLSON C. DRAY 6/15/2023	HYDRAULICS ENGINEER NORTH CAROLINA PROFESSIONAL SEAL ALEXANDER R. WINSTON 6/15/2023
DOCUMENT NOT CONSIDERED FINAL UNLESS ALL SIGNATURES COMPLETED	

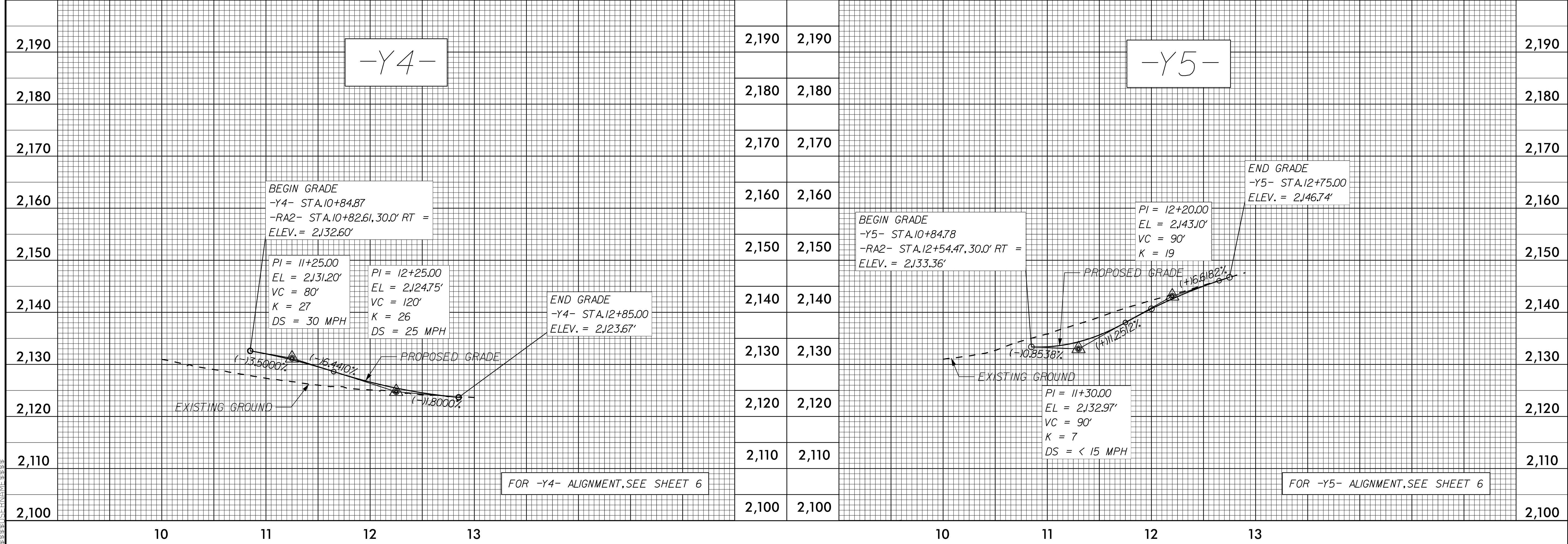
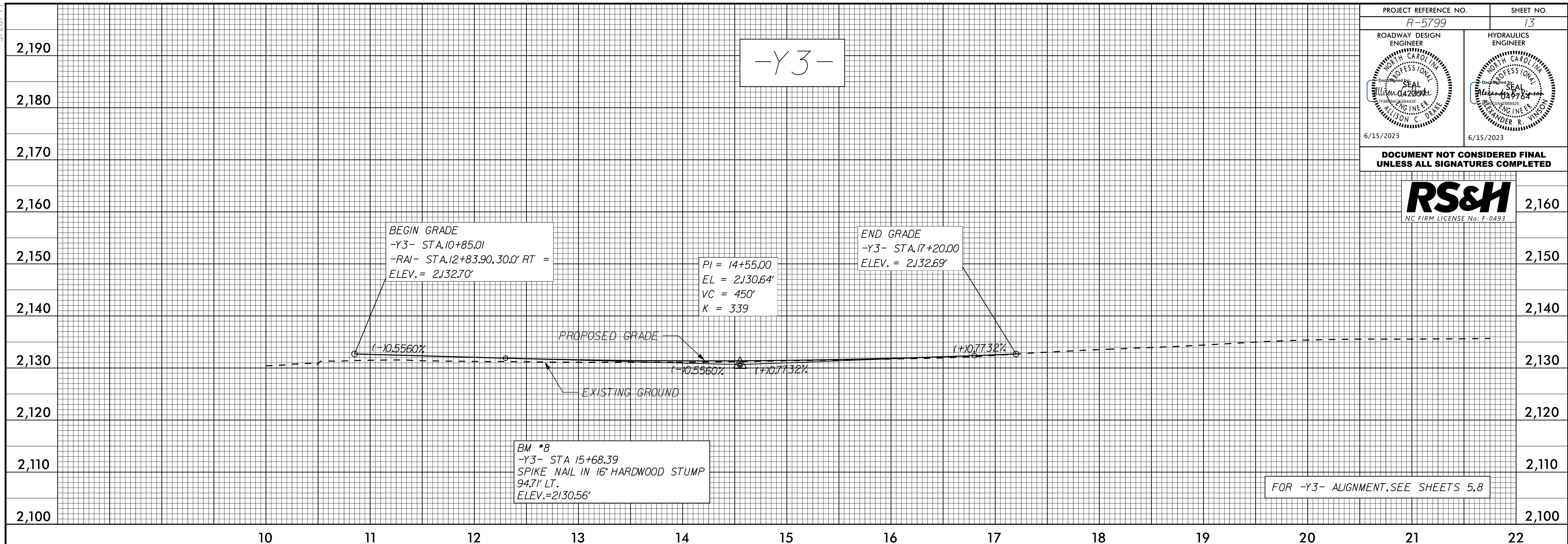


05 MAY 2023 17:09
R:\Roadway\Projects\5799_Rdu\pl12.dgn
\$\$\$\$\$ICERMAN\$\$\$\$\$

5/28/23

PROJECT REFERENCE NO. R-5799	SHEET NO. 13
ROADWAY DESIGN ENGINEER 	HYDRAULICS ENGINEER 
6/15/2023	6/15/2023

**DOCUMENT NOT CONSIDERED FINAL
UNLESS ALL SIGNATURES COMPLETED**



05-MAY-2023 17:09
R:\Road\5799-Roadway\5799_Roadway.dwg
RS&H