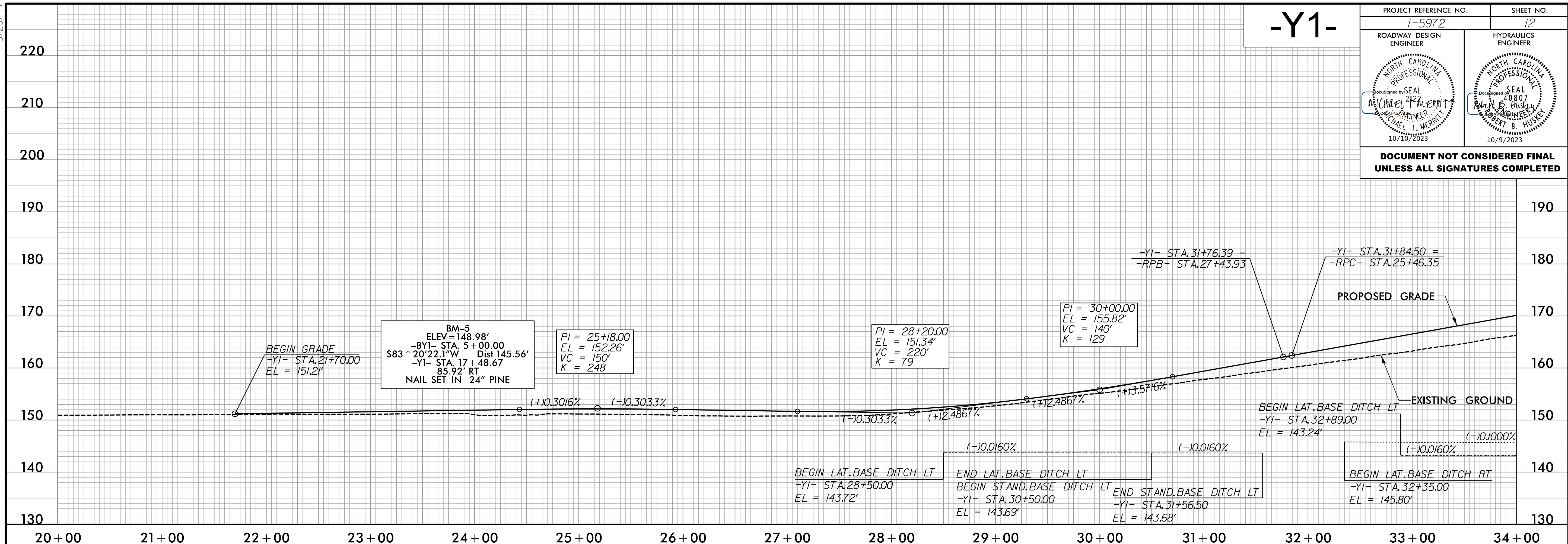


5/28/99

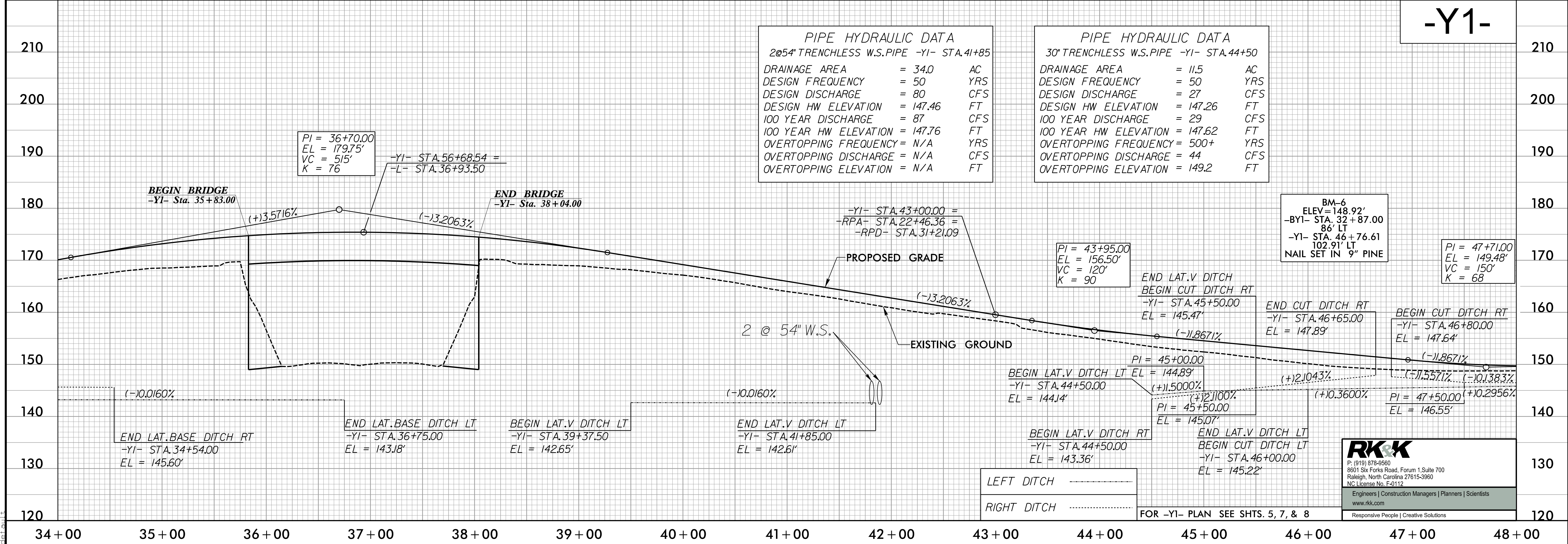
-Y1-

PROJECT REFERENCE NO. 1-5972	SHEET NO. 12
ROADWAY DESIGN ENGINEER	HYDRAULICS ENGINEER

DOCUMENT NOT CONSIDERED FINAL UNLESS ALL SIGNATURES COMPLETED



-Y1-



PIPE HYDRAULIC DATA
2@54" TRENCHLESS W.S. PIPE -Y1- STA. 41+85

DRAINAGE AREA	= 34.0	AC
DESIGN FREQUENCY	= 50	YRS
DESIGN DISCHARGE	= 80	CFS
DESIGN HW ELEVATION	= 147.46	FT
100 YEAR DISCHARGE	= 87	CFS
100 YEAR HW ELEVATION	= 147.76	FT
OVERTOPPING FREQUENCY	= N/A	YRS
OVERTOPPING DISCHARGE	= N/A	CFS
OVERTOPPING ELEVATION	= N/A	FT

PIPE HYDRAULIC DATA
30" TRENCHLESS W.S. PIPE -Y1- STA. 44+50

DRAINAGE AREA	= 11.5	AC
DESIGN FREQUENCY	= 50	YRS
DESIGN DISCHARGE	= 27	CFS
DESIGN HW ELEVATION	= 147.26	FT
100 YEAR DISCHARGE	= 29	CFS
100 YEAR HW ELEVATION	= 147.62	FT
OVERTOPPING FREQUENCY	= 500+	YRS
OVERTOPPING DISCHARGE	= 44	CFS
OVERTOPPING ELEVATION	= 149.2	FT

RK&K
P: (919) 878-8560
8801 Six Forks Road, Forum 1, Suite 700
Raleigh, North Carolina 27615-3960
NC License No. F-0112
Engineers | Construction Managers | Planners | Scientists
www.rkk.com
Responsive People | Creative Solutions

LEFT DITCH
RIGHT DITCH
FOR -Y1- PLAN SEE SHTS. 5, 7, & 8

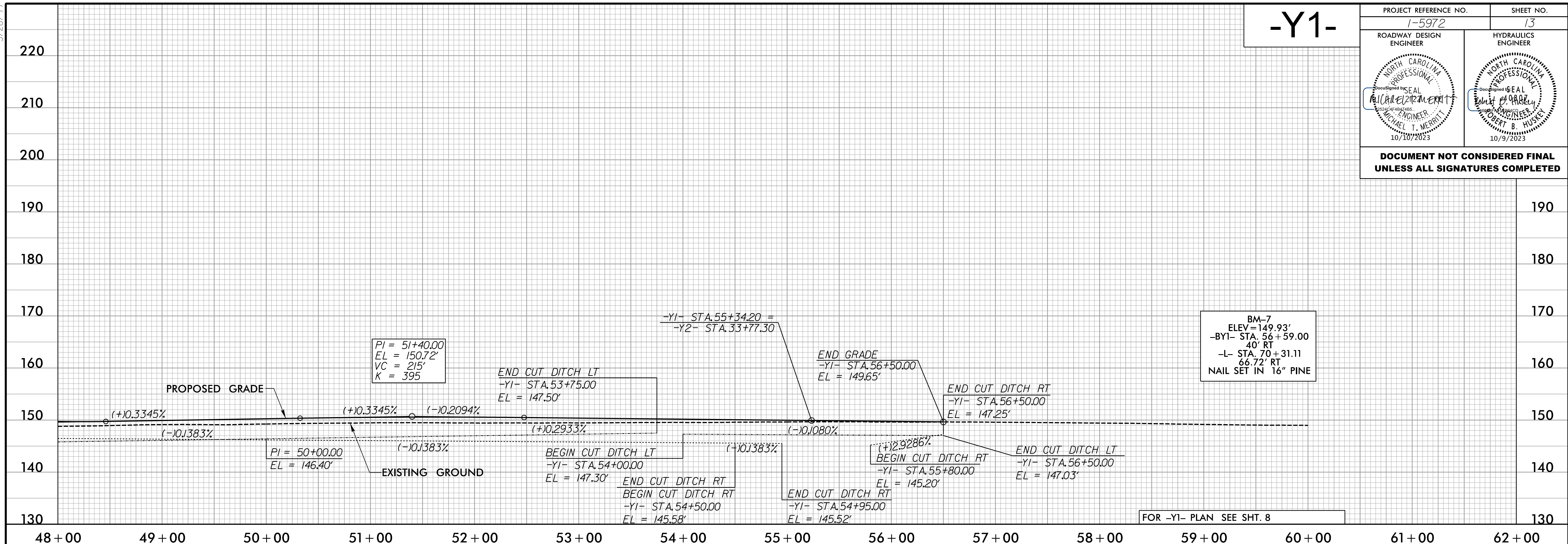
10/5/2003
R:\Projects\15972 - Rdy.p\112.dgn

5/28/24 10/5/2023 R:\Projects\15972-Rd\p113.dgn

-Y1-

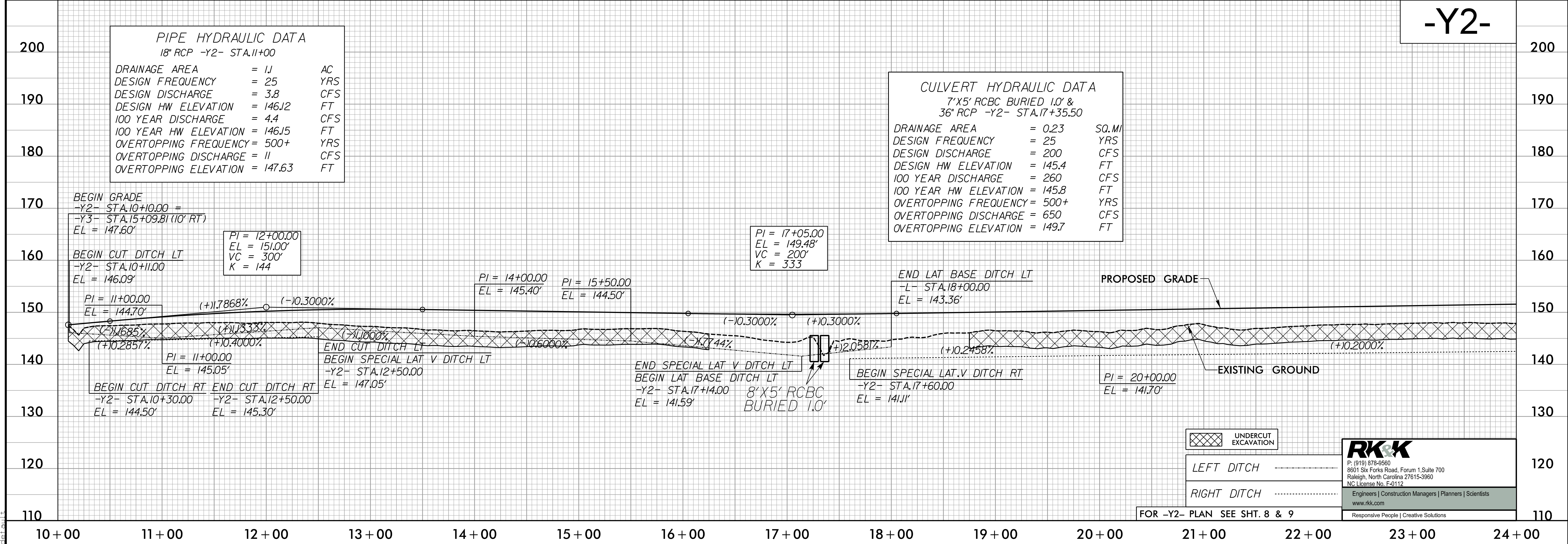
PROJECT REFERENCE NO. 1-5972	SHEET NO. 13
ROADWAY DESIGN ENGINEER <i>Michael T. Merritt</i>	HYDRAULICS ENGINEER <i>Robert B. Husky</i>

DOCUMENT NOT CONSIDERED FINAL UNLESS ALL SIGNATURES COMPLETED



FOR -Y1- PLAN SEE SHT. 8

-Y2-



FOR -Y2- PLAN SEE SHT. 8 & 9

RK&K
 P: (919) 878-8560
 8801 Six Forks Road, Forum 1, Suite 700
 Raleigh, North Carolina 27615-3960
 NC License No. F-0112
 Engineers | Construction Managers | Planners | Scientists
 www.rkk.com
 Responsive People | Creative Solutions

5/28/99

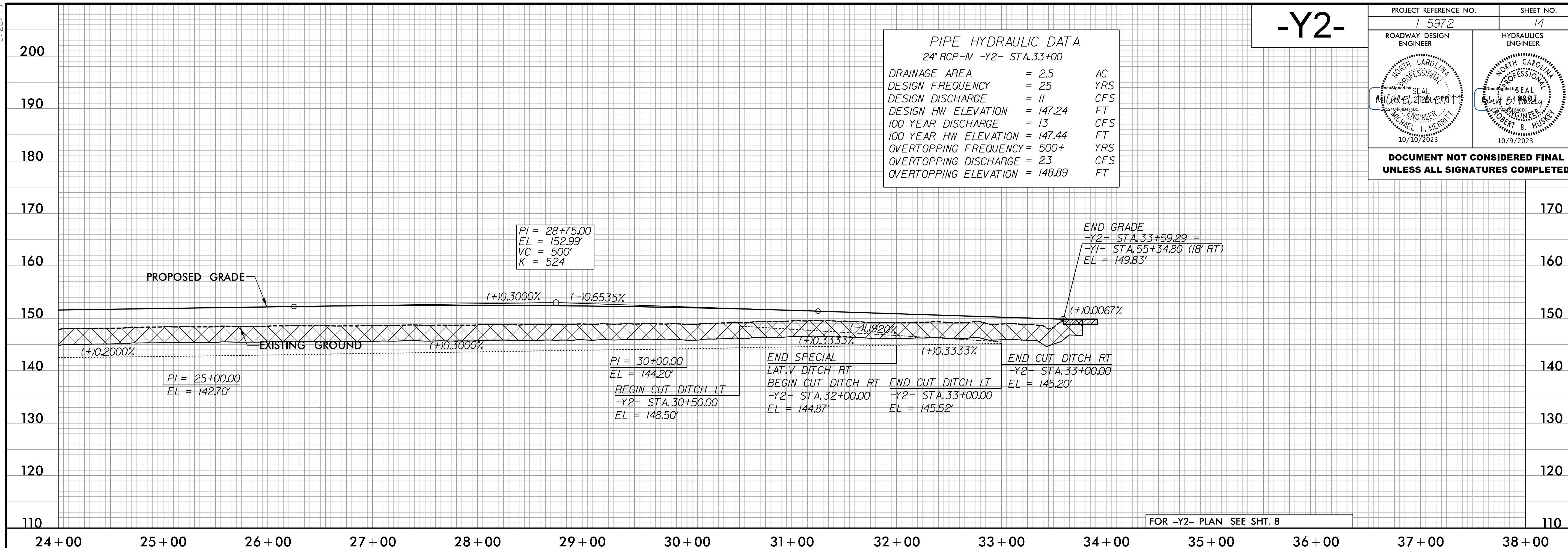
-Y2-

PROJECT REFERENCE NO. 1-5972	SHEET NO. 14
ROADWAY DESIGN ENGINEER <i>Michael T. Merritt</i>	HYDRAULICS ENGINEER <i>Robert B. Husky</i>

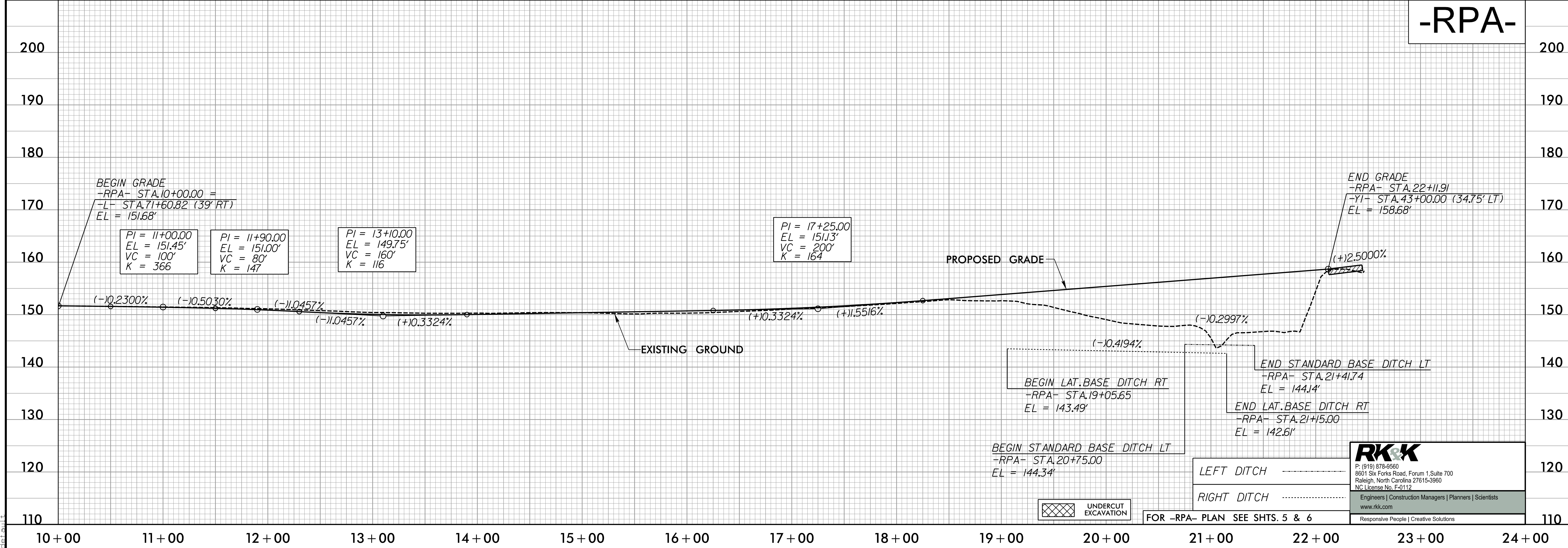
**DOCUMENT NOT CONSIDERED FINAL
UNLESS ALL SIGNATURES COMPLETED**

PIPE HYDRAULIC DATA
24" RCP-N -Y2- STA.33+00

DRAINAGE AREA	= 2.5	AC
DESIGN FREQUENCY	= 25	YRS
DESIGN DISCHARGE	= 11	CFS
DESIGN HW ELEVATION	= 147.24	FT
100 YEAR DISCHARGE	= 13	CFS
100 YEAR HW ELEVATION	= 147.44	FT
OVERTOPPING FREQUENCY	= 500+	YRS
OVERTOPPING DISCHARGE	= 23	CFS
OVERTOPPING ELEVATION	= 148.89	FT



-RPA-



RK&K
P: (919) 878-9560
8801 Six Forks Road, Forum 1, Suite 700
Raleigh, North Carolina 27615-3960
NC License No. F-0112
www.rkk.com

Engineers | Construction Managers | Planners | Scientists
Responsive People | Creative Solutions

10/5/2023
R:\Projects\15972-Rd\p114.dgn

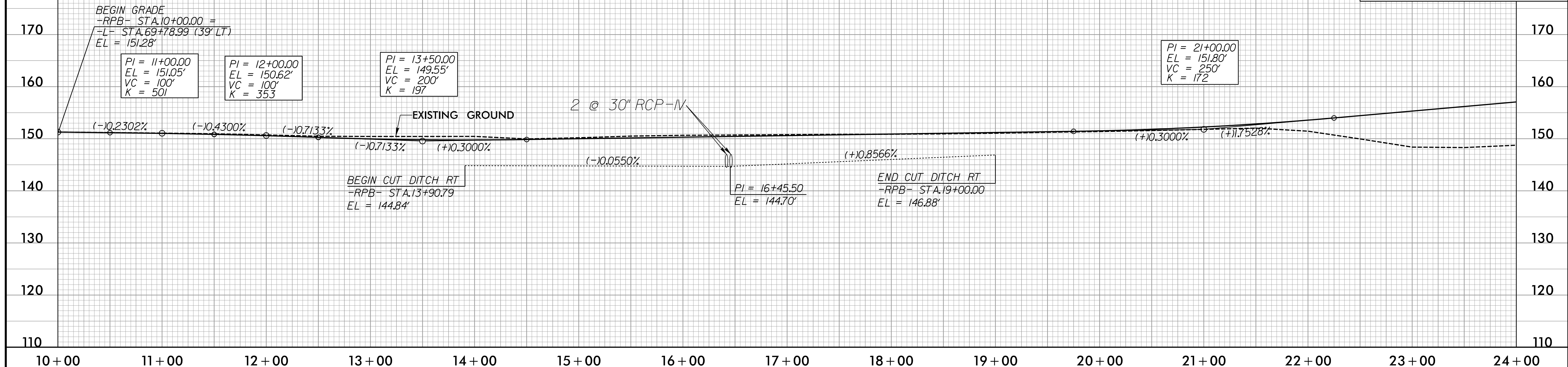
5/28/23

PIPE HYDRAULIC DATA
2 @ 30" RCP-IV -RPB- STA.16+44

DRAINAGE AREA	= 13.7	AC
DESIGN FREQUENCY	= 50	YRS
DESIGN DISCHARGE	= 46	CFS
DESIGN HW ELEVATION	= 148.24	FT
100 YEAR DISCHARGE	= 49	CFS
100 YEAR HW ELEVATION	= 148.65	FT
OVERTOPPING FREQUENCY	= 100+/-	YRS
OVERTOPPING DISCHARGE	= 51	CFS
OVERTOPPING ELEVATION	= 148.6	FT

-RPB-

PROJECT REFERENCE NO.	1-5972	SHEET NO.	15
ROADWAY DESIGN ENGINEER		HYDRAULICS ENGINEER	
DOCUMENT NOT CONSIDERED FINAL UNLESS ALL SIGNATURES COMPLETED			



PIPE HYDRAULIC DATA
30" RCP-III -RPB- STA.25+65

DRAINAGE AREA	= 4.3	AC
DESIGN FREQUENCY	= 50	YRS
DESIGN DISCHARGE	= 14	CFS
DESIGN HW ELEVATION	= 147.90	FT
100 YEAR DISCHARGE	= 15	CFS
100 YEAR HW ELEVATION	= 148.28	FT
OVERTOPPING FREQUENCY	= NA	YRS
OVERTOPPING DISCHARGE	= NA	CFS
OVERTOPPING ELEVATION	= NA	FT

-RPB-



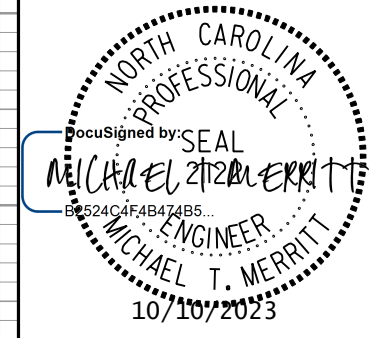
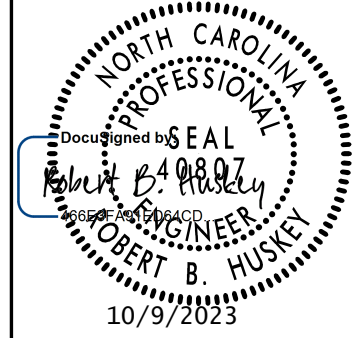
RK&K
P: (919) 878-9560
8801 Six Forks Road, Forum 1, Suite 700
Raleigh, North Carolina 27615-3960
NC License No. F-0112
Engineers | Construction Managers | Planners | Scientists
www.rkk.com
Responsive People | Creative Solutions

RIGHT DITCH
FOR -RPB- PLAN SEE SHT. 5

10/5/2023 10:46:25 AM P:\Projects\15972-Rd\p115.dgn

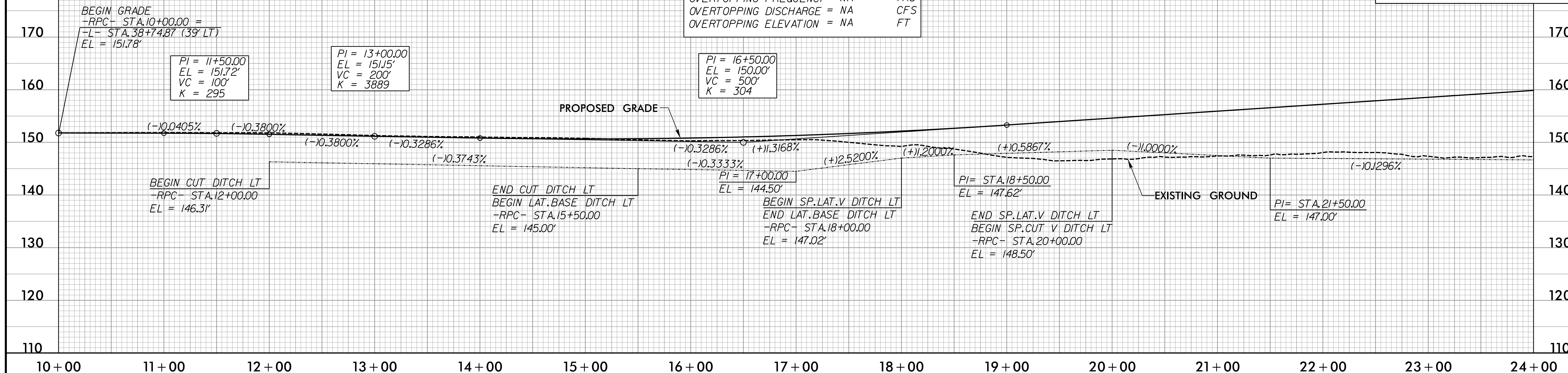
5/28/99

-RPC-

PROJECT REFERENCE NO. 1-5972	SHEET NO. 16
ROADWAY DESIGN ENGINEER 	HYDRAULICS ENGINEER 
DOCUMENT NOT CONSIDERED FINAL UNLESS ALL SIGNATURES COMPLETED	

PIPE HYDRAULIC DATA
42" RCP-IV -RPC- STA.17+06

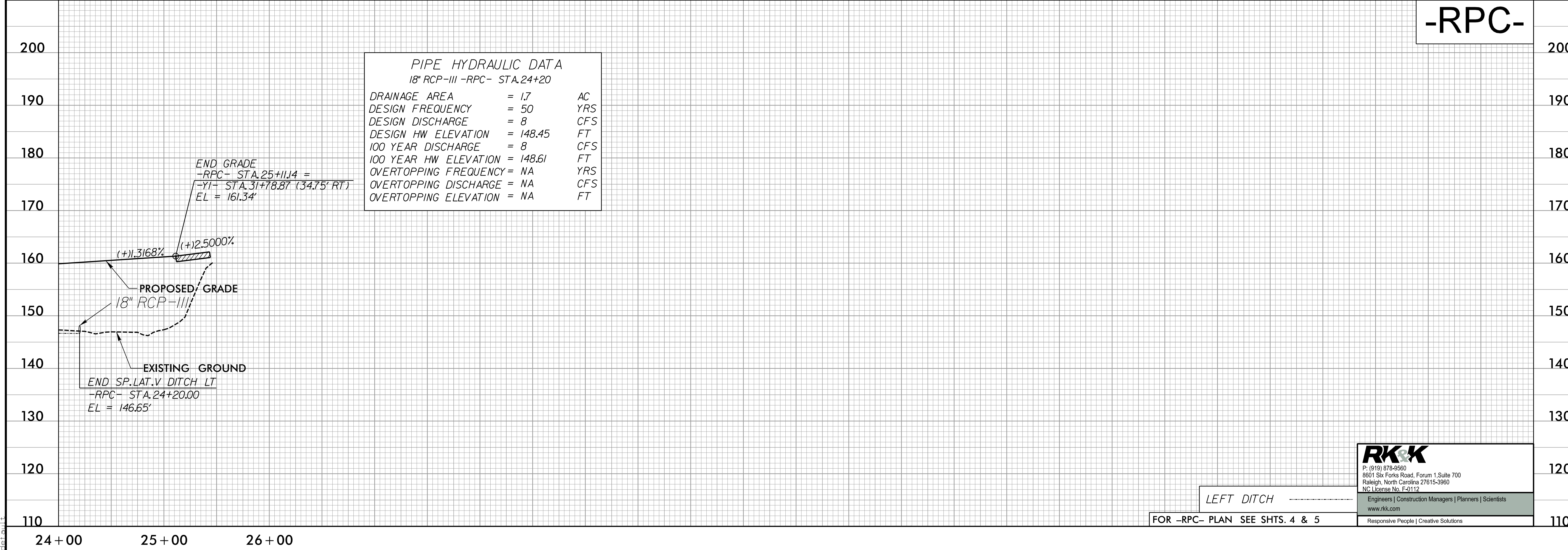
DRAINAGE AREA	= 211	AC
DESIGN FREQUENCY	= 50	YRS
DESIGN DISCHARGE	= 79	CFS
DESIGN HW ELEVATION	= 149.51	FT
100 YEAR DISCHARGE	= 85	CFS
100 YEAR HW ELEVATION	= 149.92	FT
OVERTOPPING FREQUENCY	= NA	YRS
OVERTOPPING DISCHARGE	= NA	CFS
OVERTOPPING ELEVATION	= NA	FT



-RPC-

PIPE HYDRAULIC DATA
18" RCP-III -RPC- STA.24+20

DRAINAGE AREA	= 1.7	AC
DESIGN FREQUENCY	= 50	YRS
DESIGN DISCHARGE	= 8	CFS
DESIGN HW ELEVATION	= 148.45	FT
100 YEAR DISCHARGE	= 8	CFS
100 YEAR HW ELEVATION	= 148.61	FT
OVERTOPPING FREQUENCY	= NA	YRS
OVERTOPPING DISCHARGE	= NA	CFS
OVERTOPPING ELEVATION	= NA	FT



RK&K
P: (919) 878-9560
8801 Six Forks Road, Forum 1, Suite 700
Raleigh, North Carolina 27615-3960
NC License No. F-0112
www.rkk.com
Engineers | Construction Managers | Planners | Scientists
Responsive People | Creative Solutions

LEFT DITCH
FOR -RPC- PLAN SEE SHTS. 4 & 5

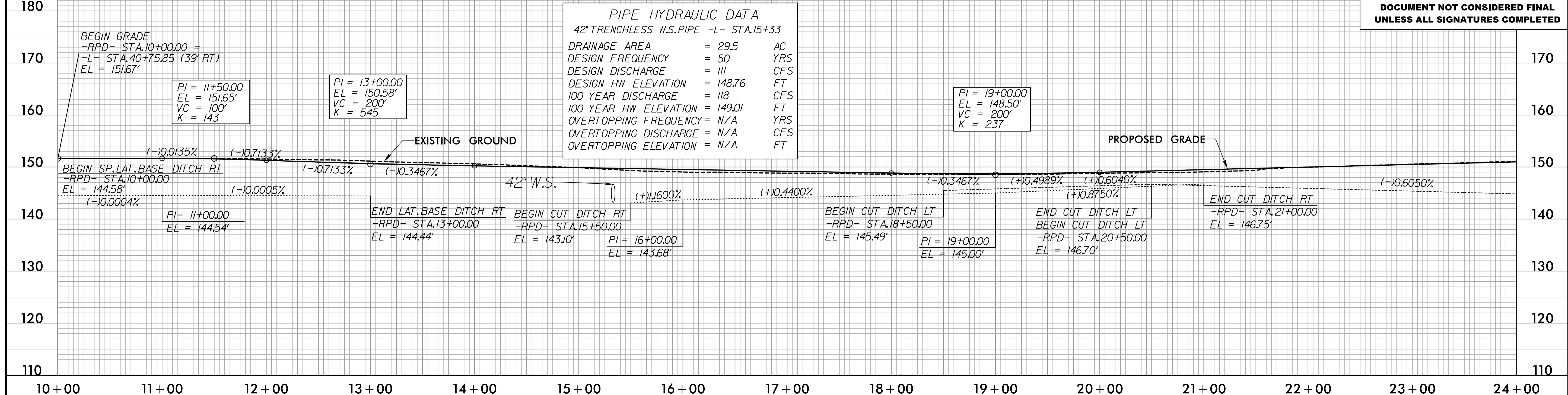
10/5/2023
10:46:21 AM
C:\Users\p116\OneDrive\Projects\15972-Rd\p116.dgn

5/28/99

-RPD-

PROJECT REFERENCE NO. 1-5972	SHEET NO. 17
ROADWAY DESIGN ENGINEER MICHAEL T. MERRITT 10/10/2023	HYDRAULICS ENGINEER MICHAEL T. MERRITT 10/9/2023

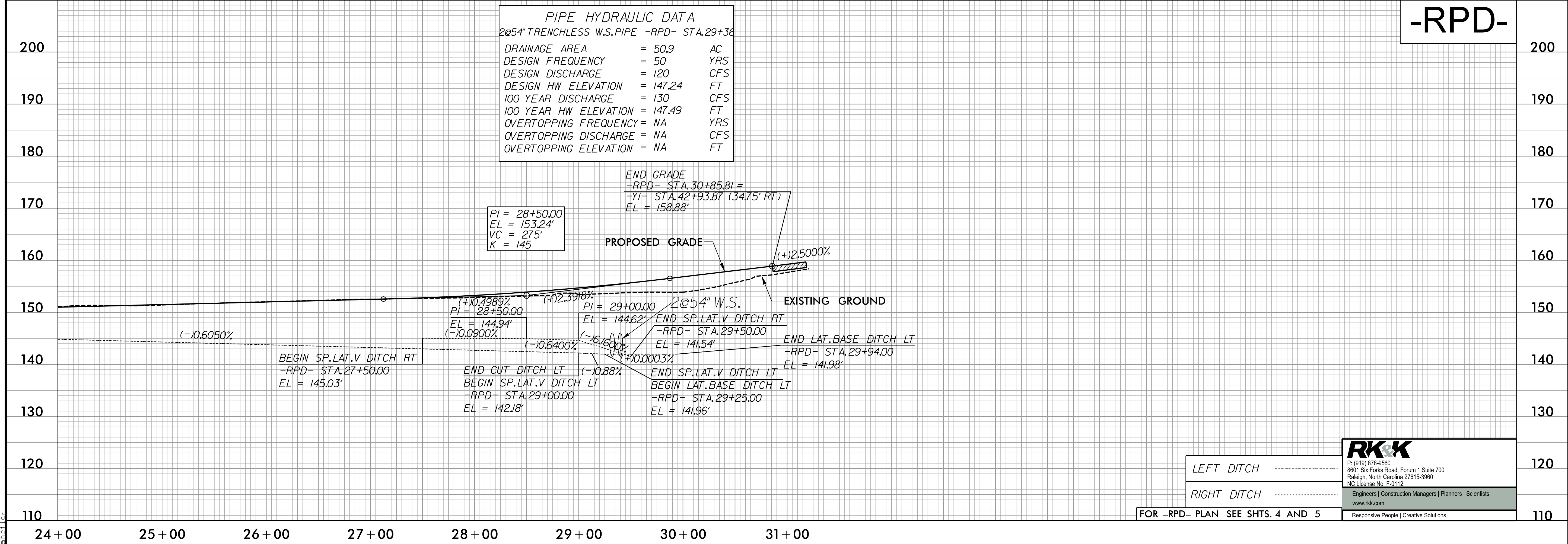
DOCUMENT NOT CONSIDERED FINAL
UNLESS ALL SIGNATURES COMPLETED



PIPE HYDRAULIC DATA
2@54" TRENCHLESS W.S. PIPE -RPD- STA. 29+36

DRAINAGE AREA	= 50.9	AC
DESIGN FREQUENCY	= 50	YRS
DESIGN DISCHARGE	= 120	CFS
DESIGN HW ELEVATION	= 147.24	FT
100 YEAR DISCHARGE	= 130	CFS
100 YEAR HW ELEVATION	= 147.49	FT
OVERTOPPING FREQUENCY	= NA	YRS
OVERTOPPING DISCHARGE	= NA	CFS
OVERTOPPING ELEVATION	= NA	FT

-RPD-



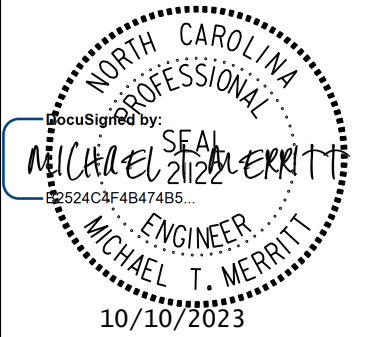
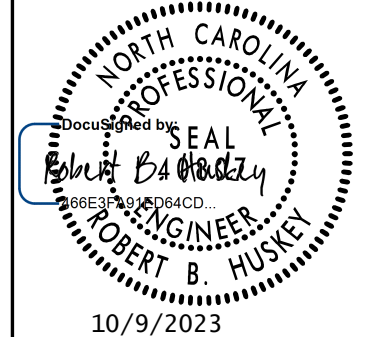
RK&K
P: (919) 878-8560
8801 Six Forks Road, Forum 1, Suite 700
Raleigh, North Carolina 27615-3960
NC License No. F-0112
www.rkk.com
Responsive People | Creative Solutions

FOR -RPD- PLAN SEE SHTS. 4 AND 5

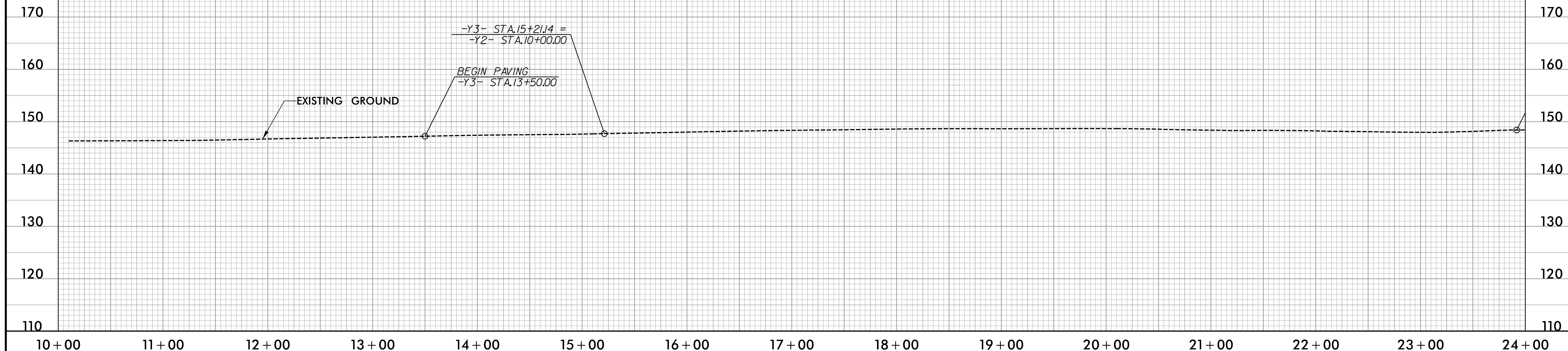
10/5/2023
R:\Projects\15972 - Rdy - p117.dgn
shel

5/28/99

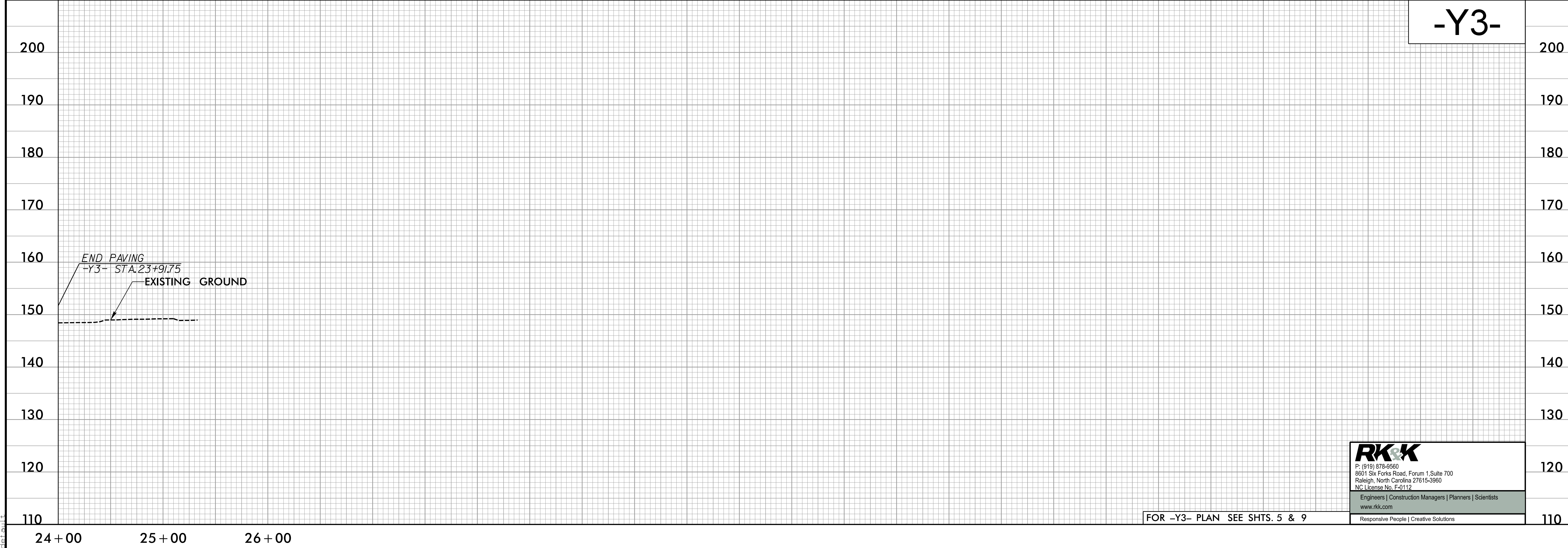
-Y3-

PROJECT REFERENCE NO. 1-5972	SHEET NO. 18
ROADWAY DESIGN ENGINEER 	HYDRAULICS ENGINEER 

**DOCUMENT NOT CONSIDERED FINAL
UNLESS ALL SIGNATURES COMPLETED**



-Y3-



RK&K
 P: (919) 878-0560
 8801 Six Forks Road, Forum 1, Suite 700
 Raleigh, North Carolina 27615-3960
 NC License No. F-0112
 Engineers | Construction Managers | Planners | Scientists
 www.rkk.com
 Responsive People | Creative Solutions

FOR -Y3- PLAN SEE SHTS. 5 & 9

10/5/2023
P:\Projects\15972-Rd\p118.dgn