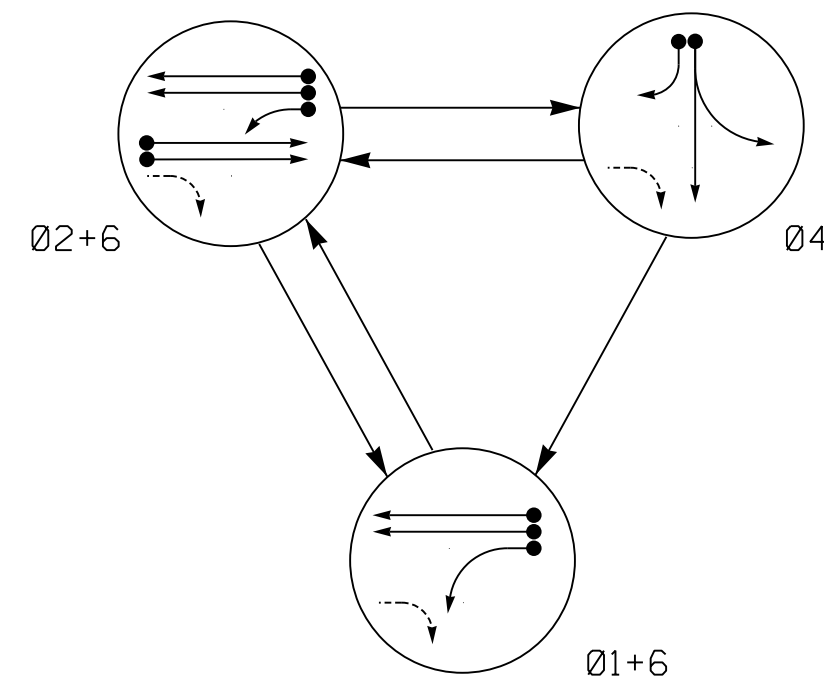


PHASING DIAGRAM



SIGNAL FACE	PHASE			
	Ø 1 + 6	Ø 2 + 6	Ø 4	FLASH
11	—	—	R	—
21,22	R	G	R	Y
41	R	R	G	R
42	R	R	G	R
61,62	G	G	R	Y

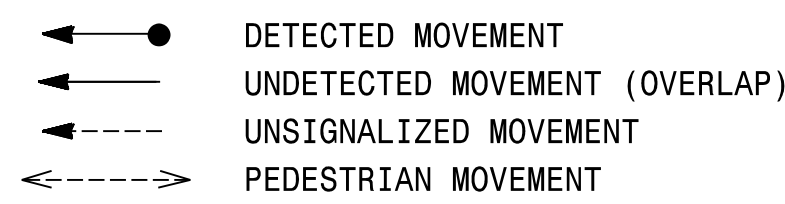
MAXTIME DETECTOR INSTALLATION CHART												
DETECTOR					PROGRAMMING							
LOOP	SIZE (FT)	DISTANCE FROM STOPBAR (FT)	TURNS	NEW LOOP	CALL PHASE	DELAY TIME	EXTEND TIME	EXTEND	ADDED INITIAL	CALL	DELAY DURING GREEN	NEW CARD
1A	6X40	0	2-4-2	X	1	15.0	-	X	-	X	-	X
					6	-	-	X	-	X	-	X
2A	6X6	70	3	X	2	-	-	X	-	X	-	X
2B	6X6	70	3	X	2	-	-	X	-	X	-	X
4A	6X40	0	2-4-2	X	4	-	-	X	-	X	-	X
4B	6X40	0	2-4-2	X	4	15.0	-	X	-	X	-	X
4C	6X15	0	4	X	4	15.0	-	X	-	X	-	X
6A	6X6	70	4	X	6	-	-	X	-	X	-	X
6B	6X6	70	4	X	6	-	-	X	-	X	-	X

3 Phase Actuated (D04-07\_Smithfield Signal System)

NOTES

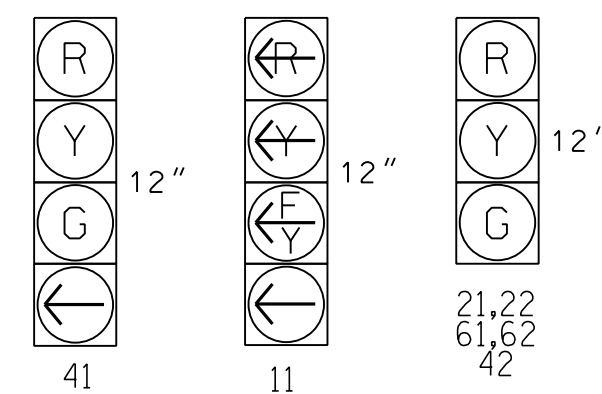
- Refer to "Roadway Standard Drawings NCDOT" dated January 2018 and "Standard Specifications for Roads and Structures" dated January 2018.
- Do not program signal for late night flashing operation unless otherwise directed by the Engineer.
- Phase 1 may be lagged.
- Set all detector units to presence mode.
- See Pavement Marking Plans for stop bar details.
- Locate new cabinet so as not to obstruct sight distance of vehicles turning right on red.
- Maximum times shown in timing chart are for free-run operation only. Coordinated signal system timing values shall supersede these values.
- Closed loop system data: Controller Asset #1454.

PHASING DIAGRAM DETECTION LEGEND



SIGNAL FACE I.D.

All Heads L.E.D.

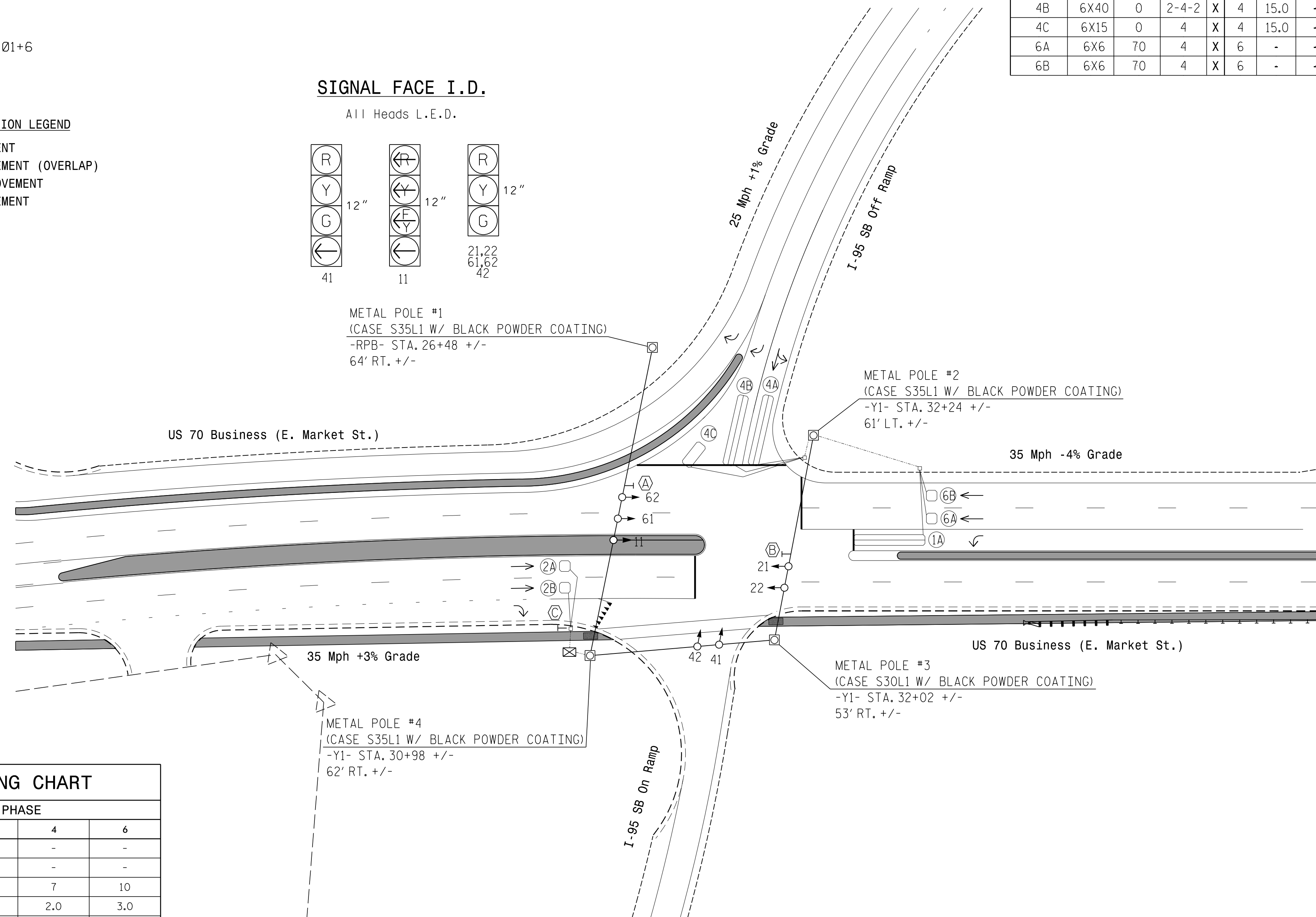


METAL POLE #1 (CASE S35L1 W/ BLACK POWDER COATING) -RPB- STA. 26+48 +/- 64' RT. +/-

METAL POLE #2 (CASE S35L1 W/ BLACK POWDER COATING) -Y1- STA. 32+24 +/- 61' LT. +/-

METAL POLE #3 (CASE S30L1 W/ BLACK POWDER COATING) -Y1- STA. 32+02 +/- 53' RT. +/-

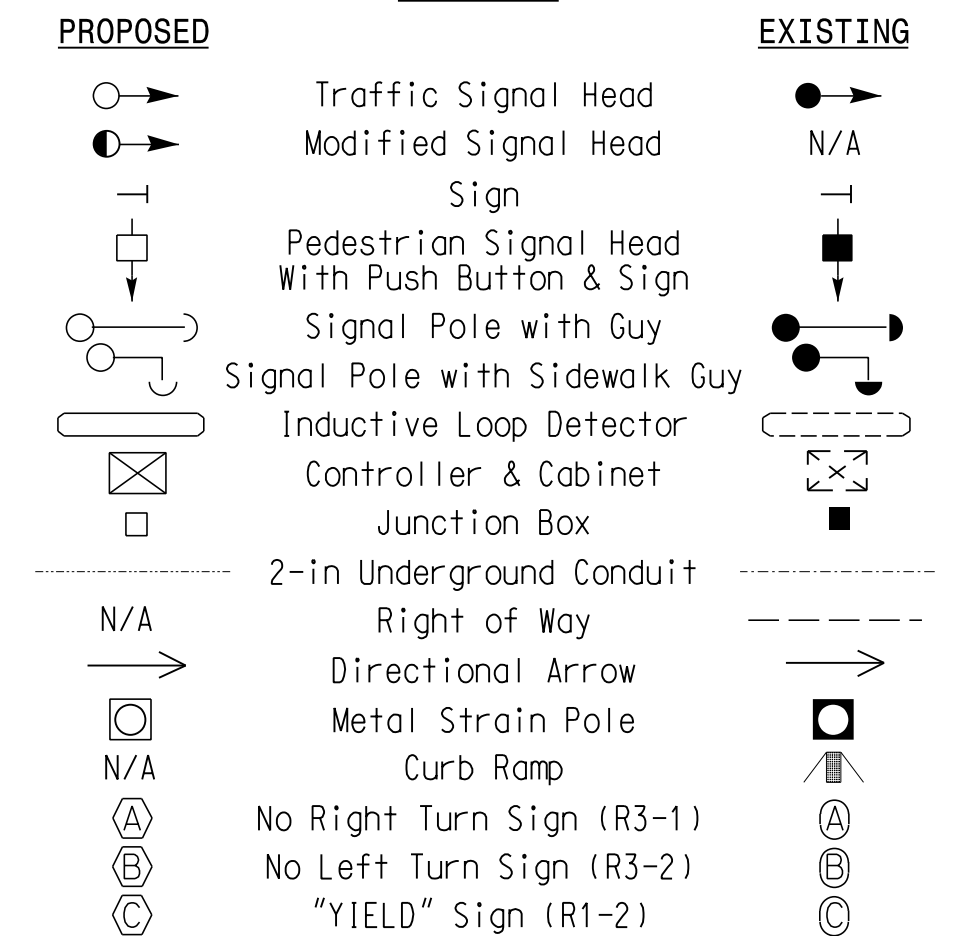
METAL POLE #4 (CASE S35L1 W/ BLACK POWDER COATING) -Y1- STA. 30+98 +/- 62' RT. +/-



FEATURE	PHASE			
	1	2	4	6
Walk *	-	-	-	-
Ped Clear *	-	-	-	-
Min Green	7	10	7	10
Passage *	2.0	3.0	2.0	3.0
Max 1 *	20	60	30	60
Yellow Change	3.0	4.1	3.1	4.1
Red Clear	2.9	1.9	2.5	1.9
Added Initial *	-	-	-	-
Maximum Initial *	-	-	-	-
Time Before Reduction *	-	-	-	-
Time To Reduce *	-	-	-	-
Minimum Gap	-	-	-	-
Non Lock Detector	X	-	X	-
Vehicle Recall	-	MIN RECALL	-	MIN RECALL
Dual Entry	-	-	-	-

\* These values may be field adjusted. Do not adjust Min Green and Passage times for phases 2 and 6 lower than what is shown. Min Green for all other phases should not be lower than 4 seconds.

LEGEND



New Installation

**RK&K**  
 P: (919) 878-9560  
 8001 Six Forks Road Suite 700 | Raleigh, North Carolina 27615-2965  
 NC License No. F-0112  
 Engineers | Construction Managers | Planners | Scientists  
 www.rk.com  
 Responsive People | Creative Solutions

Prepared for the Offices of:  
  
 750 N. Greenfield Pkwy, Garner, NC 27529

**US 70 Business (E. Market St.) at I-95 SB Ramps**  
 Division 04 Johnston County Smithfield  
 PLAN DATE: September 2023 REVIEWED BY: DT Sears  
 PREPARED BY: WP Erickson-Jones REVIEWED BY:  
 REVISIONS: INIT. DATE

DOCUMENT NOT CONSIDERED FINAL UNLESS ALL SIGNATURES COMPLETED

SEAL  
 NORTH CAROLINA PROFESSIONAL ENGINEER  
 SEAL 044558  
 DAVID T. SEARS  
 9/19/2023  
 SIGNATURE DATE  
 SIG. INVENTORY NO. 04-1454